



ARDEX WPM 5000HD

Shelterseal 5000HD

Self Adhesive SBS Membrane

DISCLAIMER The technical details, recommendations and other information contained in this data sheet are given in good faith and represent the best of our knowledge and experience at the time of printing. It is your responsibility to ensure that our products are used and handled correctly and in accordance with any applicable New Zealand Standard, our instructions and recommendations and only for the uses they are intended. We also reserve the right to update information without prior notice to you to reflect our ongoing research and development program. Country specific recommendations, depending on local standards, codes of practice, building regulations or industry guidelines, may effect specific installation recommendations. The supply of our products and services is also subject to certain terms, warranties and exclusions, which may have already been disclosed to you in prior dealings or are otherwise available to you on request. You should make yourself familiar with them.

ARDEX WPM 5000HD

Shelterseal HD

Self Adhesive SBS Membrane



PRODUCT DESCRIPTION

Ardex WPM 5000HD (Shelterseal HD) is an industrial strength “peel and stick” bituminous/asphalt membrane. Ardex WPM 5000HD (Shelterseal HD) is reinforced with a layer of polypropylene mesh giving the product exceptionally high mechanical characteristics.

Ardex WPM 5000HD (Shelterseal HD) is made from two structural components:

- Bitumen/asphalt compound modified with SBS and high tack resins
- A protective polypropylene mesh hot laminated to the bituminous/asphalt compound. This gives the membrane its mechanical and physical characteristics, such as heat and shape stability, chemical and puncture resistance

FEATURES/BENEFITS

Cold Application Installed without the use of open flames. Ideal for installation in restricted spaces.

High durability Polypropylene mesh reinforcement layer provides tough, puncture resistant finish.

Constant thickness The membrane is manufactured using the highest quality materials, standards and sheet manufacturing techniques.

Slip free surface Membrane provides an ideal, safe working surface.

ACCEPTABLE SUBSTRATES

- Concrete, renders and screeds
- Fibre cement sheets
- Structural or marine plywood

For use over other substrates including existing membranes contact Ardex

TYPICAL APPLICATIONS

- Parking decks & car parks
- Vehicular traffic structures
- Expansion joints
- Underneath clay tiles or asphalt shingles
- Any applications where the waterproofing must have high mechanical characteristics

BASIC APPLICATION INSTRUCTIONS

Surface Preparation

Surfaces to which the Ardex WPM 5000HD (Shelterseal HD) systems are installed must be properly prepared prior to installation. All surfaces must be clean, dry, smooth, free of sharp edges, loose or foreign materials, oil, grease, and other materials that may damage the membrane. If concrete has moisture on surface use gas torch to dry and warm before priming.

Priming

Prior to the application of the membrane all prepared surfaces except polystyrene block should be primed with Ardex WPM 240 (Shelter Primer) at a rate of 5-6m² per litre and allowed to dry.

Membrane Installation

Starting at the lowest point, the membrane must be installed in accordance with the Technical Literature. Sheet edges must be overlapped a minimum of 60mm as marked on the sheets. End laps must be a minimum of 100mm, with upper sheets lapped over lower sheets. Internal and external corners of single layer systems must be reinforced with an extra layer of membrane 300mm wide. Where two layer systems are specified lap joints must be staggered. Protection material must be installed before backfilling. Backfilling must commence immediately after the membrane is installed to ensure the membrane is not left exposed to sunlight or UV radiation.

Installation of the membranes must be completed by tradespersons who have experience in the application of self-adhesive membranes.

Applying asphalt directly over Ardex WPM 5000HD (Shelterseal HD)

The asphalt should be applied as soon as possible after the Ardex WPM 5000HD (Shelterseal HD) membrane has been installed. Ardex recommend applying a minimum 50mm compacted overlay for carpark areas. The topping should be applied at a temperature of between 120-150°C.

PLASTERING OVER SHELTERSEAL

Coat affected area with Ardex WPM 320 (Retaining Wall 1 Part). Let coating dry then apply a second coat of Ardex WPM 320 (Retaining Wall 1 Part). While still wet broadcast dry sand onto the surface. Let Dry. When dry, plaster area with normal plaster system.

SAFETY DATA

Ardex WPM 240 (Shelter Primer) is solvent based and classified as Dangerous Goods Class 3 Packaging Group II material. It is highly flammable and should be used with appropriate safety equipment. Avoid inhalation or contact with eyes.

First Aid: If swallowed do not induce vomiting, contact a doctor or Poisons Information Centre immediately. In case of contact with eyes rinse thoroughly with water.

Spills & Leaks: Restrict access to area. Prevent material entering sewers and restricted areas. If possible cover liquid with earth, sand or absorbent material. Flush area with water.

Fire: Eliminate all sources of ignition. Firefighters should wear full protective clothing and self contained breathing apparatus with full face mask. Use dry chemicals foam or carbon dioxide to extinguish fire.

STORAGE

Ardex WPM 5000HD (Shelterseal HD) is supplied in white cardboard cartons. All rolls should be stored in a vertical position, covered area protected against UV radiation.

PACKAGING

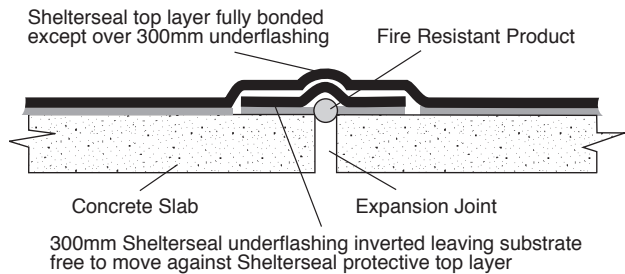
Roll size: 1m x 20m Roll weight: Approx 30kg

Other products: Shelter Primer 5 litres and 20 litres

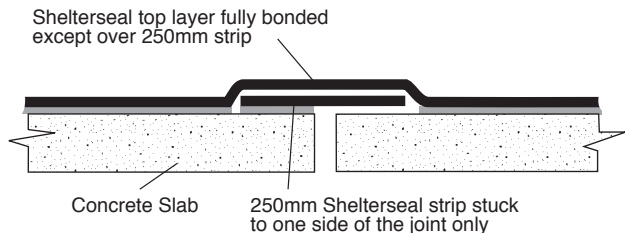
TECHNICAL PERFORMANCE DATA

| Properties | Typical Values | Test Method |
|----------------------------------|----------------|-------------|
| Thickness | 1.5mm | UNI 8202 |
| Weight | 1.6kg | UNI 8202 |
| Colour | Black | |
| Softening point | 110°C | |
| Temperature resistance (maximum) | 150°C | |
| Tensile strength (longitudinal) | 152kg/8cm | |
| Tensile strength (transverse) | 124kg/8cm | |
| Elongation (longitudinal) | 32% | ASTM D638 |
| Elongation (transverse) | 21% | ASTM D638 |
| Tearing (longitudinal) | 350N | UNI 8202/9 |
| Tearing (transverse) | 300N | UNI 8202/9 |
| Adhesion to primed concrete | 4.9 N/mm | ASTM D1000 |
| Adhesion to steel | 5.8 N/mm | ASTM D1000 |
| Puncture resistance | 220 N/65mm | ASTM E 154 |
| Vapour transmission rate | 0.3g/m/24hrs | ASTM E 96 |
| Cold flexibility | -30°C | ASTM D 146 |

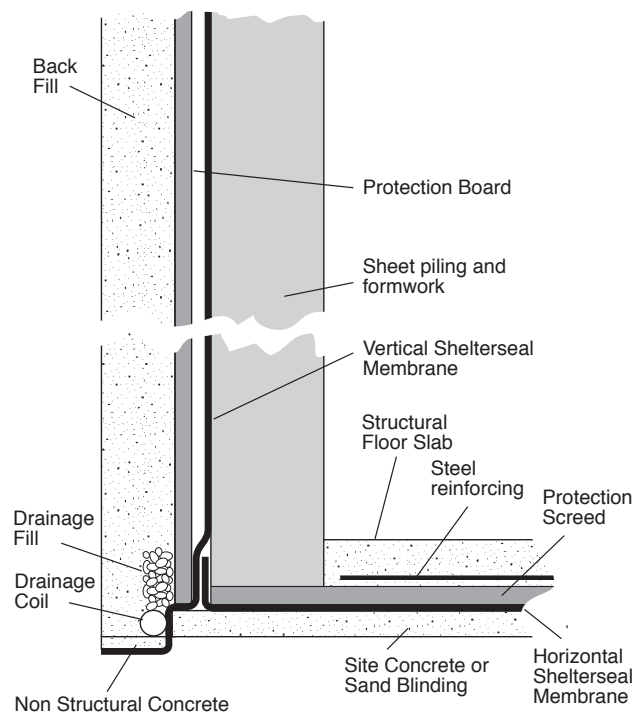
EXPANSION JOINT



CONSTRUCTION JOINT



BELOW GROUND DETAIL



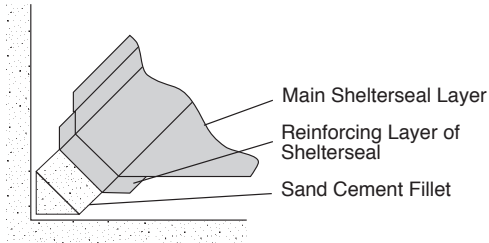
Typical details do not indicate number of layers required

ARDEX WPM 5000HD

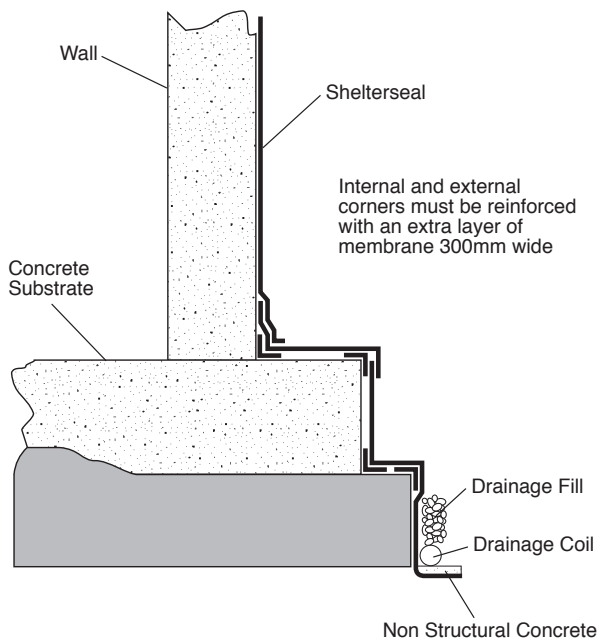
Shelterseal HD

Self Adhesive SBS Membrane

TYPICAL TURN UP DETAIL



REINFORING OF CORNERS



FINISHING DETAIL OPTIONS

