



ARDEX UD 150

Thin Layer Undertile Drainage Mat

Passive capillary drainage mat for low build height

Fully unbonded - loose laid over waterproofing

Non-degradable plastic

Suitable for external under tile applications

Removable without compromising waterproofing

ARDEX Australia Pty Ltd
20 Powers Road
Seven Hills NSW 2147
1300 788 780
technicalservices@ardexaustralia.com
www.ardexaustralia.com

ARDEX New Zealand Ltd
15 Alfred Street
Onehunga, Auckland 1061
0800 227 339
info@ardexnz.com
www.ardex.co.nz

ARDEX UD 150

Thin Layer Undertile Drainage Mat

PRODUCT DESCRIPTION

ARDEX UD 150 is the only passive capillary thin-layer drainage system that can be loose laid without bonding to the substrate. ARDEX UD 150 speeds up the drying process and helps reduce the build up of efflorescence. Being fully unbonded, the system can be removed without compromising the waterproofing membrane.

PRODUCT FEATURES AND BENEFITS

Unique, passive capillary, thin layer drainage mat laid without bonding to waterproofing.

A 6mm layer of air speeds up the drying time of the system, reducing risk of efflorescence.

Isolates tiled covering from substrate movements and stresses

Diffusion slits enable ventilation of residual moisture from cementitious substrates.

Unique combination of intelligent reinforced mesh to provide optimum rigidity and bonding.

ARDEX full system warranty.

Suitable Substrates:

OSB, plywood, compressed fibre cement (CFC), concrete, screeds waterproofed with ARDEX waterproofing WPM 1000, ARDEX Butynol, ARDEX Approved Liquid applied membranes (CONCRETE SUBSTRATE ONLY)

The maximum vertical deflection in the sheeted sub-floor permitted when measured at a position centrally between floor joists (using a straight edge which exceeds the joist span in length) shall not exceed the figures shown in the table below.

Suitable coverings:

Fully vitrified and ceramic tiles, porcelain, natural stone (excluding moisture sensitive) and mosaics.

PRODUCT INFORMATION

Composition:

ARDEX UD 150 Drainage sheets consist of non-degradable plastic (Polypropylene) membranes with channel-like profiles lengthwise and across, on the upper and lower side, pressure resistant. A fine mesh glass fibre weave is laminated onto the upper side.

Tiling:

Tiles can be installed over the ARDEX UD 150 using approved ARDEX adhesives such as ARDEX X 77+/- E 90 or ARDEX X 18+/- E 90. Movement joints shall be installed at a minimum of 3.0m centres. Grout using ARDEX Grout mixed with ARDEX Grout Booster at 50/50 ratio with water. Refer to the relevant datasheets for installation instructions. Other ARDEX adhesives may be suitable - Contact ARDEX technical services

Mat Colour:

Blue

Size of the Mat:

1.02 x 1.96 m = 2m²

Thickness:

9mm

Packaging:

Carton: 8 mats = 16 m²

Weight: 1 Carton (16 m²) 16kg

Static Pressure load:

3000 kg/m² ≈ 30 kN/m²

Floor Joist Centres Tile size	350mm	400mm (-16")	450mm	600 (-24")
<100mm shortest edge length (small)	No recommendation	No recommendation	No recommendation	No recommendation
100mm-350mm edge length (medium format)	1/360 0.8mm	1/360 1.1mm	1/360 1.3mm	1/360 <1.5mm (maximum value)
>350mm edge length (large format)	1/500 0.6mm	1/500 0.8mm	1/500 0.9mm	1/500 1.2mm



1. Check falls with level. That they have been achieved correctly to specifications.



2. Repair or patch any irregularities



3. Install perimeter or central drainage profiles. Ensure overlay clips are used.



3.a. Use a drop saw to cut profiles to size



3.b. Profile edge



3.c. Fasten profile edge



3.d.



3.e.

ARDEX UD 150

Thin Layer Undertile Drainage Mat



3.f. Install front clip



3.g. Optional gutter



4. Apply ARDEX STB tape to form overlap on all external drainage profiles



5. Install WPM 1000 to balcony as per ARDEX technical literature



6. Measure and cut the mat to achieve the correct fit.



6.a. Place mat with seams butted



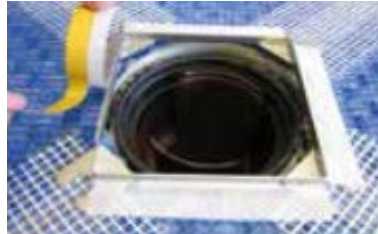
7. Install overlay tapes



7.a.



7.b.



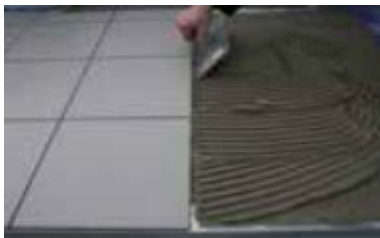
7.c.



7.d.



8. Commence with tiling, using ARDEX X18+/-E90 or ARDEX X77+/-E90



8.a. Install tiles in accordance with AS3958 ensure 100% coverage on back of tile



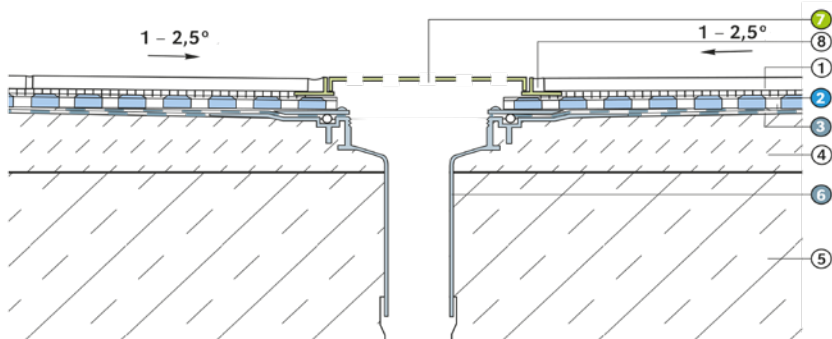
9. Install ARDEX Grout in accordance with the relevant datasheet. Ensure grout booster is used.



10. Install movement joints as per AS 3958-Maximum 3m apart.

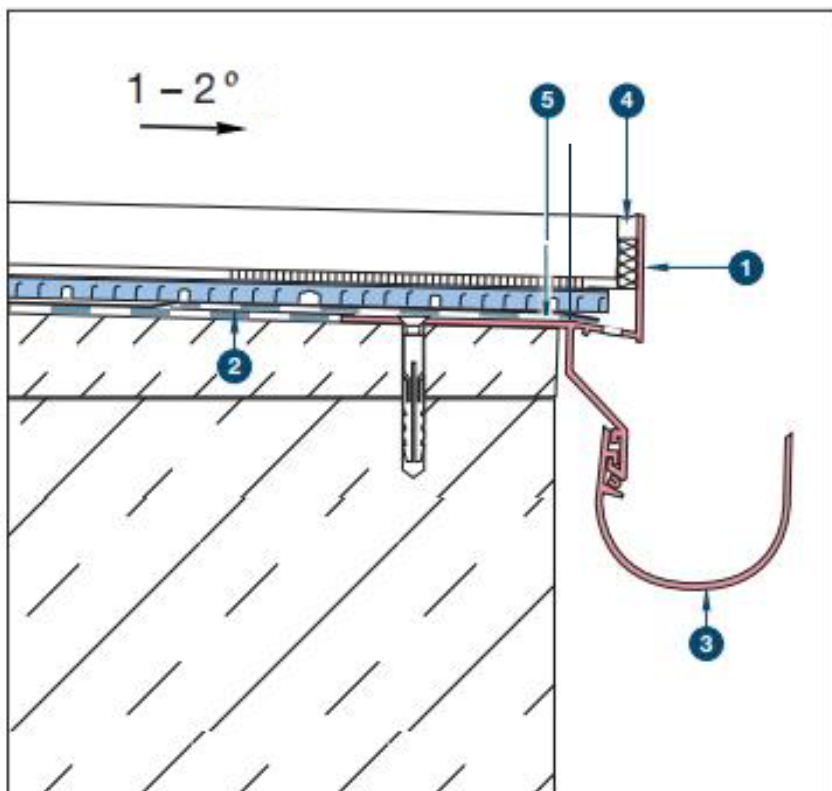
ARDEX UD 150

Thin Layer Undertile Drainage Mat



Clamp waste

1. Tiles
2. ARDEX UD 150
3. ARDEX waterproofing membrane
4. Screed
5. Substrate (concrete)
6. ARDEX clamp waste unit
7. ARDEX drain cover
8. ARDEX Sealant



Balcony Edge Detail

1. ARDEX UP 330 Profile

The profile is mechanically fixed to the substrate directly prior to the primary waterproofing layer.

2. ARDEX STB TAPE

Self-adhesive waterproof band used for sealing transitions and connections from a primary waterproofing layer.

WPM 1000 welded on top.

Seam tape used to form junctions when using traditional ARDEX Butynol.

3. ARDEX UP 450 Gutter system

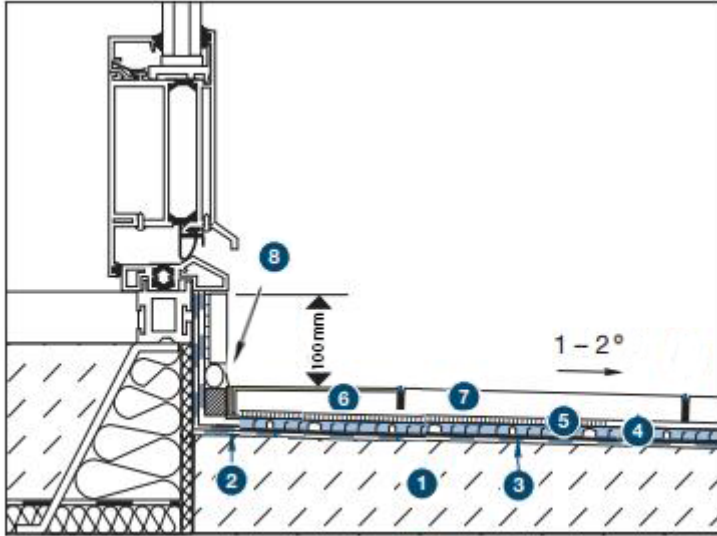
Balcony gutter system. (Indent only)

4. ARDEX Sealant

ARDEX Silicone for movement joints +connecting joints.

5. ARDEX Membrane

Should be applied to protect the substrate from water ingress – this should not be penetrated by fixings etc. Balustrades should be fixed to the side or underneath and should never penetrate the primary waterproofing layer.



Cantilever balcony Thin Drainage Assembly

1. Concrete Slab or screed to falls

Should be structurally sound and capable of carrying all expected static and dynamic loads. Should be fully dry and strong enough for its intended purpose. For further information please consult a structural engineer.

2. Bonded sloped screed or Slab

Screed should achieve wood float finish. Should be allowed to fully cure, dry and be suitably protected as per AS3958.

*Please note: Bonded screed min 15mm

3. ARDEX Membrane

Should be applied to protect the substrate from water ingress – this should not be penetrated by fixings etc. Balustrades should be fixed to the side or underneath and should never penetrate the primary waterproofing layer.

4. ARDEX UD150 Drainage System

Ensures rapid and permanent drainage of the covering structure.

5. ARDEX X 77/X 18

Frost and water resistant tile adhesive for use with tiles.

*Note: It may be suitable to use other ARDEX adhesives dependent upon the selected tile.

6. Porcelain Tile/Natural Stone

(Dimensions should not exceed 600 x 600mm)

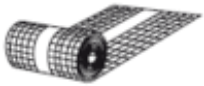
These should be confirmed as break-proof and frost and water resistant prior to fixing. Porous tiles are not recommended for use externally.

7. ARDEX Grout

ARDEX approved grout + ARDEX Grout Booster

8. ARDEX Silicone

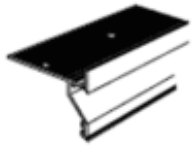
Accessories:



Mesh tape



Grate (indent)



Edge profile+Corner



Gutter (indent)



STB tape

Clamp waste

Additional Information:

Store horizontally; keep in their closed original packaging. Do not store in direct sunlight. Protect against pressure.

Temperature Resistance:

Continuous -30°C to 70°C.

Intermittent + 80 °C

N.B Tiling should not be carried below 5°C

INSTALLATION INSTRUCTIONS

NOTE: For further information on installation contact:

Technical Services:

ARDEX Australia Pty Ltd

1300 788 780

Toll Free Technical Services:

1800 224 070 (Australia)

ARDEX New Zealand Ltd

0800 227 339

DISCLAIMER

The technical details, recommendations and other information contained in this data sheet are given in good faith and represent the best of our knowledge and experience at the time of printing. It is your responsibility to ensure that our products are used and handled correctly and in accordance with any applicable New Zealand & Australian Standards, our instructions and recommendations and only for the uses they are intended. We also reserve the right to update information without prior notice to you to reflect our ongoing research and development program. Country specific recommendations, depending on local standards, codes of practice, building regulations or industry guidelines, may effect specific installation recommendations. The supply of our products and services is also subject to certain terms, warranties and exclusions, which may have already been disclosed to you in prior dealings or are otherwise available to you on request. You should make yourself familiar with them.

© ARDEX New Zealand Ltd 2017.

All aforementioned products are the trademarks of ARDEX New Zealand Ltd, its licensor's and affiliates.

ARDEXUD150 version 001/2017