



# WATERPROOFING AND ROOFING SYSTEMS 2023



SYSTEMARDEX  
PREMIUM PERFORMANCE





# CONTENTS

This is ARDEX	5
Innovation	6
System ARDEX	7
Warranties	9
Training	10
Sustainability	11
Support	12

## PRODUCT SYSTEMS

Flat Roofing - Residential and Commercial	14
Flat Roofing - Heat-Sensitive Substrate option	15
Flat Roofing - Torch Applied Concrete Substrate	16
Flat Roofing - Industrial Mechanically Fastened	17
Flat Roofing - Industrial Fully Adhered	18
Flat Roofing - Remedial	19
Flat Roofing - Warm Roof	20
Flat Roofing - Green Roof	21
Flat Roofing - Guttering	22
External Tiling - Tiled Deck	23
Deck System - Timber Deck	24
Below Grade System - Damp Proofing	25
Below Grade System - Torch Applied	26
Below Grade System - Tanking	27
Internal Tiling - Liquid Membrane	28
Internal Tiling - WeldTec™ Sheet Membrane	29
Internal Vinyl Floor Covering	30

## WELDTec™ ROOFING

ARDEX WPM 715	33
ARDEX WA 98 A	33

ARDEX WA 98 S	34
ARDEX WPM 710 DT	34

## BUTYNOL ROOFING

ARDEX BUTYNOL®	37
ARDEX WA 98	37
ARDEX WPM 295	38
ARDEX WPM 299	38
ARDEX DETAIL TAPE	39
ARDEX SEAM TAPE	39
ARDEX FLASHING TAPE	40

## TPO ROOFING

ULTRAPLY TPO 1.14MM	43
ULTRAPLY TPO 1.5MM	43
TPO BONDING ADHESIVE	44
ARDEX TPO MEMBRANE DETAILING	44
ARDEX FASTENERS	45
ARDEX HD SEAM PLATES	45
TPO UNREINFORCED FLASHING	46
ARDEX QUICKSEAM FLASHING	46

## TORCH-APPLIED ROOFING

ARDEX WPM 114	49
ARDEX WPM 117	49
ARDEX WPM 120	50
ARDEX WPM 180	50
ARDEX WPM 189	51
ARDEX WPM 189+	51





ARDEX WPM 240	52
ARDEX WPM 247	52
ARDEX BITUMINOUS SEALANT	53

#### DAMP-PROOF MEMBRANES

ARDEX WPM 3000X	55
ARDEX WPM 5000HD	55
ARDEX DRS 10 GC	56
ARDEX BITUMINOUS SEALANT	56
ARDEX WPM 240	57
ARDEX WPM 247	57

#### BELOW GRADE AND TANKING MEMBRANES

ARDEX WPM 179	59
ARDEX WPM 195	59
ARDEX WPM 196	60
ARDEX WPM 1000 RR	60
ARDEX WPM 1500	61
ARDEX DRS 10 GC	61
ARDEX WPM 1955	62

#### WELDTEC™ UNDERTILE MEMBRANES

ARDEX WPM 750	65
ARDEX WPM 1000	65
ARDEX WA 98	66
ARDEX WeldTec™ DETAILING	66
ARDEX UD 150	67
ARDEX UP 158	67

#### LIQUID MEMBRANES

ARDEX WPM 001	69
ARDEX WPM 002	69
ARDEX WPM 155 RAPID	70
ARDEX WPM 300	70
ARDEX DECKWEB	71
ARDEX ST TAPE	71
ARDEX MULTIPRIME	72
ARDEX P 9	72

#### THERMAL INSULATION BOARDS

ARDEX POLYISO INSULATION BOARD	75
ARDEX HD COVER BOARD	75
ARDEX INSULATION PLATES	76
ARDEX FASTENERS	76

#### DRAINAGE SYSTEMS

ARDEX UD 150	79
ARDEX DRS 10 GC	79
ARDEX UD 158	80

DISCLAIMER	83
------------	----



---

ARDEX HAS A HISTORY  
OF BREAKTHROUGH  
INNOVATIONS, WHICH  
HAVE CHANGED THE  
INDUSTRY.

---





---

# THIS IS ARDEX

---

For more than 70 years, ARDEX has been the quality leader for an entire industry. ARDEX specialises in high quality construction materials for substrate preparation, floor levelling, waterproofing and the fixing and grouting of surface materials.

When it comes to floor levelling and adhesives, waterproofing membranes and decorative finishes, ARDEX is the brand of choice for installers and wholesalers.

---

ARDEX is an independent family-owned business, which means that, in our permanent efforts to achieve market-shaping innovations, we are able to retain our most important tradition: uncompromising quality.

Strong internal growth and intelligent acquisitions in foreign markets have put the ARDEX Group on the map with 71 subsidiaries, and over 3,900 employees in over 50 countries. It's no coincidence ARDEX is regarded as the premium partner in the building materials sector.





# INNOVATION

Since it was founded in 1949, ARDEX has been known all over the globe as an innovative leader for specialist building products. As the inventors of self-levelling and smoothing compounds, ARDEX has a history of breakthrough innovations, that have driven and changed the market.

ARDEX products including Arditec, X 77, FG 8 Grout and WeldTec™ are firmly established as benchmarks for use worldwide.

The heart of ARDEX product development is the central laboratory in Witten, Germany. This lab partners with centres of excellence around the world to ensure the consistent quality of the products and maximum responsiveness to local market needs.

Innovation at ARDEX is not confined to research and development. It is an organic system comprising of cutting-edge customer insight research, close cooperation with associations and universities, and strong interaction between sales, marketing, technical services and purchasing.





# SYSTEM ARDEX

ARDEX is committed to developing products that are easy to use and offer high performance. Each product is the careful result of research and development combined with the input of contractors and installers to ensure absolute product compatibility.

Our systematic global Stage Gate Process for the introduction of new products is designed to optimise speed to market as well as to ensure superior quality and reliability for our customers. On-site product testing is an integral part of that process.

ARDEX products, systems and services are designed to ensure professional contractors have the competitive advantage of a lower total cost of installation through superior performance.



As a longstanding partner to trade, we know the practical requirements first-hand. Our vast experience with materials and working methods and our constant dialogue with customers in skilled trades are our most important source of inspiration. We draw on this to develop product systems that command respect in the market place. Our systems are optimally matched and extremely cost-effective thanks to their ease and speed of processing and high coverage.



**SYSTEMARDEX**  
PREMIUM PERFORMANCE





---

ARDEX IS THE BRAND OF  
CHOICE FOR SPECIFIERS  
AND INSTALLERS GLOBALLY

---





---

# WARRANTIES

---

The major point of difference between a SystemARDEX™ warranty and other warranties is the extent of cover provided for the owner or builder. Most competitor product warranties cover only the replacement of the defective product. That is further reduced through a discounting structure based on years of service prior to the claim. And usually, no cover is provided for the costs incurred in removing the defective product and installing the replacement product.



---

A SystemARDEX warranty covers:

- The costs of repair to which the product is applied and damaged by removal of the defective product where such proves necessary.
- The cost of reinstating or repairing the product or system including material costs of equal or equivalent products.
- The costs of rectifying any material covering the product.

SystemARDEX™ warranty claims are NOT discounted by years of service of defective products or any damage to the surface or material.

The SystemARDEX™ Warranty is project specific and warrants that the SystemARDEX™ combination of products that forms the total system are free from defects, are 100% compatible and the system combination is suitable for the purpose intended.

---





# TRAINING

Our industry, like any other, requires on-going training to keep up with changes in legislation, standards and materials. ARDEX offers training for both the applicator as well as staff.

For members of the construction industry committed to providing a high level of workmanship, ARDEX can help stay up to date, and increase both knowledge and confidence.

Training courses offered by ARDEX:

- CPD seminars for specifiers
- ARDEX undertile liquid waterproofing training
- ARDEX floor levelling training
- ARDEX WeldTec™ Membrane training
- ARDEX external waterproofing training - Butynol, TPO and Torch On
- ARDEX retail training

In order to encourage information exchange and creativity across borders, ARDEX strongly supports international career paths. We realise that we need the most talented people to maintain and extend our innovation leadership.







---

# SUSTAINABILITY

---

Sustainability is a business principle at ARDEX where we focus on creating products of premium quality and functional performance, coupled with exceptional reliability and durability. In addition, sustainability is one of the cornerstones of our corporate philosophy. We demonstrate our commitment to the pillars of sustainability – environment, economic and social, in both our daily work, as well as our long-term goals.



Long before it became a buzzword, the concept of sustainability was already an integral part of the ARDEX corporate philosophy.

- High-coverage ARDEX products takes care of large surface areas with minimal material, cutting down on processing, transport and waste packaging.
- Reduce back-and-forth travel to the building site with ARDEX products providing fast, easy installation.
- ARDEX products are engineered for a long life, meaning less wastage and more saved resources.
- ARDEX's remedial and repair products are great for refurbishments - eliminating the need for a demolition and new build using up more resources.
- High-quality ARDEX sub-floor smoothing compounds create extremely even surfaces, meaning far less adhesive is required to affix the flooring.



# SUPPORT SERVICES

The ARDEX support team is dedicated to eliminating guesswork, improving on site efficiencies and taking the risk out of product and system installation.

For information on products, field support, customer service, training products or product demonstrations please contact us:

**0800 227 339**

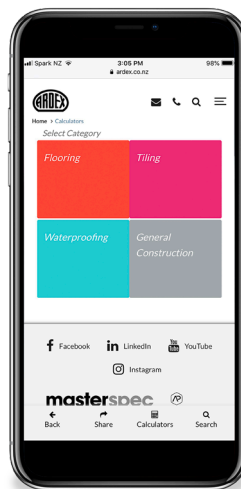
**ardex.co.nz**

Also visit our Facebook and Youtube pages for product news and updates, introduction to new products and access to our extensive video library.

 **[www.facebook.com/ARDEXNZ](https://www.facebook.com/ARDEXNZ)**

 **[www.youtube.com/ardexaustralia](https://www.youtube.com/ardexaustralia)**

 **[@ardexnewzealand](https://www.instagram.com/ardexnewzealand)**



The ARDEX website is optimised for mobile devices and features an easy-to-use product calculator tool, as well as other helpful tools available in the palm of your hand. Scan the QR code below to access the ARDEX website on your mobile phone.



**ardex.co.nz**

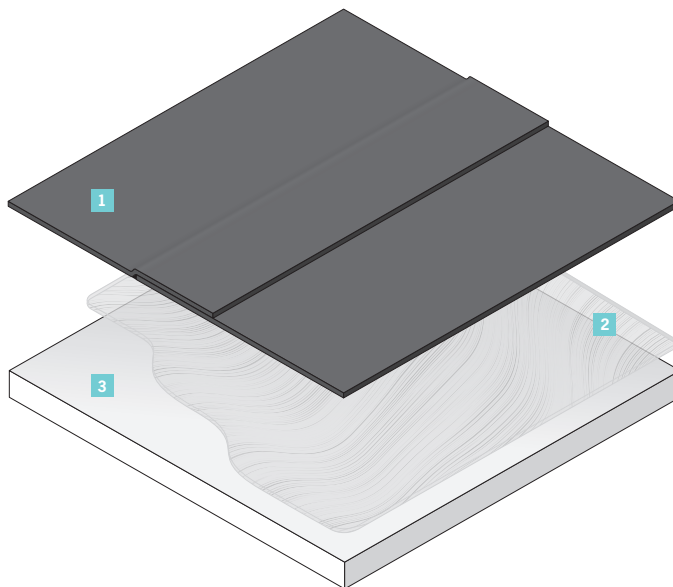






# FLAT ROOFING SYSTEM 1

Residential and Commercial option



## 1 ARDEX WPM 715

WeldTec™ 1.5mm  
weldable waterproofing  
membrane



## 2 ARDEX WA 98

Waterproofing  
membrane adhesive

3

## Selected substrate

- Concrete
- Timber
- Modified bitumen
- ARDEX Polyiso or  
HD Cover Board
- CFC sheet
- Galvanised metal
- Zinalume
- Polyurethane foam

## ARCHITECTS, SPECIFIERS AND DESIGNERS

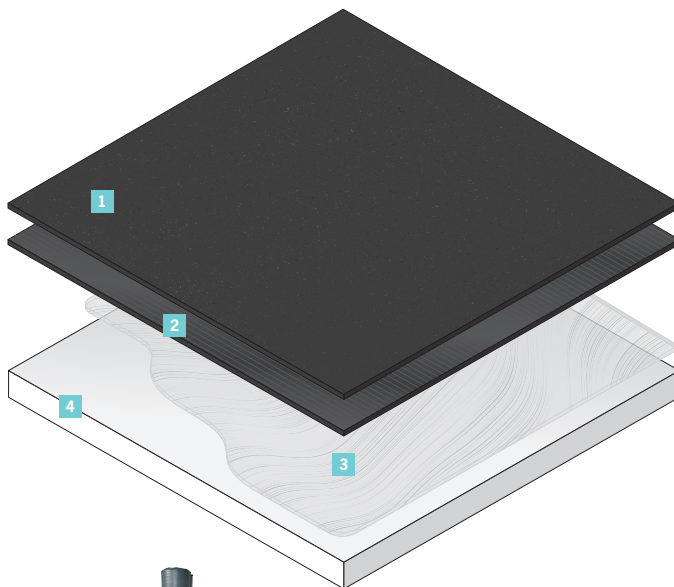
For specification support  
and project assistance,  
please contact ARDEX on  
0800 227 339, speak  
to your local ARDEX  
representative or visit  
[ardex.co.nz](http://ardex.co.nz)



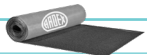


# FLAT ROOFING SYSTEM 2

Torch Applied - Heat-Sensitive Substrate option



1



## ARDEX WPM 189+

Ceramic-coated top layer  
bitumen membrane

2



## ARDEX WPM 117

Self-adhesive,  
fibre-reinforced  
bituminous membrane

3



## ARDEX WPM 240

Solvent-based  
bitumen primer

OR



## ARDEX WPM 247

Water-based  
bitumen primer

4

## Selected substrate

- Timber
- ARDEX Polyiso Board

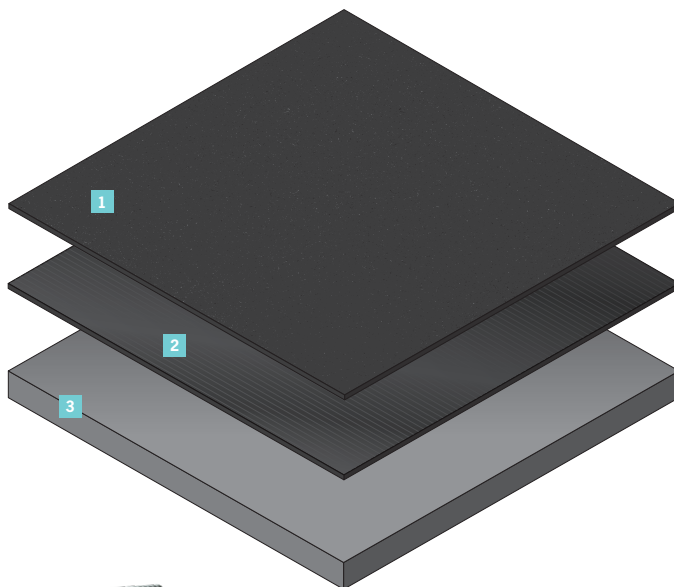
## ARCHITECTS, SPECIFIERS AND DESIGNERS

For specification support  
and project assistance,  
please contact ARDEX on  
0800 227 339, speak  
to your local ARDEX  
representative or visit  
[ardex.co.nz](http://ardex.co.nz)

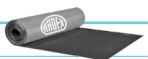


# FLAT ROOFING SYSTEM 3

Torch Applied - Concrete Substrate option



1



## **ARDEX WPM 189+**

Ceramic-coated top layer  
bitumen membrane

2



## **ARDEX WPM 114**

Vented base sheet  
for moisture issues

3

**Concrete substrate**

## **ARCHITECTS, SPECIFIERS AND DESIGNERS**

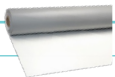
For specification support  
and project assistance,  
please contact ARDEX on  
0800 227 339, speak  
to your local ARDEX  
representative or visit  
[ardex.co.nz](http://ardex.co.nz)



# FLAT ROOFING SYSTEM 4

Industrial - Mechanically Fastened option

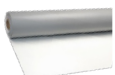
1



## **FIRESTONE ULTRAPLY TPO 1.14mm**

1.14mm TPO large-scale  
roofing membrane

OR



## **FIRESTONE ULTRAPLY TPO 1.5mm**

1.5mm TPO large-scale  
roofing membrane

2



## **ARDEX Seam Plates**

For fastening of  
ARDEX TPO membranes

3



## **ARDEX Heavy Duty Fasteners**

TPO and insulation  
fastening

4

## **ARDEX Insulation Plates**

For fastening of  
ARDEX Polyiso Board

5



## **ARDEX Polyiso Board**

PIR foam  
insulation board

OR



## **ARDEX HD Cover Board**

High-density Polyiso  
Cover Board

6



## **Optional ARDEX WPM 3000X**

Self-adhesive  
bituminous membrane

OR

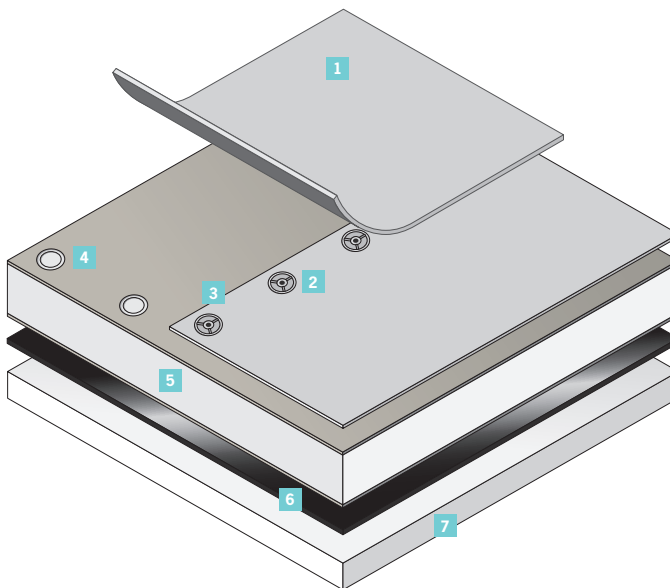


## **ARDEX WPM 5000 HD**

Industrial-strength,  
self-adhesive bituminous  
membrane

7

**Suitable substrate**



## **ARCHITECTS, SPECIFIERS AND DESIGNERS**

For specification support  
and project assistance,  
please contact ARDEX on  
0800 227 339, speak  
to your local ARDEX  
representative or visit  
[ardex.co.nz](http://ardex.co.nz)

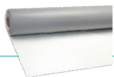




# FLAT ROOFING SYSTEM 5

Industrial - Fully Adhered option

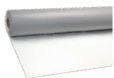
1



## **FIRESTONE ULTRAPLY TPO 1.14mm**

1.14mm TPO large-scale  
roofing membrane

OR



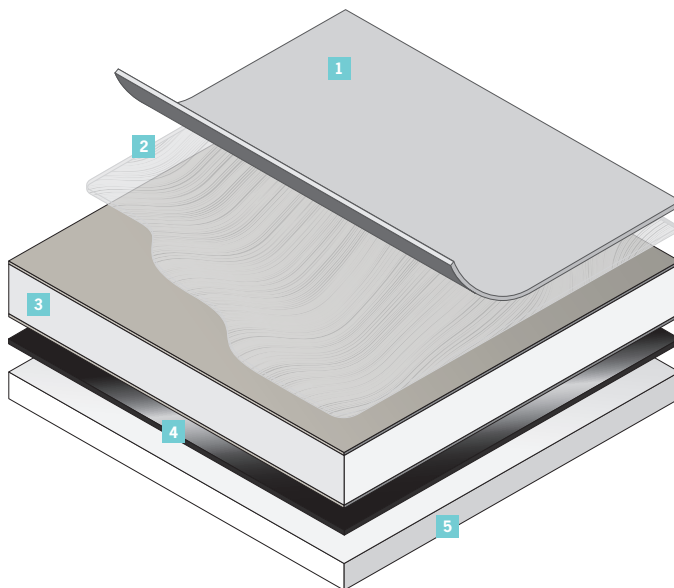
## **FIRESTONE ULTRAPLY TPO 1.5mm**

1.5mm TPO large-scale  
roofing membrane

2

## **ARDEX WPM 649**

TPO bonding adhesive



3



## **ARDEX Polyiso Board**

PIR foam  
insulation board fixed  
down with Polyiso  
adhesive or fasteners

OR



## **ARDEX HD Cover Board**

High-density Polyiso  
Cover Board

4



## **Optional ARDEX WPM 3000X**

Self-adhesive  
bituminous membrane

OR



## **ARDEX WPM 5000 HD**

Industrial-strength,  
self-adhesive bituminous  
membrane

5

**Suitable substrate**

## **ARCHITECTS, SPECIFIERS AND DESIGNERS**

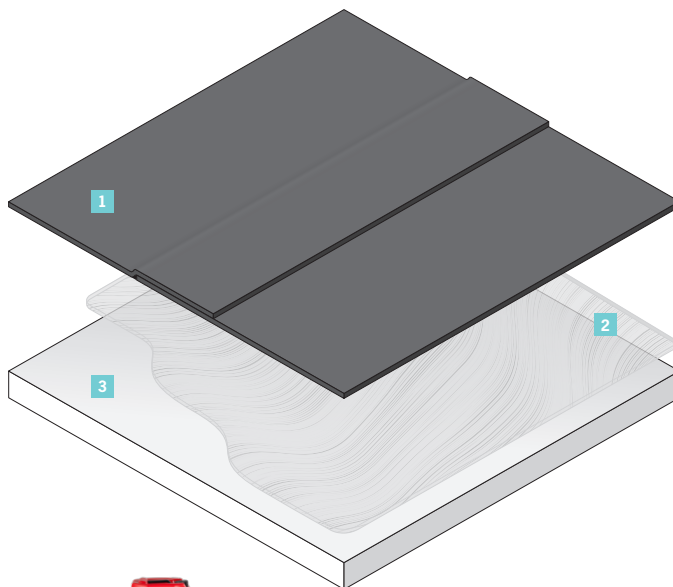
For specification support  
and project assistance,  
please contact ARDEX on  
0800 227 339, speak  
to your local ARDEX  
representative or visit  
[ardex.co.nz](http://ardex.co.nz)





# FLAT ROOFING SYSTEM 6

Remedial option



1



## ARDEX BUTYSEAL

WeldTec™ fleece-lined  
waterproofing membrane

2



## ARDEX WA 98

Waterproofing  
membrane adhesive

3

**Imperfect substrate  
or existing membrane**

## ARCHITECTS, SPECIFIERS AND DESIGNERS

For specification support  
and project assistance,  
please contact ARDEX on  
0800 227 339, speak  
to your local ARDEX  
representative or visit  
[ardex.co.nz](http://ardex.co.nz)



# FLAT ROOFING SYSTEM 7

Warm Roof option



## ARDEX WPM 715

WeldTec™ 1.5mm  
weldable waterproofing  
membrane



## ARDEX WA 98

Waterproofing  
membrane adhesive



## Optional ARDEX HD Cover Board

High-density Polyiso  
Cover Board fixed down  
with Polyiso adhesive or  
fasteners

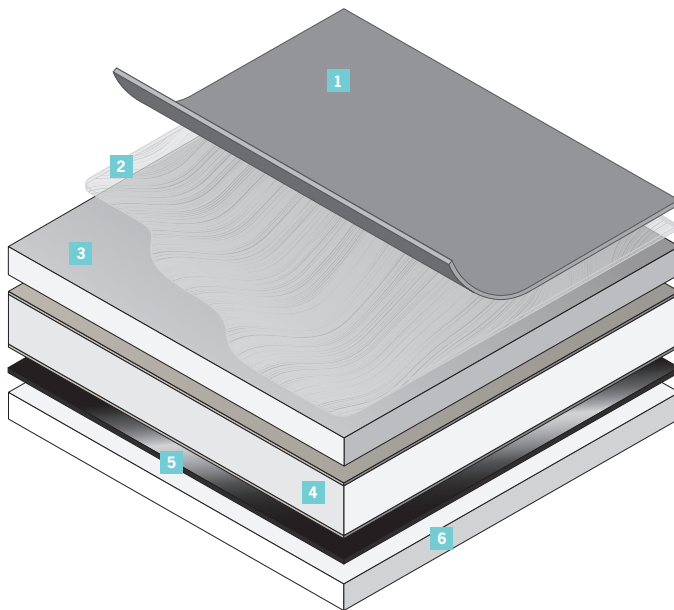


## ARDEX Polyiso Board

PIR foam insulation board  
fixed down with Polyiso  
adhesive or fasteners



## Suitable substrate



## Optional ARDEX WPM 3000X

Self-adhesive  
bituminous membrane

## ARCHITECTS, SPECIFIERS AND DESIGNERS

For specification support  
and project assistance,  
please contact ARDEX on  
0800 227 339, speak  
to your local ARDEX  
representative or visit  
[ardex.co.nz](http://ardex.co.nz)



# FLAT ROOFING SYSTEM 8

Green Roof option

1

**Selected green roof build up**



2

**ARDEX DRS 10 GC**

Drainage protection membrane

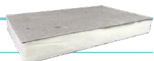
3



**ARDEX WPM 715**

WeldTec™ 1.5mm weldable waterproofing membrane

4



**ARDEX Polyiso Board**

PIR foam insulation board (fix down if required)

5

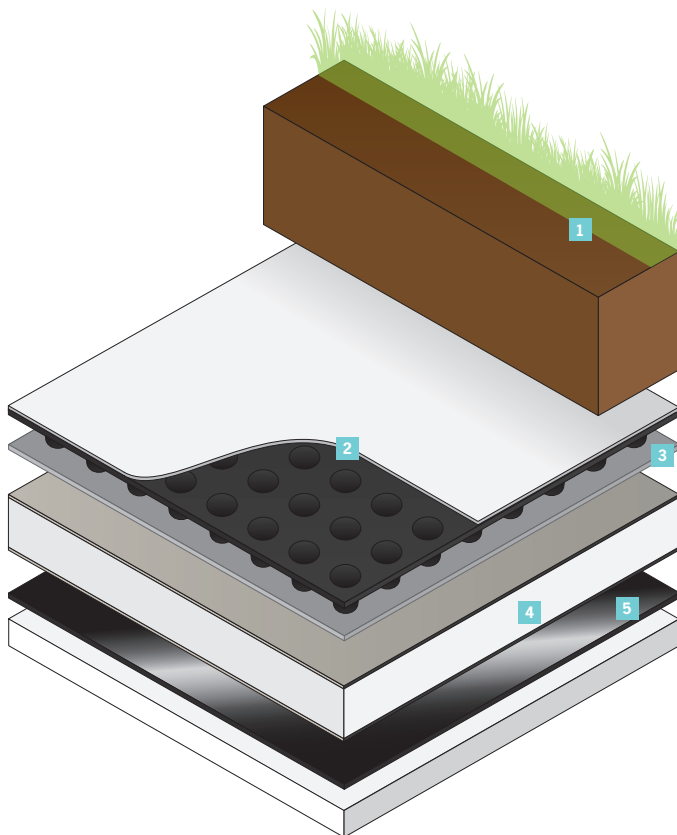


**Optional ARDEX WPM 3000X**

Self-adhesive bituminous membrane

6

**Substrate engineered to suit green roof**



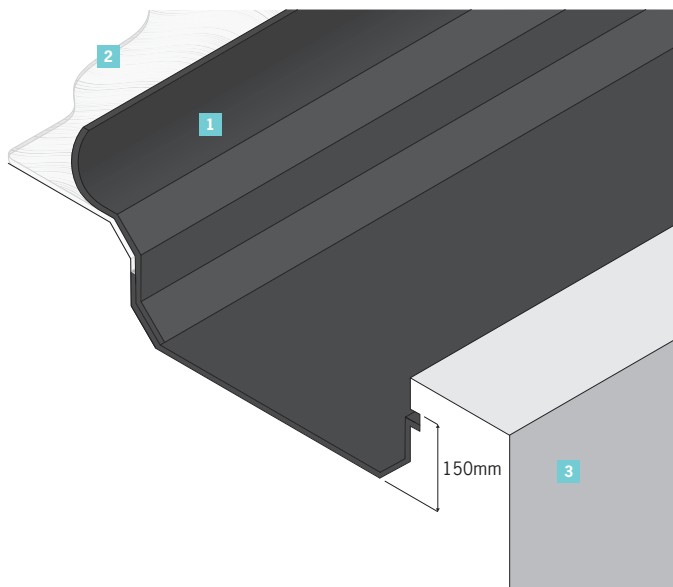
## ARCHITECTS, SPECIFIERS AND DESIGNERS

For specification support and project assistance, please contact ARDEX on 0800 227 339, speak to your local ARDEX representative or visit [ardex.co.nz](http://ardex.co.nz)



# FLAT ROOFING SYSTEM 9

Guttering



## 1

### ARDEX WPM 715

WeldTec™ 1.5mm  
weldable waterproofing  
membrane



## 2

### ARDEX WA 98

Waterproofing  
membrane adhesive



## 3

### Selected substrate

### ARCHITECTS, SPECIFIERS AND DESIGNERS

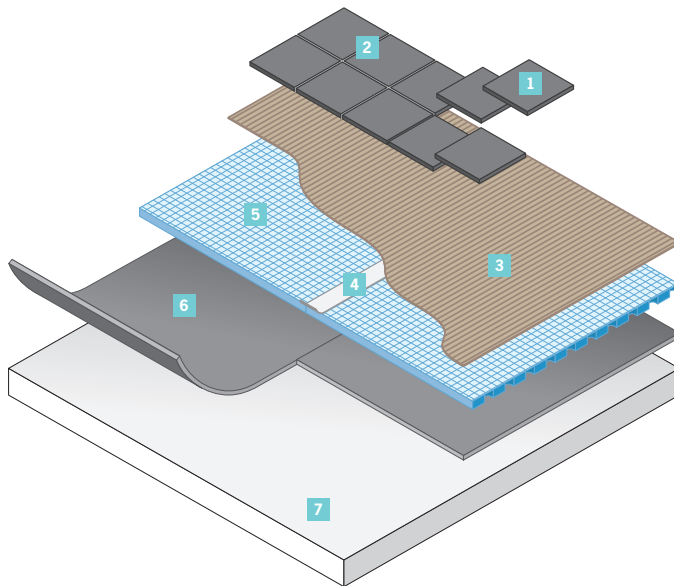
For specification support  
and project assistance,  
please contact ARDEX on  
0800 227 339, speak  
to your local ARDEX  
representative or visit  
[ardex.co.nz](http://ardex.co.nz)





# EXTERNAL TILING SYSTEM 1

Tiled Deck



1

Tiles

2



OR



OR



**ARDEX FS-DD**  
Tile grout for narrow joints

**ARDEX FG 8**  
Tile grout for standard joints

**ARDEX EG 15**  
Easy clean high performance epoxy grout

3



OR



**ARDEX X 77**  
Premium microtec tile adhesive

**ARDEX X 18**  
Non-slump, fibre-reinforced tile adhesive

4

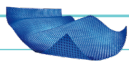


**ARDEX UD 158 Tape**  
Seam reinforcement mesh for UD 150

## ARCHITECTS, SPECIFIERS AND DESIGNERS

For specification support and project assistance, please contact ARDEX on 0800 227 339, speak to your local ARDEX representative or visit [ardex.co.nz](http://ardex.co.nz)

5



**ARDEX UD 150**  
Undertile drainage mat

6



**ARDEX WPM 1000**  
WeldTec™ external undertile waterproofing membrane.

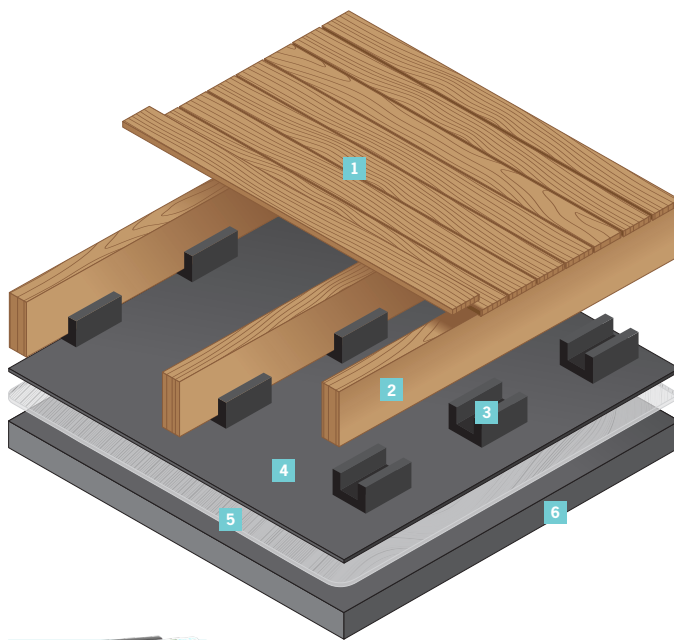
7

Deck substrate



# DECK SYSTEM 1

Timber Deck



1

**Timber decking**

2

**Timber bearer**

3



**DekCradle™**  
Timber decking support

4



**ARDEX WPM 715**  
WeldTec™ weldable  
waterproofing membranes

5



**ARDEX WA 98 A**  
Waterproofing  
membrane adhesive

6

**Concrete substrate**

## ARCHITECTS, SPECIFIERS AND DESIGNERS

For specification support  
and project assistance,  
please contact ARDEX on  
0800 227 339, speak  
to your local ARDEX  
representative or visit  
[ardex.co.nz](http://ardex.co.nz)



# BELOW GRADE SYSTEM 1

Damp Proofing

1

**Backfill**

2



**ARDEX DRS 10 GC**

Drainage protection membrane

3



**ARDEX Bituminous Sealant**

One-component bitumen-based sealant

4



**ARDEX WPM 3000 X**

Self-adhesive bituminous membrane

OR



**ARDEX WPM 5000 HD**

Industrial-strength, self-adhesive bituminous membrane

5



**ARDEX WPM 240**

Solvent-based bitumen primer

OR

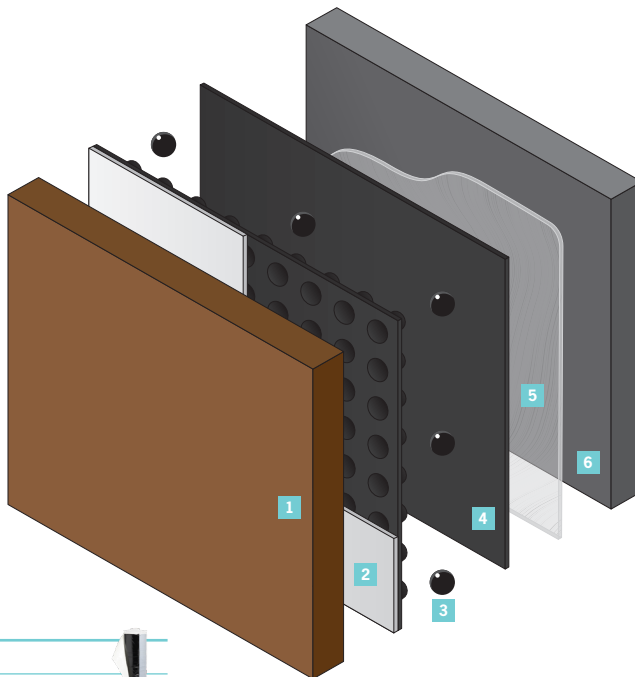


**ARDEX WPM 247**

Water-based bitumen primer

6

**Concrete substrate**



## ARCHITECTS, SPECIFIERS AND DESIGNERS

For specification support and project assistance, please contact ARDEX on 0800 227 339, speak to your local ARDEX representative or visit [ardex.co.nz](http://ardex.co.nz)



# BELOW GRADE SYSTEM 2

Torch Applied

1

**Backfill**

2



**ARDEX DRS 10 GC**

Drainage protection membrane

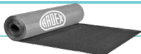
3



**ARDEX bituminous sealant**

One-component bitumen-based sealant

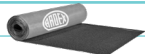
4



**ARDEX WPM 195**

Bituminous tanking membrane

OR



**ARDEX WPM 196**

Mineral-coated bituminous tanking membrane

5



**ARDEX WPM 240**

Solvent-based bitumen primer

OR

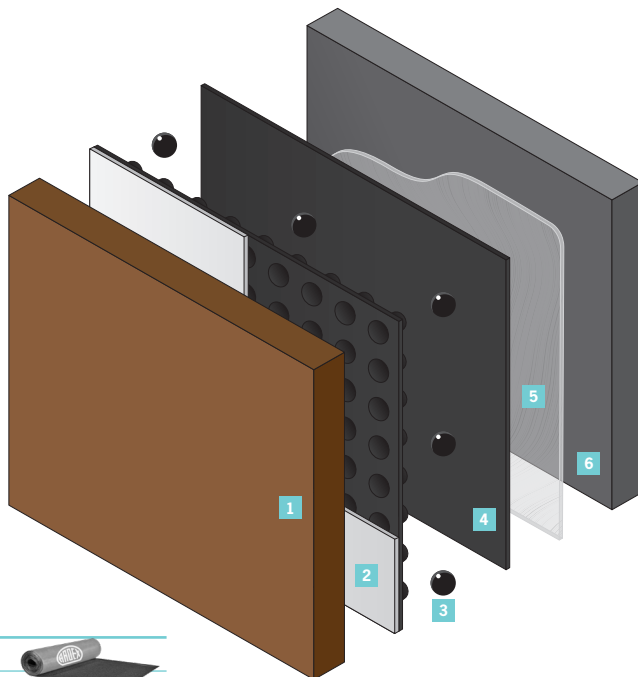


**ARDEX WPM 247**

Water-based bitumen primer

6

**Concrete substrate**



## ARCHITECTS, SPECIFIERS AND DESIGNERS

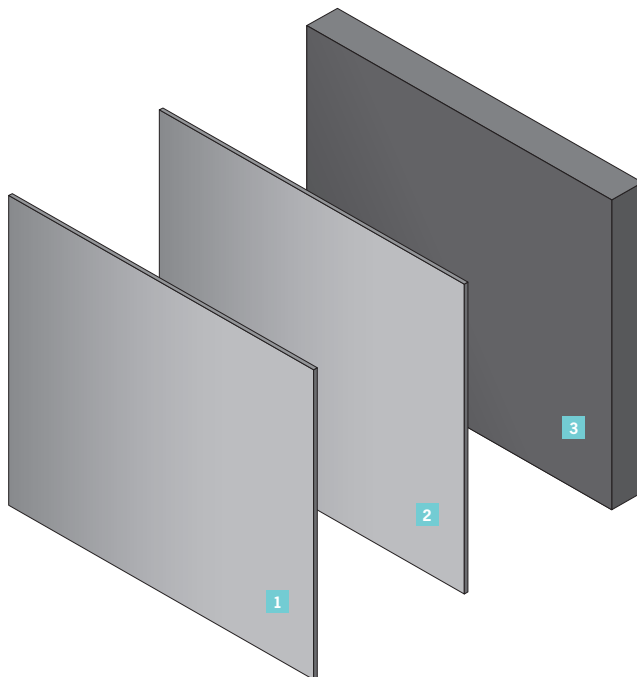
For specification support and project assistance, please contact ARDEX on 0800 227 339, speak to your local ARDEX representative or visit [ardex.co.nz](http://ardex.co.nz)





# BELOW GRADE SYSTEM 3

Pre-applied Tanking



1

**Sacrificial formwork  
or shotcrete**

2



**ARDEX WPM 1500**  
WeldTec Below-Grade  
Tanking Membrane

3

**Cast concrete**

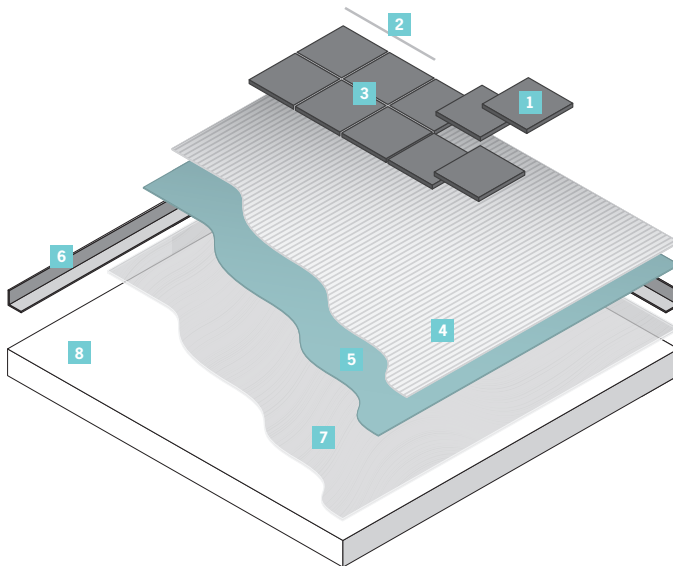
## **ARCHITECTS, SPECIFIERS AND DESIGNERS**

For specification support  
and project assistance,  
please contact ARDEX on  
0800 227 339, speak  
to your local ARDEX  
representative or visit  
[ardex.co.nz](http://ardex.co.nz)



# INTERNAL TILING SYSTEM 1

Liquid Membrane option



1

Tiles

2

**ARDEX SE**  
Silicone



3

**FS-DD**  
Tile grout for narrow joints



OR

**FG 8**  
Tile grout for standard joints



OR

**EG 15**  
Easy clean high performance epoxy grout



4

**ARDEX X 18**  
Non-slump, fibre-reinforced tile adhesive



5

**ARDEX WPM 155 Rapid**  
Fast-drying polyurethane undertile membrane



6

**ARDEX STB Tape**  
Self adhesive butyl tape



7

**ARDEX Multiprime**  
Water-based primer



8

**Selected substrate**  
Concrete, renders and screeds, fibre cement board, plywood

## ARCHITECTS, SPECIFIERS AND DESIGNERS

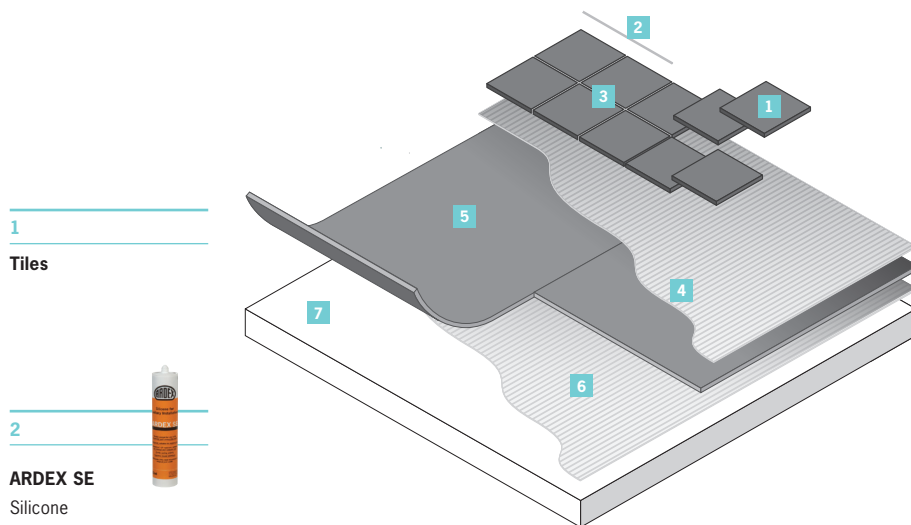
For specification support and project assistance, please contact ARDEX on 0800 227 339, speak to your local ARDEX representative or visit [ardex.co.nz](http://ardex.co.nz)





# INTERNAL TILING SYSTEM 2

WeldTec™ Sheet Membrane option



1

**Tiles**

2

**ARDEX SE**  
Silicone



3

**FS-DD**  
Tile grout for narrow joints



**OR**

**FG 8**  
Tile grout for standard joints



**OR**

**EG 15**  
Easy clean high performance epoxy grout



4

**ARDEX X 18**  
Non-slump, fibre-reinforced tile adhesive



5

**ARDEX WPM 750**  
WeldTec™ internal undertile waterproofing membrane



6

**ARDEX WA 88**  
Universal water-based contact adhesive



7

**Selected substrate**  
Concrete, renders and screeds, fibre cement board, plywood

## ARCHITECTS, SPECIFIERS AND DESIGNERS

For specification support and project assistance, please contact ARDEX on 0800 227 339, speak to your local ARDEX representative or visit [ardex.co.nz](http://ardex.co.nz)



# INTERNAL VINYL SYSTEM 1

Vinyl Floorcovering

1

Vinyl floorcovering

2

**ARDEX  
AF 145**

Pressure-sensitive  
floorcovering adhesive

OR

**ARDEX  
AF 180 MS**

One-component heavy  
duty adhesive

3

**ARDEX  
Feather Finish**

Cement-based smoothing  
compound

4

**ARDEX  
Deckweb**

Woven polyester  
reinforcement cloth

5

**ARDEX WPM 002** OR  
Two-part undertile  
waterproofing membrane

**ARDEX WPM 155 Rapid**  
Fast-drying polyurethane  
undertile membrane

6

**ARDEX  
Multiprime**

Water-based primer

OR

**ARDEX  
WPM 300**

Water-based epoxy  
membrane for controlling  
hydrostatic pressure

7

**ARDEX  
K 900 BF**

Bulk-fill levelling  
compound

OR

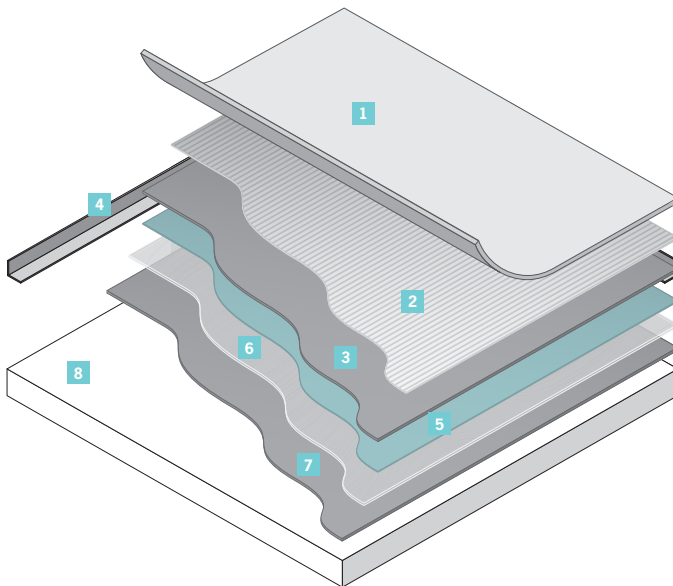
**ARDEX  
A 38**

Rapid-setting screed  
cement

8

**Selected Substrate**

Concrete, renders and  
screeds, fibre cement  
board, plywood



## ARCHITECTS, SPECIFIERS AND DESIGNERS

For specification support  
and project assistance,  
please contact ARDEX on  
0800 2 ARDEX, speak  
to your local ARDEX  
representative or visit  
[www.ardex.co.nz](http://www.ardex.co.nz)









WeldTec™

# WELDTEC™ ROOFING







## ARDEX WPM 715

WELDTec™ WELDABLE  
WATERPROOFING MEMBRANE



ARDEX WPM 715 is a 1.5mm weldable waterproofing membrane with properties which resist ageing from heat, sunlight and ozone.

- Welded laps and seams for fast installation
- Excellent resistance to atmospheric agents

### Typical use

- External
- Horizontal or vertical
- Decks and roofs

### Substrates

- Concrete
- Plywood
- Modified bitumen
- Malthoid
- ARDEX Polyiso or HD Cover Board
- Orientated strandboard
- CFC sheet
- Timber
- Galvanised metal
- Zinalume
- Polyurethane foam

**Gauge** 1.5mm

**Dimensions** 20m x 1.4m (28m<sup>2</sup>)

**Codes** Black and Grey: 32341

## ARDEX WA 98 A

WATERPROOFING  
MEMBRANE ADHESIVE



ARDEX WA 98 A is a high-performance roofing contact adhesive.

- Contact adhesive
- Solvent-based
- Ideal for bonding large areas

### Typical use

- External
- Horizontal or vertical
- Adhering ARDEX WeldTec™ and Butynol sheet membranes

### Suitable membrane types

- WeldTec™
- Butynol

**Working time** 15 – 60 minutes

**Coverage** 4 – 8m<sup>2</sup> bond area per litre

**Codes** 20L: 13052  
4L: 10870  
1L: 10869



## ARDEX WPM 98 S

### ARDEX WA 98 SOLVENT



Formerly known as ARDEX WPM 290. ARDEX WA 98 S is a mild solvent suitable for cleaning down surfaces and waterproofing membranes contaminated with dried ARDEX WA 98.

- Coagulates for easier removal
- Reduced damage to surfaces

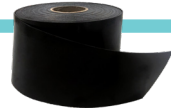
#### Typical use

- Cleaning surfaces prior to adhesion
- Thinning ARDEX WA 98 when needed
- Re-activating dry adhesive surfaces
- Cleaning brushes and rollers
- Removing excess adhesive

<b>Codes</b>	20L: 13050
	4L: 10874
	1L: 10873
	0.5L: 10872
	0.25L: 10871

## ARDEX WPM 710 DT

### WELDTEC™ EXTERNAL DETAIL TAPE



ARDEX WPM 710 DT is a weldable detail tape for use with external ARDEX WeldTec membranes.

- Available as tapes or patches
- Weldable
- Resistant to atmospheric agents

#### Typical use

- External
- Horizontal and vertical applications
- Detailing ARDEX WeldTec Membranes

<b>Colours</b>	Black, Dove Grey
<b>Widths</b>	Black 150mm patch: 32461
	Black 300mm: 32443
	Dove Grey 100mm: 32545
	Dove Grey 150mm patch: 32462
	Dove Grey 200mm: 37304
<b>Gauge</b>	Dove Grey 300mm: 32444
	1mm
<b>Tape length</b>	20m







# BUTYNOL ROOFING





## ARDEX BUTYNOL®

BUTYL ROOFING AND  
TANKING MEMBRANE



ARDEX Butynol® is a synthetic rubber membrane with properties which resist ageing from heat, sunlight and ozone.

- Single-ply
- Flexible rubber synthetic membrane
- Remains flexible at low temperatures

### Typical use

- External
- Horizontal or vertical applications
- Decks, roofs, gutters

### Substrates

- Concrete
- Plywood
- ARDEX Polyiso or HD Cover Board
- Orientated strandboard
- CFC sheet
- Timber
- Galvanised metal
- Zincalume

**Colours** Various

**Gauge** Available in numerous thicknesses

**Standard Dimensions\*** 17.86m x 1.4m (25m<sup>2</sup>)

\*Dimensions are customisable

## ARDEX WA 98 A

WATERPROOFING  
MEMBRANE ADHESIVE



ARDEX WA 98 A is a high-performance roofing contact adhesive.

- Contact adhesive
- Solvent-based
- Ideal for bonding large areas

### Typical use

- External
- Horizontal or vertical
- Adhering ARDEX WeldTec™ and Butynol sheet membranes

### Suitable membrane types

- WeldTec™
- Butynol

**Working time** 15 – 60 minutes

**Coverage** 4 – 8m<sup>2</sup> bond area per litre

**Codes**  
20L: 13052  
4L: 10870  
1L: 10869





## ARDEX WPM 98 S

ARDEX WA 98 SOLVENT



Formerly known as ARDEX WPM 290. ARDEX WA 98 S is a mild solvent suitable for cleaning down surfaces and waterproofing membranes contaminated with dried ARDEX WA 98 S.

- Coagulates for easier removal
- Reduced damage to surfaces

### Typical use

- Cleaning surfaces prior to adhesion
- Thinning ARDEX WA 98 S when needed
- Re-activating dry adhesive surfaces
- Cleaning brushes and rollers
- Removing excess adhesive

<b>Codes</b>	20L: 13050
	4L: 10874
	1L: 10873
	0.5L: 10872
	0.25L: 10871

## ARDEX WPM 299

SEAM PRIMER



ARDEX WPM 299 is primer-adhesive used with various ARDEX systems.

- Water resistant
- Improves seam tape adhesion
- Fast drying

### Typical use

- External
- Bonding primer for ARDEX products

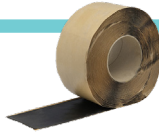
<b>Coverage</b>	18 – 23m <sup>2</sup> per litre
-----------------	---------------------------------

<b>Codes</b>	4L: 10205
--------------	-----------



## ARDEX DETAIL TAPE

SELF-ADHESIVE  
BUTYL TAPE



ARDEX Detail Tape is a self-adhesive, butyl-based tape, self-protected by a polypropylene fleece.

- Excellent adhesion at low temperatures
- Excellent heat stability
- High workability

### Typical use

- Horizontal or vertical applications
- Decks, roofs, gutters
- Below-grade applications

### Substrates

- Galvanised metal
- Zincalume
- ARDEX Waterproofing membranes\*

**Dimensions** 30.4m x 150mm

**Code** 10584

## ARDEX SEAM TAPE

SEAM TAPE FOR GENERAL  
LAP BONDING



ARDEX Seam Tape is a pressure-sensitive adhesive tape for bonding laps and seams of ARDEX Butynol membranes.

- Provides strong, watertight seams
- Fast and easy installation
- High tack

### Substrates

- ARDEX Waterproofing membranes and outlets\*

**Dimensions** 30.4m x 50mm

**Code** 10539

\*Contact ARDEX for other applications



# ARDEX FLASHING TAPE



A malleable tape for moulding in gussets, pipe flashings and awkward situations. Supplied in 100mm x 5m rolls. Flashing tape must not be left exposed. A cover strip of membrane or detail tape must be applied over flashing tape to finish.

Flashing tape can be welded to when used with the WeldTec® range.

ARDEX WA 98 must be used to adhere to the substrate and when used with the Butynol® system.

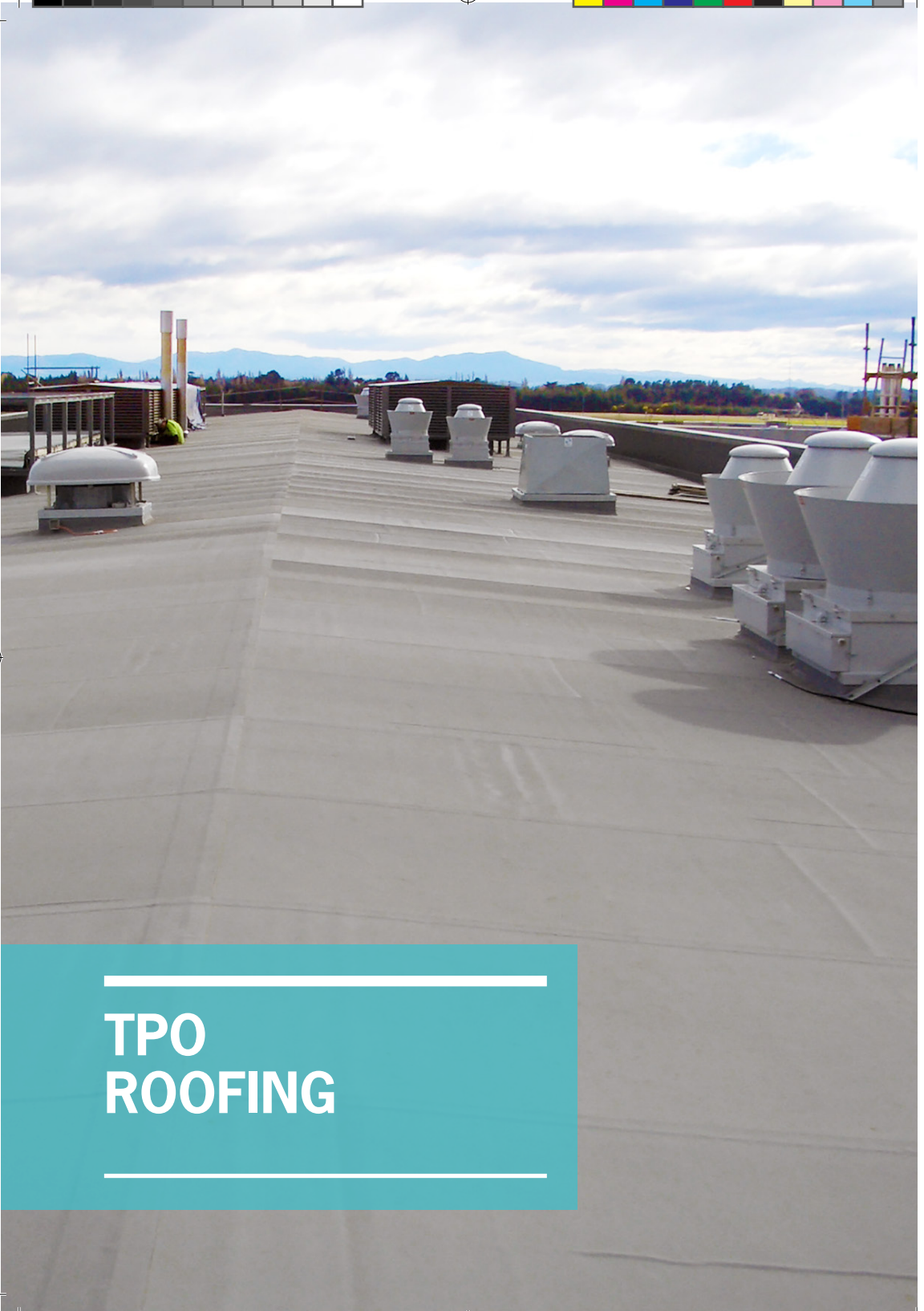
<b>Dimensions</b>	100mm x 5m roll
-------------------	-----------------

<b>Code</b>	10397
-------------	-------









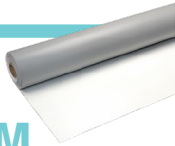
# TPO ROOFING





## ULTRAPLY TPO 1.14MM

### TPO ROOFING MEMBRANE 1.14MM



Ultraply TPO roof membrane is a high-performance waterproofing membrane, that is environmentally friendly, fast to install and safe to use. The benefits of TPO membranes range from heat reflectivity and energy efficiency to green roofing systems.

Previously known as ARDEX WPM 612.

- Energy efficient
- Fast to install
- No toxic emissions

#### Typical use

- External
- Roofing
- Low-slope
- Large roof areas

**Gauge** 1.14mm

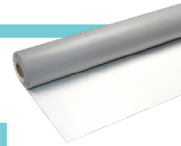
**Dimensions** 30.5m x 3.05m (93m<sup>2</sup>)

**Colour** Grey

**Code** 25225

## ULTRAPLY TPO 1.5MM

### TPO ROOFING MEMBRANE 1.5MM



Ultraply TPO roof membrane is a high-performance waterproofing membrane, that is environmentally friendly, fast to install and safe to use. The benefits of TPO membranes range from heat reflectivity and energy efficiency to green roofing systems.

Previously known as ARDEX WPM 615.

- Energy efficient
- Fast to install
- No toxic emissions

#### Typical use

- External
- Roofing
- Low-slope
- Large roof areas

**Gauge** 1.5mm

**Dimensions** 30.5m x 3.05m (93m<sup>2</sup>)

**Colour** Grey

**Code** 13506





## TPO BONDING ADHESIVE



Ultraply TPO Bonding Adhesive is a solvent based contact adhesive designed specifically for bonding Ultraply TPO membranes to approved insulations in addition to wood, metal, masonry and other acceptable substrates. Previously known as ARDEX 649.

<b>Coverage</b>	1.40m <sup>2</sup> to 1.47m <sup>2</sup> per litre may be obtained depending on the substrate
<b>Substrates</b>	<ul style="list-style-type: none"><li>• Wood</li><li>• Masonry</li><li>• Metal</li><li>• Others – check with your local ARDEX representative</li></ul>
<b>Packaging</b>	18.9L
<b>Code</b>	22082

## ARDEX TPO MEMBRANE DETAILING



ARDEX provide a range of pre-cut and moulded TPO flashing and detailing products.

- Pipe boots and flashings
- Corners
- Pockets

<b>Dimensions</b>	Refer to <a href="http://ardex.co.nz">ardex.co.nz</a> for dimensions, quantities and colours of each product
-------------------	--



## ARDEX FASTENERS

### TPO AND INSULATION FASTENING



ARDEX Fasteners are Heavy Duty Fasteners that are specifically designed for mechanical attachment of ARDEX TPO membranes and roofing insulation.

- 500 or 1000 pcs, dependent on screw length

#### Typical use

- External roofing
- With ARDEX thermal insulation systems
- Mechanically fastened systems

#### Thread size

- Heavy Duty: 6.7mm

#### Screw Length

- From 32mm to 356mm

## ARDEX HD SEAM PLATES

### TPO SEAM PLATES



ARDEX HD Seam Plates are designed for attaching ARDEX TPO membranes to approved substrates in conjunction with ARDEX Heavy Duty Fasteners.

- Galvalume® - Sheet steel material
- 4 inner and 4 outer eyehook extensions for holding power
- Corrosion resistance

<b>Dimensions</b>	Diameter circle: 60.3mm
	Gauge: 0.94mm
	Hole diameter: 6.7mm

<b>Code</b>	Pack of 1000: 12609
-------------	---------------------



## TPO UNREINFORCED FLASHING



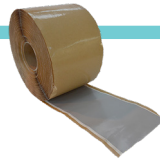
TPO Unsupported Flashing is a non-reinforced Thermoplastic PolyOlefin Membrane designed to be used in roofing applications where ARDEX pre-moulded TPO accessory products are not appropriate. Previously known at ARDEX WPM 623.

<b>Tear Resistance</b>	≥400 N
------------------------	--------

<b>Packaging</b>	0.61m x 15.25m roll
------------------	---------------------

<b>Code</b>	11052
-------------	-------

## ARDEX QUICKSEAM FLASHING



### TPO FLASHING MEMBRANE

ARDEX TPO QuickSeam Flashing is a non-reinforced Thermoplastic Polyolefin membrane laminated to a white cured seaming tape.

- For flashing metal roof edge profiles
- Excellent moisture resistance
- Resistant to heat

<b>Colours</b>	Tape: White Flashing: White or Grey
----------------	--

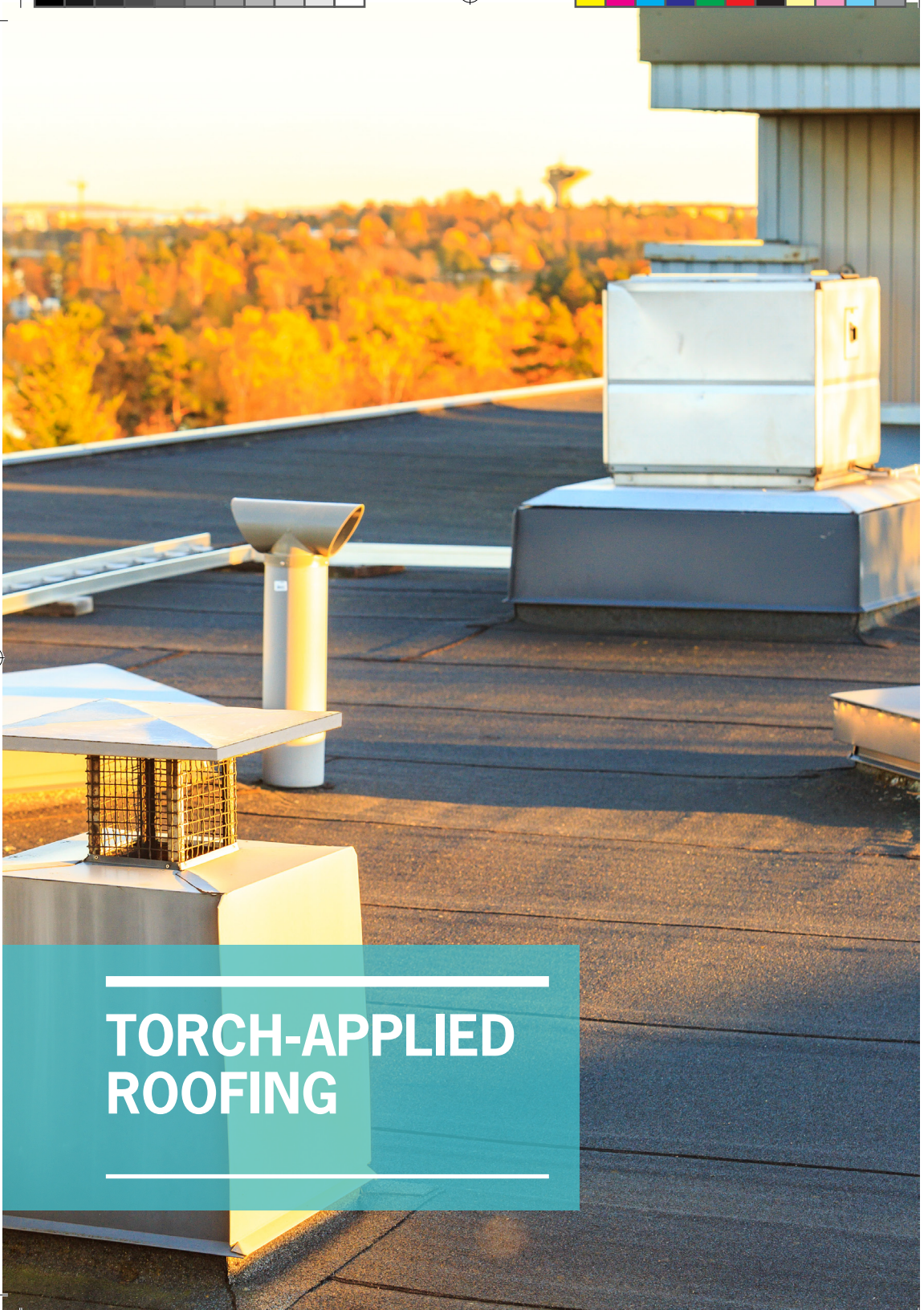
<b>Gauge</b>	Tape: 0.89mm Flashing: 0.76mm
--------------	----------------------------------

<b>Dimensions</b>	30.5m x 146mm
-------------------	---------------

<b>Code</b>	Grey: 12956
-------------	-------------







# TORCH-APPLIED ROOFING





## ARDEX WPM 114

VENTED BASE SHEET  
FOR MOISTURE ISSUES



ARDEX WPM 114 is an APP modified bitumen membrane vented base sheet, for use in applications where there may be substrate moisture issues.

- Suitable for substrates with moisture issues
- Excellent cold flexibility

### Typical use

- External
- Roofing
- Base sheet in multi-layer systems

### Substrates

- Concrete screeds

**Gauge** 4mm

**Dimensions** 8m x 1m (8m<sup>2</sup>)

**Code** 32358

## ARDEX WPM 117

SELF-ADHESIVE,  
FIBRE-REINFORCED  
BITUMINOUS MEMBRANE



ARDEX WPM 117 is a self-adhesive SBS modified bitumen membrane providing absolute waterproofing and resistance to hydrostatic pressure.

- Reinforced with fibreglass
- Peel and stick installation

### Typical use

- General waterproofing
- Base layer over heat sensitive substrates
- Areas where fire and torching must be avoided

### Substrates

- Timber
- Zincolume®
- Aluminium
- Concrete
- ARDEX Polyiso Board

**Gauge** 2mm

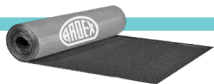
**Dimensions** 15m x 1m (15m<sup>2</sup>)

**Code** 24560



## ARDEX WPM 120

BASE/MID-LAYER  
BITUMINOUS MEMBRANE



ARDEX WPM 120 is an APP modified bitumen membrane, with a sanded or talc top finish and a heat-sensitive film underneath.

- High puncture resistance
- Heat welded installation

### Typical use

- External
- Balconies, terraces, roofs
- Base or mid layer in multi-layer systems

### Substrates

- Concrete

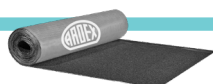
**Gauge** 2.5mm

**Dimensions** 15m x 1m (15m<sup>2</sup>)

**Code** 10525

## ARDEX WPM 180

MULTI-LAYER REINFORCED  
BITUMINOUS MEMBRANE



ARDEX WPM 180 is an APP modified bitumen membrane, reinforced with fibreglass and polyester and protected by a heat-sensitive film on the underside.

- Combined polyester and fibreglass reinforcement
- Heat welded installation

### Typical use

- External
- Balconies, terraces, roofs
- Multi-layer membrane

### Substrates

- Concrete

**Gauge** 3.5mm

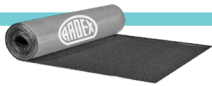
**Dimensions** 10m x 1m (10m<sup>2</sup>)

**Code** 10528



## ARDEX WPM 189

MINERAL-COATED TOP  
LAYER BITUMEN MEMBRANE



ARDEX WPM 189 is a dual-layer modified bitumen membrane, comprised of an SBS bottom layer for cold flexibility and APP (Atactic polypropylene) top layer for UV resistance.

- Excellent cold flexibility and elasticity
- Excellent resistance to atmospheric agents
- High puncture resistance

### Typical use

- External
- Balconies, terraces, roofs
- As a cap sheet over base layers

### Substrates

- Base layers

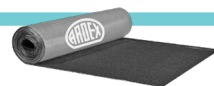
**Gauge** 4mm

**Dimensions** 10m x 1m (10m<sup>2</sup>)

**Codes** Black: 11324  
Grey: 11242

## ARDEX WPM 189+

CERAMIC-COATED TOP  
LAYER BITUMEN MEMBRANE



ARDEX WPM 189+ is a 5mm dual-layer modified bitumen membrane, comprised of an SBS (styrene-butadiene-styrene) bottom layer for cold flexibility and APP top layer for UV resistance.

- Excellent cold flexibility and elasticity
- Excellent resistance to atmospheric agents
- Ceramic chip for longevity and colour fastness

### Typical use

- External
- Balconies, terraces, roofs
- As a cap sheet over base layers

### Substrates

- Base layers

**Gauge** 5mm

**Dimensions** 8m x 1m (8m<sup>2</sup>)

**Codes** Grey: 32325  
Black Gloss: 32326





## ARDEX WPM 240

### SOLVENT-BASED BITUMEN PRIMER



ARDEX WPM 240 is a solvent-based primer used to seal and prepare substrates prior to installing ARDEX bituminous membranes.

- Solvent-based
- For use with ARDEX bitumen systems
- Fast drying

<b>Coverage</b>	5m <sup>2</sup> per litre
-----------------	---------------------------

<b>Codes</b>	20L Black: 10534 20L Clear: 30626
--------------	--------------------------------------

## ARDEX WPM 247

### WATER-BASED BITUMEN PRIMER



ARDEX WPM 247 is a water-based primer used to seal and prepare substrates prior to installing ARDEX bituminous membranes.

- Water-based
- For use with ARDEX bitumen systems
- High coverage

<b>Colour</b>	Black
---------------	-------

<b>Coverage</b>	6m <sup>2</sup> per litre
-----------------	---------------------------

<b>Codes</b>	20L: 11171
--------------	------------



# ARDEX BITUMINOUS SEALANT

ONE-COMPONENT  
BITUMEN-BASED SEALANT



ARDEX Bituminous Sealant is a one-component sealant with bitumen-based solvents, used for gluing, sealing and repairing bituminous membranes.

- Good primerless adhesion
- Easy to use
- UV stable

## Typical use

- External
- Roofing
- Sealing membrane edges
- Between old bitumen membranes

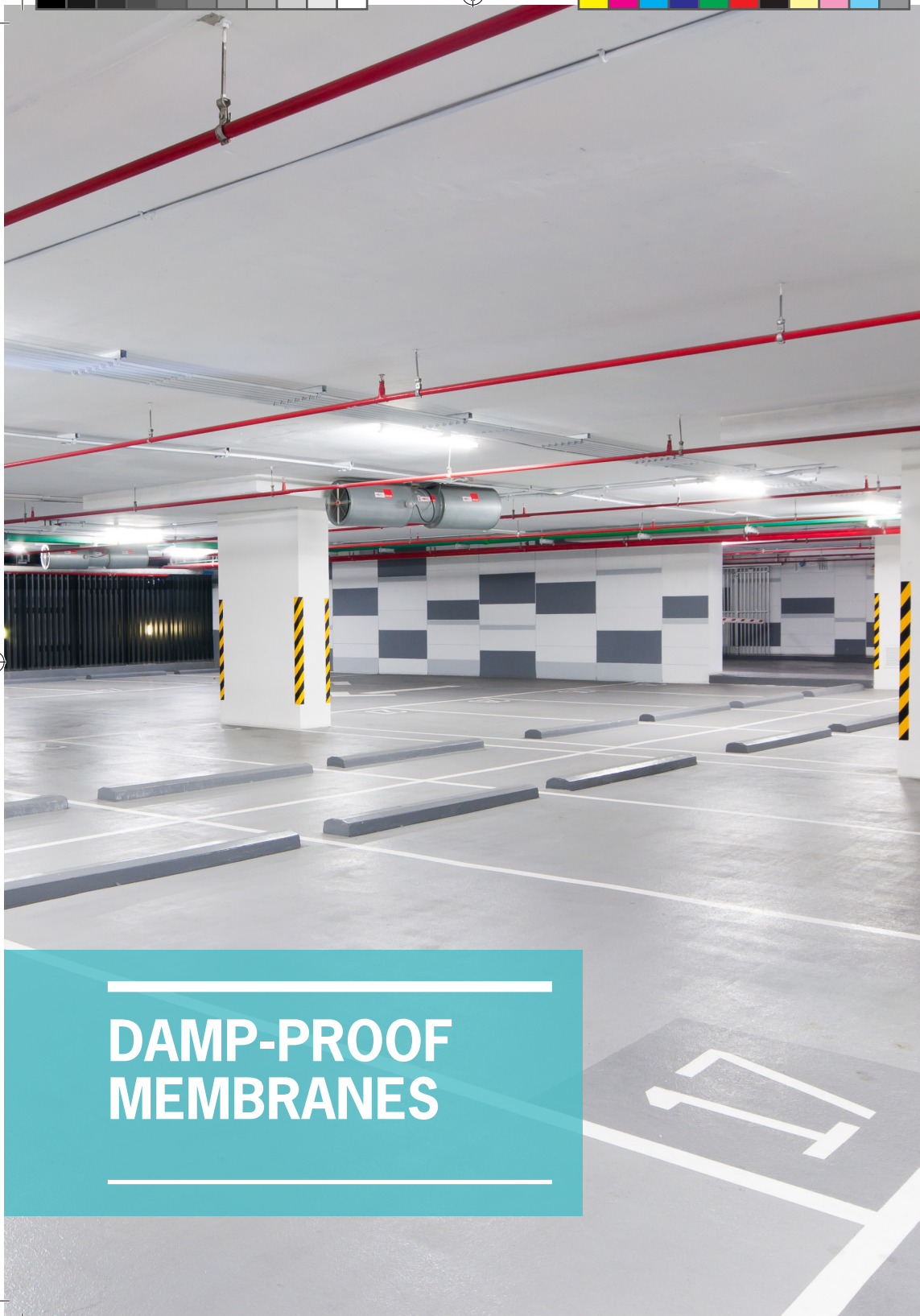
## Substrates

- Tin
- Aluminium
- Copper
- Brass
- Ceramic
- Bitumen
- Concrete
- Plaster
- Roof tiles

**Colour** Black

**Size** 300ml

**Code** 25432



# DAMP-PROOF MEMBRANES





## ARDEX WPM 3000X

**SELF-ADHESIVE  
BITUMINOUS MEMBRANE**



ARDEX WPM 3000X is a peel-and-stick, SBS rubber modified bituminous membrane with a polyethelene film top-coating for damp-proofing underground structures.

- Cold application
- Self-seals on contact with substrate
- Radon and methane barrier

### Typical use

- Below-ground applications
- Foundations
- Retaining walls
- Balconies
- Planter boxes
- Decks under cement screeds

### Substrates

- Concrete render and screeds
- Fibre cement sheets
- Structural or marine plywood
- Polystyrene blocks

**Gauge** 1.5mm

**Dimensions** 20m x 1m (20m<sup>2</sup>)

**Code** 10543

## ARDEX WPM 5000HD

**INDUSTRIAL-STRENGTH,  
SELF-ADHESIVE  
BITUMINOUS MEMBRANE**



ARDEX WPM 5000HD is an industrial-strength, self-adhesive bituminous membrane, reinforced with polypropylene mesh.

- High mechanical characteristics
- Radon and methane gas barrier
- Self-healing

### Typical use

- Below-ground applications
- Underground structures
- Trafficable structures covered with asphalt
- Expansion joints
- Underneath clay tiles or asphalt shingles

### Substrates

- Concrete render and screeds
- Fibre cement sheets
- Structural or marine plywood
- Polystyrene blocks

**Gauge** 1.5mm

**Dimensions** 20m x 1m (20m<sup>2</sup>)

**Code** 10544



## ARDEX DRS 10 GC

### DRAINAGE PROTECTION MEMBRANE



ARDEX DRS 10 GC is a cusped HDPE sheet with a geotextile layer that provides effective drainage and protection against backfill.

- Effective drainage of sub-surface water
- Excellent compressive strength
- 100% recycled material

#### Typical use

- Below-grade applications
- Basement foundations
- Retaining walls
- Planter boxes
- Bridge abutments
- Green roofs

**Thickness** 10mm

**Dimensions** 20m x 2m (40m<sup>2</sup>)

**Code** 32142

## ARDEX BITUMINOUS SEALANT

### ONE-COMPONENT BITUMEN-BASED SEALANT



ARDEX Bituminous Sealant is a one-component sealant with bitumen-based solvents, used for gluing, sealing and repairing bituminous membranes.

- Good primerless adhesion
- Easy to use
- UV stable

#### Typical use

- External
- Roofing
- Sealing membrane edges
- Between old bitumen membranes

#### Substrates

- Tin
- Aluminium
- Copper
- Brass
- Ceramic
- Bitumen
- Concrete
- Plaster
- Roof tiles

**Colour** Black

**Size** 300ml

**Code** 25432





## ARDEX WPM 240

### SOLVENT-BASED BITUMEN PRIMER



ARDEX WPM 240 is a solvent-based primer used to seal and prepare substrates prior to installing ARDEX bituminous membranes.

- Solvent-based
- For use with ARDEX bitumen systems
- Fast drying

<b>Coverage</b>	5m <sup>2</sup> per litre dependent on substrate
-----------------	---

<b>Codes</b>	20L Black: 10534 20L Clear: 30626
--------------	--------------------------------------

## ARDEX WPM 247

### WATER-BASED BITUMEN PRIMER



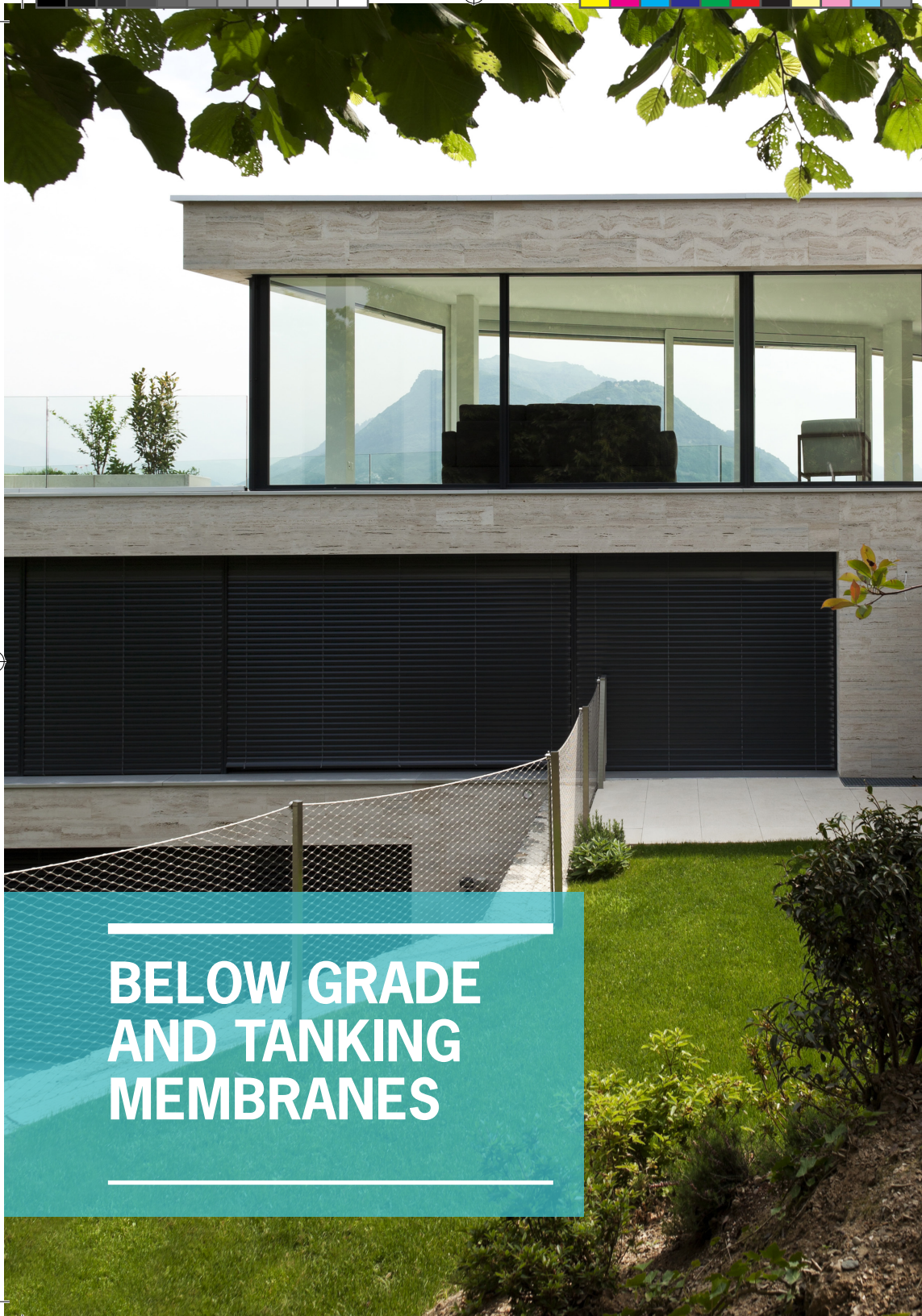
ARDEX WPM 247 is a water-based primer used to seal and prepare substrates prior to installing ARDEX bituminous membranes.

- Water-based
- For use with ARDEX bitumen systems
- High coverage

<b>Colour</b>	Black
---------------	-------

<b>Coverage</b>	6m <sup>2</sup> per litre
-----------------	---------------------------

<b>Codes</b>	20L: 11171
--------------	------------



# BELOW GRADE AND TANKING MEMBRANES





## ARDEX WPM 179

### LIQUID RUBBER WATERPROOFING MEMBRANE



ARDEX WPM 179 is a one-component, latex modified, bituminous elastomeric liquid waterproofing membrane used for patching or repairs.

- Quick drying
- Contains root inhibitors
- Excellent chemical resistance

#### Typical use

- Below-grade
- Tanking

#### Substrates

- Masonry
- Concrete
- Steel
- Sand cement screeds
- Renders

#### Colours

- Black

#### Coverage

As a patch repair membrane: approx. 15m<sup>2</sup>

As a waterproofing membrane: 8m<sup>2</sup>

**Code** 15L: 12981

## ARDEX WPM 195

### BITUMINOUS TANKING MEMBRANE



ARDEX WPM 195 is a high-performance SBS modified bituminous membrane with added elastoplastomeric polymers.

- Excellent cold flexibility
- Strong adhesive strength
- Positive vapour barrier

#### Typical use

- Below-grade
- Tanking

#### Substrates

- Concrete

**Gauge** 4mm

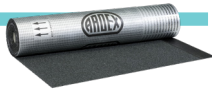
**Dimensions** 8m x 1m (8m<sup>2</sup>)

**Code** 25075



## ARDEX WPM 196

MINERAL-COATED BITUMINOUS  
TANKING MEMBRANE



ARDEX WPM 196 is a SBS modified bituminous membrane, with excellent strength and dimensional stability.

- Positive vapour barrier
- Proven performance in cold regions
- Accommodates structural movements

### Typical use

- Below-grade
- Tanking

**Gauge** 4mm

**Dimensions** 8m x 1m (8m<sup>2</sup>)

**Code** 26034

## ARDEX WPM 1000 RR

WELDTEC™ ROOT REPELL



ARDEX WPM 1000 RR is a high-performance, heat-weldable membrane designed for areas exposed to soil and plants.

- Contains a premium root inhibitor
- WeldTec™ technology for strong laps and detailing
- Excellent chemical resistance properties

### Typical use

- Green roofs
- Retaining walls
- Planter boxes
- Anywhere susceptible to roots causing damage

### Substrates

- Concrete
- Plywood
- Modified bitumen
- Malthoid
- ARDEX Polyiso or HD Cover Board
- Orientated strandboard
- CFC sheet
- Timber
- Galvanised metal
- Zinalume
- Polyurethane foam

**Gauge** 1mm

**Dimensions** 20m x 1.4m (28m<sup>2</sup>)

**Code** 24578



## ARDEX WPM 1500

### WELDTEC™ TANKING MEMBRANE



ARDEX WPM 1500 is a pre-applied, fleece-lined, weldable waterproofing membrane for below ground tanking and gas barrier applications.

- WeldTec™ technology for strong laps and detailing
- Natural gas barrier
- High elongation

#### Typical use

- Below-grade
- Tanking
- Outside building sub-structures

#### Substrates

- Concrete
- Plywood
- Modified bitumen
- Malthoid
- ARDEX Polyiso or HD Cover Board
- Orientated strandboard
- CFC sheet
- Timber
- Galvanised metal
- Zincalume
- Polyurethane foam
- Shot crete

**Gauge** 1.5mm

**Dimensions** 20m x 1.4m (28m<sup>2</sup>)

**Code** 19807

## ARDEX DRS 10 GC

### DRAINAGE PROTECTION MEMBRANE



ARDEX DRS 10 GC is a cusped HDPE sheet with a geotextile layer that provides effective drainage and protection against backfill.

- Effective drainage of sub-surface water
- Excellent compressive strength
- 100% recycled material

#### Typical use

- Below-grade applications
- Basement foundations
- Retaining walls
- Planter boxes
- Bridge abutments

**Thickness** 10mm

**Dimensions** 20m x 2m (40m<sup>2</sup>)

**Code** 32142





# ARDEX WPM 1955



## HYDROPHILIC RUBBER JOINT FOR MARINE SITUATIONS

ARDEX WPM 1955 is a hydrophilic, swelling, polymeric rubber joint for use in areas of fresh, brackish, saline or briny salt water.

- Solves construction detailing problems
- Unaffected by long-term wet-dry cycles
- Designed specifically for all environments

### Typical use

- Salt water and fresh water
- Marine applications

### Substrates

- Concrete

**Gauge** 10mm

**Dimensions** 8m x 20mm

**Code** 30146







---

# WELDTEC™ UNDERTILE MEMBRANES

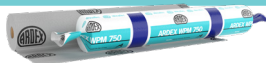
---





## ARDEX WPM 750

**WELDTEC™ INTERNAL  
UNDERTILE WATERPROOFING  
MEMBRANE**



ARDEX WPM 750 is a fleece-lined waterproofing sheet membrane specially formulated for the direct adhesion of internal tiled surfaces.

- WeldTec™ technology for strong laps and detailing
- Fleece-lined for better adhesion
- Excellent flexibility

### Typical use

- Internal
- Undertile

### Substrates

- Concrete
- Plywood
- CFC sheet
- Timber
- Polyurethane foam
- Plasterboard

**Gauge** 0.75mm

**Dimensions** 20m x 1.4m (28m<sup>2</sup>)

**Code** 13319

## ARDEX WPM 1000

**WELDTEC™ EXTERNAL  
UNDERTILE WATERPROOFING  
MEMBRANE**



ARDEX WPM 1000 is a fleece-lined waterproofing sheet membrane designed to be used on direct adhesion of tiled systems externally or for other non-exposed use.

- WeldTec™ technology for strong laps and detailing
- Fleece-lined for better adhesion
- Excellent flexibility

### Typical use

- External
- Undertile

### Substrates

- Concrete
- Plywood
- CFC sheet
- Timber
- Polyurethane foam
- Plasterboard

**Gauge** 1.2mm

**Dimensions** 20m x 1.4m (28m<sup>2</sup>)

**Code** 16475





## ARDEX WA 98 A

### WATERPROOFING MEMBRANE ADHESIVE



ARDEX WA 98 A is a high-performance membrane contact adhesive.

- Contact adhesive
- Solvent-based
- Ideal for bonding large areas

#### Typical use

- Horizontal or vertical
- Adhering ARDEX WeldTec™ and butynol sheet membranes externally

#### Suitable membrane types

- WeldTec™
- Butynol

**Working time** 15 – 60 minutes

**Coverage** 4 – 8m<sup>2</sup> bond area per litre

**Codes**  
20L: 13052  
4L: 10870  
1L: 10869

## ARDEX WELDTec™ DETAILING



ARDEX WeldTec™ Detailing Products ensure secure waterproofing in corners and edges of ARDEX WeldTec™ undertile membranes.

- Edge detailing
- Corner detailing
- Detail tape
- Weldtec Transition strip

#### Typical use

- Internal
- Undertile

#### Substrates

- Various ARDEX Weltec membranes

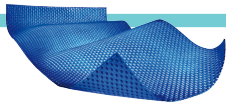
**Dimensions** Refer to [ardex.co.nz](http://ardex.co.nz) for dimensions, quantities, and colours of each product





## ARDEX UD 150

### UNDERTILE DRAINAGE MAT



ARDEX UD 150 is a thin, mesh-reinforced plastic drainage mat for use under directly adhered tiled surfaces.

- Isolates tiles surface from substrate movement
- Allows passive drainage through surface
- Reduces likelihood of efflorescence

#### Typical use

- External
- Under tiling

#### Substrates

- Concrete
- Screed
- Plywood
- CFC sheet

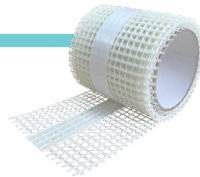
**Thickness** 9mm

**Dimensions** 1.96m x 1.02m (2m<sup>2</sup>)

**Code** 30322

## ARDEX UD 158

### SEAM REINFORCEMENT MESH FOR UD 150



ARDEX UD 158 is a mesh tape used for the reinforcement of butted joints and seams in ARDEX drainage systems such as ARDEX UD 150.

- Reduces likelihood of efflorescence
- Reinforcement for ARDEX UD 150
- Alkali-resistant mesh tape

#### Typical use

- External
- Under tiling
- Use with ARDEX UD 150

**Dimensions** 100mm x 25m

**Code** 39958



# LIQUID MEMBRANES





## ARDEX WPM 001

### ONE-COMPONENT UNDERTILE WATERPROOFING MEMBRANE



ARDEX WPM 001 is a tough, ready to use waterproofing membrane specifically designed for use under tiles. It has been uniquely formulated with synthetic microfibres to increase its strength and eliminate the need for a separate reinforcement mat.

- Single component undertile waterproofing membrane
- Fast drying one part acrylic membrane
- Fibre reinforced

#### Location

- Internal wet areas, balconies and other areas that will be tiled or protected from regular foot traffic

#### Substrates

- Concrete, renders and screeds
- Wet area compatible fibre-cement sheet, plywood and plasterboard

**Drying times** Recoat time: 1-2 hrs  
Ready to tile: 48 hrs  
Full cure: 3 days

**Coverage** Floors: 7.5m<sup>2</sup> (2 coats) D.F.T. – 1.0mm  
Walls: 15m<sup>2</sup> (2 coats) D.F.T. – 0.5mm

**Code** 10593

## ARDEX WPM 002

### TWO-PART UNDERTILE WATERPROOFING MEMBRANE



ARDEX WPM 002 is a durable, fast drying two component waterproofing membrane specifically designed for external undertile waterproofing.

- Fibre reinforced for increased strength
- Resistant to re-emulsification
- Extremely fast drying

#### Typical use

- Internal or external
- Horizontal or vertical
- Undertile

#### Substrates

- Concrete
- Renders and screeds
- Fibre cement board
- Plasterboard (internal only)
- Plywood (internal only)

**Cure time** 3 days at 23°C

**Coverage** Floors: 16m<sup>2</sup>  
Walls: 24m<sup>2</sup>

**Codes** Part A - Liquid - 20kg: 10595  
Part B - Powder - 20kg: 10597



# ARDEX WPM 155 RAPID

## FAST-DRYING POLYURETHANE UNDERTILE MEMBRANE



ARDEX WPM 155 Rapid is a water-based, polyurethane-acrylic waterproofing membrane for high-performance under-tile waterproofing.

- Extended coverage
- Extremely fast drying
- Solvent-free

### Typical use

- Commercial or residential
- Internal or external

### Substrates

- Concrete
- Renders and screeds
- Fibre cement board
- Plywood (internal only)
- Plasterboard
- CFC sheet

**Cure time** Renders and screeds: 7 days  
Concrete: 28 days

**Coverage** Refer to data sheet for applicable system

**Codes** 4L: 19728  
15L: 19727

# ARDEX WPM 300

## WATER-BASED EPOXY MEMBRANE



ARDEX WPM 300 is a two-component, epoxy polyamide membrane/barrier coating, which prevents rising damp and efflorescence.

- Adheres to damp surfaces and green concrete
- Approved for use with potable water
- Withstands hydrostatic pressure

### Typical use

- Internal or external
- Walls or floors

### Substrates

- Brick
- Masonry
- Concrete block
- Concrete
- Stone

**Cure time** 7 days

**Coverage** 1.5m<sup>2</sup> per litre

**Codes** 20L kit: 8000021  
4L kit: 10207



## ARDEX DECKWEB

WOVEN POLYESTER  
REINFORCEMENT CLOTH



ARDEX Deckweb is a reinforced cloth for use with liquid waterproofing membranes to build membrane thickness in critical areas such as cracks, movement joints and corners.

### Typical use

- Internal or external

**Dimensions** 50m x 190mm

**Code** 10293

## ARDEX ST TAPE

SELF ADHESIVE  
BUTYL TAPE



ARDEX ST Tapes are uncured, self-adhesive tapes used to reinforce critical areas and detailing when using ARDEX WPM 155 Rapid.

- High tear resistance
- Alkali resistance
- High elasticity

### Typical use

- Internal
- In conjunction with ARDEX WPM 155 Rapid

**Dimensions** STA Sheets: 2.4m x 400mm  
STB Tapes: 15m x 75mm

**Codes** STA Sheets: 19216  
STB Tapes: 16870





## ARDEX MULTIPRIME

### WATER-BASED PRIMER



ARDEX Multiprime is a water-based primer for improving adhesion of ARDEX products to various porous substrates.

- Quick drying
- Solvent-free
- Low VOC

#### Typical use

- Internal or external
- Walls and floors

#### Substrates

- Fibre cement sheet
- Plasterboard
- Concrete renders and screeds
- Masonry
- Concrete blocks
- Aerated concrete

**Drying time** 15 – 30 minutes

**Coverage** 6m<sup>2</sup> per litre

**Codes** 20L: 10155  
4L: 10156

## ARDEX P 9

### SINGLE-PART PRIMER



ARDEX P 9 Single Part Primer is a water-based primer used for improving the adhesion of ARDEX products to smooth, dense and various non-porous substrates.

- Solvent-free
- Low VOC content
- Easy to apply

#### Typical use

- Internal or external
- Walls and floors

#### Substrates

- Internal particleboard
- Plywood
- Sheet timber
- Fibre-cement sheet
- Plasterboard
- Concrete renders and screeds
- Masonry
- Aerated concrete
- Concrete blocks
- Glazed tiles

**Drying time** 20 minutes

**Coverage** 6 – 10m<sup>2</sup> per litre

**Code** 4L: 16778







# THERMAL INSULATION BOARDS





## ARDEX POLYISO INSULATION BOARD

### PIR FOAM INSULATION BOARD



The ARDEX Polyiso Insulation Board is lightweight and provides high-energy efficiency through outstanding thermal resistance.

- Excellent dimensional and compressive strength
- Easy to handle
- Does not deplete earth's ozone layer

#### Typical use

- External
- Roofing
- Under ARDEX waterproofing membranes

<b>Thickness</b>	20mm - 140mm Contact ARDEX for availability of thickness
------------------	---

<b>Coverage</b>	2.4m x 1.2m
-----------------	-------------

<b>R-Values</b>	R0.97 to R6.82 Check <a href="http://ardex.co.nz">ardex.co.nz</a> for more information
-----------------	---

#### Note:

- System drawings are available for any ARDEX membrane
- We have designed details with a vapour barrier
- Contact [specifications@ardexnz.com](mailto:specifications@ardexnz.com) for help with wind uplift calculations

## ARDEX HD COVER BOARD

### HIGH-DENSITY POLYISO COVER BOARD



ARDEX HD Cover Board is a high density, closed-cell, Polyisocyanurate foam core for use as an insulative cover board.

- Outstanding thermal performance
- Only 5kg per board
- Easy to cut and handle

#### Typical use

- External
- Roofing
- Under ARDEX waterproofing membranes

<b>Gauge</b>	12.7mm
--------------	--------

<b>Coverage</b>	2.25m x 1.22m
-----------------	---------------

<b>Code</b>	12926
-------------	-------



## INSULATION PLATES

FOR FASTENING OF ARDEX  
POLYISO BOARD



ARDEX Polyiso Insulation Plates are specifically designed for attaching insulation and cover boards to roofing substrates. These plates provide a flat and smooth finishing as a result of the recessed head in the centre of the fastener plate, which limits any risk of puncturing a waterproofing membrane from beneath. To be used with ARDEX Fasteners.

### Typical use

- External roofing
- With ARDEX thermal insulation systems
- Mechanically fastened systems

**Code** 24071

## ARDEX FASTENERS

TPO AND INSULATION  
FASTENING



ARDEX Fasteners are available as Heavy Duty Fasteners. They are specifically designed for mechanical attachment of ARDEX roofing insulation. To be used with Insulation Plates.

- 1000 pieces per pail

### Typical use

- External roofing
- With ARDEX thermal insulation systems
- Mechanically fastened systems

### Thread size

- 6.7mm

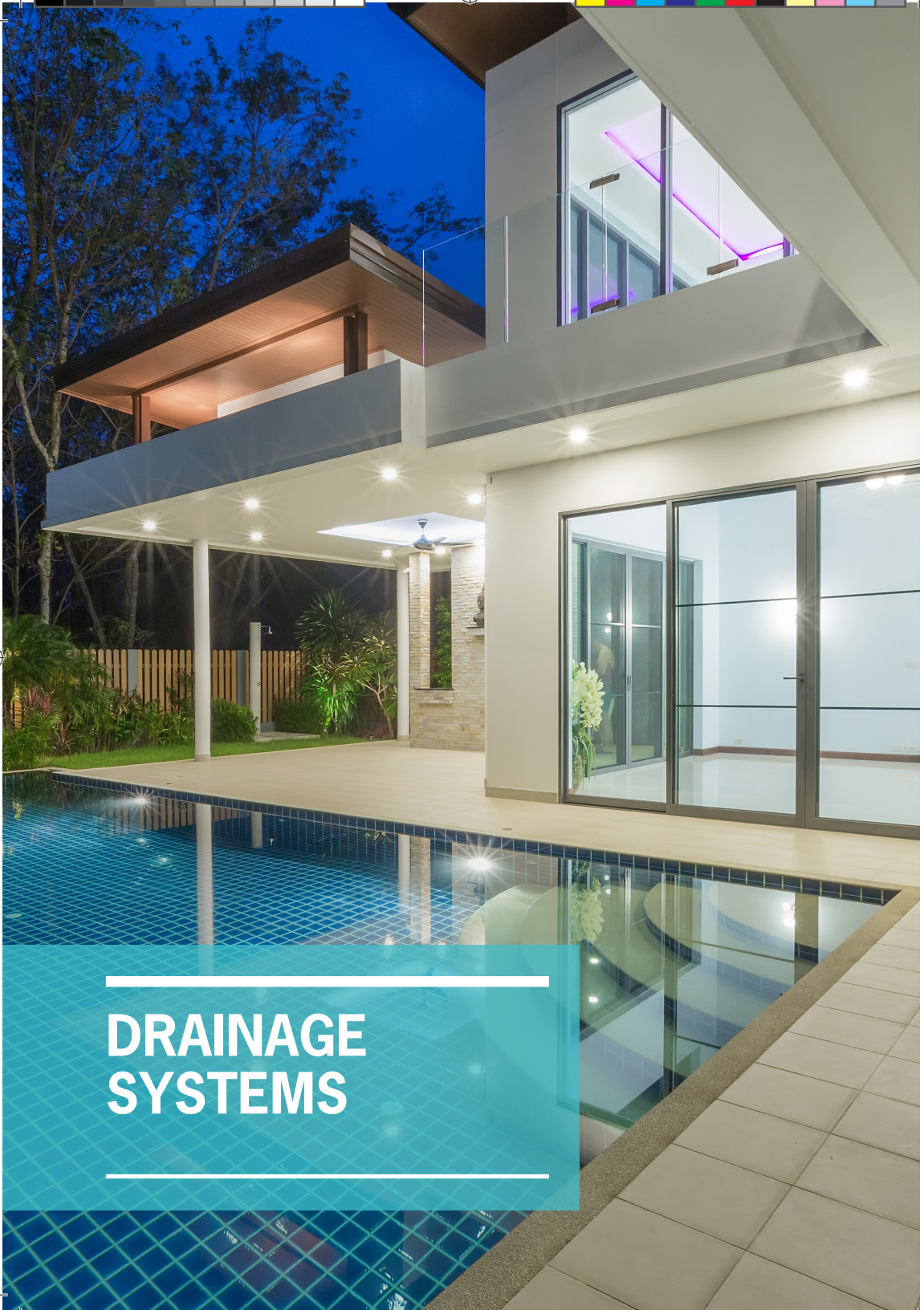
### Screw length

- Varies 32mm to 356mm









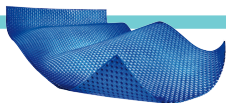
# DRAINAGE SYSTEMS





## ARDEX UD 150

### UNDERTILE DRAINAGE MAT



ARDEX UD 150 is a thin, mesh-reinforced plastic drainage mat for use under directly adhered tiled surfaces.

- Isolates tiles surface from substrate movement
- Allows passive drainage through surface
- Reduces likelihood of efflorescence

#### Typical use

- External
- Under tiling

#### Substrates

- Concrete
- Screed
- Plywood
- CFC sheet
- ARDEX single-layer sheet membranes

**Thickness** 9mm

**Dimensions** 1.96m x 1.02m (2m<sup>2</sup>)

**Code** 30322

## ARDEX DRS 10 GC

### DRAINAGE PROTECTION MEMBRANE



ARDEX DRS 10 GC is a cusped HDPE sheet with a geotextile layer that provides effective drainage and protection against backfill.

- Effective drainage of sub-surface water
- Excellent compressible strength
- 100% recycled material

#### Typical use

- Below-grade applications
- Basement foundations
- Retaining walls
- Planter boxes
- Bridge abutments

**Thickness** 10mm

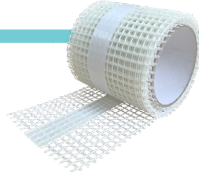
**Dimensions** 20m x 2m (40m<sup>2</sup>)

**Code** 32142



# ARDEX UD 158

## SEAM REINFORCEMENT MESH FOR UD 150



ARDEX UD 158 is a mesh tape used for the reinforcement of butted joints and seams in ARDEX drainage systems such as ARDEX UD 150.

- Reduces likelihood of efflorescence
- Reinforcement for ARDEX UD 150
- Alkali-resistant mesh tape

### Typical use

- External
- Under tiling
- Use with ARDEX UD 150

<b>Dimensions</b>	100mm x 25m
-------------------	-------------

<b>Code</b>	39958
-------------	-------











## DISCLAIMER

The technical details, recommendations and other information contained in this catalogue are given in good faith and represent the best of our knowledge and experience at the time of printing. It is your responsibility to ensure that our products are used and handled correctly, and in accordance with any applicable New Zealand Standard. Our instructions and recommendations are only for the uses they are intended.

We also reserve the right to update information without prior notice to you reflecting our ongoing research and development programme. Country specific recommendations (depending on local standards), Codes of Practice, Building Regulations or Industry Guidelines, may affect specific installation recommendations. The supply of our products and services is also subject to certain terms, warranties and exclusions, which may have already been disclosed to you in prior dealings or are otherwise available to you on request. ARDEX reserves the right to change packaging and weight of products at any time without notice due to production requirements.

© ARDEX New Zealand Ltd 2023 . All aforementioned products are the trade marks of ARDEX New Zealand Ltd, its licensors and affiliates.





This image shows a single sheet of white paper with horizontal ruling lines. The lines are evenly spaced and run across the width of the page. There is no text or other markings on the paper.





## NOTES







0800 227 339  
[ardex.co.nz](http://ardex.co.nz)

OCT 2022

