

ARDEX TANKING DRAWING LIST

DRAWING NO.	SHEET TITLE	DATE
ATT-00	DRAWING LIST	21/08/2020
ATT-01	FLUSH WALL TO FOUNDATION	21/08/2020
ATT-02	HEEL WALL TO FOUNDATION	21/08/2020
ATT-03	FOUNDATION TO SLAB MEMBRANE	21/08/2020
ATT-04	FOUNDATION TO SLAB DPM	21/08/2020
ATT-05	WALL TO SLAB MEMBRANE	21/08/2020
ATT-06	WALL TO SLAB DPM	21/08/2020
ATT-07	INTERNAL / EXTERNAL CORNER	21/08/2020
ATT-08	OVERSIZED PIPE PENETRATION	21/08/2020
ATT-09	INSITU POURED PIPE PENETRATION	21/08/2020
ATT-10	SLAB PENETRATION	21/08/2020
ATT-11	RAISED PILE	21/08/2020
ATT-12	FLUSH PILE	21/08/2020
ATT-13	CONTROL JOINT	21/08/2020
ATT-14	COLD POUR JOINT	21/08/2020
ATT-15	FGL OPTION 1	21/08/2020
ATT-16	FGL OPTION 2	21/08/2020
ATT-17	FGL OPTION 3	21/08/2020
ATT-18	FGL TERMINATION BAR	21/08/2020

ARDEX TANKING

Disclaimer: Ardex makes every reasonable effort to ensure that the technical details, recommendations and other information contained in this drawing are accurate and represent our knowledge and experience at the time of design and publication. Ardex reserves the right to change the information without prior notice. Ardex provides the information in good faith with no representations or warranties (whether implied or otherwise), and will not be liable for any losses or damages (whether direct, indirect or consequential) whatsoever, whether in contract, negligence or any other action, arising out of or in connection with the use, or inability to use, the information.

It is your responsibility to ensure that our products are used only for the purposes for which they are intended and are used in accordance with any applicable specifications, guidelines, standards, codes of practice, regulations and laws. The supply of our products and services are also subject to certain terms, warranties and exclusions which are available on request.

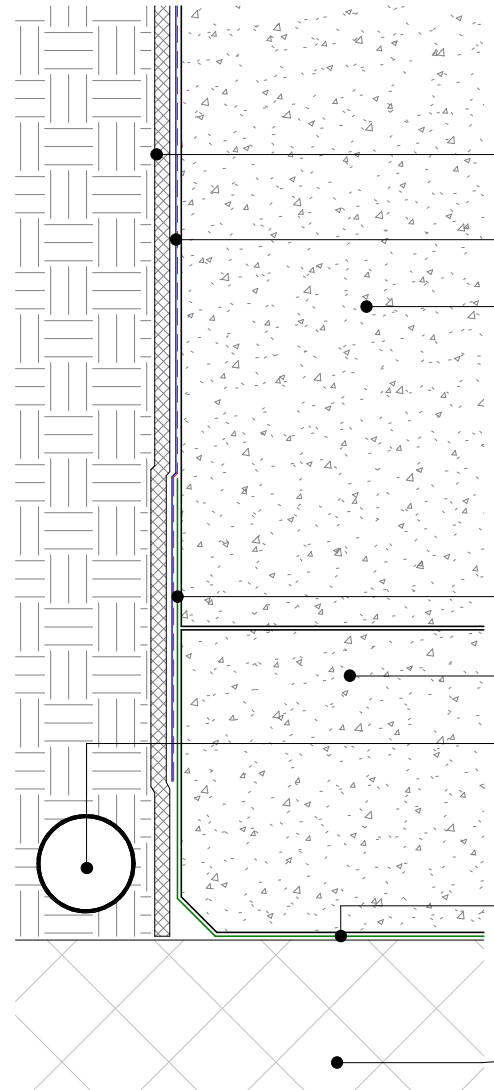
DRAWING LIST
SHEET TITLE

DWG NO.	ATT-00
DATE	21/08/2020
SCALE	NOT TO SCALE



*Drainage coil omitted in hydrostatic situations

100
100



ARDEX DRS 10 GC drainage, high density insulation or combination with ARDEX DRS 10 GC installed over HD insulation

ARDEX WPM 195 applied over ARDEX WPM 240 or ARDEX WPM 247 primer

Concrete wall

ARDEX WPM 196 membrane loose laid with torched laps and mineral chip facing concrete pour

Concrete slab

Drainage coil (to be omitted in hydrostatic situations)

ARDEX WPM 196 membrane loose laid with torched laps and mineral chip facing upwards

Site concrete, high density insulation, sand blinding or mud slab approved substrates

ARDEX TANKING

FLUSH WALL TO FOUNDATION

SHEET TITLE

DWG NO. **ATT-01**

DATE 21/08/2020

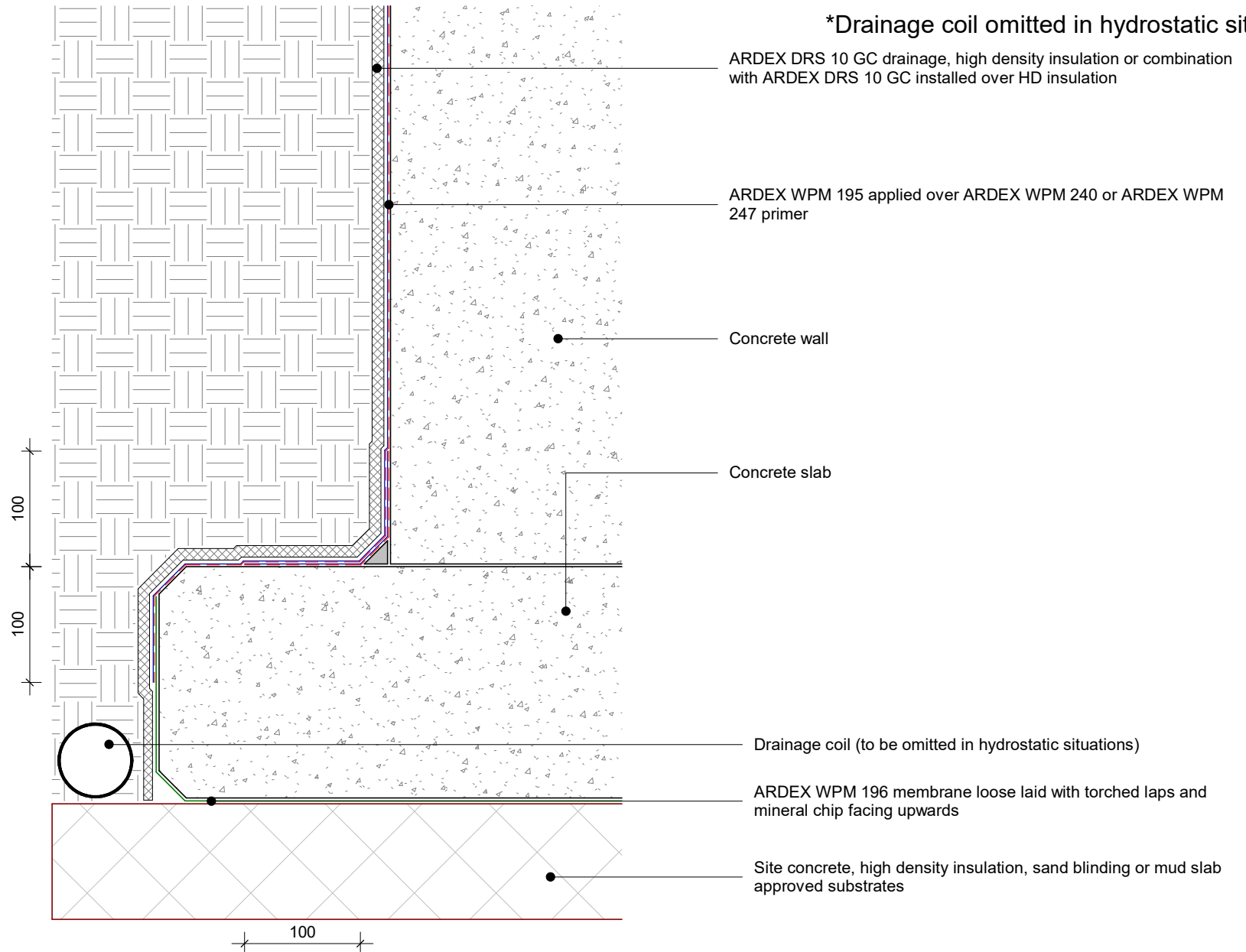
SCALE As indicated



Disclaimer: Ardex makes every reasonable effort to ensure that the technical details, recommendations and other information contained in this drawing are accurate and represent our knowledge and experience at the time of design and publication. Ardex reserves the right to change the information without prior notice. Ardex provides the information in good faith with no representations or warranties (whether implied or otherwise), and will not be liable for any losses or damages (whether direct, indirect or consequential) whatsoever, whether in contract, negligence or any other action, arising out of or in connection with the use, or inability to use, the information.

It is your responsibility to ensure that our products are used only for the purposes for which they are intended and are used in accordance with any applicable specifications, guidelines, standards, codes of practice, regulations and laws. The supply of our products and services are also subject to certain terms, warranties and exclusions which are available on request.

*Drainage coil omitted in hydrostatic situations



ARDEX TANKING

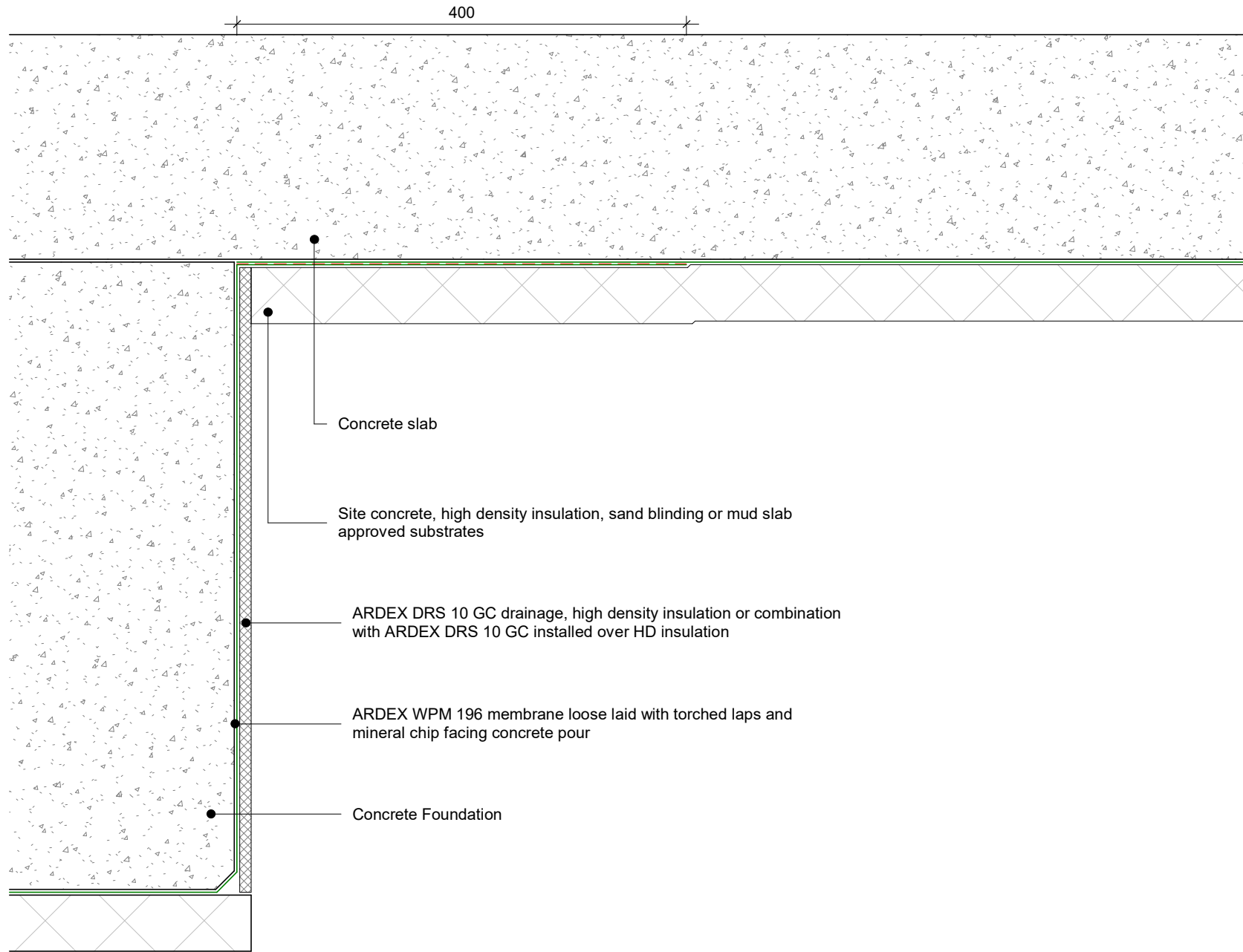
HEEL WALL TO FOUNDATION
SHEET TITLE

DWG NO. **ATT-02**
DATE 21/08/2020
SCALE As indicated



Disclaimer: Ardex makes every reasonable effort to ensure that the technical details, recommendations and other information contained in this drawing are accurate and represent our knowledge and experience at the time of design and publication. Ardex reserves the right to change the information without prior notice. Ardex provides the information in good faith with no representations or warranties (whether implied or otherwise), and will not be liable for any losses or damages (whether direct, indirect or consequential) whatsoever, whether in contract, negligence or any other action, arising out of or in connection with the use, or inability to use, the information.

It is your responsibility to ensure that our products are used only for the purposes for which they are intended and are used in accordance with any applicable specifications, guidelines, standards, codes of practice, regulations and laws. The supply of our products and services are also subject to certain terms, warranties and exclusions which are available on request.



ARDEX TANKING

Disclaimer: Ardex makes every reasonable effort to ensure that the technical details, recommendations and other information contained in this drawing are accurate and represent our knowledge and experience at the time of design and publication. Ardex reserves the right to change the information without prior notice. Ardex provides the information in good faith with no representations or warranties (whether implied or otherwise), and will not be liable for any losses or damages (whether direct, indirect or consequential) whatsoever, whether in contract, negligence or any other action, arising out of or in connection with the use, or inability to use, the information.

It is your responsibility to ensure that our products are used only for the purposes for which they are intended and are used in accordance with any applicable specifications, guidelines, standards, codes of practice, regulations and laws. The supply of our products and services are also subject to certain terms, warranties and exclusions which are available on request.

FOUNDATION TO SLAB MEMBRANE

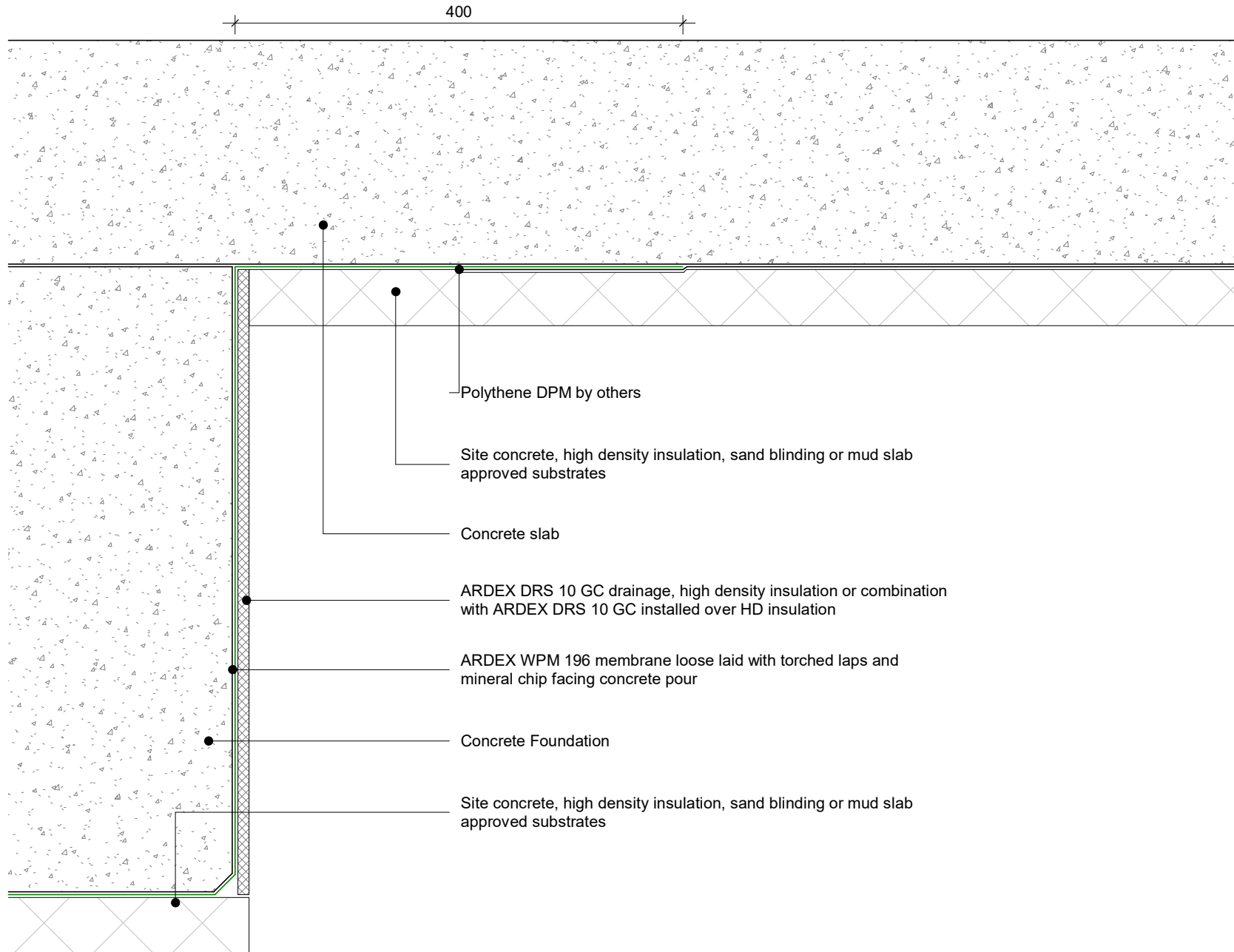
SHEET TITLE

DWG NO. **ATT-03**

DATE 21/08/2020

SCALE 1 : 5 @ A4





ARDEX TANKING

Disclaimer: Ardex makes every reasonable effort to ensure that the technical details, recommendations and other information contained in this drawing are accurate and represent our knowledge and experience at the time of design and publication. Ardex reserves the right to change the information without prior notice. Ardex provides the information in good faith with no representations or warranties (whether implied or otherwise), and will not be liable for any losses or damages (whether direct, indirect or consequential) whatsoever, whether in contract, negligence or any other action, arising out of or in connection with the use, or inability to use, the information.

It is your responsibility to ensure that our products are used only for the purposes for which they are intended and are used in accordance with any applicable specifications, guidelines, standards, codes of practice, regulations and laws. The supply of our products and services are also subject to certain terms, warranties and exclusions which are available on request.

FOUNDATION TO SLAB DPM SHEET TITLE

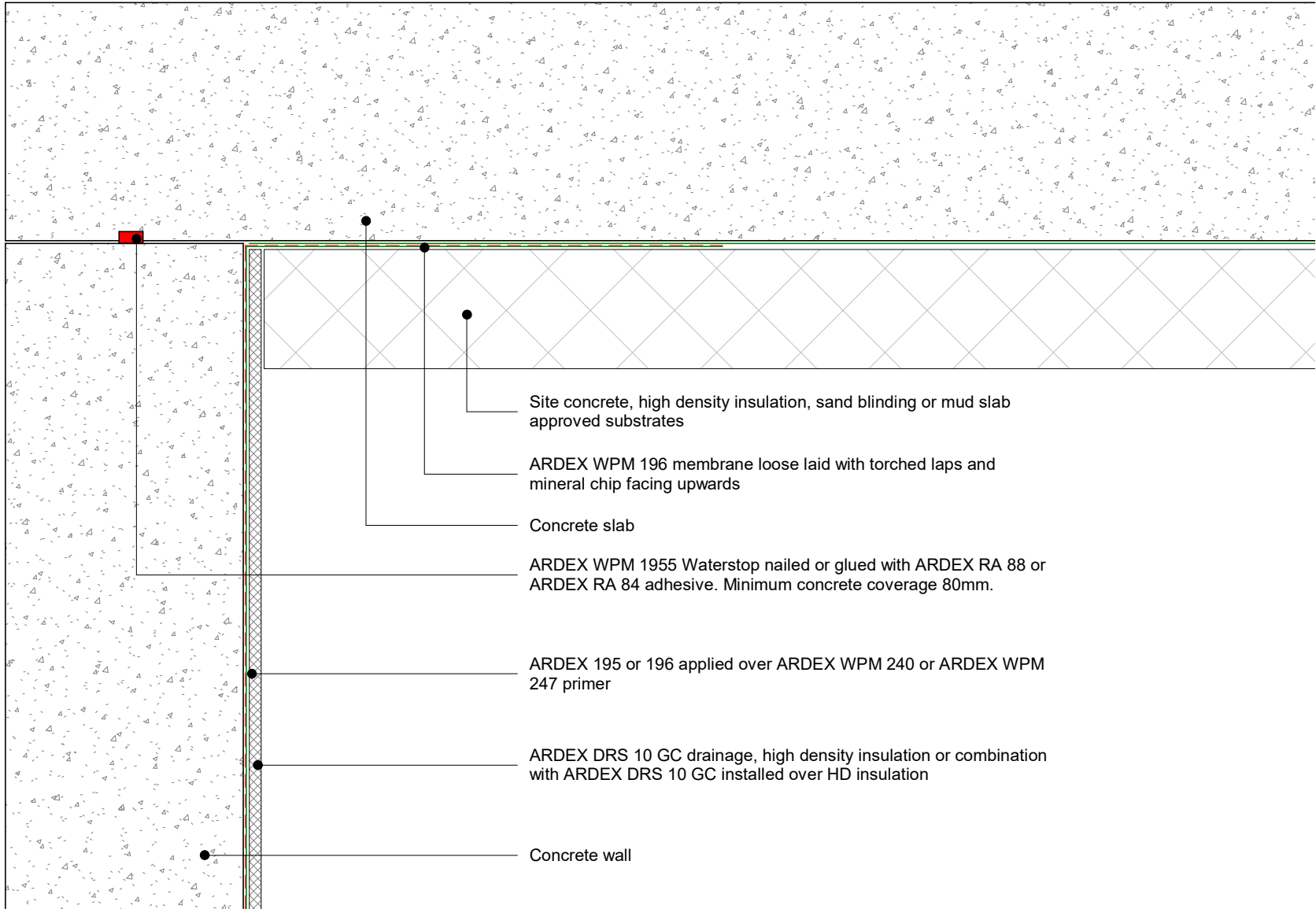
DWG NO. **ATT-04**

DATE 21/08/2020

SCALE 1 : 5 @ A4



400



Site concrete, high density insulation, sand blinding or mud slab approved substrates

ARDEX WPM 196 membrane loose laid with torched laps and mineral chip facing upwards

Concrete slab

ARDEX WPM 1955 Waterstop nailed or glued with ARDEX RA 88 or ARDEX RA 84 adhesive. Minimum concrete coverage 80mm.

ARDEX 195 or 196 applied over ARDEX WPM 240 or ARDEX WPM 247 primer

ARDEX DRS 10 GC drainage, high density insulation or combination with ARDEX DRS 10 GC installed over HD insulation

Concrete wall

ARDEX TANKING

WALL TO SLAB MEMBRANE

SHEET TITLE

DWG NO. **ATT-05**

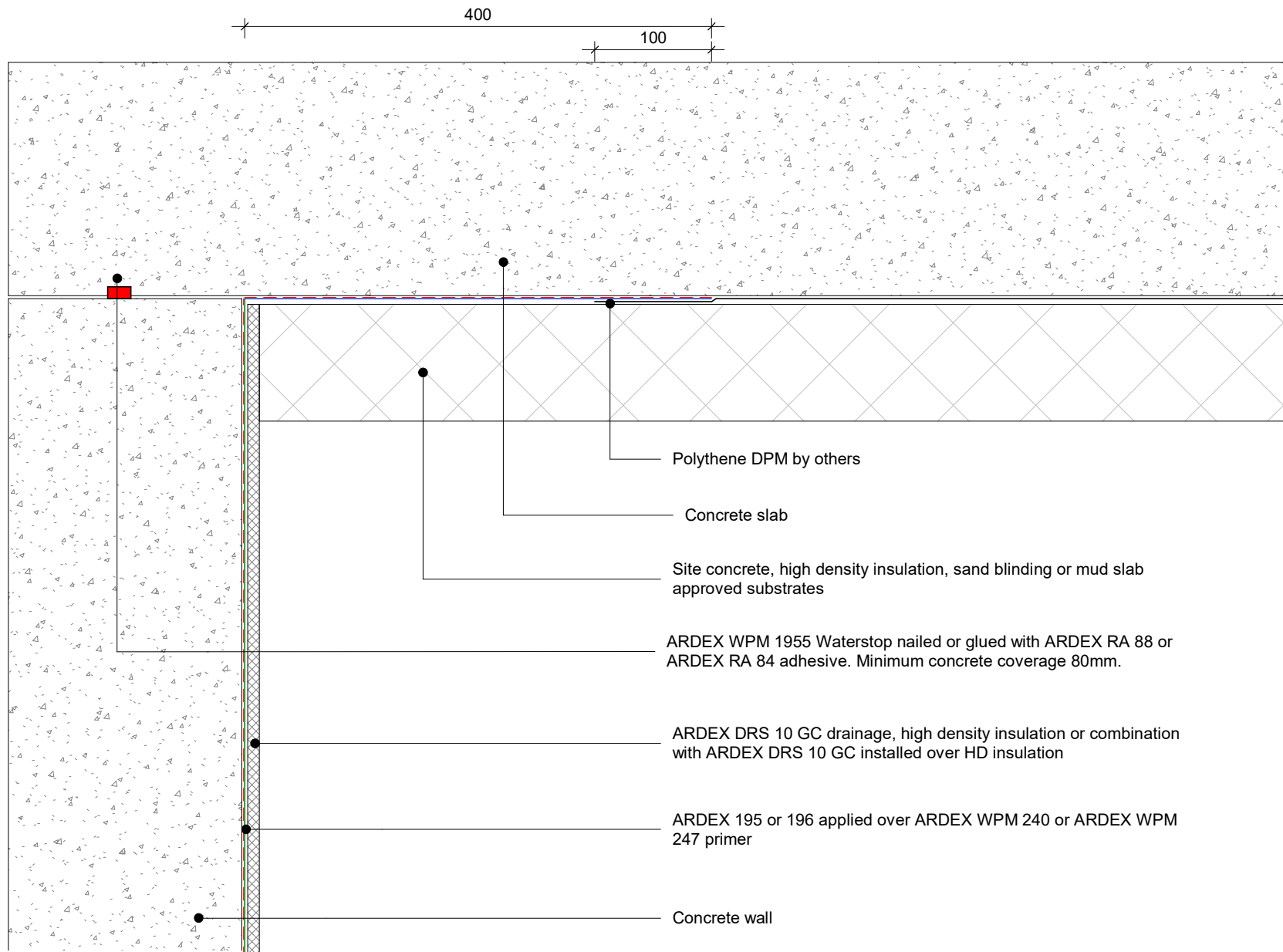
DATE 21/08/2020

SCALE 1 : 5 @ A4



Disclaimer: Ardex makes every reasonable effort to ensure that the technical details, recommendations and other information contained in this drawing are accurate and represent our knowledge and experience at the time of design and publication. Ardex reserves the right to change the information without prior notice. Ardex provides the information in good faith with no representations or warranties (whether implied or otherwise), and will not be liable for any losses or damages (whether direct, indirect or consequential) whatsoever, whether in contract, negligence or any other action, arising out of or in connection with the use, or inability to use, the information.

It is your responsibility to ensure that our products are used only for the purposes for which they are intended and are used in accordance with any applicable specifications, guidelines, standards, codes of practice, regulations and laws. The supply of our products and services are also subject to certain terms, warranties and exclusions which are available on request.



Polythene DPM by others

Concrete slab

Site concrete, high density insulation, sand blinding or mud slab approved substrates

ARDEX WPM 195 Waterstop nailed or glued with ARDEX RA 88 or ARDEX RA 84 adhesive. Minimum concrete coverage 80mm.

ARDEX DRS 10 GC drainage, high density insulation or combination with ARDEX DRS 10 GC installed over HD insulation

ARDEX 195 or 196 applied over ARDEX WPM 240 or ARDEX WPM 247 primer

Concrete wall

ARDEX TANKING

WALL TO SLAB DPM SHEET TITLE

DWG NO. **ATT-06**

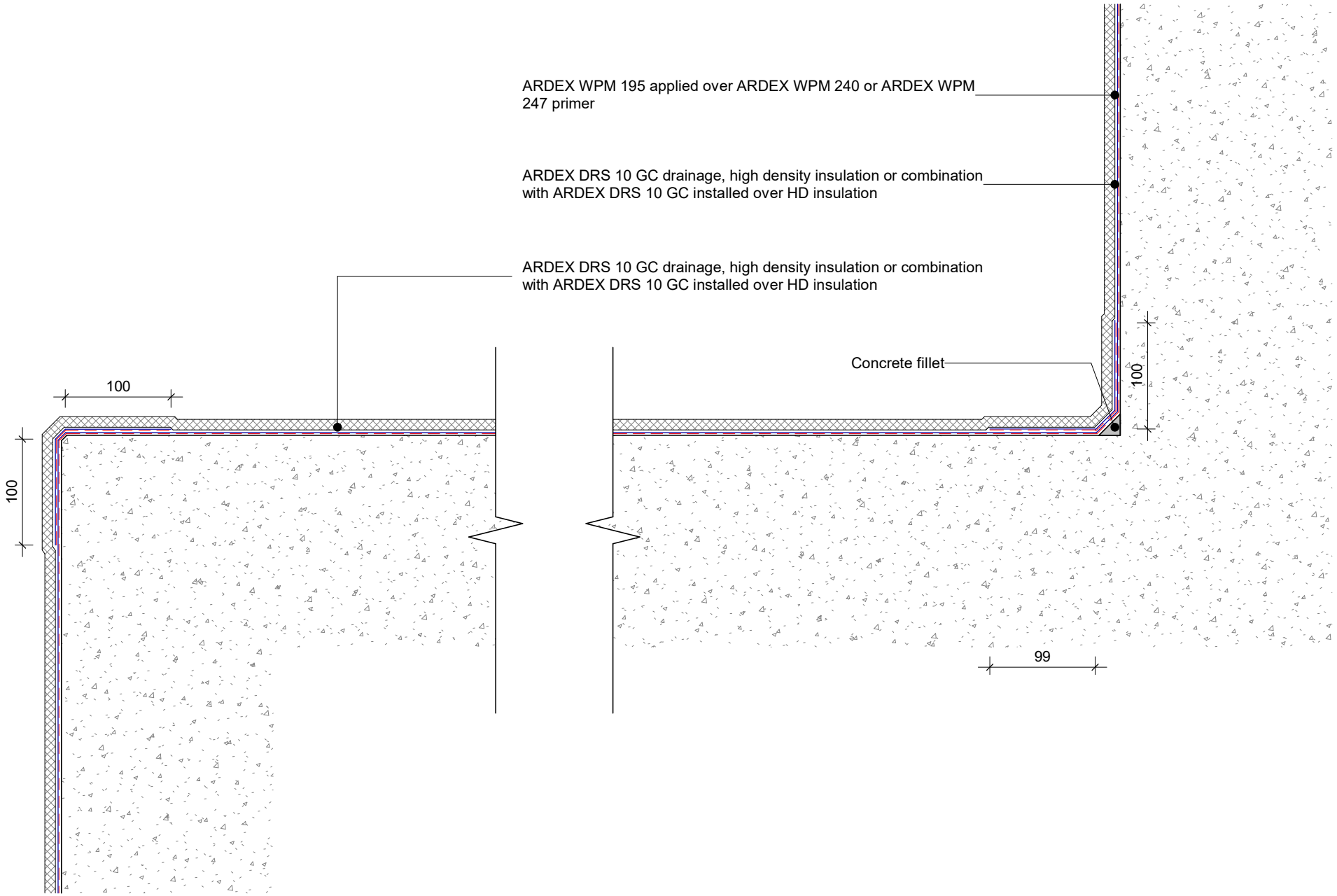
DATE 21/08/2020

SCALE 1 : 5 @ A4



Disclaimer: Ardex makes every reasonable effort to ensure that the technical details, recommendations and other information contained in this drawing are accurate and represent our knowledge and experience at the time of design and publication. Ardex reserves the right to change the information without prior notice. Ardex provides the information in good faith with no representations or warranties (whether implied or otherwise), and will not be liable for any losses or damages (whether direct, indirect or consequential) whatsoever, whether in contract, negligence or any other action, arising out of or in connection with the use, or inability to use, the information.

It is your responsibility to ensure that our products are used only for the purposes for which they are intended and are used in accordance with any applicable specifications, guidelines, standards, codes of practice, regulations and laws. The supply of our products and services are also subject to certain terms, warranties and exclusions which are available on request.



ARDEX WPM 195 applied over ARDEX WPM 240 or ARDEX WPM 247 primer

ARDEX DRS 10 GC drainage, high density insulation or combination with ARDEX DRS 10 GC installed over HD insulation

ARDEX DRS 10 GC drainage, high density insulation or combination with ARDEX DRS 10 GC installed over HD insulation

Concrete fillet

100
100

99

100

ARDEX TANKING

Disclaimer: Ardex makes every reasonable effort to ensure that the technical details, recommendations and other information contained in this drawing are accurate and represent our knowledge and experience at the time of design and publication. Ardex reserves the right to change the information without prior notice. Ardex provides the information in good faith with no representations or warranties (whether implied or otherwise), and will not be liable for any losses or damages (whether direct, indirect or consequential) whatsoever, whether in contract, negligence or any other action, arising out of or in connection with the use, or inability to use, the information.

It is your responsibility to ensure that our products are used only for the purposes for which they are intended and are used in accordance with any applicable specifications, guidelines, standards, codes of practice, regulations and laws. The supply of our products and services are also subject to certain terms, warranties and exclusions which are available on request.

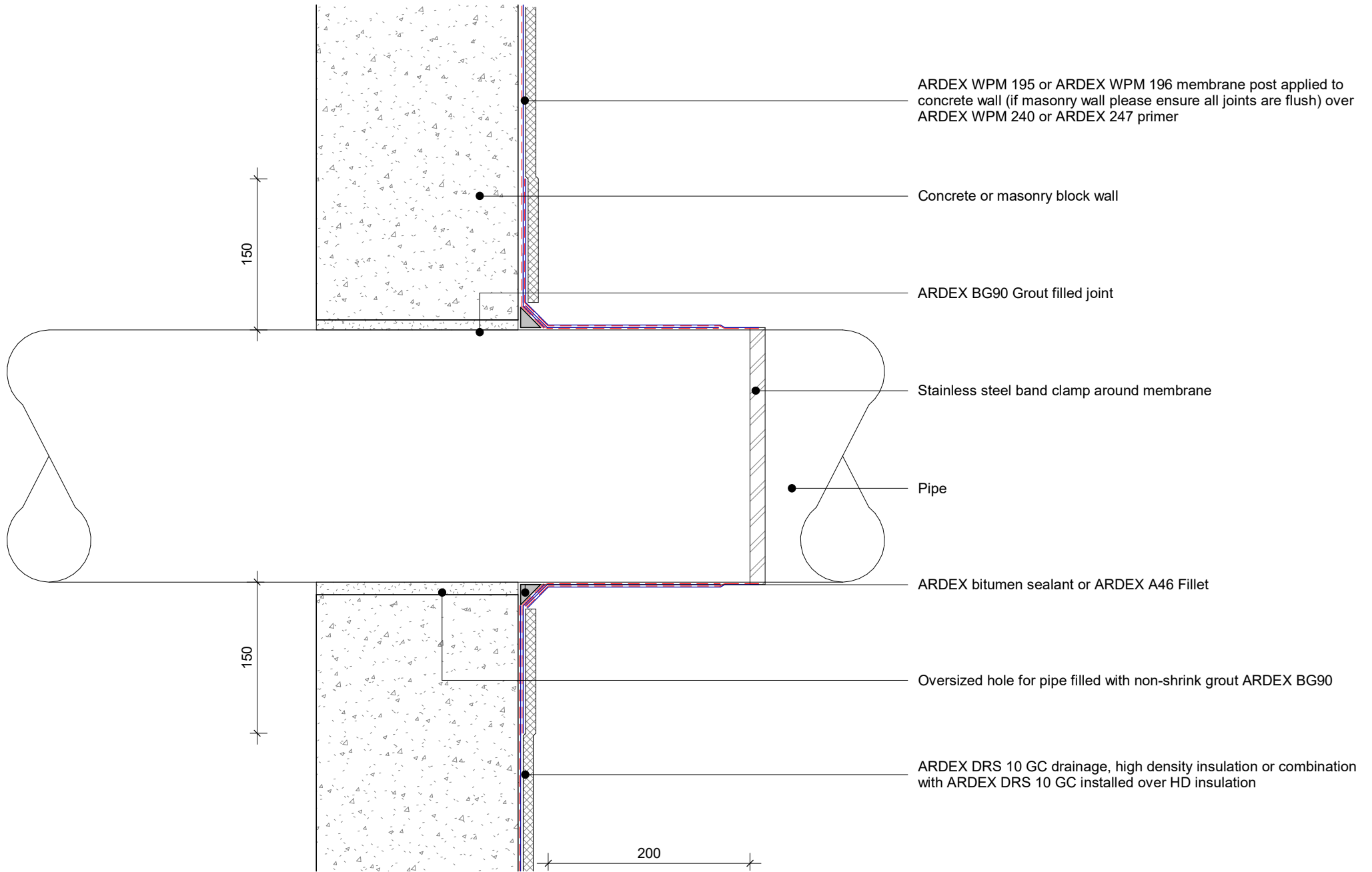
INTERNAL / EXTERNAL CORNER
SHEET TITLE

DWG NO. ATT-07

DATE 21/08/2020

SCALE 1 : 5 @ A4





ARDEX TANKING

Disclaimer: Ardex makes every reasonable effort to ensure that the technical details, recommendations and other information contained in this drawing are accurate and represent our knowledge and experience at the time of design and publication. Ardex reserves the right to change the information without prior notice. Ardex provides the information in good faith with no representations or warranties (whether implied or otherwise), and will not be liable for any losses or damages (whether direct, indirect or consequential) whatsoever, whether in contract, negligence or any other action, arising out of or in connection with the use, or inability to use, the information.

It is your responsibility to ensure that our products are used only for the purposes for which they are intended and are used in accordance with any applicable specifications, guidelines, standards, codes of practice, regulations and laws. The supply of our products and services are also subject to certain terms, warranties and exclusions which are available on request.

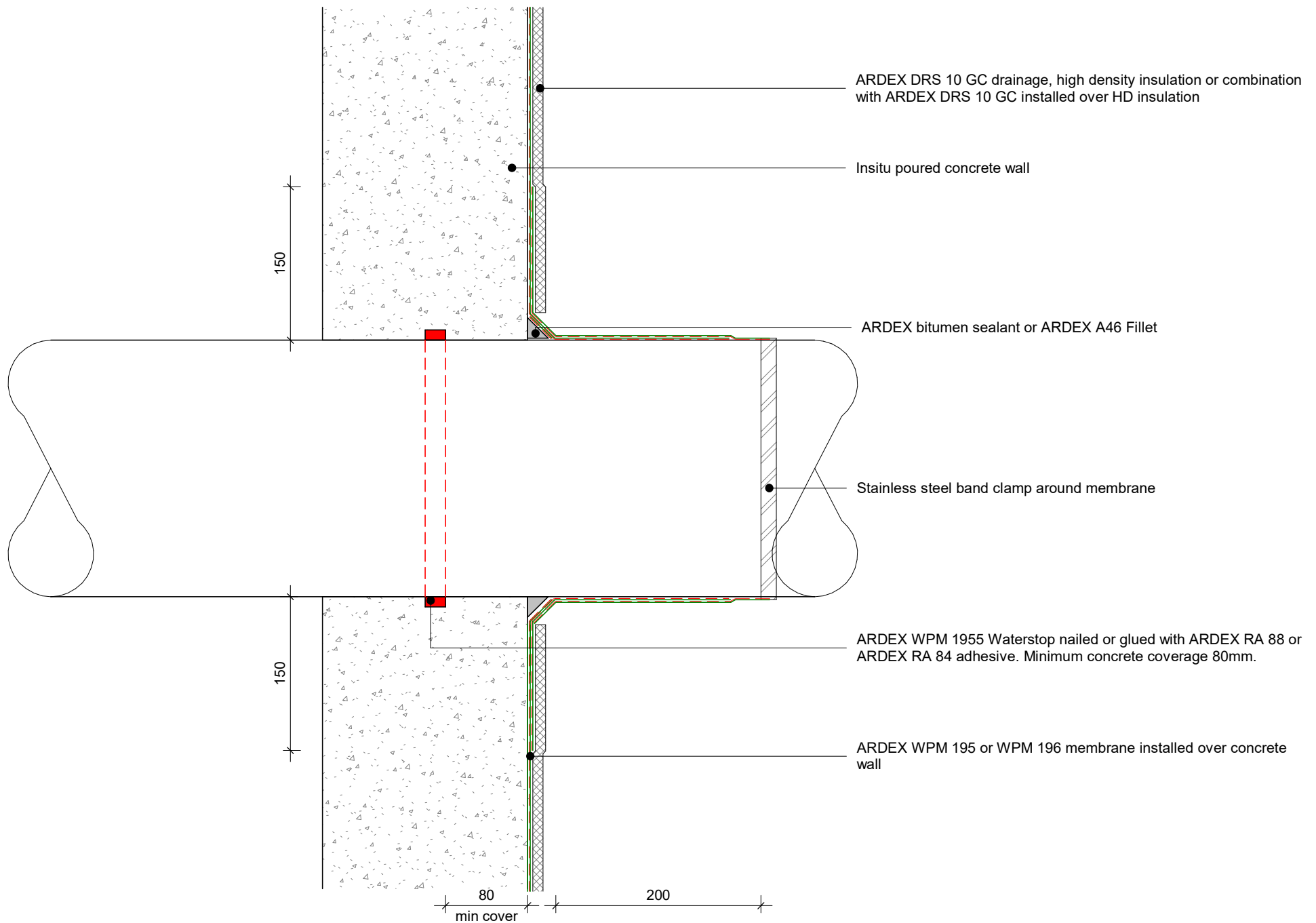
OVERSIZED PIPE PENETRATION SHEET TITLE

DWG NO. **ATT-08**

DATE 21/08/2020

SCALE 1 : 5 @ A4





ARDEX TANKING

Disclaimer: Ardex makes every reasonable effort to ensure that the technical details, recommendations and other information contained in this drawing are accurate and represent our knowledge and experience at the time of design and publication. Ardex reserves the right to change the information without prior notice. Ardex provides the information in good faith with no representations or warranties (whether implied or otherwise), and will not be liable for any losses or damages (whether direct, indirect or consequential) whatsoever, whether in contract, negligence or any other action, arising out of or in connection with the use, or inability to use, the information.

It is your responsibility to ensure that our products are used only for the purposes for which they are intended and are used in accordance with any applicable specifications, guidelines, standards, codes of practice, regulations and laws. The supply of our products and services are also subject to certain terms, warranties and exclusions which are available on request.

INSITU POURED PIPE PENETRATION

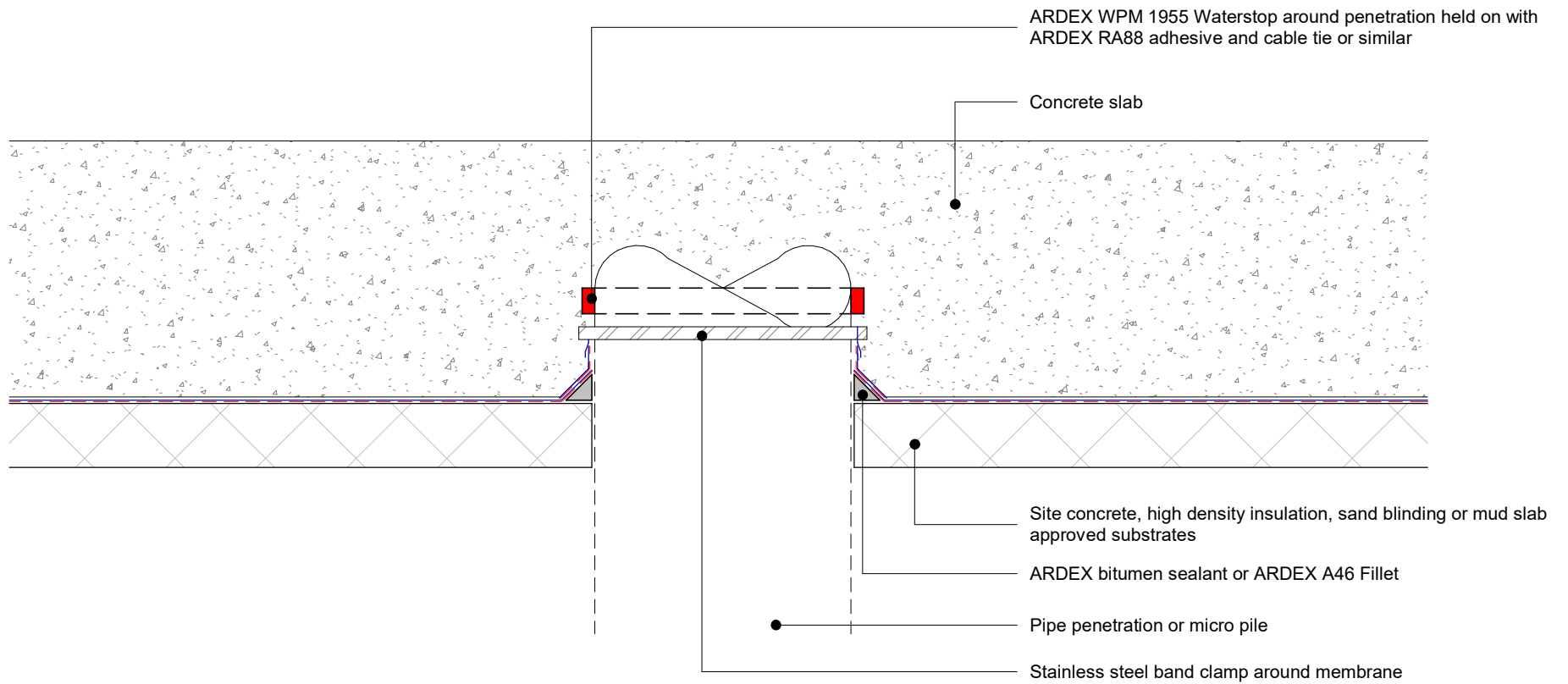
SHEET TITLE

DWG NO. **ATT-09**

DATE 21/08/2020

SCALE 1 : 5 @ A4





ARDEX TANKING

SLAB PENETRATION SHEET TITLE

DWG NO. **ATT-10**

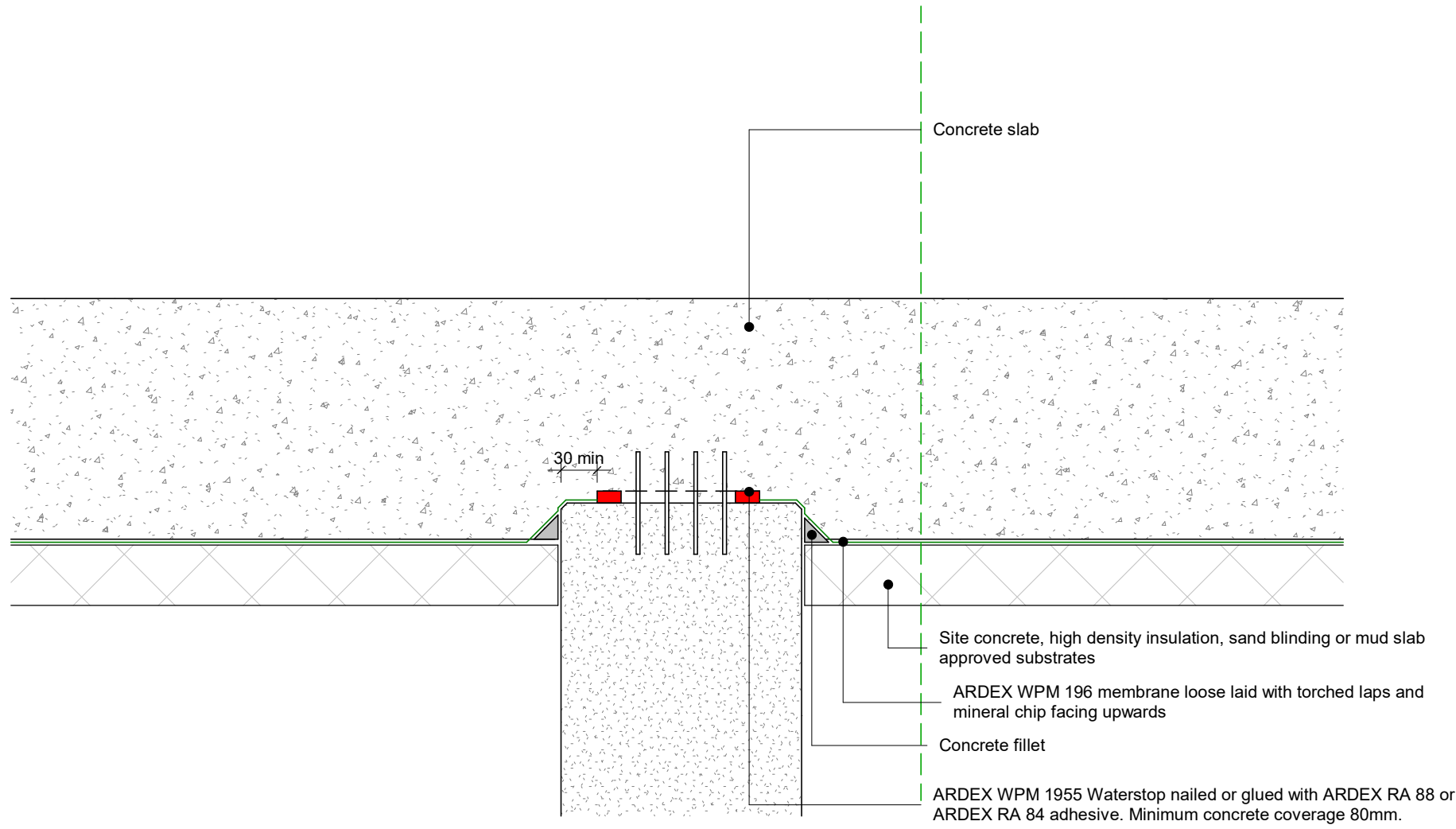
DATE 21/08/2020

SCALE 1 : 5 @ A4



Disclaimer: Ardex makes every reasonable effort to ensure that the technical details, recommendations and other information contained in this drawing are accurate and represent our knowledge and experience at the time of design and publication. Ardex reserves the right to change the information without prior notice. Ardex provides the information in good faith with no representations or warranties (whether implied or otherwise), and will not be liable for any losses or damages (whether direct, indirect or consequential) whatsoever, whether in contract, negligence or any other action, arising out of or in connection with the use, or inability to use, the information.

It is your responsibility to ensure that our products are used only for the purposes for which they are intended and are used in accordance with any applicable specifications, guidelines, standards, codes of practice, regulations and laws. The supply of our products and services are also subject to certain terms, warranties and exclusions which are available on request.



ARDEX TANKING

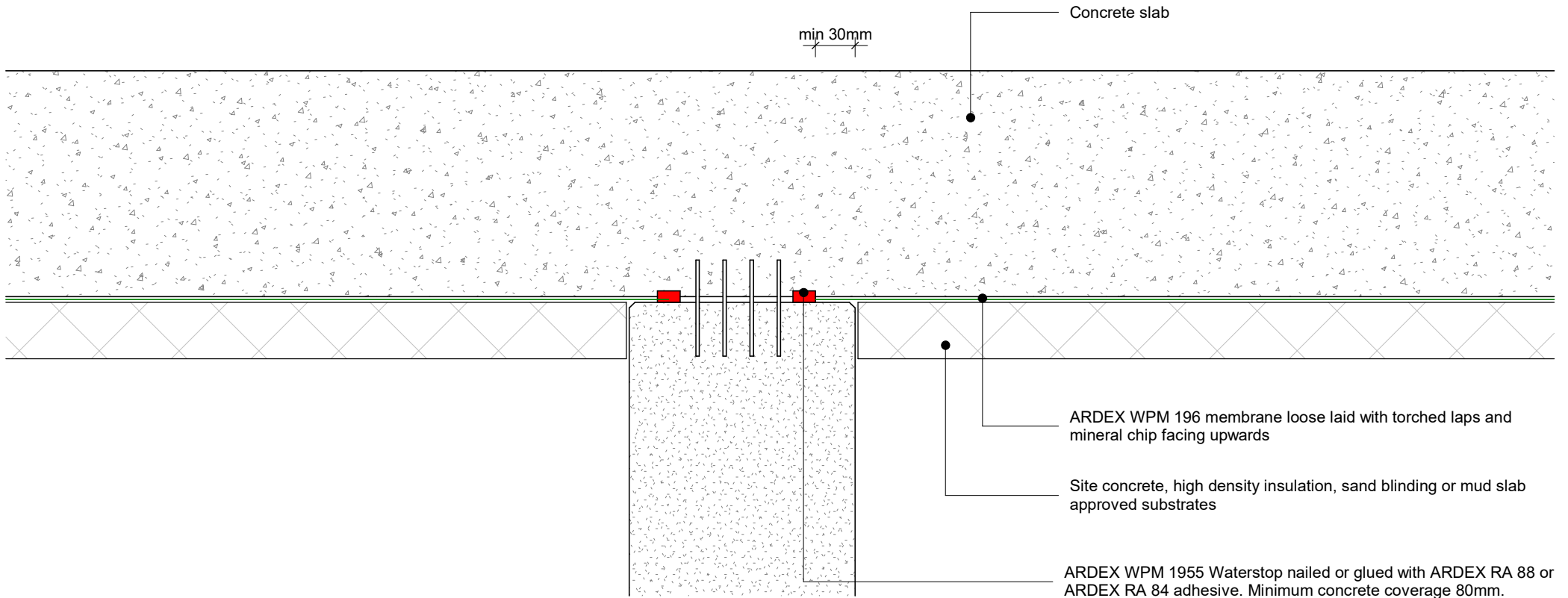
Disclaimer: Ardex makes every reasonable effort to ensure that the technical details, recommendations and other information contained in this drawing are accurate and represent our knowledge and experience at the time of design and publication. Ardex reserves the right to change the information without prior notice. Ardex provides the information in good faith with no representations or warranties (whether implied or otherwise), and will not be liable for any losses or damages (whether direct, indirect or consequential) whatsoever, whether in contract, negligence or any other action, arising out of or in connection with the use, or inability to use, the information.

It is your responsibility to ensure that our products are used only for the purposes for which they are intended and are used in accordance with any applicable specifications, guidelines, standards, codes of practice, regulations and laws. The supply of our products and services are also subject to certain terms, warranties and exclusions which are available on request.

RAISED PILE
SHEET TITLE

DWG NO. **ATT-11**
DATE 21/08/2020
SCALE 1 : 5 @ A4





ARDEX TANKING

Disclaimer: Ardex makes every reasonable effort to ensure that the technical details, recommendations and other information contained in this drawing are accurate and represent our knowledge and experience at the time of design and publication. Ardex reserves the right to change the information without prior notice. Ardex provides the information in good faith with no representations or warranties (whether implied or otherwise), and will not be liable for any losses or damages (whether direct, indirect or consequential) whatsoever, whether in contract, negligence or any other action, arising out of or in connection with the use, or inability to use, the information.

It is your responsibility to ensure that our products are used only for the purposes for which they are intended and are used in accordance with any applicable specifications, guidelines, standards, codes of practice, regulations and laws. The supply of our products and services are also subject to certain terms, warranties and exclusions which are available on request.

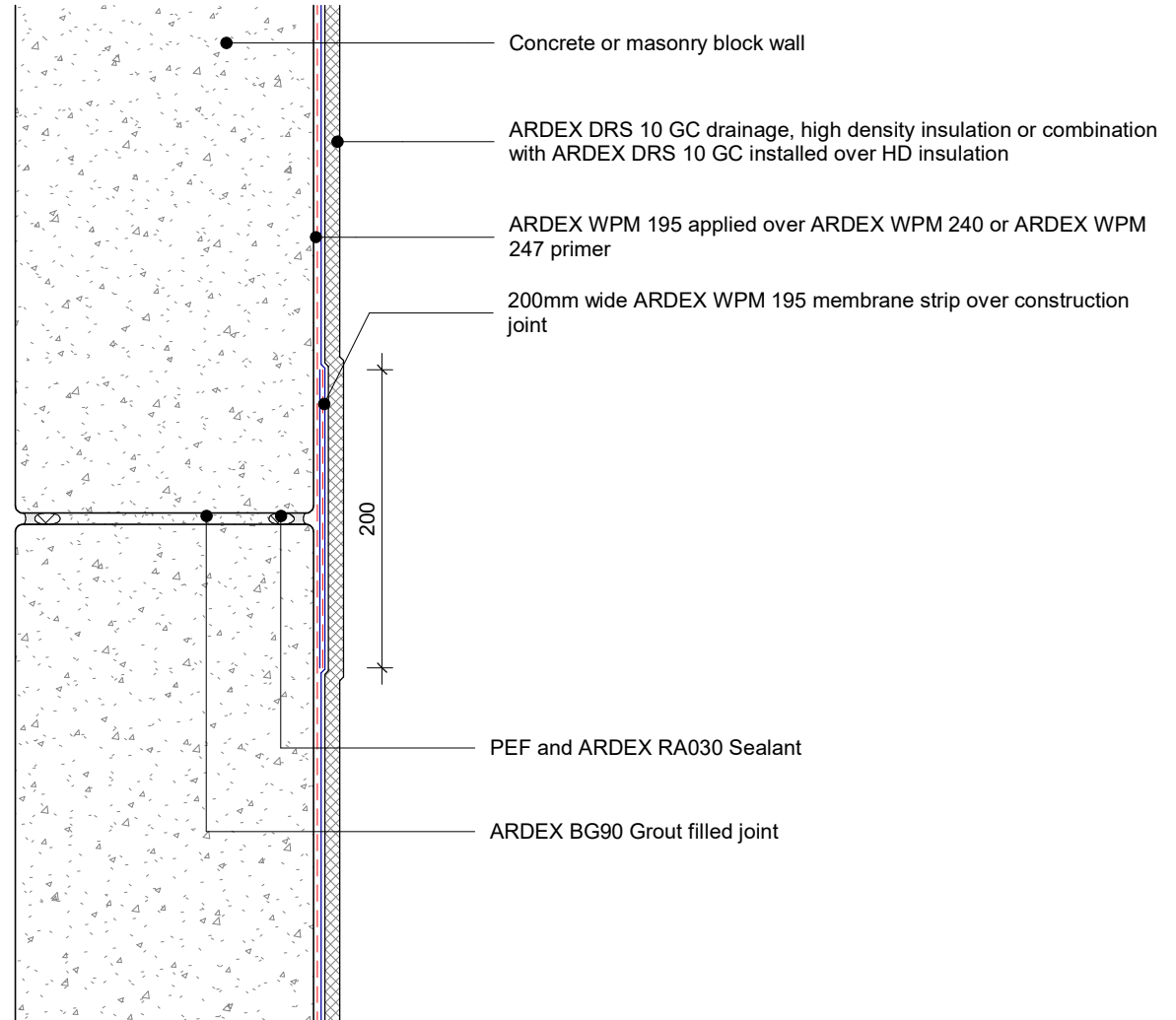
FLUSH PILE
SHEET TITLE

DWG NO. **ATT-12**

DATE 21/08/2020

SCALE 1 : 5 @ A4





ARDEX TANKING

CONTROL JOINT SHEET TITLE

DWG NO. **ATT-13**

DATE 21/08/2020

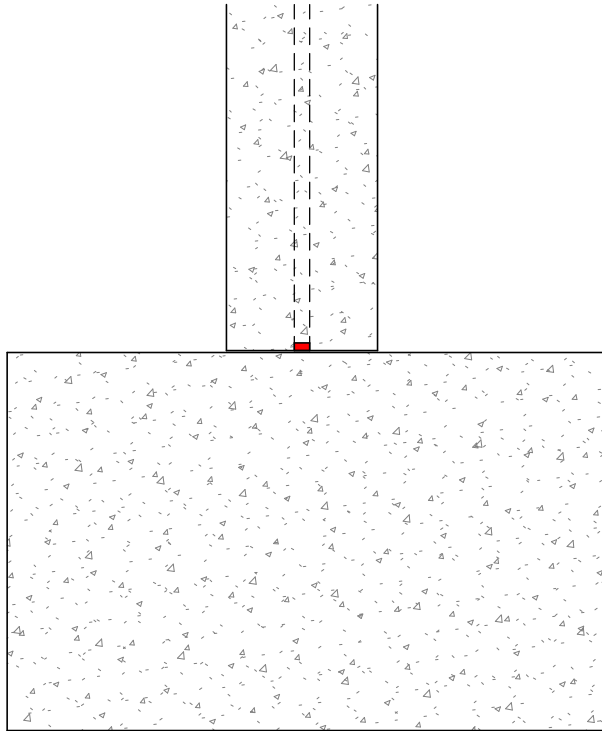
SCALE 1 : 5 @ A4



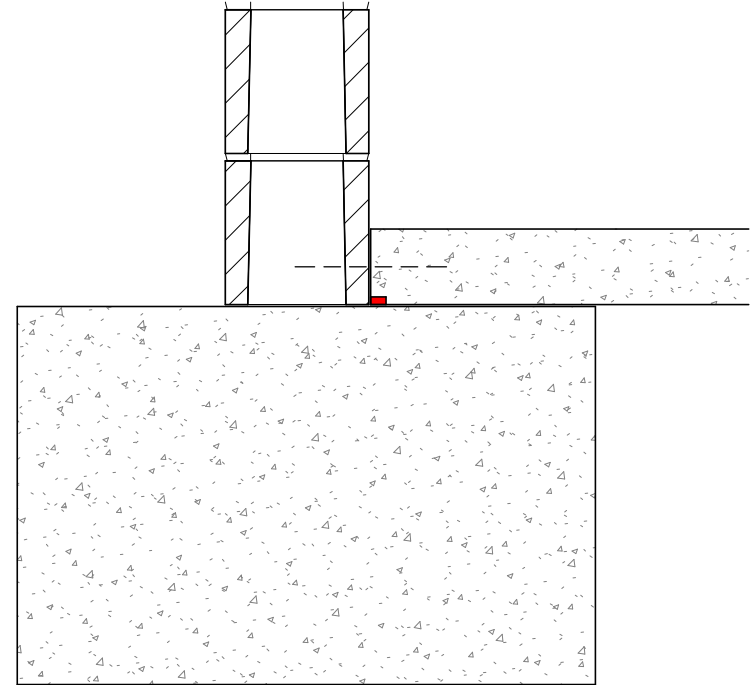
Disclaimer: Ardex makes every reasonable effort to ensure that the technical details, recommendations and other information contained in this drawing are accurate and represent our knowledge and experience at the time of design and publication. Ardex reserves the right to change the information without prior notice. Ardex provides the information in good faith with no representations or warranties (whether implied or otherwise), and will not be liable for any losses or damages (whether direct, indirect or consequential) whatsoever, whether in contract, negligence or any other action, arising out of or in connection with the use, or inability to use, the information.

It is your responsibility to ensure that our products are used only for the purposes for which they are intended and are used in accordance with any applicable specifications, guidelines, standards, codes of practice, regulations and laws. The supply of our products and services are also subject to certain terms, warranties and exclusions which are available on request.

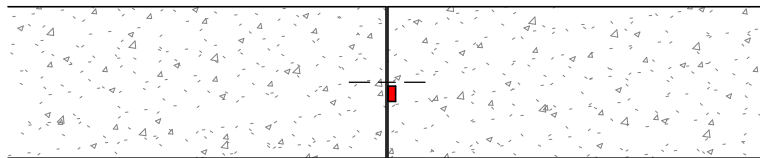
Note: Waterstop ARDEX WPM 1955 is installed into cold pour construction joints. Waterstop ARDEX WPM 1955 requires minimum 80mm of reinforced concrete coverage installed with ARDEX RA 88 or ARDEX RA 84 adhesive or concrete nails. If waterstop is over hydrated replacement is required before concrete pour.



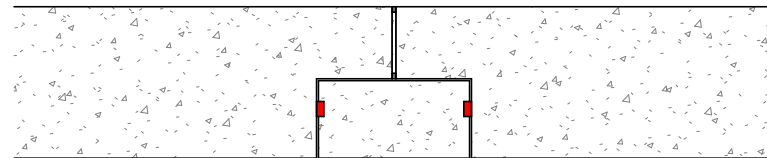
INSITU POURED WALL



PRECAST OR MASONRY
WALL TO SLAB



SLAB COLD POUR JOINT



PRECAST PANEL STITCH
JOINT

ARDEX TANKING

COLD POUR JOINT
SHEET TITLE

DWG NO. **ATT-14**

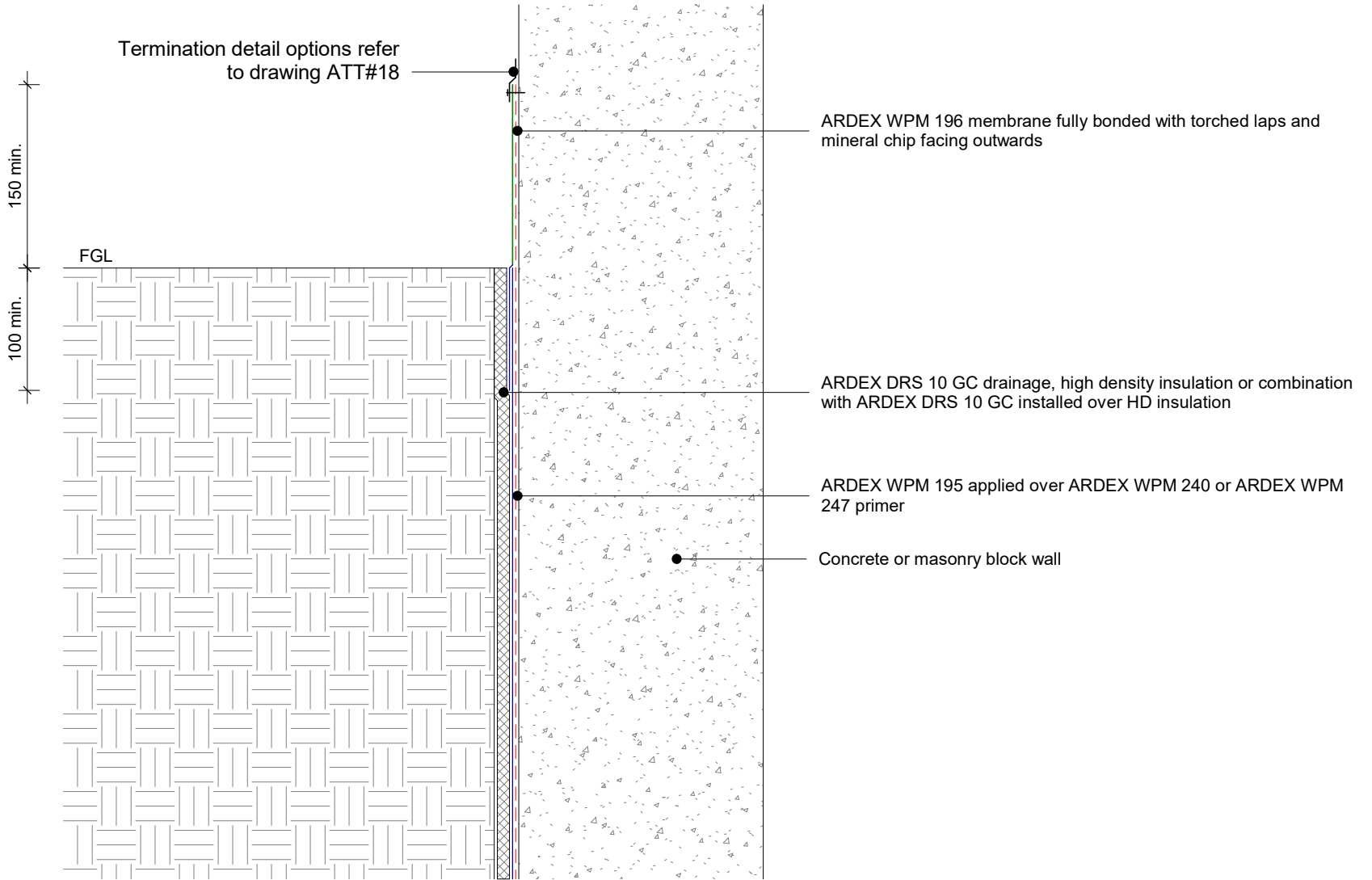
DATE 21/08/2020

SCALE As indicated



Disclaimer: Ardex makes every reasonable effort to ensure that the technical details, recommendations and other information contained in this drawing are accurate and represent our knowledge and experience at the time of design and publication. Ardex reserves the right to change the information without prior notice. Ardex provides the information in good faith with no representations or warranties (whether implied or otherwise), and will not be liable for any losses or damages (whether direct, indirect or consequential) whatsoever, whether in contract, negligence or any other action, arising out of or in connection with the use, or inability to use, the information.

It is your responsibility to ensure that our products are used only for the purposes for which they are intended and are used in accordance with any applicable specifications, guidelines, standards, codes of practice, regulations and laws. The supply of our products and services are also subject to certain terms, warranties and exclusions which are available on request.



ARDEX TANKING

Disclaimer: Ardex makes every reasonable effort to ensure that the technical details, recommendations and other information contained in this drawing are accurate and represent our knowledge and experience at the time of design and publication. Ardex reserves the right to change the information without prior notice. Ardex provides the information in good faith with no representations or warranties (whether implied or otherwise), and will not be liable for any losses or damages (whether direct, indirect or consequential) whatsoever, whether in contract, negligence or any other action, arising out of or in connection with the use, or inability to use, the information.

It is your responsibility to ensure that our products are used only for the purposes for which they are intended and are used in accordance with any applicable specifications, guidelines, standards, codes of practice, regulations and laws. The supply of our products and services are also subject to certain terms, warranties and exclusions which are available on request.

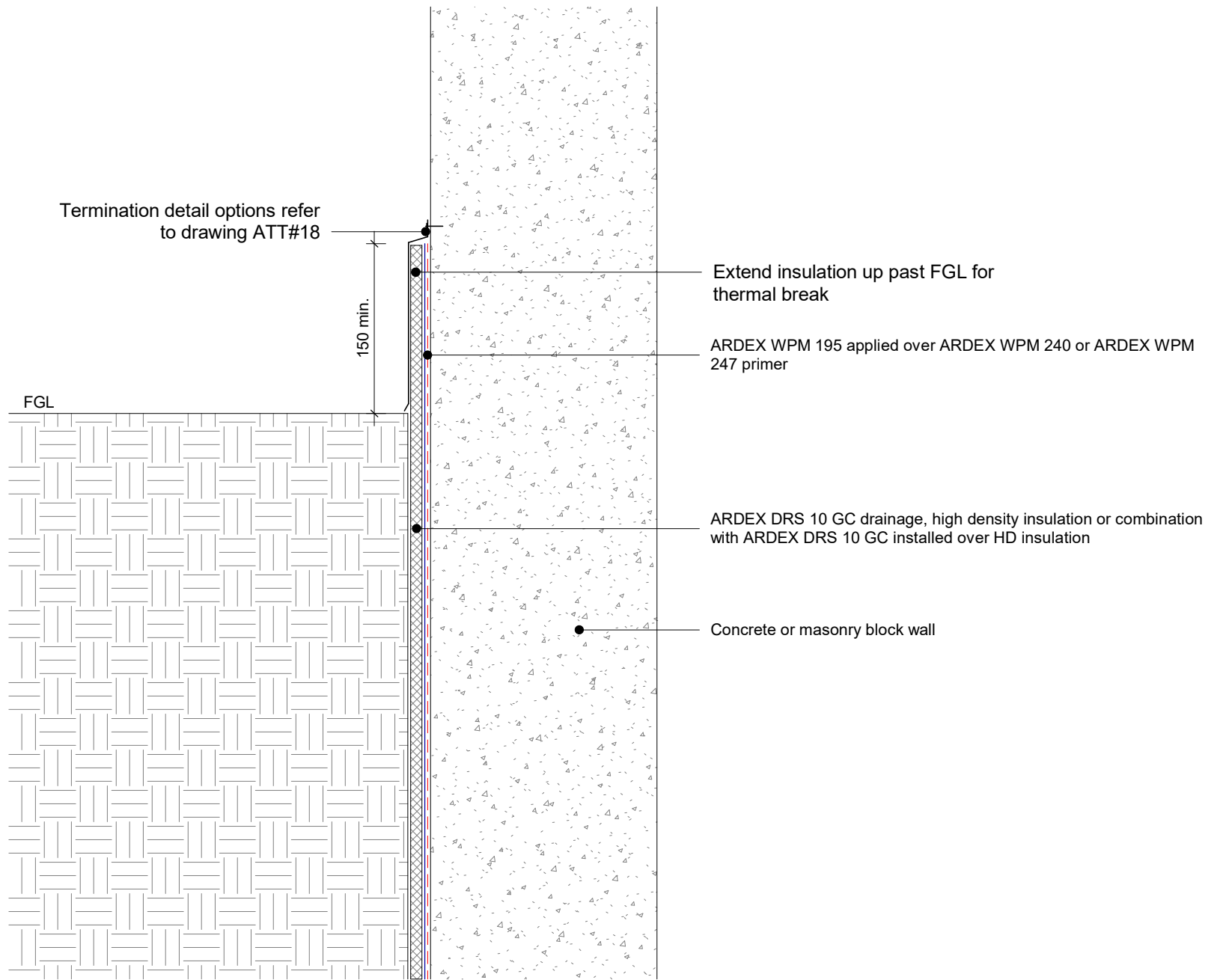
FGL OPTION 1
SHEET TITLE

DWG NO. **ATT-15**

DATE 21/08/2020

SCALE 1 : 5 @ A4





ARDEX TANKING

Disclaimer: Ardex makes every reasonable effort to ensure that the technical details, recommendations and other information contained in this drawing are accurate and represent our knowledge and experience at the time of design and publication. Ardex reserves the right to change the information without prior notice. Ardex provides the information in good faith with no representations or warranties (whether implied or otherwise), and will not be liable for any losses or damages (whether direct, indirect or consequential) whatsoever, whether in contract, negligence or any other action, arising out of or in connection with the use, or inability to use, the information.

It is your responsibility to ensure that our products are used only for the purposes for which they are intended and are used in accordance with any applicable specifications, guidelines, standards, codes of practice, regulations and laws. The supply of our products and services are also subject to certain terms, warranties and exclusions which are available on request.

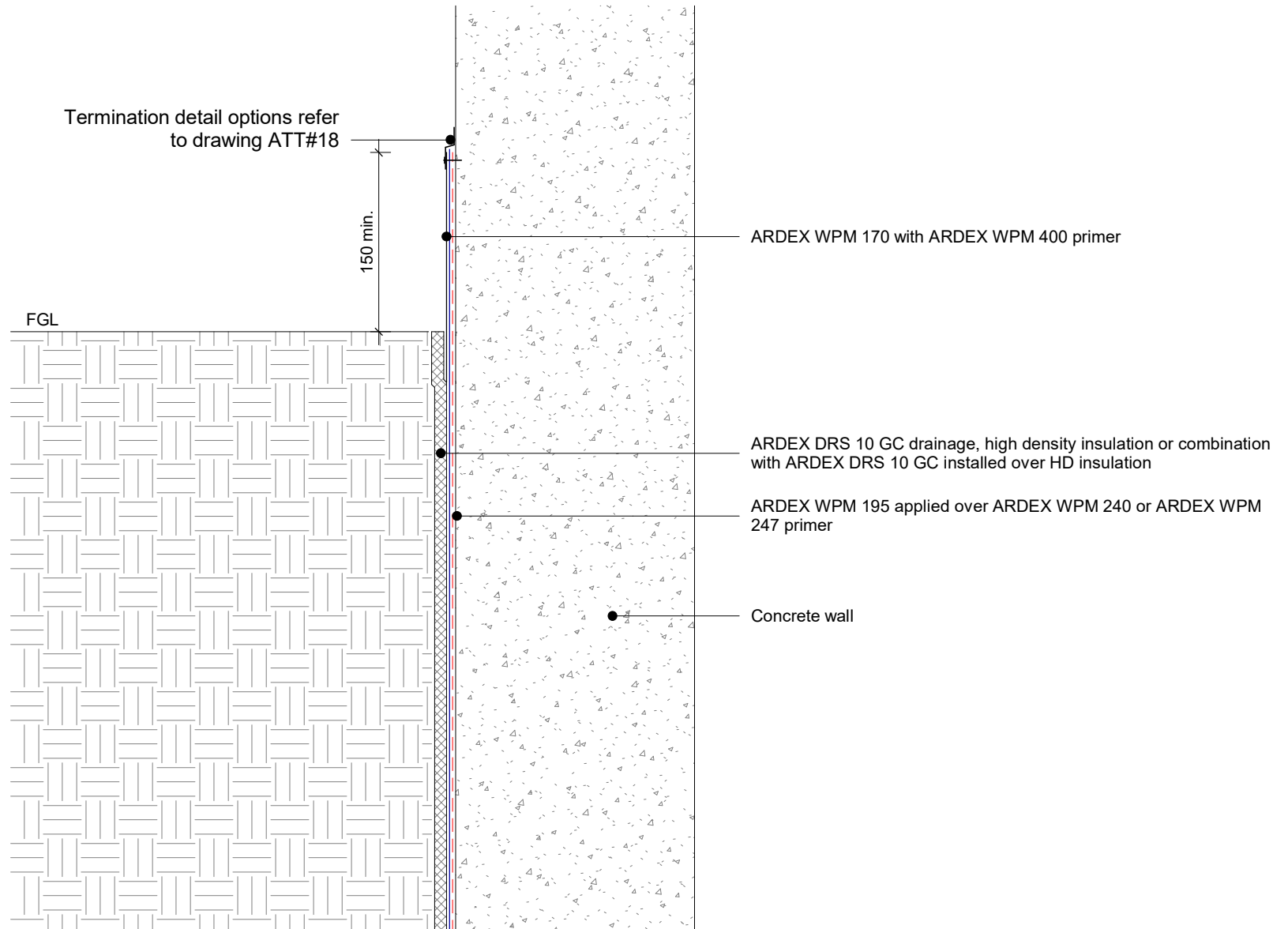
FGL OPTION 2
SHEET TITLE

DWG NO. **ATT-16**

DATE 21/08/2020

SCALE 1 : 5 @ A4





ARDEX TANKING

Disclaimer: Ardex makes every reasonable effort to ensure that the technical details, recommendations and other information contained in this drawing are accurate and represent our knowledge and experience at the time of design and publication. Ardex reserves the right to change the information without prior notice. Ardex provides the information in good faith with no representations or warranties (whether implied or otherwise), and will not be liable for any losses or damages (whether direct, indirect or consequential) whatsoever, whether in contract, negligence or any other action, arising out of or in connection with the use, or inability to use, the information.

It is your responsibility to ensure that our products are used only for the purposes for which they are intended and are used in accordance with any applicable specifications, guidelines, standards, codes of practice, regulations and laws. The supply of our products and services are also subject to certain terms, warranties and exclusions which are available on request.

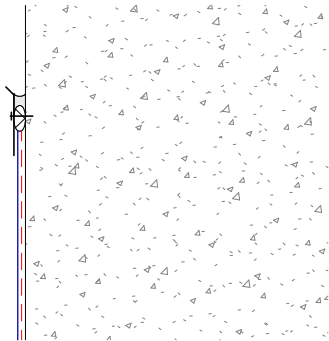
FGL OPTION 3
SHEET TITLE

DWG NO. **ATT-17**

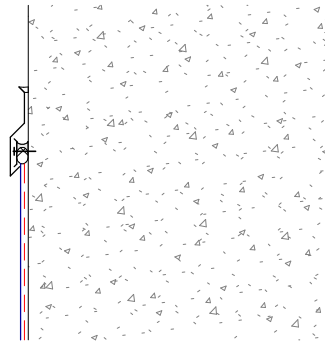
DATE 21/08/2020

SCALE 1 : 5 @ A4

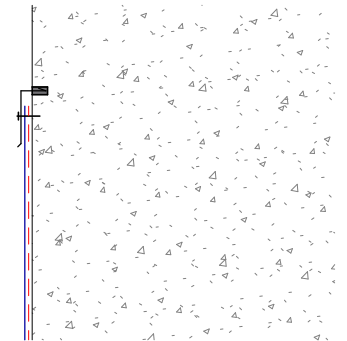




Single termination bar



Double termination bar



Chased termination

Membrane = ARDEX WPM 195
 Sealant = ARDEX Bituminous sealant
 Termination bar = ARDEX pressure bar

ARDEX TANKING

Disclaimer: Ardex makes every reasonable effort to ensure that the technical details, recommendations and other information contained in this drawing are accurate and represent our knowledge and experience at the time of design and publication. Ardex reserves the right to change the information without prior notice. Ardex provides the information in good faith with no representations or warranties (whether implied or otherwise), and will not be liable for any losses or damages (whether direct, indirect or consequential) whatsoever, whether in contract, negligence or any other action, arising out of or in connection with the use, or inability to use, the information.

It is your responsibility to ensure that our products are used only for the purposes for which they are intended and are used in accordance with any applicable specifications, guidelines, standards, codes of practice, regulations and laws. The supply of our products and services are also subject to certain terms, warranties and exclusions which are available on request.

FGL TERMINATION BAR
 SHEET TITLE

DWG NO. **ATT-18**

DATE 21/08/2020

SCALE 1 : 5 @ A4

