

ARDEX WPM 3000X DRAWING LIST

DRAWING NO.	SHEET TITLE	DATE
AS-00(X)	DRAWING LIST	21.08.2022
AS-01(X)	FOOTING JUNCTION NO STEP	21.08.2022
AS-02(X)	FOOTING JUNCTION STEP	21.08.2022
AS-03(X)	EXTERNAL CORNER	21.08.2022
AS-04(X)	CONTROL JOINT	21.08.2022
AS-05(X)	CHASE FLASHING TERMINATION	21.08.2022
AS-06(X)	PRESSURE BAR TERMINATION	21.08.2022
AS-07(X)	TANKED WALL-ROOF DECK JUNCTION	21.08.2022
AS-08(X)	INTERNAL CORNER	21.08.2022
AS-09(X)	OPEN CUT WALL PIPE PENETRATION	21.08.2022
AS-10(X)	FOOTING JUNCTION NO STEP 1	21.08.2022
AS-11(X)	RAISED PILE	21.08.2022
AS-12(X)	FLUSH PILE	21.08.2022
AS-13(X)	SLAB PENETRATION	21.08.2022
AS-14(X)	WALL TO SLAB DPM	21.08.2022
AS-15(X)	FOUNDATION TO SLAB DPM	21.08.2022

WPM 3000X

DRAWING LIST

DWG NO. **AS-00(X)**

DATE 21.08.2022

SCALE @ A4



Disclaimer: Ardex makes every reasonable effort to ensure that the technical details, recommendations and other information contained in this drawing are accurate and represent our knowledge and experience at the time of design and publication. Ardex reserves the right to change the information without prior notice. Ardex provides the information in good faith with no representations or warranties (whether implied or otherwise), and will not be liable for any losses or damages (whether direct, indirect or consequential) whatsoever, whether in contract, negligence or any other action, arising out of or in connection with the use, or inability to use, the information.
 It is your responsibility to ensure that our products are used only for the purposes for which they are intended and are used in accordance with any applicable specifications, guidelines, standards, codes of practice, regulations and laws. The supply of our products and services are also subject to certain terms, warranties and exclusions which are available on request.

ARDEX WPM 240/247 OR ARDEX
WPM 300 FOR DAMP/GREEN
CONCRETE

ARDEX WPM 3000X DPM
MEMBRANE

PRECAST CONCRETE WITH NO
VOIDS
BLOCKWORK WITH FLUSH FINISH
TO DPM SIDE

ARDEX DRS 10 GC PROTECTION
BOARD

ARDEX WPM 3000X DPM
MEMBRANE

WATER STOP ARDEX WPM 1955

ARDEX WPM 3000X DPM
UNDERFLASHING MINIMUM 300mm
WIDE

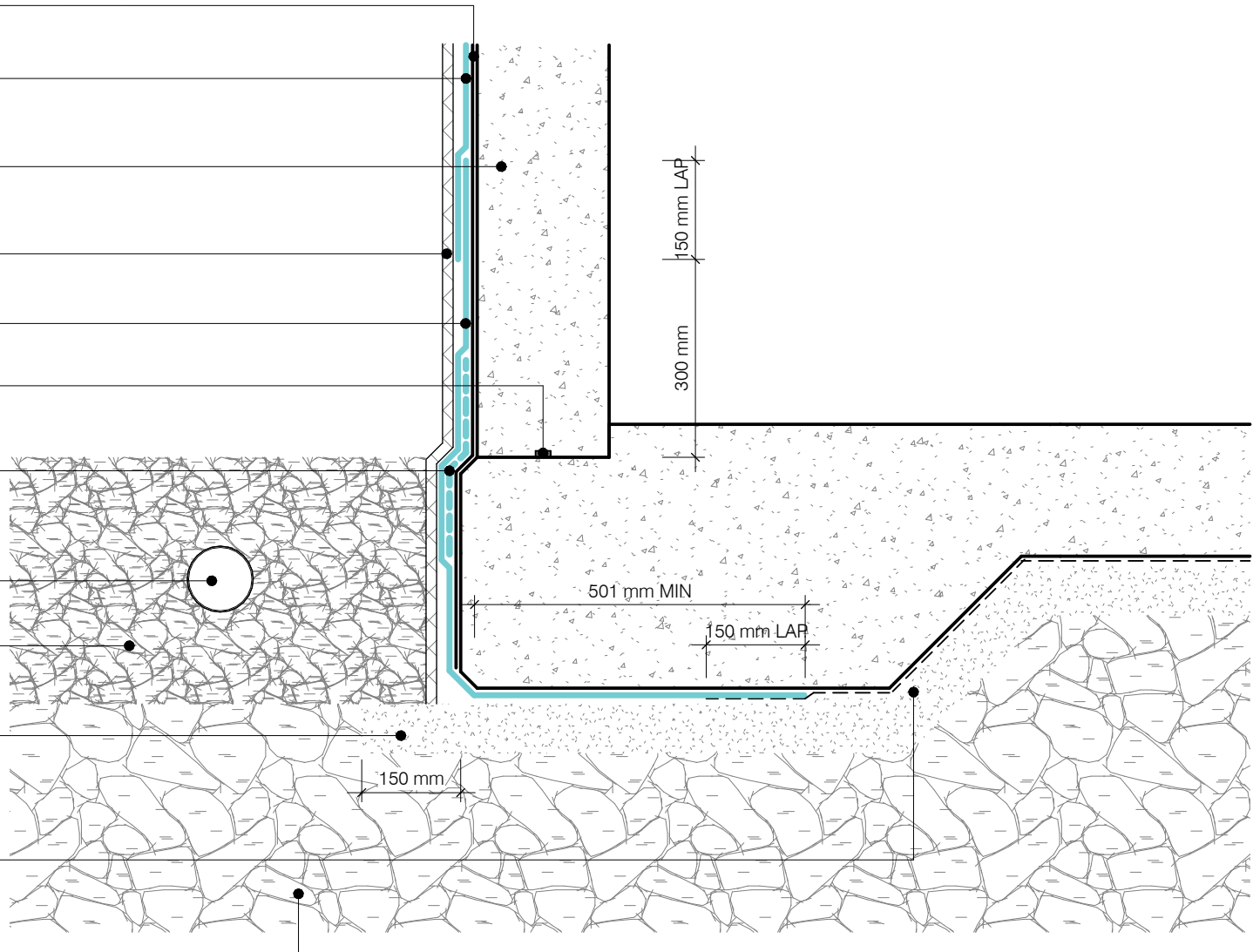
100mm SLOTTED DRAIN WITH
FILTER FABRIC MINIMUM FALL 1:200
TO DRAINS

AGGREGATE AS SPECIFIED

MIN 75mm SITE CONCRETE OR
COMPACTED HARDFILL OR SAND
BLINDING AS PER ENGINEERS
SPECIFICATION

HORIZONTAL DPC NOT COVERED
BY ARDEX WARRANTY
ARDEX RECOMMEND TAKING
MEMBRANE UNDER ENTIRE SLAB
FOR COMPLETE WATERPROOFING

20mm COMPACTED BASE



WPM 3000X

FOOTING JUNCTION NO STEP

DWG NO. **AS-01(X)**

DATE 21.08.2022

SCALE @ 1:10



Disclaimer: Ardex makes every reasonable effort to ensure that the technical details, recommendations and other information contained in this drawing are accurate and represent our knowledge and experience at the time of design and publication. Ardex reserves the right to change the information without prior notice. Ardex provides the information in good faith with no representations or warranties (whether implied or otherwise), and will not be liable for any losses or damages (whether direct, indirect or consequential) whatsoever, whether in contract, negligence or any other action, arising out of or in connection with the use, or inability to use, the information. It is your responsibility to ensure that our products are used only for the purposes for which they are intended and are used in accordance with any applicable specifications, guidelines, standards, codes of practice, regulations and laws. The supply of our products and services are also subject to certain terms, warranties and exclusions which are available on request.

ARDEX WPM 240/247 OR ARDEX
WPM 300 FOR DAMP/GREEN
CONCRETE

ARDEX WPM 3000X DPM
MEMBRANE

PRECAST CONCRETE WITH NO
VOIDS
BLOCKWORK WITH FLUSH FINISH
TO DPM SIDE

ARDEX DRS 10 GC PROTECTION
BOARD

ARDEX WPM 3000X DPM
MEMBRANE

WATER STOP ARDEX WPM 1955

20mm ARDEX A 46 FILLET MINIMUM
AT ALL INTERNAL JUNCTIONS

ARDEX WPM 3000X DPM
UNDERFLASHING MINIMUM 300mm
WIDE

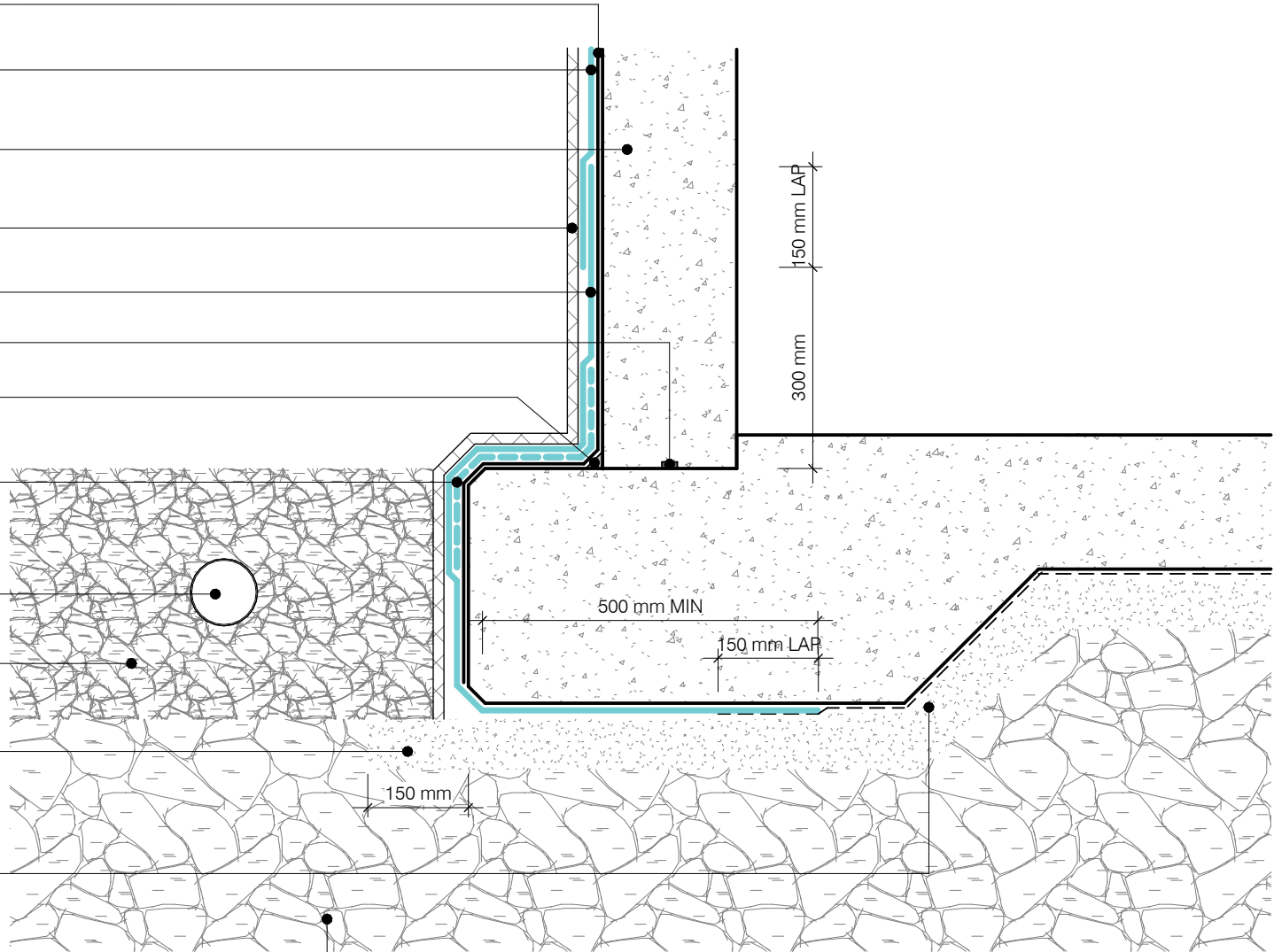
100mm SLOTTED DRAIN WITH
FILTER FABRIC MINIMUM FALL 1:200
TO DRAINS

AGGREGATE AS SPECIFIED

MIN 75mm SITE CONCRETE OR
COMPACTED HARDFILL OR SAND
BLINDING AS PER ENGINEERS
SPECIFICATION

HORIZONTAL DPC NOT COVERED
BY ARDEX WARRANTY
ARDEX RECOMMEND TAKING
MEMBRANE UNDER ENTIRE SLAB
FOR COMPLETE WATERPROOFING

20mm COMPACTED BASE



WPM 3000X

FOOTING JUNCTION STEP

DWG NO.

AS-02(X)

DATE

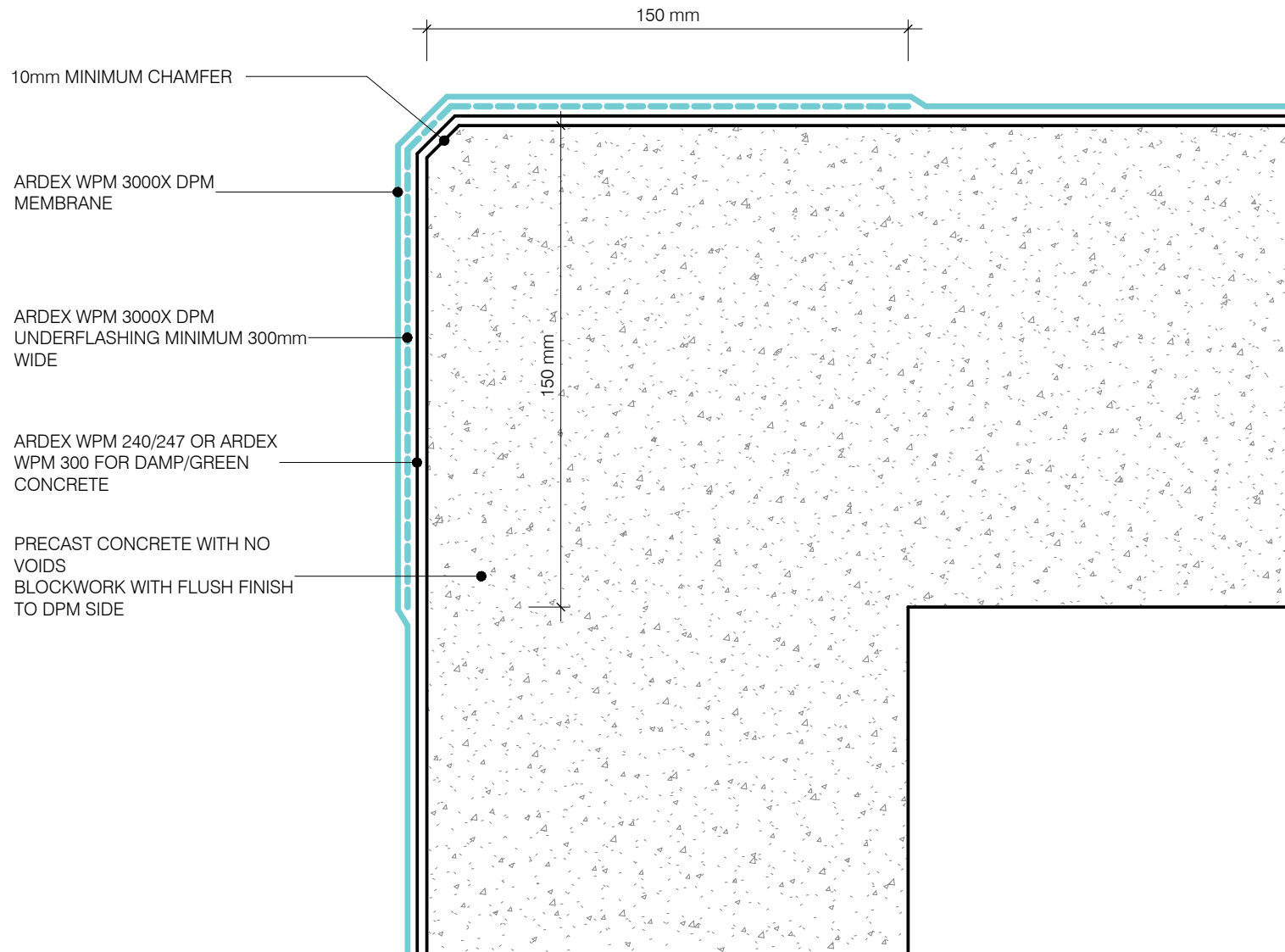
21.08.2022

SCALE

@ 1/4"=1'-0"



Disclaimer: Ardex makes every reasonable effort to ensure that the technical details, recommendations and other information contained in this drawing are accurate and represent our knowledge and experience at the time of design and publication. Ardex reserves the right to change the information without prior notice. Ardex provides the information in good faith with no representations or warranties (whether implied or otherwise), and will not be liable for any losses or damages (whether direct, indirect or consequential) whatsoever, whether in contract, negligence or any other action, arising out of or in connection with the use, or inability to use, the information. It is your responsibility to ensure that our products are used only for the purposes for which they are intended and are used in accordance with any applicable specifications, guidelines, standards, codes of practice, regulations and laws. The supply of our products and services are also subject to certain terms, warranties and exclusions which are available on request.



WPM 3000X

EXTERNAL CORNER

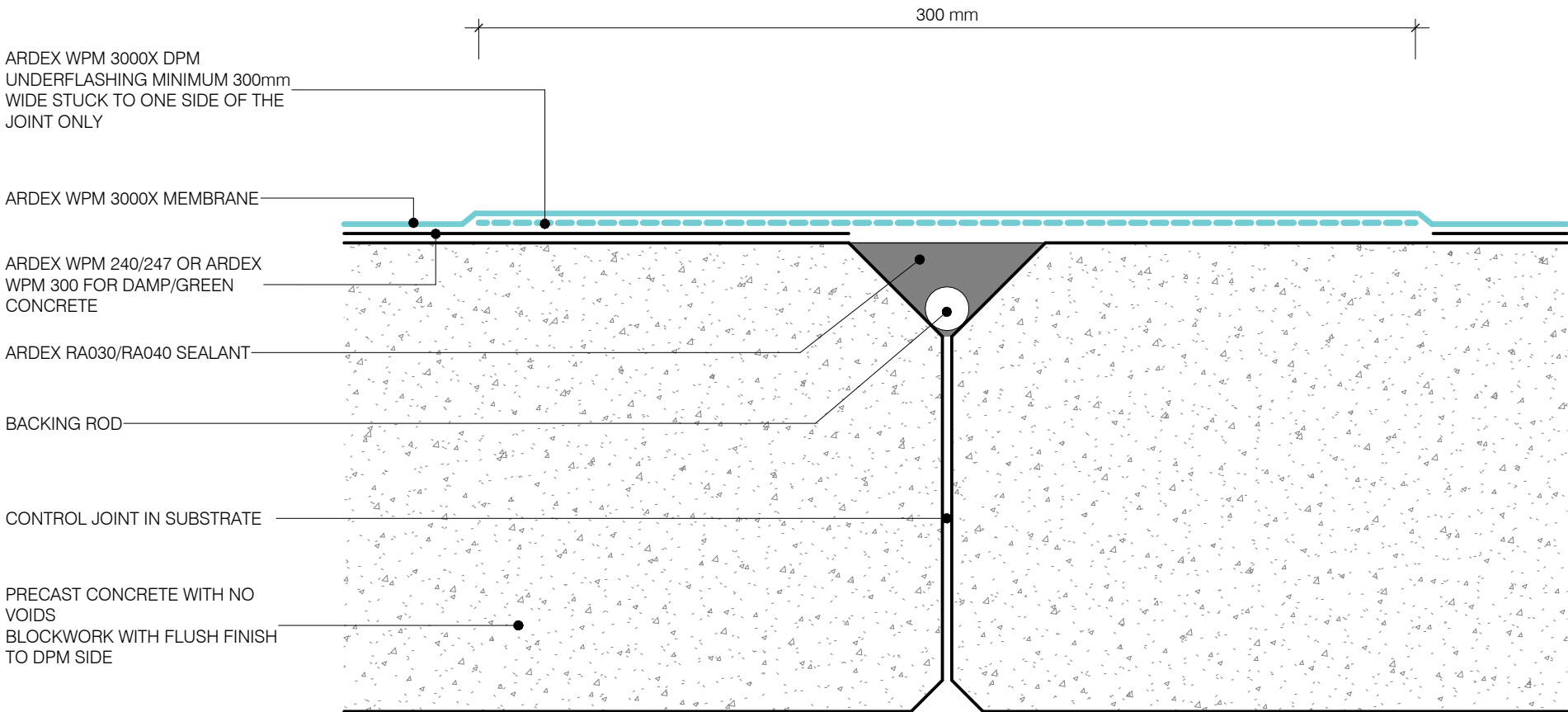
DWG NO. **AS-03(X)**

DATE 21.08.2022

SCALE @ 1/42



Disclaimer: Ardex makes every reasonable effort to ensure that the technical details, recommendations and other information contained in this drawing are accurate and represent our knowledge and experience at the time of design and publication. Ardex reserves the right to change the information without prior notice. Ardex provides the information in good faith with no representations or warranties (whether implied or otherwise), and will not be liable for any losses or damages (whether direct, indirect or consequential) whatsoever, whether in contract, negligence or any other action, arising out of or in connection with the use, or inability to use, the information. It is your responsibility to ensure that our products are used only for the purposes for which they are intended and are used in accordance with any applicable specifications, guidelines, standards, codes of practice, regulations and laws. The supply of our products and services are also subject to certain terms, warranties and exclusions which are available on request.



WPM 3000X

CONTROL JOINT

DWG NO. **AS-04(X)**

DATE 21.08.2022

SCALE @ 1:42



Disclaimer: Ardex makes every reasonable effort to ensure that the technical details, recommendations and other information contained in this drawing are accurate and represent our knowledge and experience at the time of design and publication. Ardex reserves the right to change the information without prior notice. Ardex provides the information in good faith with no representations or warranties (whether implied or otherwise), and will not be liable for any losses or damages (whether direct, indirect or consequential) whatsoever, whether in contract, negligence or any other action, arising out of or in connection with the use, or inability to use, the information. It is your responsibility to ensure that our products are used only for the purposes for which they are intended and are used in accordance with any applicable specifications, guidelines, standards, codes of practice, regulations and laws. The supply of our products and services are also subject to certain terms, warranties and exclusions which are available on request.

PRECAST CONCRETE WITH NO
VOIDS
BLOCKWORK WITH FLUSH FINISH
TO DPM SIDE

SEALANT

CHASE FLASHING S/S OR
ALUMINIUM WITH SEALANT

ARDEX WPM 3000X DPM
MEMBRANE

ARDEX WPM 240/247 OR ARDEX
WPM 300 FOR DAMP/GREEN
CONCRETE

ARDEX DRS 10 GC PROTECTION
BOARD

ARDEX PRESSURE BAR FIXED @
200mm CENTRES

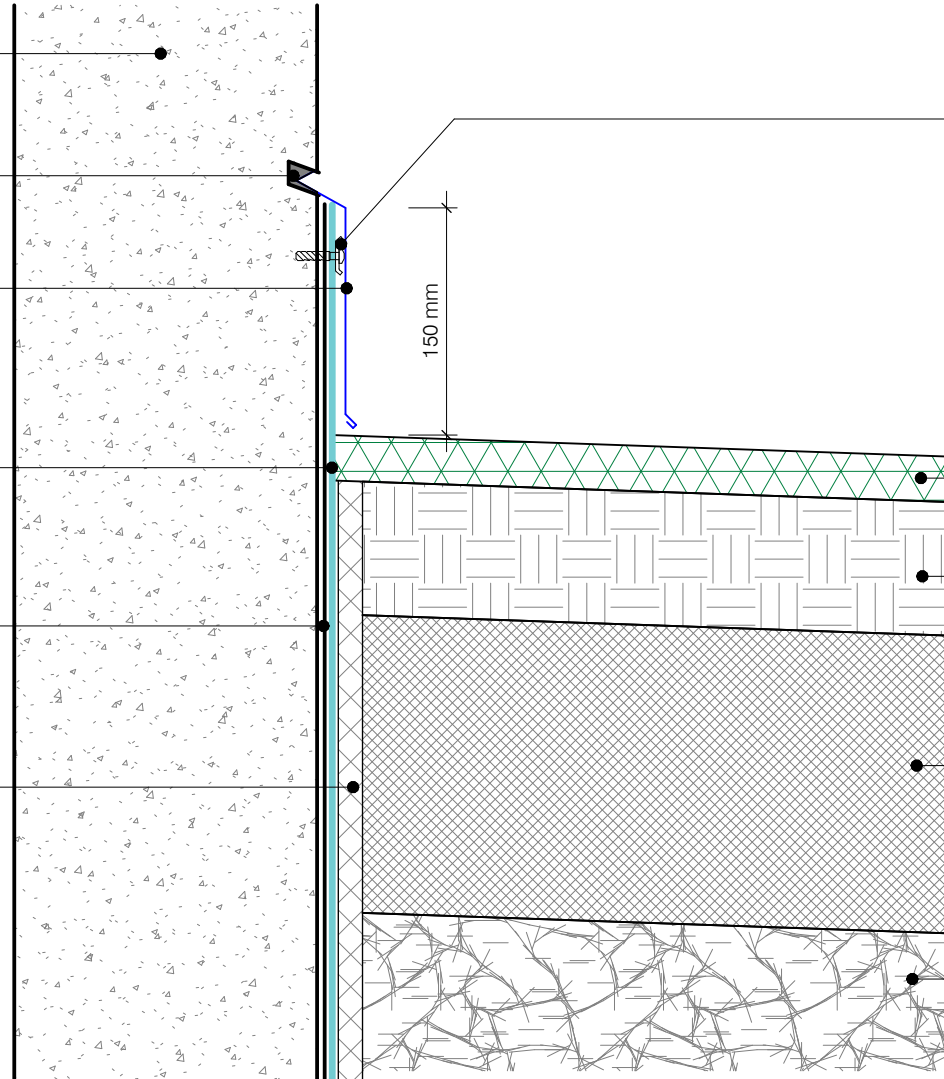
GRASS

SOIL

IMPERVIOUS CLAY FILL

DRAINAGE AS SPECIFIED

150 mm



WPM 3000X

CHASE FLASHING TERMINATION

DWG NO. **AS-05(X)**

DATE 21.08.2022

SCALE @ 1/45



Disclaimer: Ardex makes every reasonable effort to ensure that the technical details, recommendations and other information contained in this drawing are accurate and represent our knowledge and experience at the time of design and publication. Ardex reserves the right to change the information without prior notice. Ardex provides the information in good faith with no representations or warranties (whether implied or otherwise), and will not be liable for any losses or damages (whether direct, indirect or consequential) whatsoever, whether in contract, negligence or any other action, arising out of or in connection with the use, or inability to use, the information. It is your responsibility to ensure that our products are used only for the purposes for which they are intended and are used in accordance with any applicable specifications, guidelines, standards, codes of practice, regulations and laws. The supply of our products and services are also subject to certain terms, warranties and exclusions which are available on request.

PRECAST CONCRETE WITH NO
VOIDS
BLOCKWORK WITH FLUSH FINISH
TO DPM SIDE

ARDEX PRESSURE BAR 10801 FIXED
AT 200 CENTRES AND ARDEX
BITUMINOUS SEALANT

ARDEX WPM 3000X DPM
MEMBRANE

ARDEX WPM 240/247 OR ARDEX
WPM 300 FOR DAMP/GREEN
CONCRETE

ARDEX DRS 10 GC PROTECTION
BOARD

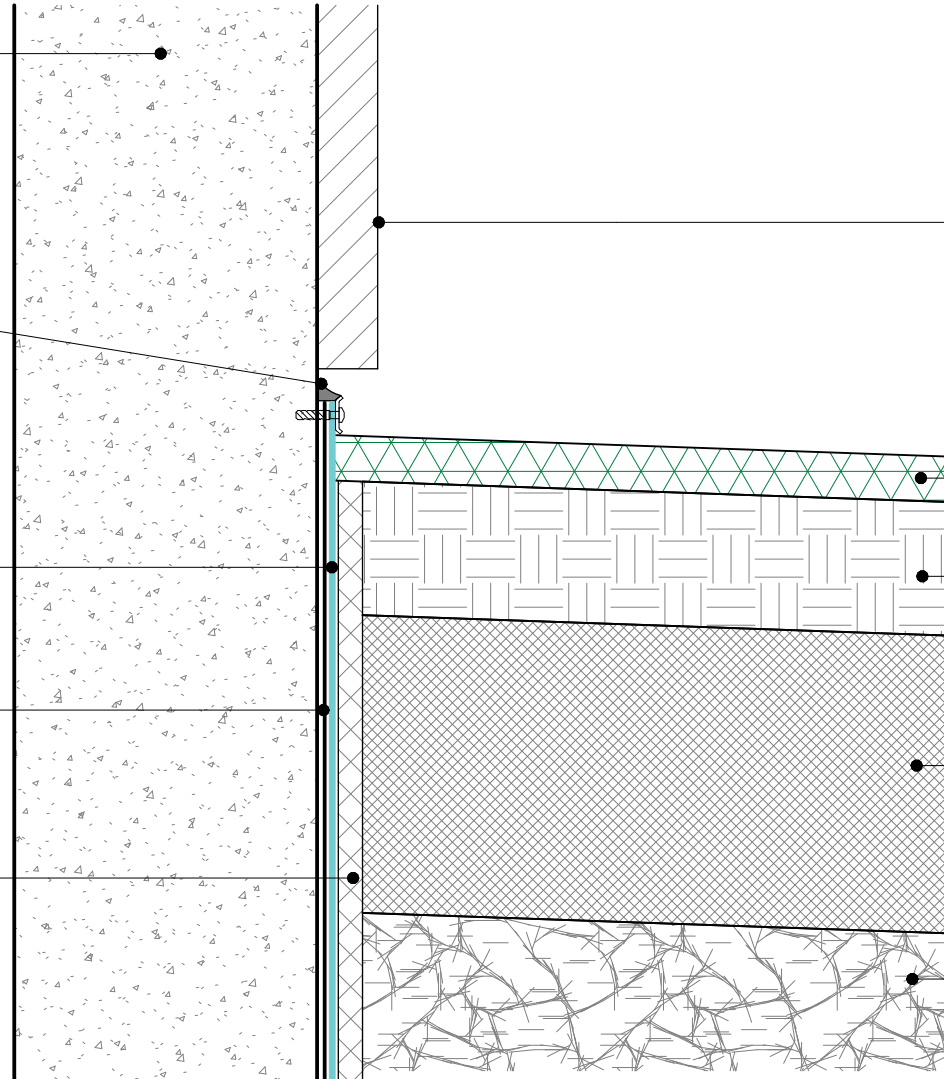
CLADDING OR WATERPROOFING

GRASS

SOIL

IMPERVIOUS CLAY FILL

DRAINAGE AS SPECIFIED



WPM 3000X

PRESSURE BAR TERMINATION

DWG NO. **AS-06(X)**

DATE 21.08.2022

SCALE @ 1/45



Disclaimer: Ardex makes every reasonable effort to ensure that the technical details, recommendations and other information contained in this drawing are accurate and represent our knowledge and experience at the time of design and publication. Ardex reserves the right to change the information without prior notice. Ardex provides the information in good faith with no representations or warranties (whether implied or otherwise), and will not be liable for any losses or damages (whether direct, indirect or consequential) whatsoever, whether in contract, negligence or any other action, arising out of or in connection with the use, or inability to use, the information. It is your responsibility to ensure that our products are used only for the purposes for which they are intended and are used in accordance with any applicable specifications, guidelines, standards, codes of practice, regulations and laws. The supply of our products and services are also subject to certain terms, warranties and exclusions which are available on request.

5mm MINIMUM RADIUS TO ALL EXTERNAL CORNERS

ARDEX SPECIFIED WATERPROOFING MEMBRANE

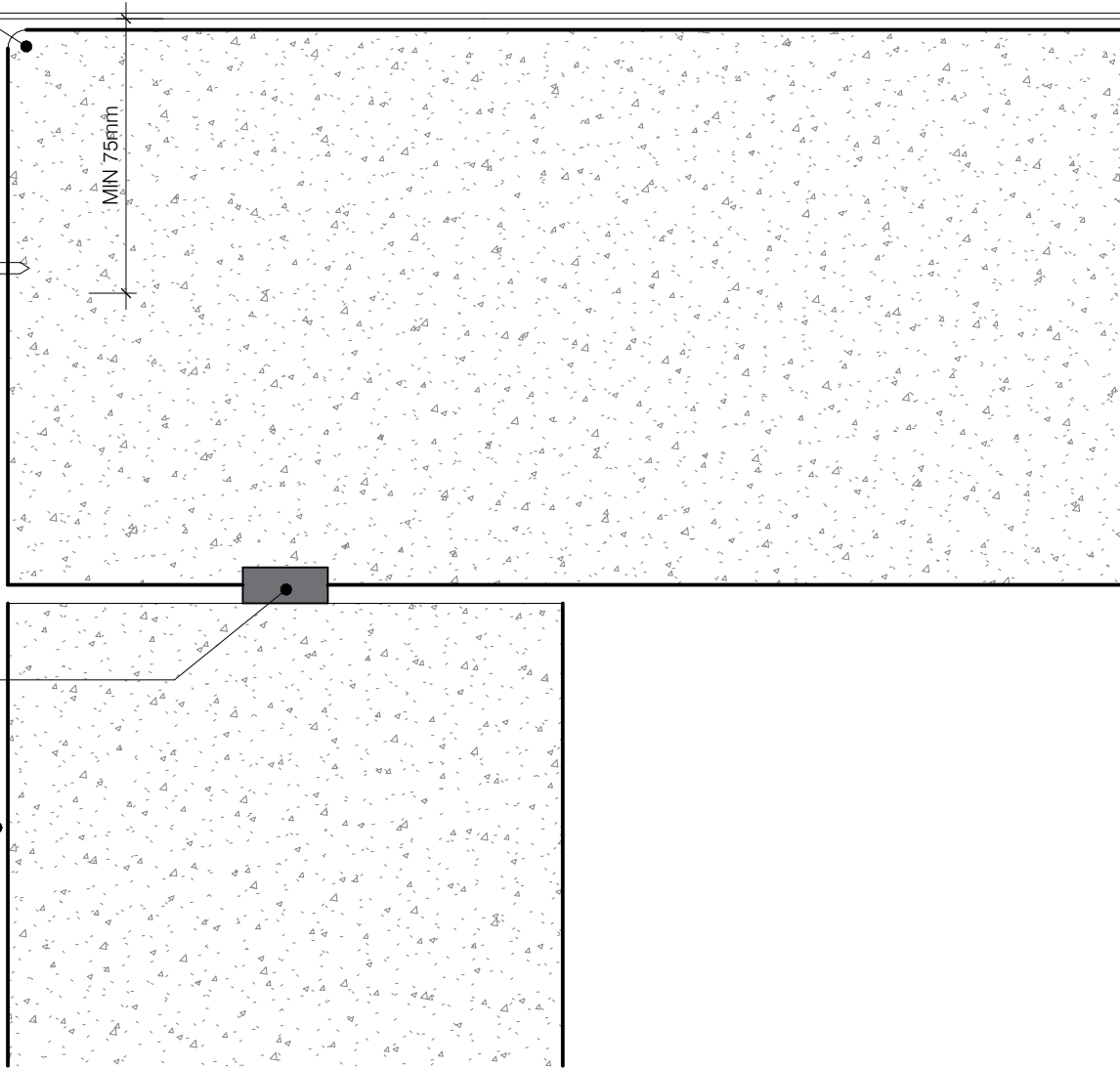
ARDEX PRESSURE BAR 10801 FIXED @ 200 CENTRES

ARDEX WPM 3000X DPM MEMBRANE

ARDEX WPM 3000X DPM UNDERFLASHING MINIMUM 300mm WIDE

WATER STOP ARDEX WPM 1955

ARDEX WPM 240/247 OR ARDEX WPM 300 FOR DAMP/GREEN CONCRETE



WPM 3000X

TANKED WALL-ROOF DECK JUNCTION

DWG NO. **AS-07(X)**

DATE 21.08.2022

SCALE @ 1/42



Disclaimer: Ardex makes every reasonable effort to ensure that the technical details, recommendations and other information contained in this drawing are accurate and represent our knowledge and experience at the time of design and publication. Ardex reserves the right to change the information without prior notice. Ardex provides the information in good faith with no representations or warranties (whether implied or otherwise), and will not be liable for any losses or damages (whether direct, indirect or consequential) whatsoever, whether in contract, negligence or any other action, arising out of or in connection with the use, or inability to use, the information. It is your responsibility to ensure that our products are used only for the purposes for which they are intended and are used in accordance with any applicable specifications, guidelines, standards, codes of practice, regulations and laws. The supply of our products and services are also subject to certain terms, warranties and exclusions which are available on request.

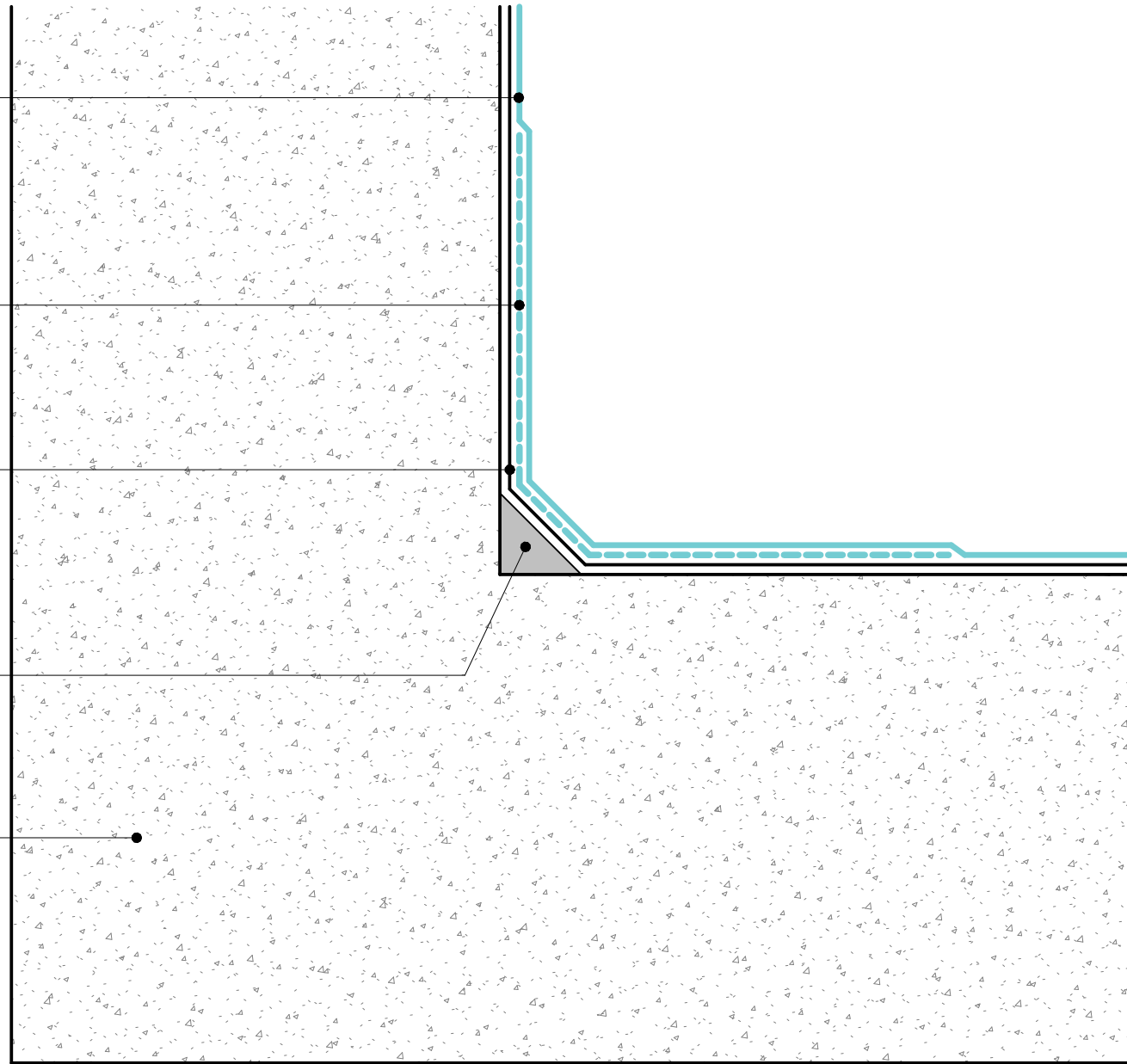
ARDEX WPM 3000X DPM
MEMBRANE

ARDEX WPM 3000X DPM
UNDERFLASHING MINIMUM 300mm
WIDE

ARDEX WPM 240/247 OR ARDEX
WPM 300 FOR DAMP/GREEN
CONCRETE

20mm FILLET MINIMUM

PRECAST CONCRETE WITH NO
VOIDS
BLOCKWORK WITH FLUSH FINISH
TO DPM SIDE



WPM 3000X

INTERNAL CORNER

DWG NO. **AS-08(X)**

DATE 21.08.2022

SCALE @ 1:42



Disclaimer: Ardex makes every reasonable effort to ensure that the technical details, recommendations and other information contained in this drawing are accurate and represent our knowledge and experience at the time of design and publication. Ardex reserves the right to change the information without prior notice. Ardex provides the information in good faith with no representations or warranties (whether implied or otherwise), and will not be liable for any losses or damages (whether direct, indirect or consequential) whatsoever, whether in contract, negligence or any other action, arising out of or in connection with the use, or inability to use, the information. It is your responsibility to ensure that our products are used only for the purposes for which they are intended and are used in accordance with any applicable specifications, guidelines, standards, codes of practice, regulations and laws. The supply of our products and services are also subject to certain terms, warranties and exclusions which are available on request.

ARDEX WPM 240/247 OR ARDEX
WPM 300 FOR DAMP/GREEN
CONCRETE

ARDEX WPM 3000X DPM
MEMBRANE

ARDEX WPM 3000X DPM
UNDERFLASHING MINIMUM 300mm
WIDE

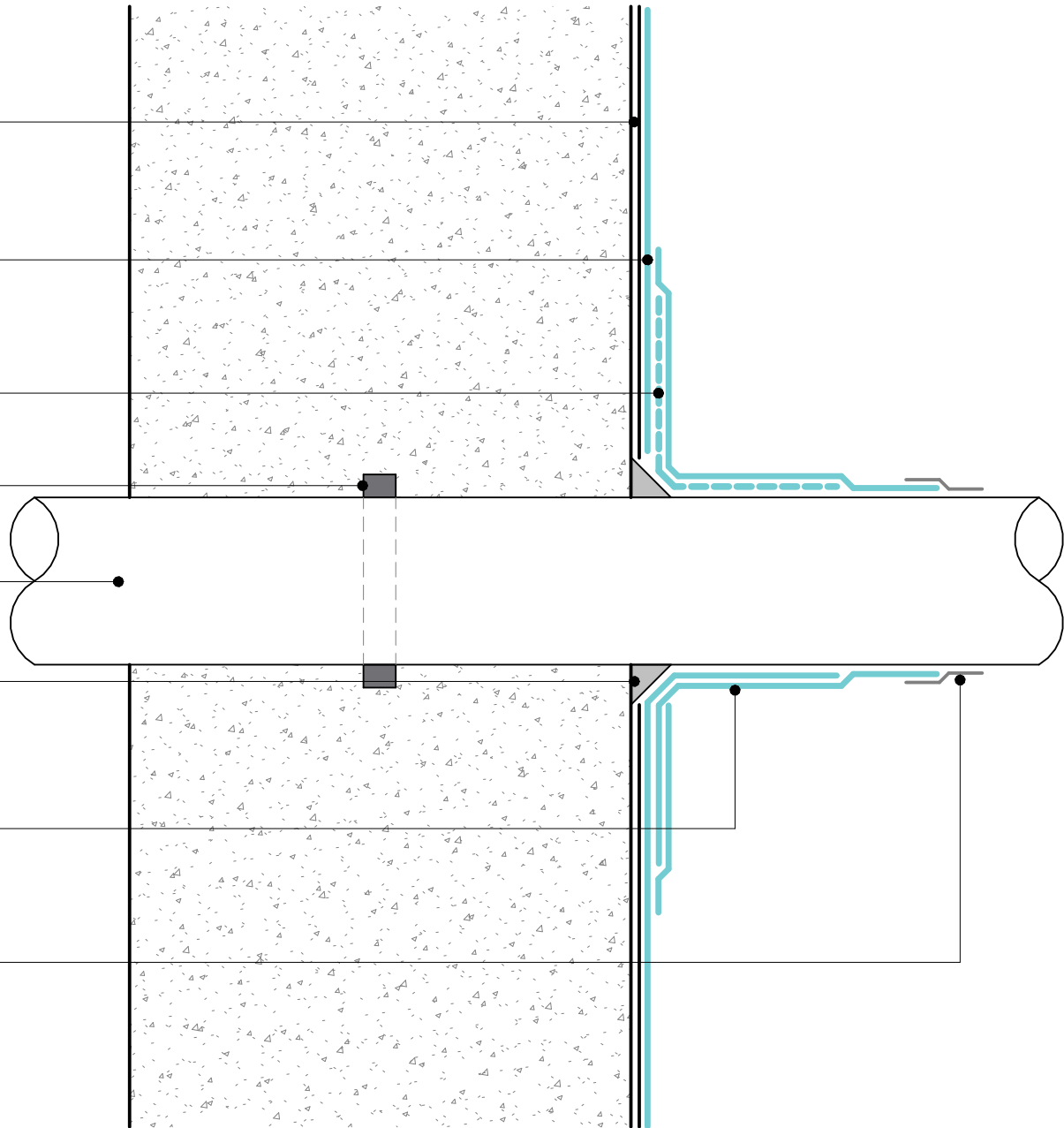
WATER STOP

PIPE

ARDEX BITUMINOUS SEALANT
12mm BEAD

ARDEX WPM 3000X DPM
MEMBRANE

ARDEX BITUMINOUS SEALANT
GUNNED BETWEEN PRE-FORMED
TOP HAT/BOOT FLASHING AND PIPE
PRIOR TO TIGHTENING OF CABLE
TIE



WPM 3000X

OPEN CUT WALL PIPE PENETRATION

DWG NO. **AS-09(X)**

DATE 21.08.2022

SCALE @ 1/4"=1'-0"



Disclaimer: Ardex makes every reasonable effort to ensure that the technical details, recommendations and other information contained in this drawing are accurate and represent our knowledge and experience at the time of design and publication. Ardex reserves the right to change the information without prior notice. Ardex provides the information in good faith with no representations or warranties (whether implied or otherwise), and will not be liable for any losses or damages (whether direct, indirect or consequential) whatsoever, whether in contract, negligence or any other action, arising out of or in connection with the use, or inability to use, the information. It is your responsibility to ensure that our products are used only for the purposes for which they are intended and are used in accordance with any applicable specifications, guidelines, standards, codes of practice, regulations and laws. The supply of our products and services are also subject to certain terms, warranties and exclusions which are available on request.

ARDEX WPM 240/247 OR ARDEX
WPM 300 FOR DAMP/GREEN
CONCRETE

ARDEX WPM 3000X DPM
MEMBRANE

PRECAST CONCRETE WITH NO
VOIDS
BLOCKWORK WITH FLUSH FINISH
TO DPM SIDE

ARDEX DRS 10 GC PROTECTION
BOARD

WATER STOP ARDEX WPM 1955

300mm WIDE WPM 3000 UNDER
FLASHING TO BRIDGE JOINT

TAPE POLYTHENE DPM TO
UNDER FLASHING

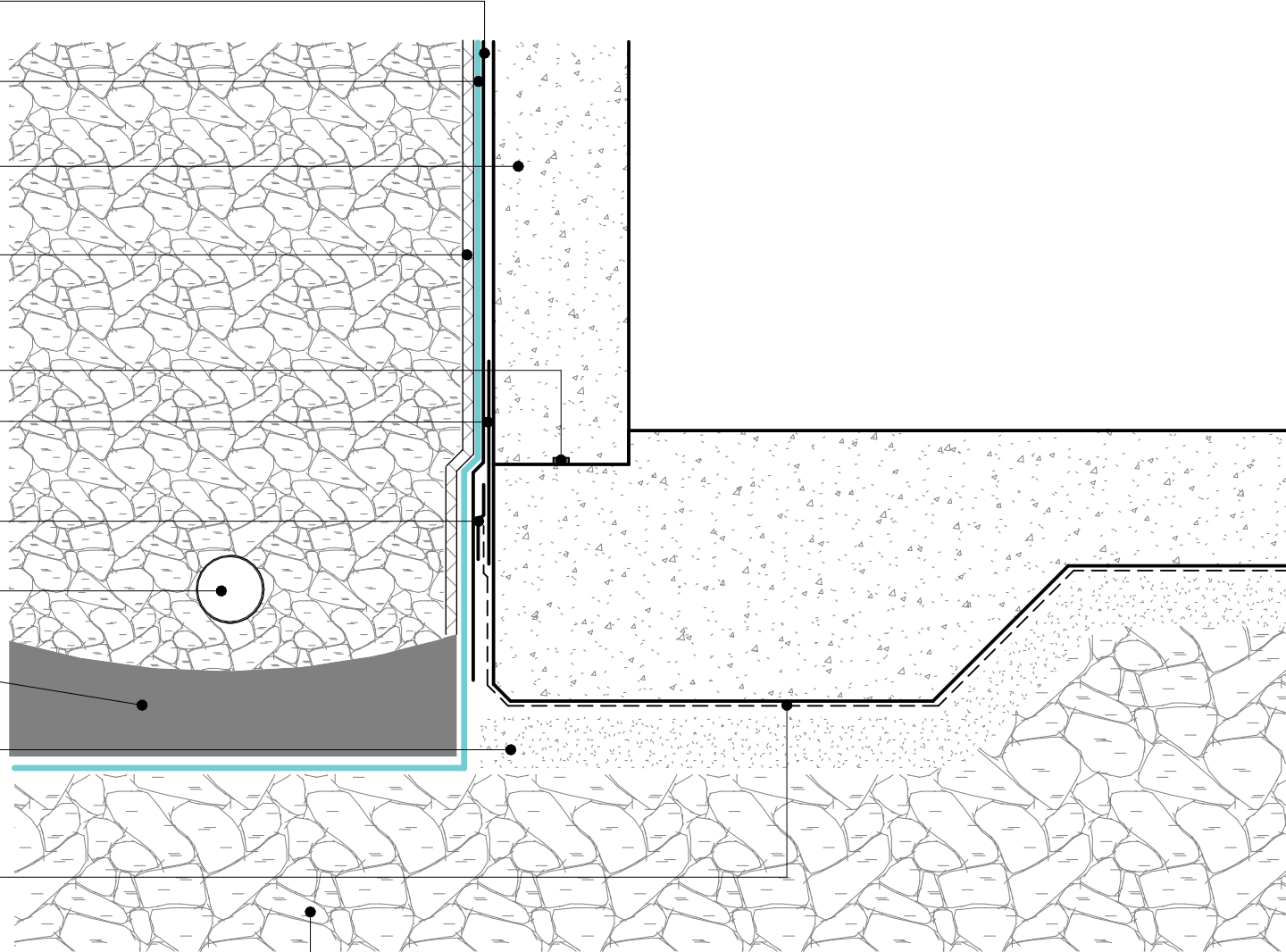
100mm SLOTTED DRAIN WITH
FILTER FABRIC MINIMUM FALL 1:200
TO DRAINS

DISH DRAIN FORMED WITH SITE
CONCRETE WITH 1:200 FALL TO
DRAIN

MIN 75mm SITE CONCRETE OR
COMPACTED HARDFILL OR SAND
BLINDING AS PER ENGINEERS
SPECIFICATION

HORIZONTAL DPC NOT COVERED
BY ARDEX WARRANTY
ARDEX RECOMMEND TAKING
MEMBRANE UNDER ENTIRE SLAB
FOR COMPLETE WATERPROOFING

20mm COMPACTED BASE



WPM 3000X

FOOTING JUNCTION NO STEP 1

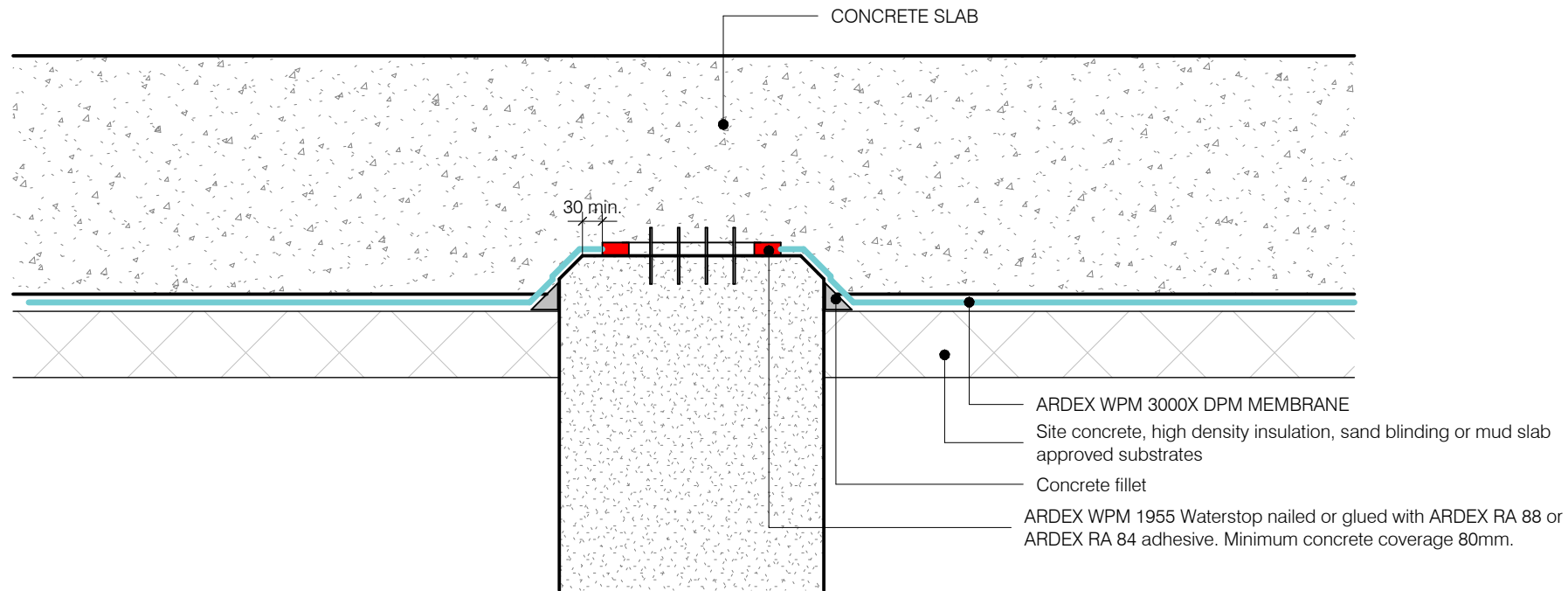
DWG NO. **AS-10(X)**

DATE 21.08.2022

SCALE @ 1/4"=1'-0"



Disclaimer: ArDEX makes every reasonable effort to ensure that the technical details, recommendations and other information contained in this drawing are accurate and represent our knowledge and experience at the time of design and publication. ArDEX reserves the right to change the information without prior notice. ArDEX provides the information in good faith with no representations or warranties (whether implied or otherwise), and will not be liable for any losses or damages (whether direct, indirect or consequential) whatsoever, whether in contract, negligence or any other action, arising out of or in connection with the use, or inability to use, the information. It is your responsibility to ensure that our products are used only for the purposes for which they are intended and are used in accordance with any applicable specifications, guidelines, standards, codes of practice, regulations and laws. The supply of our products and services are also subject to certain terms, warranties and exclusions which are available on request.



WPM 3000X

RAISED PILE

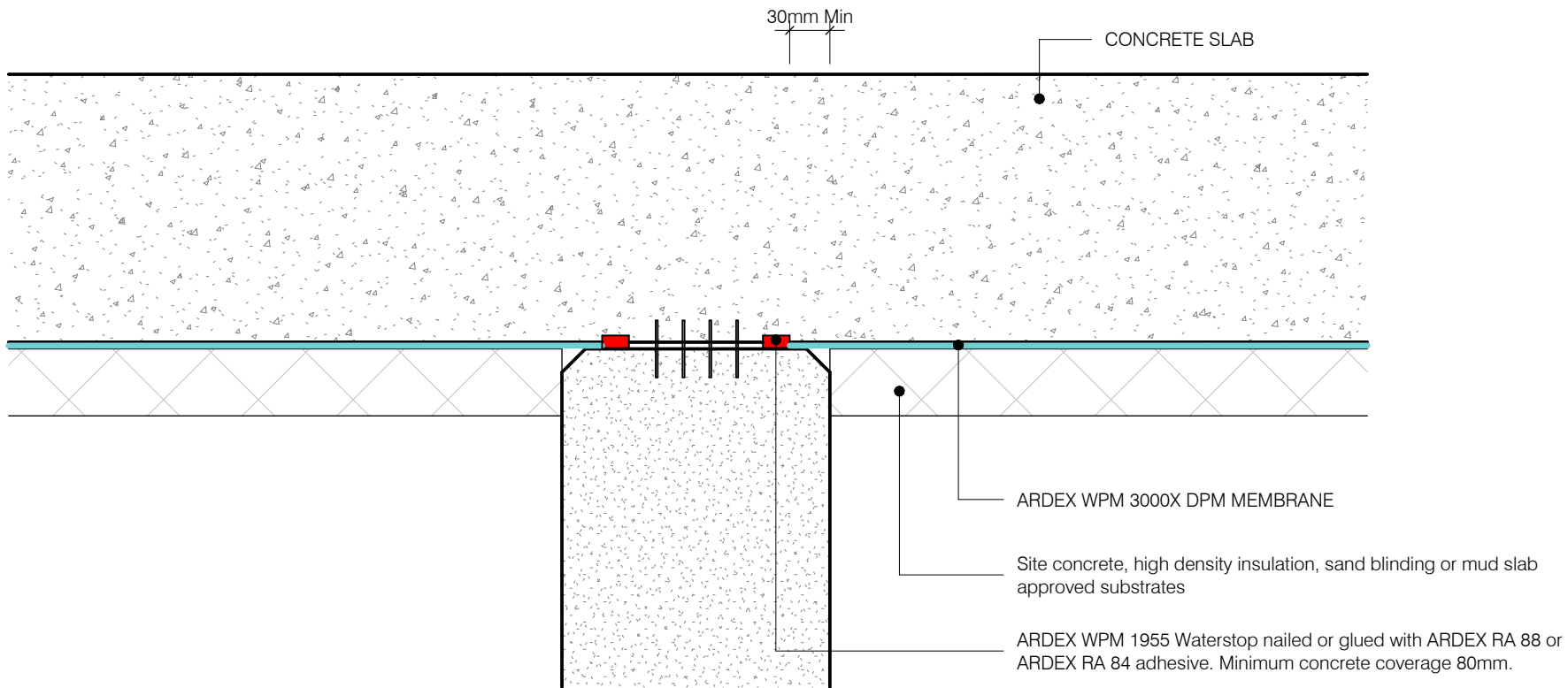
Disclaimer: Ardex makes every reasonable effort to ensure that the technical details, recommendations and other information contained in this drawing are accurate and represent our knowledge and experience at the time of design and publication. Ardex reserves the right to change the information without prior notice. Ardex provides the information in good faith with no representations or warranties (whether implied or otherwise), and will not be liable for any losses or damages (whether direct, indirect or consequential) whatsoever, whether in contract, negligence or any other action, arising out of or in connection with the use, or inability to use, the information. It is your responsibility to ensure that our products are used only for the purposes for which they are intended and are used in accordance with any applicable specifications, guidelines, standards, codes of practice, regulations and laws. The supply of our products and services are also subject to certain terms, warranties and exclusions which are available on request.

DWG NO. **AS-11(X)**

DATE 21.08.2022

SCALE @ 1:410





WPM 3000X

FLUSH PILE

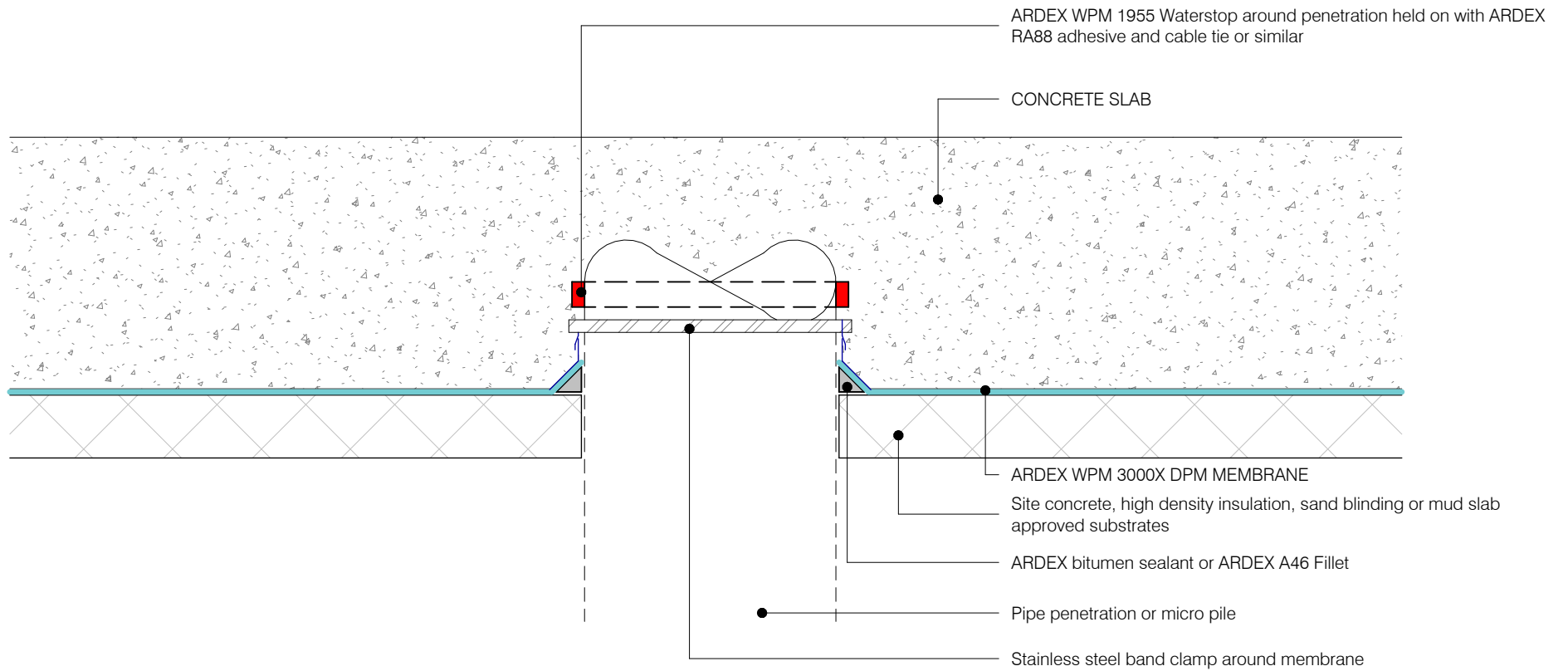
DWG NO. **AS-12(X)**

DATE 21.08.2022

SCALE @ 1:10



Disclaimer: Ardex makes every reasonable effort to ensure that the technical details, recommendations and other information contained in this drawing are accurate and represent our knowledge and experience at the time of design and publication. Ardex reserves the right to change the information without prior notice. Ardex provides the information in good faith with no representations or warranties (whether implied or otherwise), and will not be liable for any losses or damages (whether direct, indirect or consequential) whatsoever, whether in contract, negligence or any other action, arising out of or in connection with the use, or inability to use, the information. It is your responsibility to ensure that our products are used only for the purposes for which they are intended and are used in accordance with any applicable specifications, guidelines, standards, codes of practice, regulations and laws. The supply of our products and services are also subject to certain terms, warranties and exclusions which are available on request.



ARDEX 3000X

Disclaimer: Ardex makes every reasonable effort to ensure that the technical details, recommendations and other information contained in this drawing are accurate and represent our knowledge and experience at the time of design and publication. Ardex reserves the right to change the information without prior notice. Ardex provides the information in good faith with no representations or warranties (whether implied or otherwise), and will not be liable for any losses or damages (whether direct, indirect or consequential) whatsoever, whether in contract, negligence or any other action, arising out of or in connection with the use, or inability to use, the information.

It is your responsibility to ensure that our products are used only for the purposes for which they are intended and are used in accordance with any applicable specifications, guidelines, standards, codes of practice, regulations and laws. The supply of our products and services are also subject to certain terms, warranties and exclusions which are available on request.

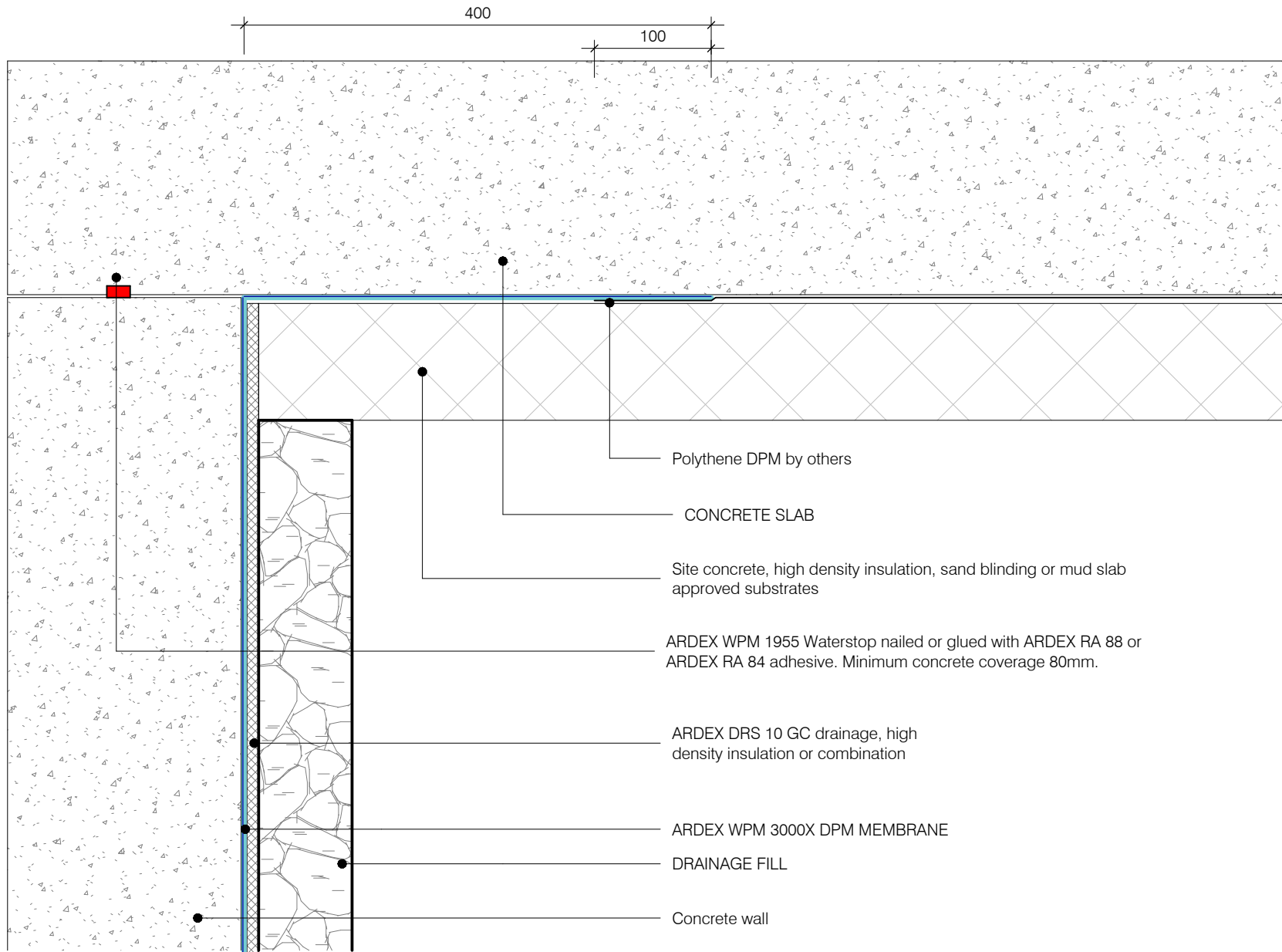
SLAB PENETRATION
SHEET TITLE

DWG NO. AS-13(X)

DATE 21.08.2022

SCALE 1 : 5 @ A4





ARDEX 3000X

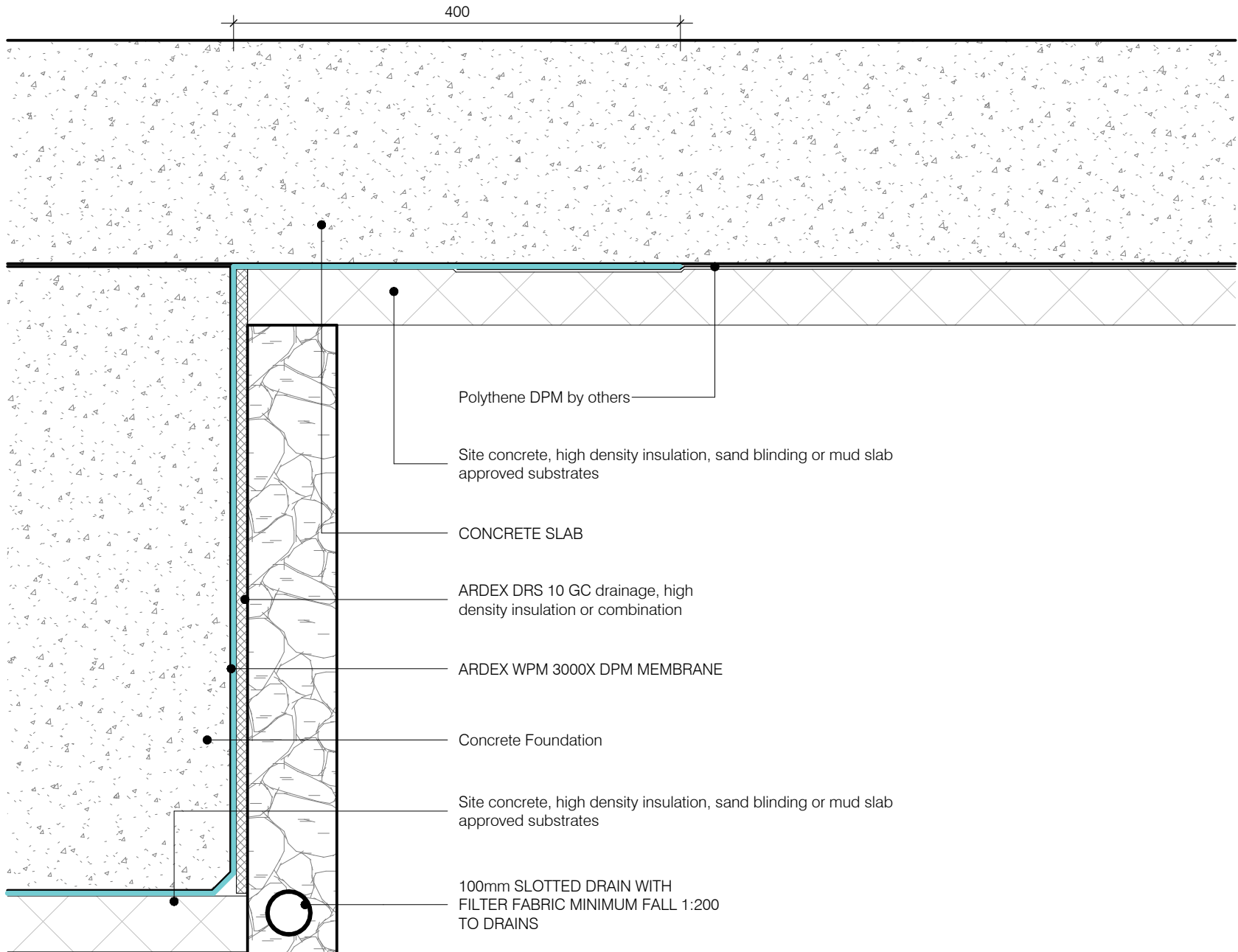
Disclaimer: Ardex makes every reasonable effort to ensure that the technical details, recommendations and other information contained in this drawing are accurate and represent our knowledge and experience at the time of design and publication. Ardex reserves the right to change the information without prior notice. Ardex provides the information in good faith with no representations or warranties (whether implied or otherwise), and will not be liable for any losses or damages (whether direct, indirect or consequential) whatsoever, whether in contract, negligence or any other action, arising out of or in connection with the use, or inability to use, the information.

It is your responsibility to ensure that our products are used only for the purposes for which they are intended and are used in accordance with any applicable specifications, guidelines, standards, codes of practice, regulations and laws. The supply of our products and services are also subject to certain terms, warranties and exclusions which are available on request.

WALL TO SLAB DPM
SHEET TITLE

DWG NO. AS-14(X)
DATE 21.08.2022
SCALE 1 : 5 @ A4





ARDEX 3000X

Disclaimer: Ardex makes every reasonable effort to ensure that the technical details, recommendations and other information contained in this drawing are accurate and represent our knowledge and experience at the time of design and publication. Ardex reserves the right to change the information without prior notice. Ardex provides the information in good faith with no representations or warranties (whether implied or otherwise), and will not be liable for any losses or damages (whether direct, indirect or consequential) whatsoever, whether in contract, negligence or any other action, arising out of or in connection with the use, or inability to use, the information.

It is your responsibility to ensure that our products are used only for the purposes for which they are intended and are used in accordance with any applicable specifications, guidelines, standards, codes of practice, regulations and laws. The supply of our products and services are also subject to certain terms, warranties and exclusions which are available on request.

FOUNDATION TO SLAB DPM
SHEET TITLE

DWG NO. AS-15(X)
DATE 21.08.2022
SCALE 1 : 5 @ A4

