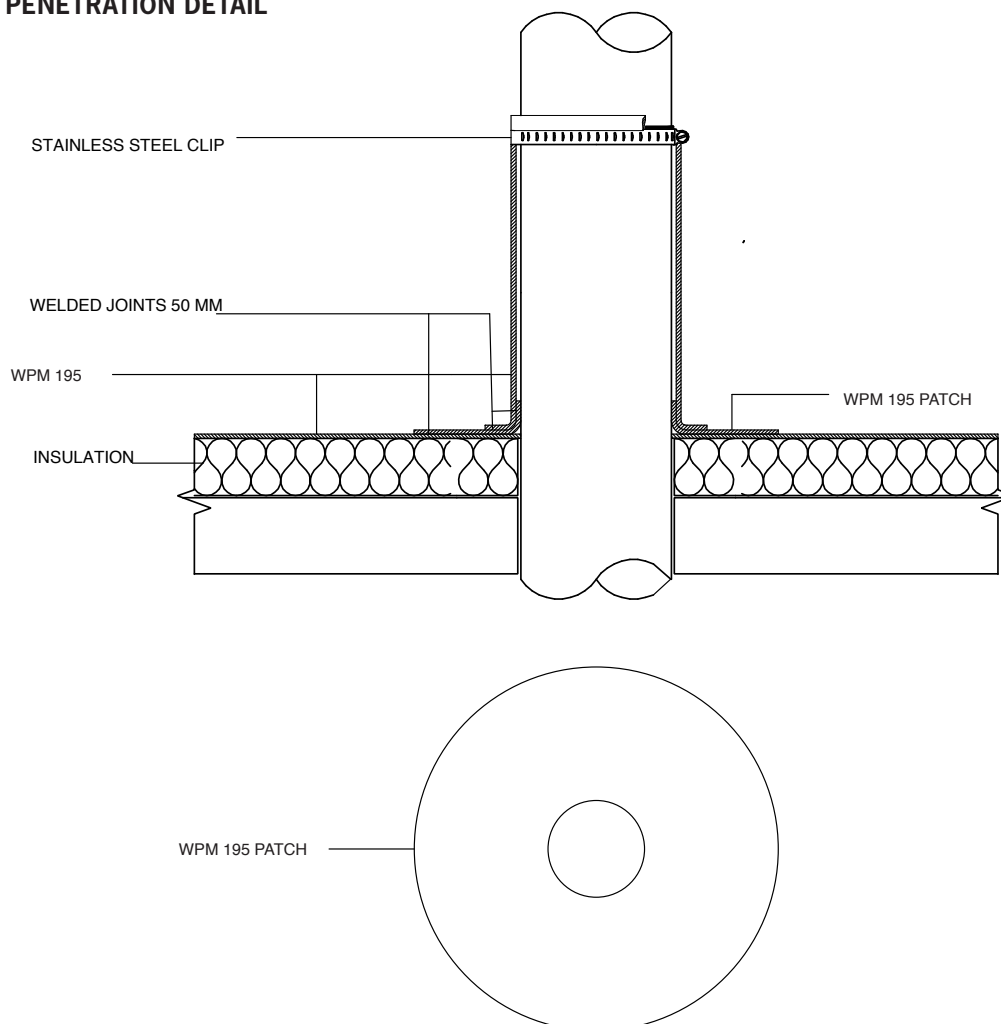


ARDEX WPM 195

SBS Torch-Applied Tanking Membrane

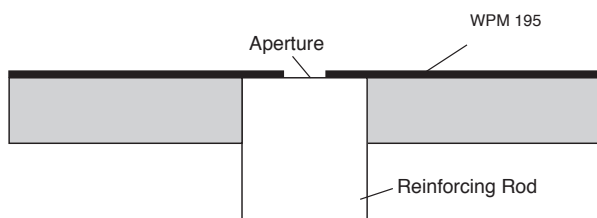
PIPE PENETRATION DETAIL



FLASHING - REINFORCING RODS

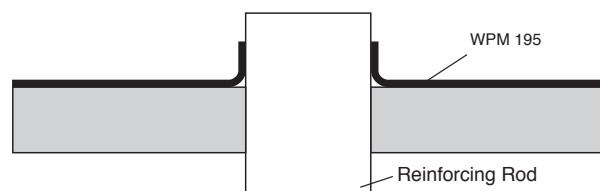
STEP 1

Cut smaller diameter hole than Reinforcing Rod.



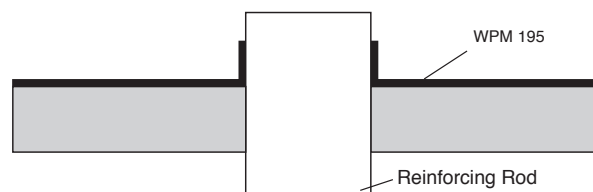
STEP 2

Rod is raised through smaller diameter hole in WPM 195, forcing edge upwards to create



STEP 3

Roll Patch down to eliminate void.



STEP 4

Form upstand with WPM 195 to rod.

