

ARDEX MEMBRANE DRAWING LIST

DRAWING NO.	SHEET TITLE	DATE
AWR-00	DRAWING LIST	01/07/2022
AWR-01	THRESHOLD AT OPENING - REBATED	01/07/2022
AWR-02	THRESHOLD AT OPENING	30/06/2022
AWR-03	BOTTOM PLATE WALL - DIRECT FIXED	27/06/2022
AWR-04	BOTTOM PLATE WALL - CAVITY	30/06/2022
AWR-05	INTERNAL GUTTER	01/07/2022
AWR-06	INTERNAL GUTTER	01/07/2022
AWR-07	BOX GUTTER & PARAPET DOWNTURN	01/07/2022
AWR-08	PREFORMED OVERFLOW	01/07/2022
AWR-09	SCUPPER OUTLET	01/07/2022
AWR-10	EAVES & VERGE	27/06/2022
AWR-11	SPOUTING	01/07/2022
AWR-12	ROOF PENETRATION	01/07/2022
AWR-13	FLASHING INTO CONCRETE WALLS - CHASE WITH COVER	01/07/2022
AWR-14	FLASHING INTO CONCRETE WALLS - MECHANICAL	01/07/2022
AWR-15	FLASHING INTO CONCRETE WALLS - FLASHING	01/07/2022
AWR-16	PLANT EQUIPMENT SUPPORTS	01/07/2022
AWR-17	PIPE PENETRATION	01/07/2022
AWR-18	WARM ROOF SYSTEM - CONCRETE	01/07/2022
AWR-19	WARM ROOF SYSTEM - METAL DECK	01/07/2022
AWR-20	WARM ROOF SYSTEM - PLYWOOD	01/07/2022

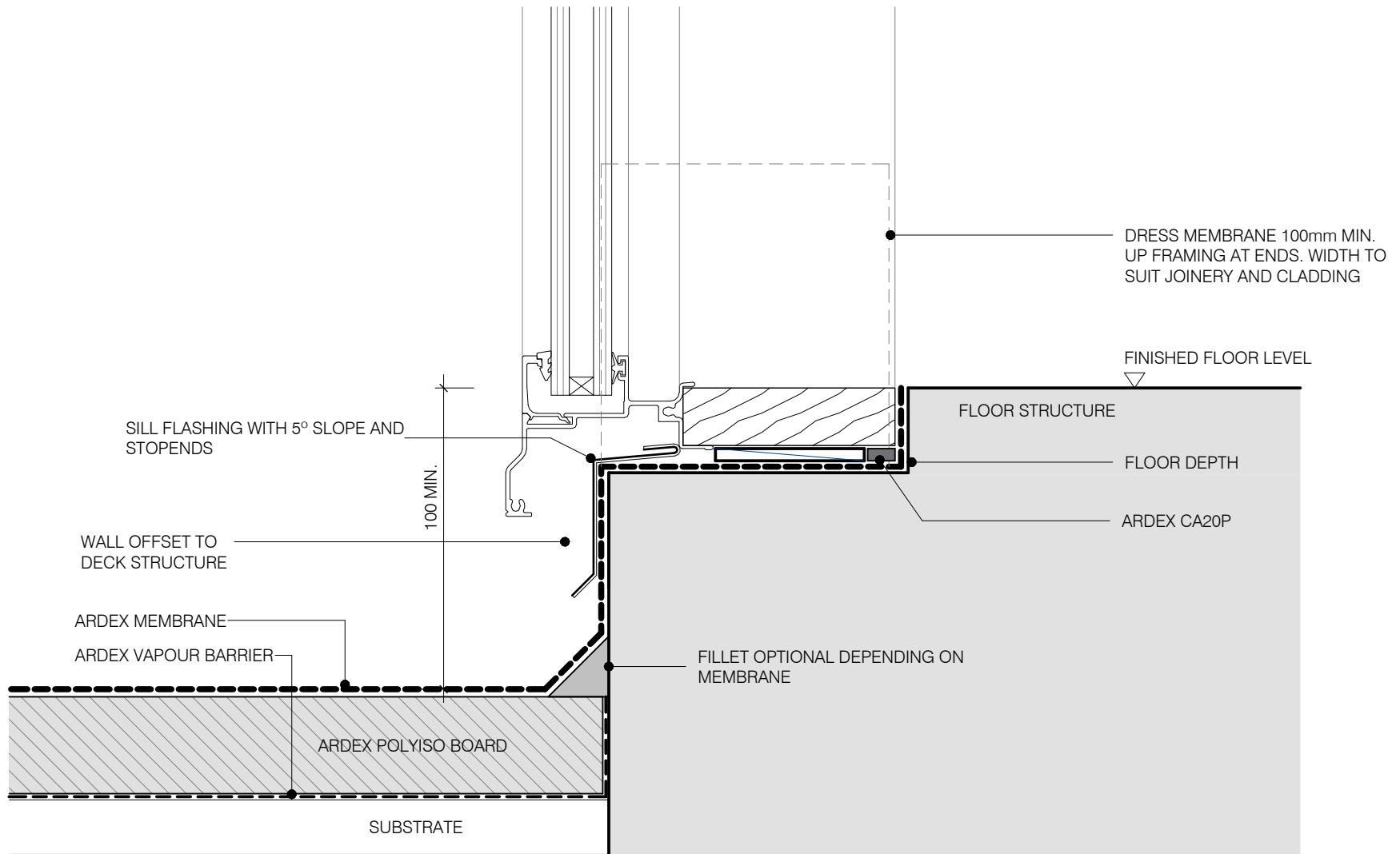
ARDEX WARM ROOFING

Disclaimer: Ardex makes every reasonable effort to ensure that the technical details, recommendations and other information contained in this drawing are accurate and represent our knowledge and experience at the time of design and publication. Ardex reserves the right to change the information without prior notice. Ardex provides the information in good faith with no representations or warranties (whether implied or otherwise), and will not be liable for any losses or damages (whether direct, indirect or consequential) whatsoever, whether in contract, negligence or any other action, arising out of or in connection with the use, or inability to use, the information. It is your responsibility to ensure that our products are used only for the purposes for which they are intended and are used in accordance with any applicable specifications, guidelines, standards, codes of practice, regulations and laws. The supply of our products and services are also subject to certain terms, warranties and exclusions which are available on request.

DRAWING LIST
SHEET TITLE

DWG NO.	AWR-00
DATE	01/07/2022
SCALE	NOT TO SCALE





ARDEX WARM ROOFING

THRESHOLD AT OPENING - REBATED SHEET TITLE

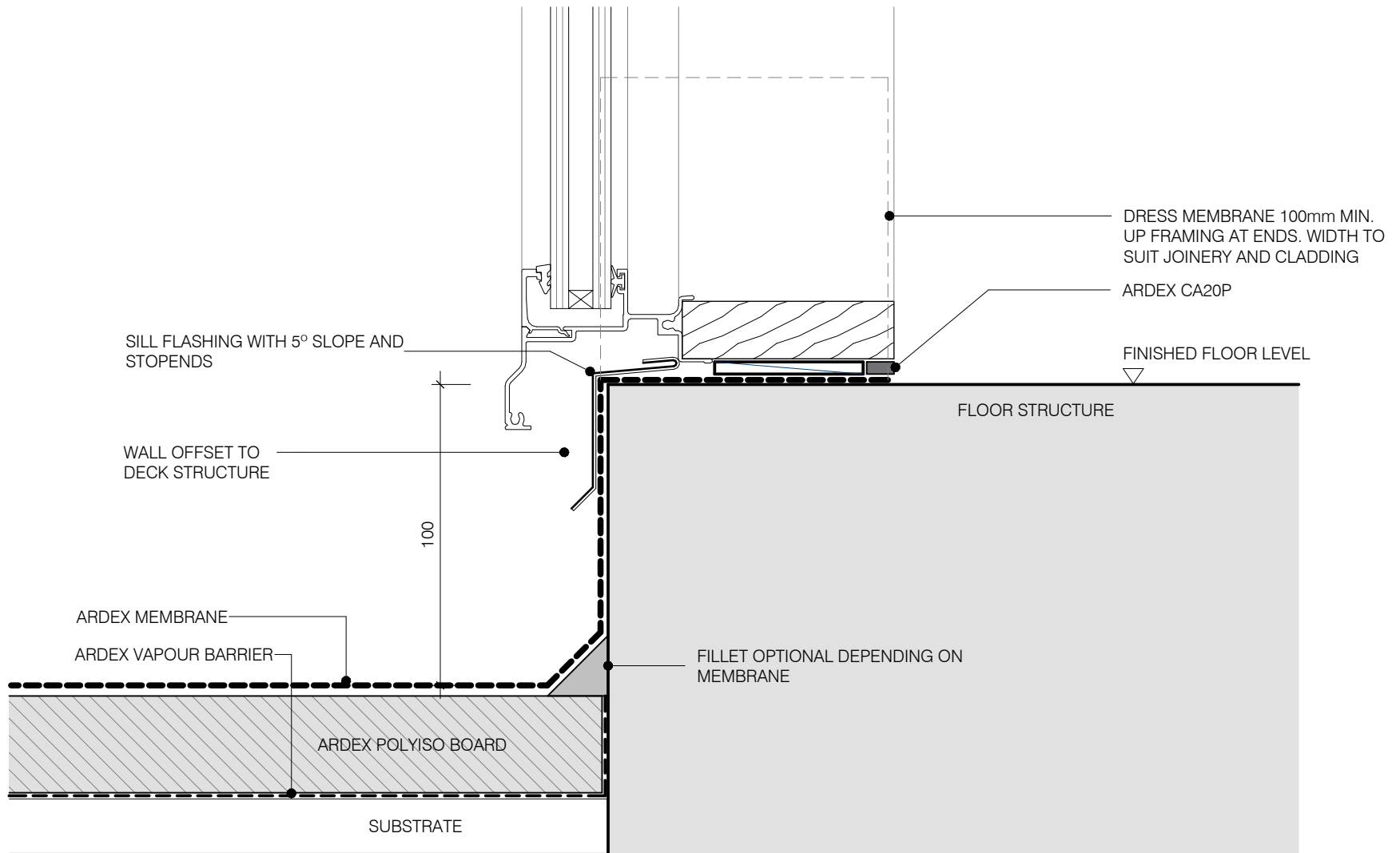
Disclaimer: Ardex makes every reasonable effort to ensure that the technical details, recommendations and other information contained in this drawing are accurate and represent our knowledge and experience at the time of design and publication. Ardex reserves the right to change the information without prior notice. Ardex provides the information in good faith with no representations or warranties (whether implied or otherwise), and will not be liable for any losses or damages (whether direct, indirect or consequential) whatsoever, whether in contract, negligence or any other action, arising out of or in connection with the use, or inability to use, the information. It is your responsibility to ensure that our products are used only for the purposes for which they are intended and are used in accordance with any applicable specifications, guidelines, standards, codes of practice, regulations and laws. The supply of our products and services are also subject to certain terms, warranties and exclusions which are available on request.

DWG NO. **AWR-01**

DATE 01/07/2022

SCALE 1 : 2 @ A4





ARDEX WARM ROOFING

THRESHOLD AT OPENING

SHEET TITLE

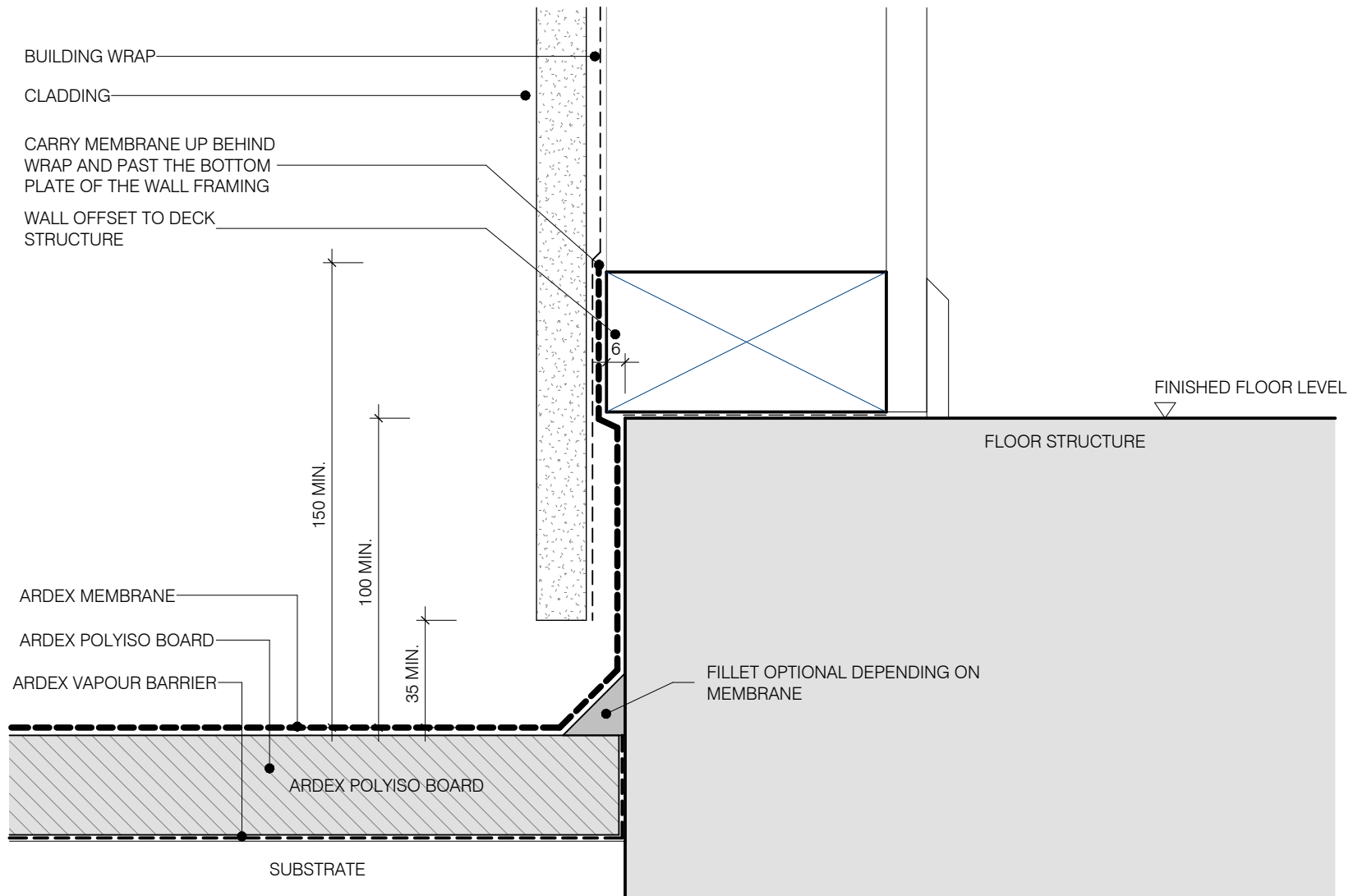
DWG NO. **AWR-02**

DATE 30/06/2022

SCALE 1 : 2 @ A4



Disclaimer: Ardex makes every reasonable effort to ensure that the technical details, recommendations and other information contained in this drawing are accurate and represent our knowledge and experience at the time of design and publication. Ardex reserves the right to change the information without prior notice. Ardex provides the information in good faith with no representations or warranties (whether implied or otherwise), and will not be liable for any losses or damages (whether direct, indirect or consequential) whatsoever, whether in contract, negligence or any other action, arising out of or in connection with the use, or inability to use, the information. It is your responsibility to ensure that our products are used only for the purposes for which they are intended and are used in accordance with any applicable specifications, guidelines, standards, codes of practice, regulations and laws. The supply of our products and services are also subject to certain terms, warranties and exclusions which are available on request.



ARDEX WARM ROOFING

BOTTOM PLATE WALL - DIRECT FIXED SHEET TITLE

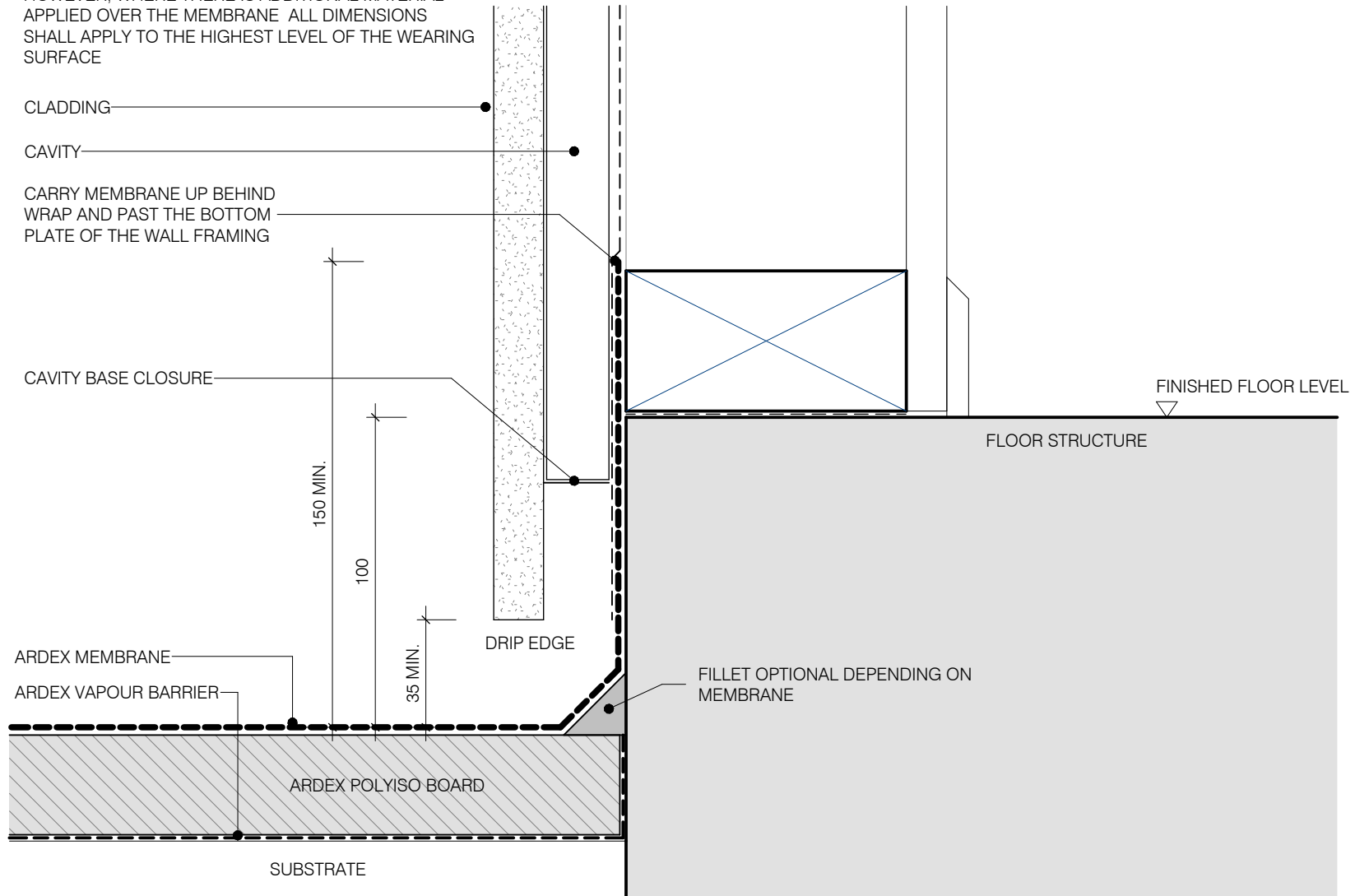
DWG NO. **AWR-03**
 DATE 27/06/2022
 SCALE 1 : 2 @ A4



Disclaimer: Ardex makes every reasonable effort to ensure that the technical details, recommendations and other information contained in this drawing are accurate and represent our knowledge and experience at the time of design and publication. Ardex reserves the right to change the information without prior notice. Ardex provides the information in good faith with no representations or warranties (whether implied or otherwise), and will not be liable for any losses or damages (whether direct, indirect or consequential) whatsoever, whether in contract, negligence or any other action, arising out of or in connection with the use, or inability to use, the information. It is your responsibility to ensure that our products are used only for the purposes for which they are intended and are used in accordance with any applicable specifications, guidelines, standards, codes of practice, regulations and laws. The supply of our products and services are also subject to certain terms, warranties and exclusions which are available on request.

NOTE:

- 1). INTERNAL CORNERS TO BE FORMED AS PER DETAIL
 - 2). DIMENSIONS ARE SHOWN TO MEMBRANE.
- HOWEVER, WHERE THERE IS ADDITIONAL MATERIAL APPLIED OVER THE MEMBRANE ALL DIMENSIONS SHALL APPLY TO THE HIGHEST LEVEL OF THE WEARING SURFACE



ARDEX WARM ROOFING

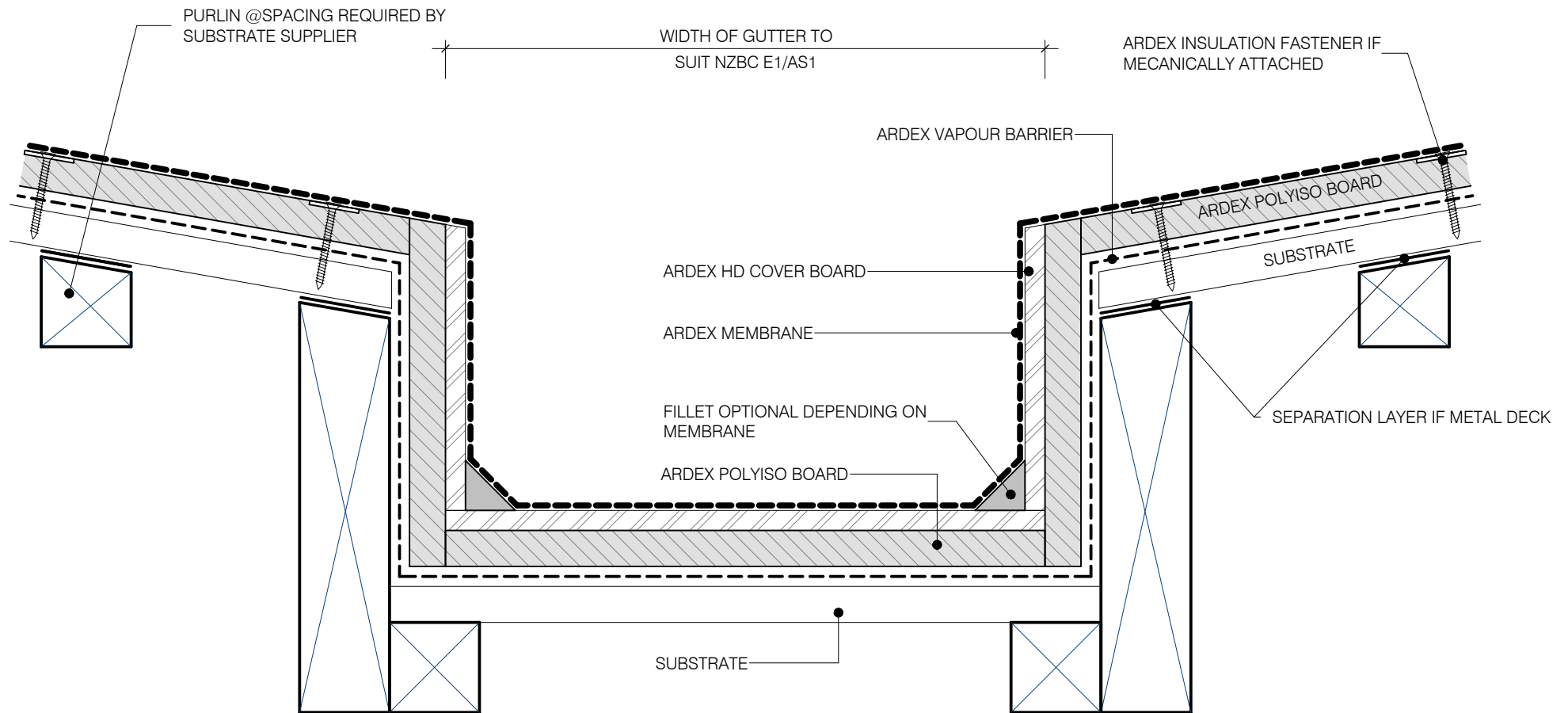
BOTTOM PLATE WALL - CAVITY

SHEET TITLE

DWG NO. **AWR-04**
 DATE 30/06/2022
 SCALE 1 : 2 @ A4



Disclaimer: Ardex makes every reasonable effort to ensure that the technical details, recommendations and other information contained in this drawing are accurate and represent our knowledge and experience at the time of design and publication. Ardex reserves the right to change the information without prior notice. Ardex provides the information in good faith with no representations or warranties (whether implied or otherwise), and will not be liable for any losses or damages (whether direct, indirect or consequential) whatsoever, whether in contract, negligence or any other action, arising out of or in connection with the use, or inability to use, the information. It is your responsibility to ensure that our products are used only for the purposes for which they are intended and are used in accordance with any applicable specifications, guidelines, standards, codes of practice, regulations and laws. The supply of our products and services are also subject to certain terms, warranties and exclusions which are available on request.



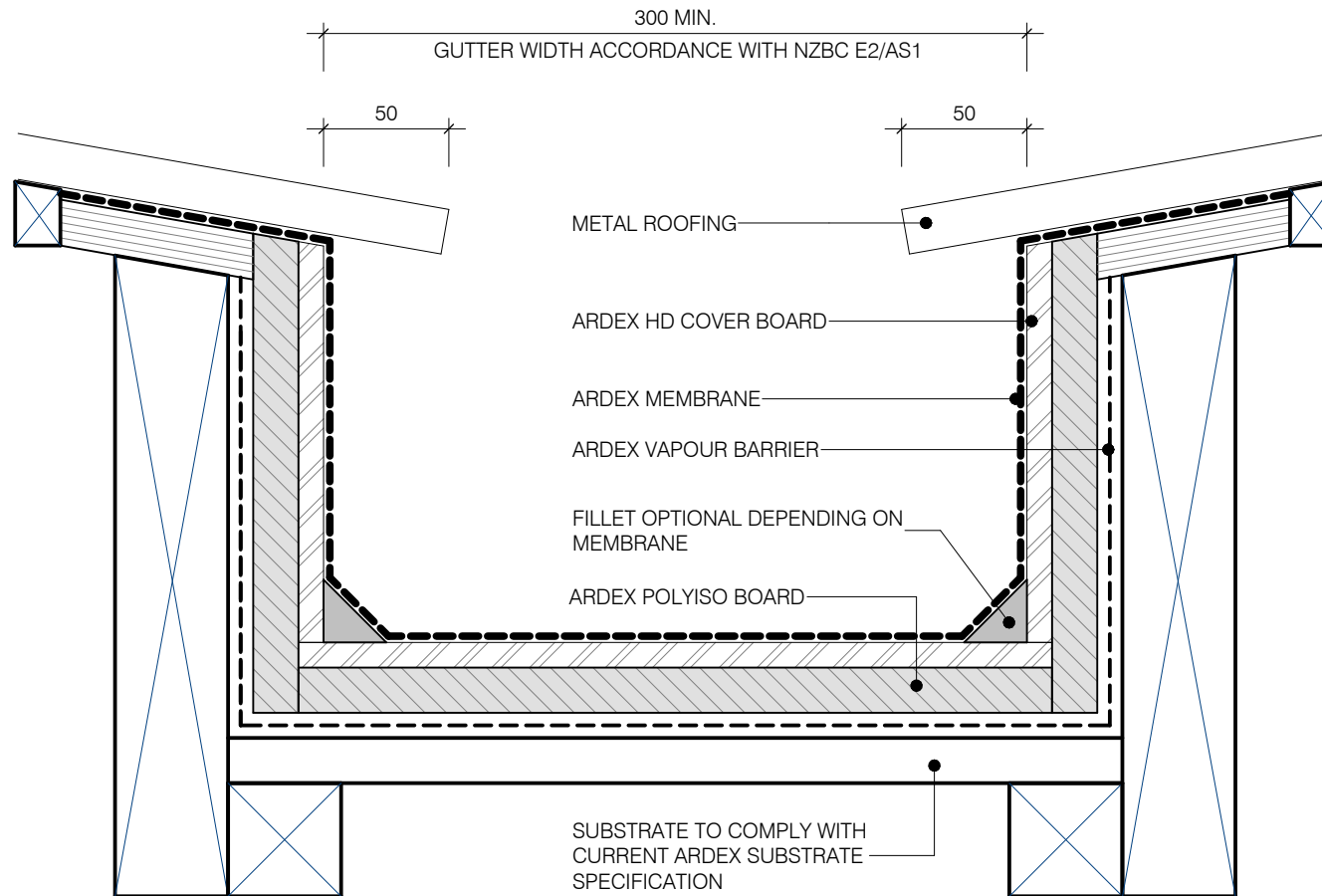
ARDEX WARM ROOFING

INTERNAL GUTTER SHEET TITLE

Disclaimer: Ardex makes every reasonable effort to ensure that the technical details, recommendations and other information contained in this drawing are accurate and represent our knowledge and experience at the time of design and publication. Ardex reserves the right to change the information without prior notice. Ardex provides the information in good faith with no representations or warranties (whether implied or otherwise), and will not be liable for any losses or damages (whether direct, indirect or consequential) whatsoever, whether in contract, negligence or any other action, arising out of or in connection with the use, or inability to use, the information. It is your responsibility to ensure that our products are used only for the purposes for which they are intended and are used in accordance with any applicable specifications, guidelines, standards, codes of practice, regulations and laws. The supply of our products and services are also subject to certain terms, warranties and exclusions which are available on request.

DWG NO. **AWR-05**
 DATE 01/07/2022
 SCALE 1 : 3 @ A4





ARDEX WARM ROOFING

INTERNAL GUTTER SHEET TITLE

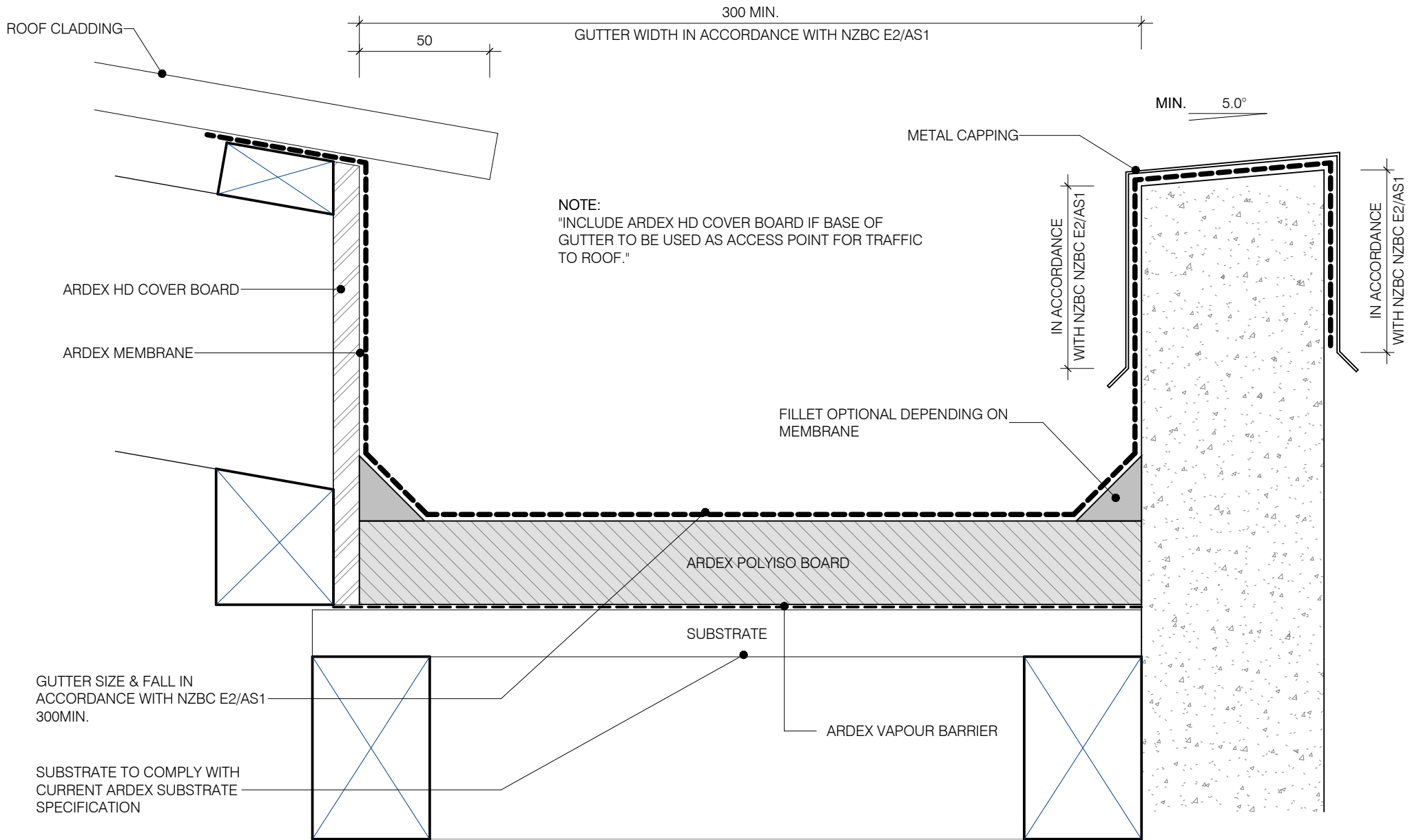
Disclaimer: Ardex makes every reasonable effort to ensure that the technical details, recommendations and other information contained in this drawing are accurate and represent our knowledge and experience at the time of design and publication. Ardex reserves the right to change the information without prior notice. Ardex provides the information in good faith with no representations or warranties (whether implied or otherwise), and will not be liable for any losses or damages (whether direct, indirect or consequential) whatsoever, whether in contract, negligence or any other action, arising out of or in connection with the use, or inability to use, the information. It is your responsibility to ensure that our products are used only for the purposes for which they are intended and are used in accordance with any applicable specifications, guidelines, standards, codes of practice, regulations and laws. The supply of our products and services are also subject to certain terms, warranties and exclusions which are available on request.

DWG NO. **AWR-06**

DATE 01/07/2022

SCALE 1 : 3 @ A4





ARDEX WARM ROOFING

BOX GUTTER & PARAPET DOWNTURN SHEET TITLE

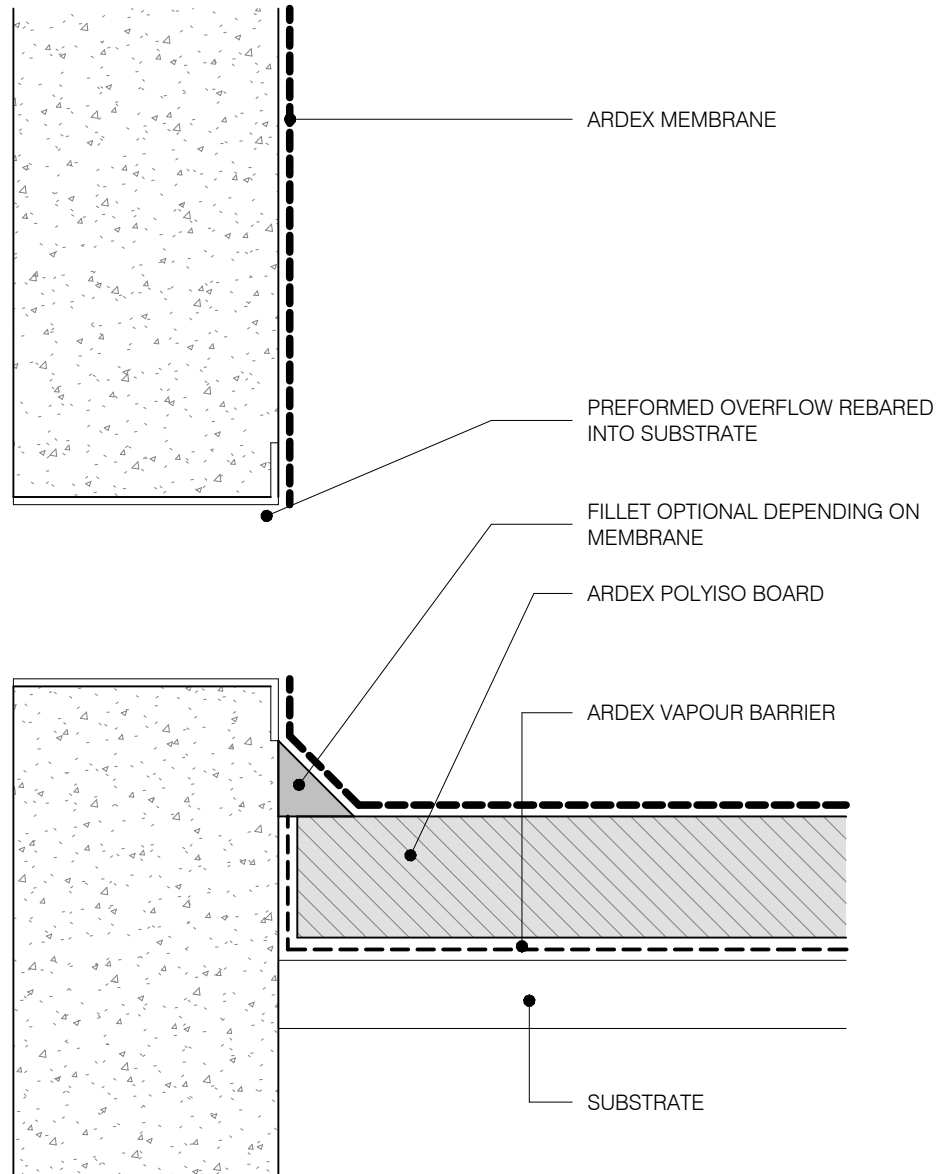
DWG NO. **AWR-07**

DATE 01/07/2022

SCALE 1 : 2 @ A4



Disclaimer: Ardex makes every reasonable effort to ensure that the technical details, recommendations and other information contained in this drawing are accurate and represent our knowledge and experience at the time of design and publication. Ardex reserves the right to change the information without prior notice. Ardex provides the information in good faith with no representations or warranties (whether implied or otherwise), and will not be liable for any losses or damages (whether direct, indirect or consequential) whatsoever, whether in contract, negligence or any other action, arising out of or in connection with the use, or inability to use, the information. It is your responsibility to ensure that our products are used only for the purposes for which they are intended and are used in accordance with any applicable specifications, guidelines, standards, codes of practice, regulations and laws. The supply of our products and services are also subject to certain terms, warranties and exclusions which are available on request.



ARDEX WARM ROOFING

PREFORMED OVERFLOW SHEET TITLE

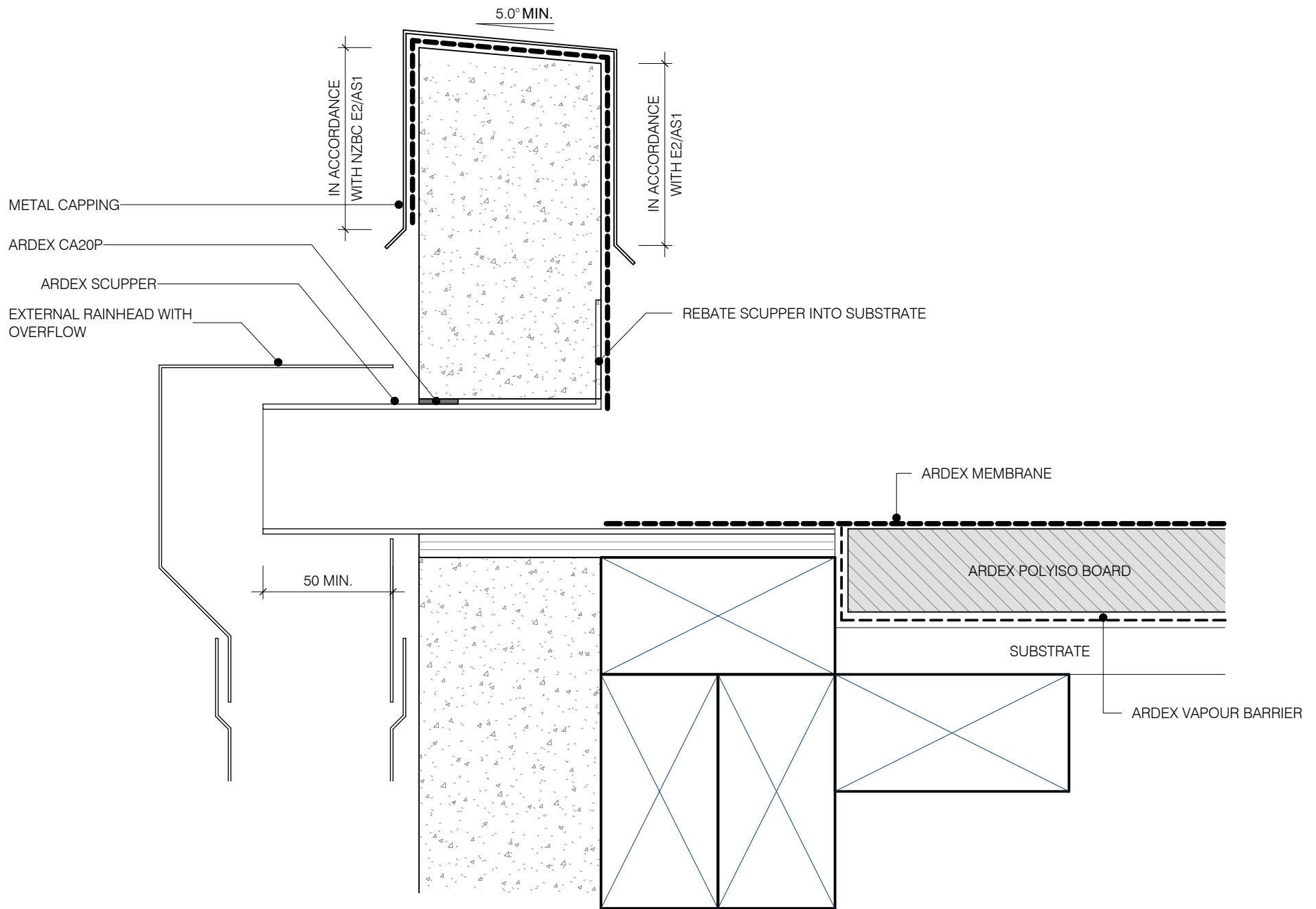
Disclaimer: Ardex makes every reasonable effort to ensure that the technical details, recommendations and other information contained in this drawing are accurate and represent our knowledge and experience at the time of design and publication. Ardex reserves the right to change the information without prior notice. Ardex provides the information in good faith with no representations or warranties (whether implied or otherwise), and will not be liable for any losses or damages (whether direct, indirect or consequential) whatsoever, whether in contract, negligence or any other action, arising out of or in connection with the use, or inability to use, the information. It is your responsibility to ensure that our products are used only for the purposes for which they are intended and are used in accordance with any applicable specifications, guidelines, standards, codes of practice, regulations and laws. The supply of our products and services are also subject to certain terms, warranties and exclusions which are available on request.

DWG NO. **AWR-08**

DATE 01/07/2022

SCALE 1 : 2 @ A4





ARDEX WARM ROOFING

SCUPPER OUTLET SHEET TITLE

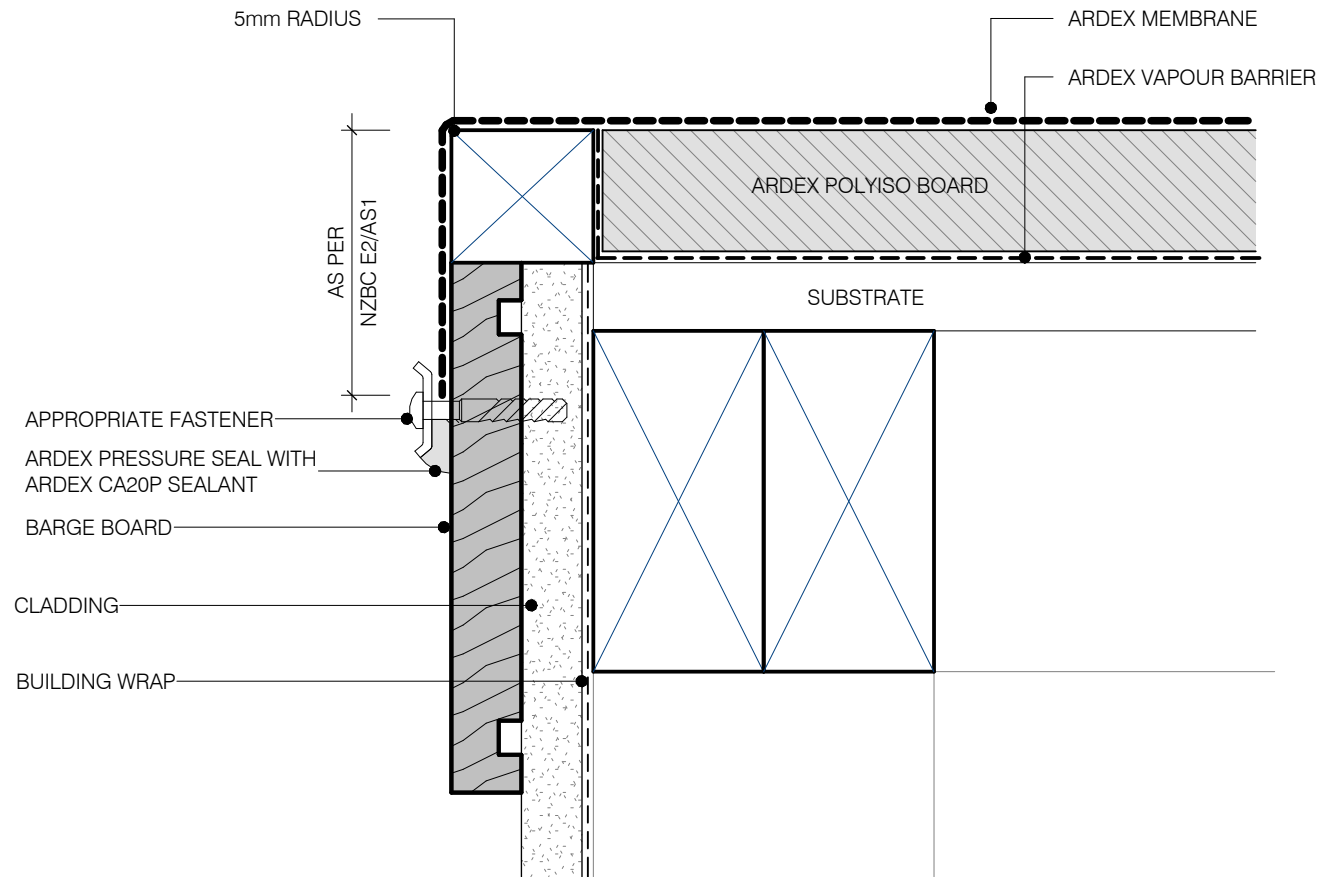
DWG NO. **AWR-09**

DATE 01/07/2022

SCALE 1 : 2 @ A4



Disclaimer: Ardex makes every reasonable effort to ensure that the technical details, recommendations and other information contained in this drawing are accurate and represent our knowledge and experience at the time of design and publication. Ardex reserves the right to change the information without prior notice. Ardex provides the information in good faith with no representations or warranties (whether implied or otherwise), and will not be liable for any losses or damages (whether direct, indirect or consequential) whatsoever, whether in contract, negligence or any other action, arising out of or in connection with the use, or inability to use, the information. It is your responsibility to ensure that our products are used only for the purposes for which they are intended and are used in accordance with any applicable specifications, guidelines, standards, codes of practice, regulations and laws. The supply of our products and services are also subject to certain terms, warranties and exclusions which are available on request.



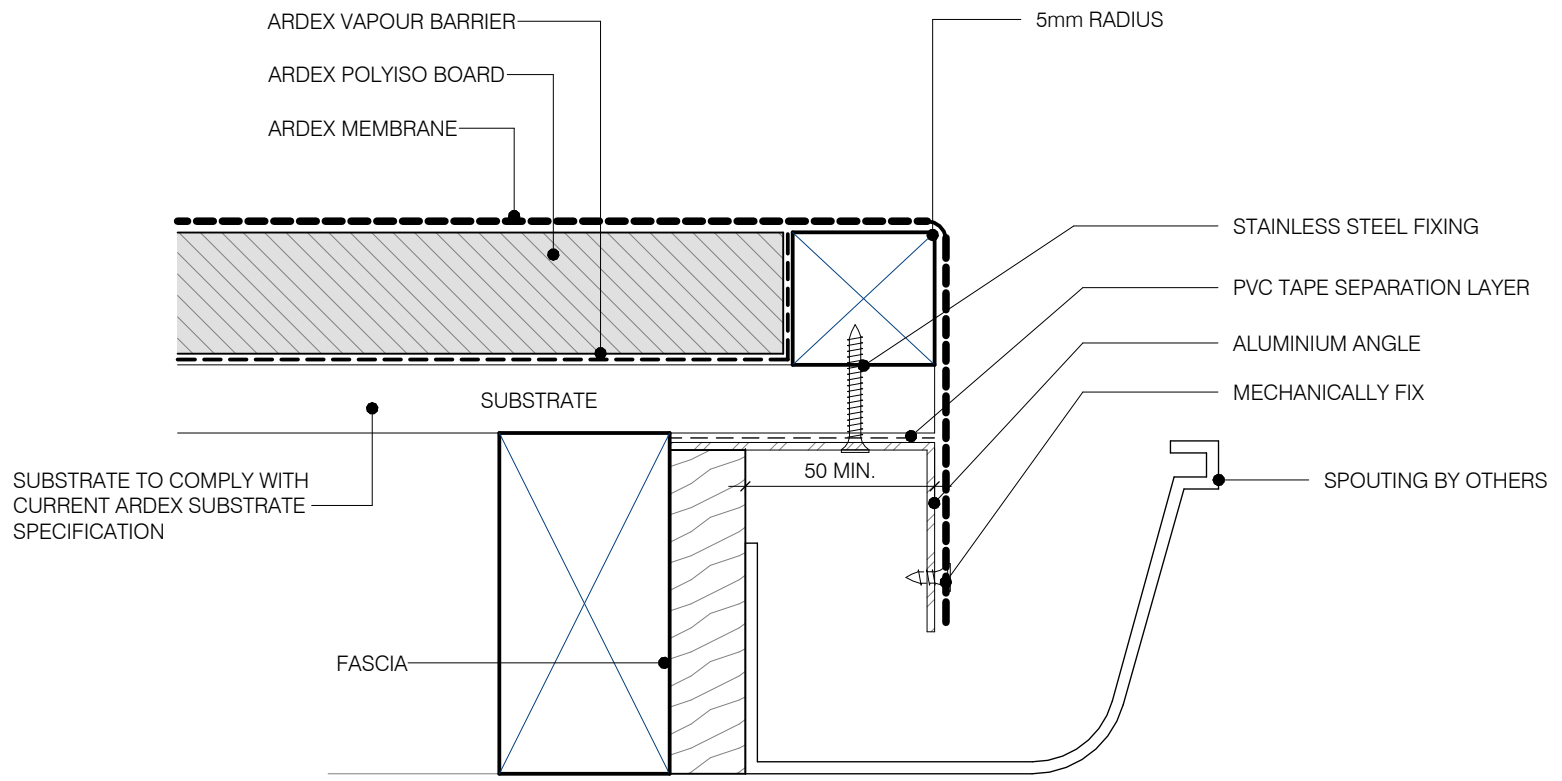
ARDEX WARM ROOFING

EAVES & VERGE SHEET TITLE

DWG NO. **AWR-10**
 DATE 27/06/2022
 SCALE 1 : 2 @ A4



Disclaimer: Ardex makes every reasonable effort to ensure that the technical details, recommendations and other information contained in this drawing are accurate and represent our knowledge and experience at the time of design and publication. Ardex reserves the right to change the information without prior notice. Ardex provides the information in good faith with no representations or warranties (whether implied or otherwise), and will not be liable for any losses or damages (whether direct, indirect or consequential) whatsoever, whether in contract, negligence or any other action, arising out of or in connection with the use, or inability to use, the information. It is your responsibility to ensure that our products are used only for the purposes for which they are intended and are used in accordance with any applicable specifications, guidelines, standards, codes of practice, regulations and laws. The supply of our products and services are also subject to certain terms, warranties and exclusions which are available on request.



ARDEX WARM ROOFING

SPOUTING SHEET TITLE

DWG NO. **AWR-11**

DATE 01/07/2022

SCALE 1 : 2 @ A4



Disclaimer: Ardex makes every reasonable effort to ensure that the technical details, recommendations and other information contained in this drawing are accurate and represent our knowledge and experience at the time of design and publication. Ardex reserves the right to change the information without prior notice. Ardex provides the information in good faith with no representations or warranties (whether implied or otherwise), and will not be liable for any losses or damages (whether direct, indirect or consequential) whatsoever, whether in contract, negligence or any other action, arising out of or in connection with the use, or inability to use, the information. It is your responsibility to ensure that our products are used only for the purposes for which they are intended and are used in accordance with any applicable specifications, guidelines, standards, codes of practice, regulations and laws. The supply of our products and services are also subject to certain terms, warranties and exclusions which are available on request.

NOTE:

- 1). FOR MAX PENETRATION SIZE 1200x1200mm
- 2). EXTERNAL CORNERS TO BE FORMED AS SHOWN

OVER FLASHING FROM ROOFLIGHT,
VENT ETC

ARDEX MEMBRANE

ARDEX HD COVER BOARD

FILLET OPTIONAL DEPENDING ON
MEMBRANE

ARDEX POLYISO BOARD

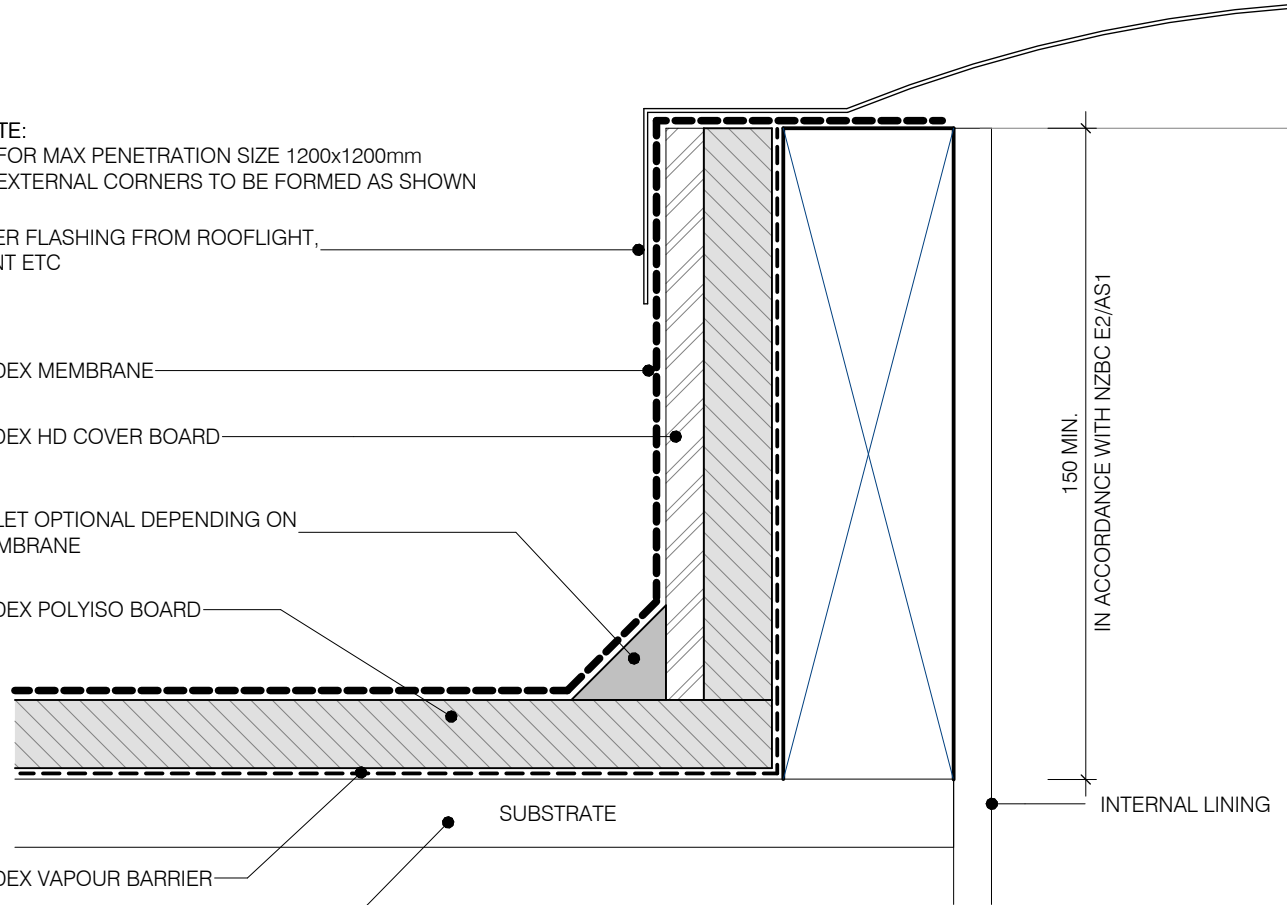
SUBSTRATE

ARDEX VAPOUR BARRIER

SUBSTRATE TO COMPLY WITH
CURRENT ARDEX SUBSTRATE
SPECIFICATION

150 MIN.
IN ACCORDANCE WITH NZBC E2/AS1

INTERNAL LINING



ARDEX WARM ROOFING

ROOF PENETRATION SHEET TITLE

DWG NO.

AWR-12

DATE

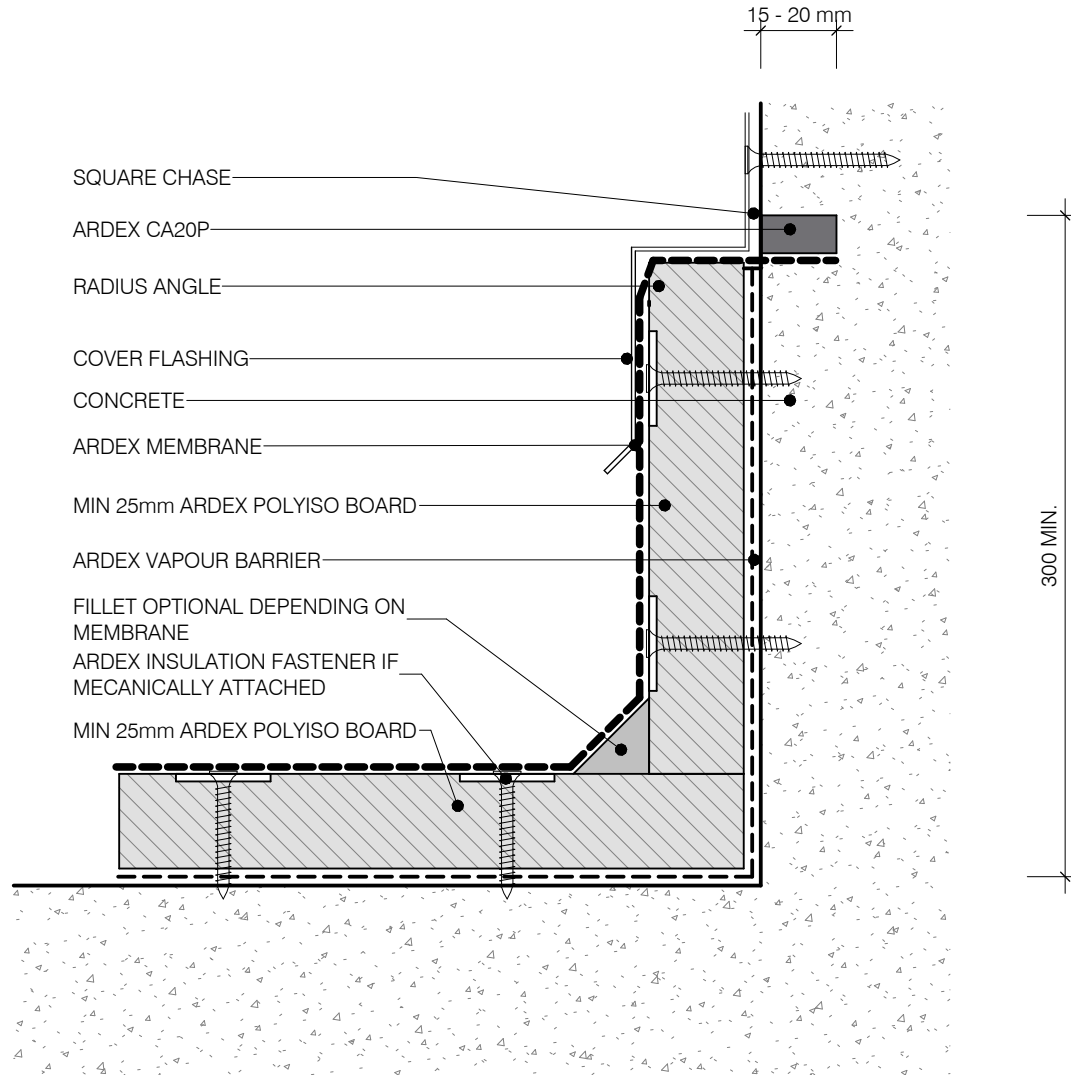
01/07/2022

SCALE

1 : 2 @ A4



Disclaimer: Ardex makes every reasonable effort to ensure that the technical details, recommendations and other information contained in this drawing are accurate and represent our knowledge and experience at the time of design and publication. Ardex reserves the right to change the information without prior notice. Ardex provides the information in good faith with no representations or warranties (whether implied or otherwise), and will not be liable for any losses or damages (whether direct, indirect or consequential) whatsoever, whether in contract, negligence or any other action, arising out of or in connection with the use, or inability to use, the information. It is your responsibility to ensure that our products are used only for the purposes for which they are intended and are used in accordance with any applicable specifications, guidelines, standards, codes of practice, regulations and laws. The supply of our products and services are also subject to certain terms, warranties and exclusions which are available on request.



NOTE:
 ARDEX MEMBRANE IS ADHERED INTO SQUARE CHASE AND FINISHED WITH ARDEX CA20P SEALANT

ARDEX WARM ROOFING

FLASHING INTO CONCRETE WALLS - CHASE WITH COVER

SHEET TITLE

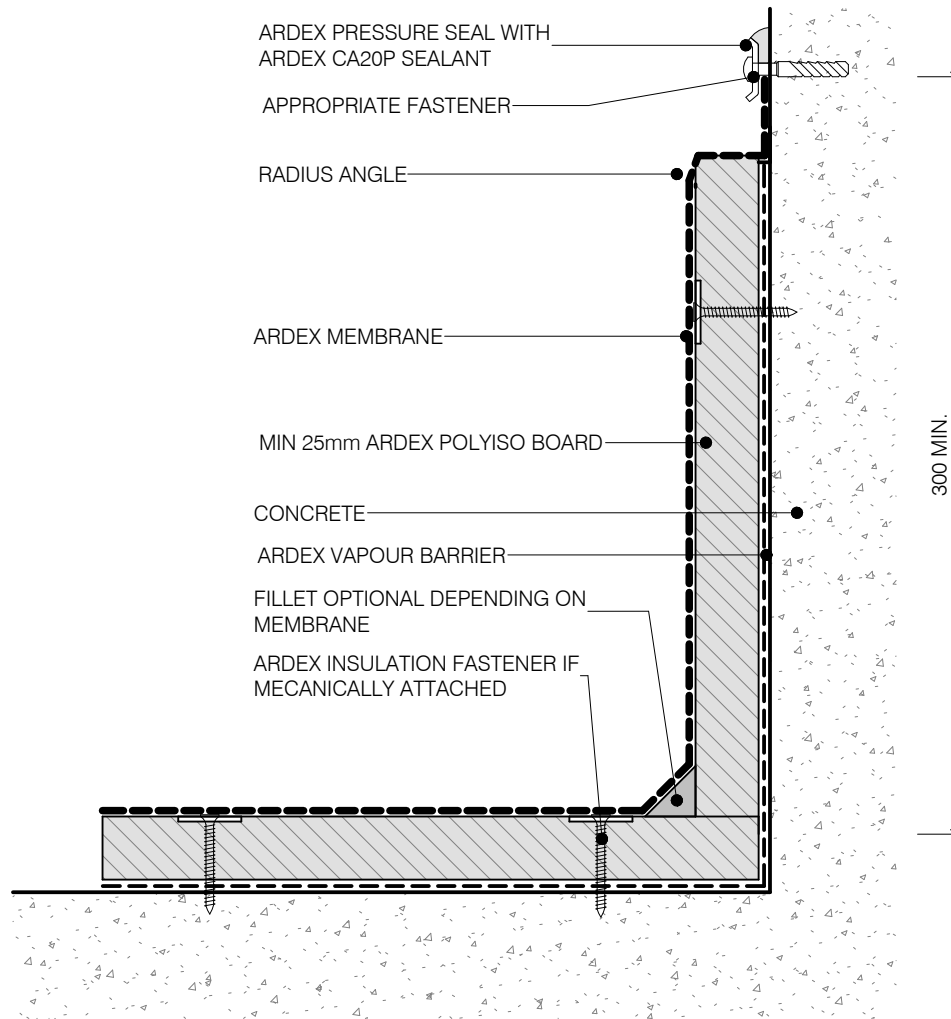
DWG NO. **AWR-13**

DATE 01/07/2022

SCALE 1 : 2 @ A4



Disclaimer: Ardex makes every reasonable effort to ensure that the technical details, recommendations and other information contained in this drawing are accurate and represent our knowledge and experience at the time of design and publication. Ardex reserves the right to change the information without prior notice. Ardex provides the information in good faith with no representations or warranties (whether implied or otherwise), and will not be liable for any losses or damages (whether direct, indirect or consequential) whatsoever, whether in contract, negligence or any other action, arising out of or in connection with the use, or inability to use, the information. It is your responsibility to ensure that our products are used only for the purposes for which they are intended and are used in accordance with any applicable specifications, guidelines, standards, codes of practice, regulations and laws. The supply of our products and services are also subject to certain terms, warranties and exclusions which are available on request.



ARDEX WARM ROOFING

Disclaimer: Ardex makes every reasonable effort to ensure that the technical details, recommendations and other information contained in this drawing are accurate and represent our knowledge and experience at the time of design and publication. Ardex reserves the right to change the information without prior notice. Ardex provides the information in good faith with no representations or warranties (whether implied or otherwise), and will not be liable for any losses or damages (whether direct, indirect or consequential) whatsoever, whether in contract, negligence or any other action, arising out of or in connection with the use, or inability to use, the information. It is your responsibility to ensure that our products are used only for the purposes for which they are intended and are used in accordance with any applicable specifications, guidelines, standards, codes of practice, regulations and laws. The supply of our products and services are also subject to certain terms, warranties and exclusions which are available on request.

FLASHING INTO CONCRETE WALLS - MECHANICAL

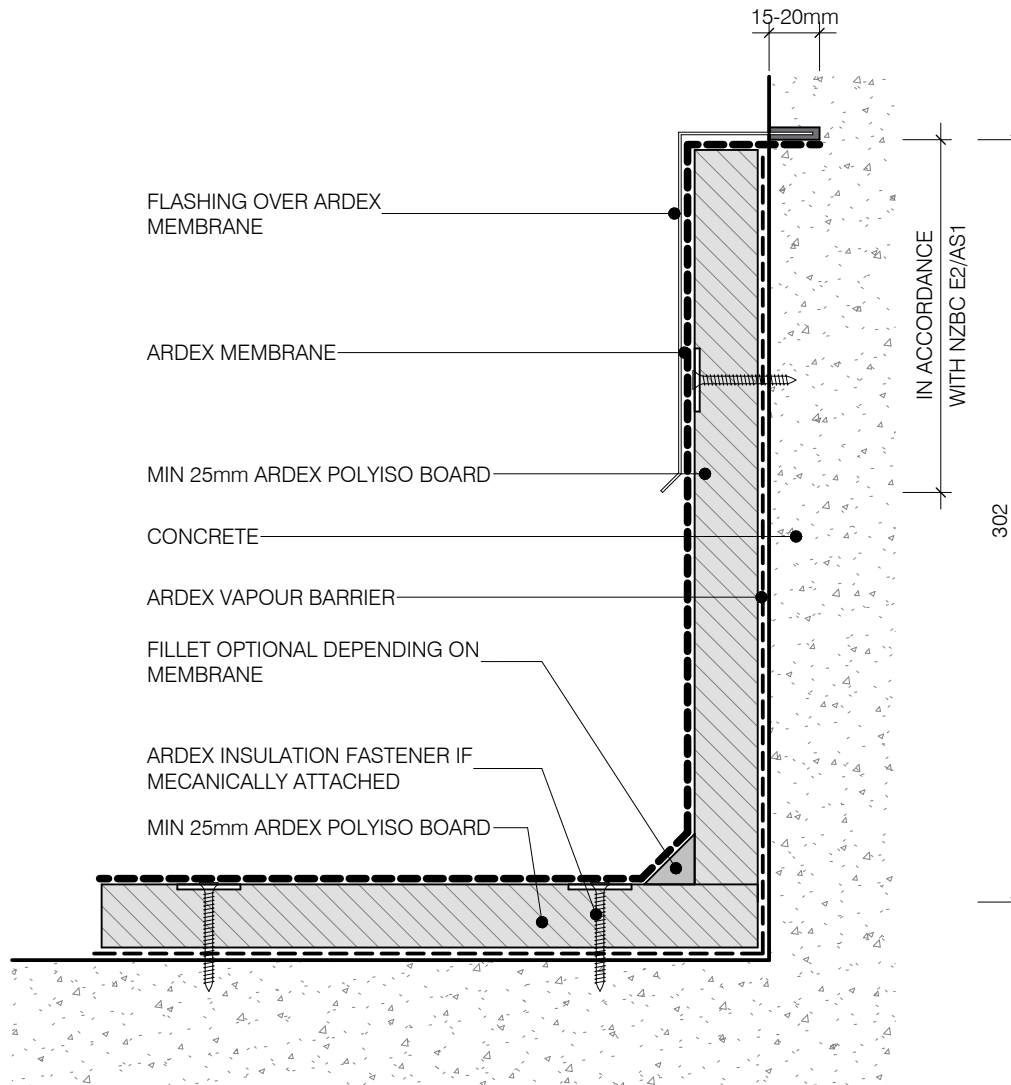
SHEET TITLE

DWG NO. **AWR-14**

DATE 01/07/2022

SCALE 1 : 3 @ A4





NOTE:
 ARDEX MEMBRANE IS ADHERED WITH ADHESIVE UP TO THE CHASE. THE FLASHING IS SEALED INTO THE CHASE USING ARDEX CA20P OR ARDEX RA88.

ARDEX WARM ROOFING

FLASHING INTO CONCRETE WALLS - FLASHING

SHEET TITLE

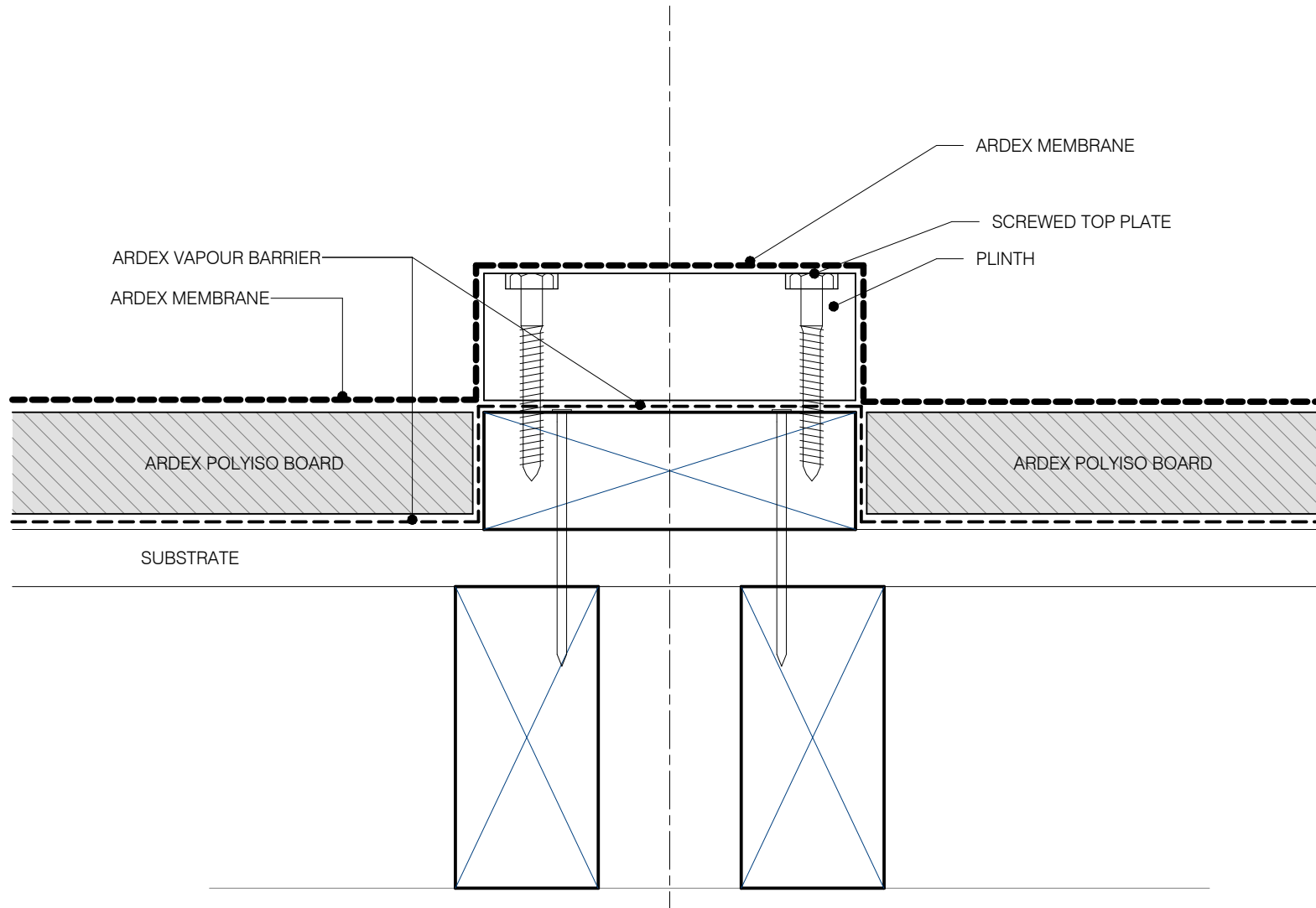
DWG NO. **AWR-15**

DATE 01/07/2022

SCALE 1 : 3 @ A4



Disclaimer: Ardex makes every reasonable effort to ensure that the technical details, recommendations and other information contained in this drawing are accurate and represent our knowledge and experience at the time of design and publication. Ardex reserves the right to change the information without prior notice. Ardex provides the information in good faith with no representations or warranties (whether implied or otherwise), and will not be liable for any losses or damages (whether direct, indirect or consequential) whatsoever, whether in contract, negligence or any other action, arising out of or in connection with the use, or inability to use, the information. It is your responsibility to ensure that our products are used only for the purposes for which they are intended and are used in accordance with any applicable specifications, guidelines, standards, codes of practice, regulations and laws. The supply of our products and services are also subject to certain terms, warranties and exclusions which are available on request.



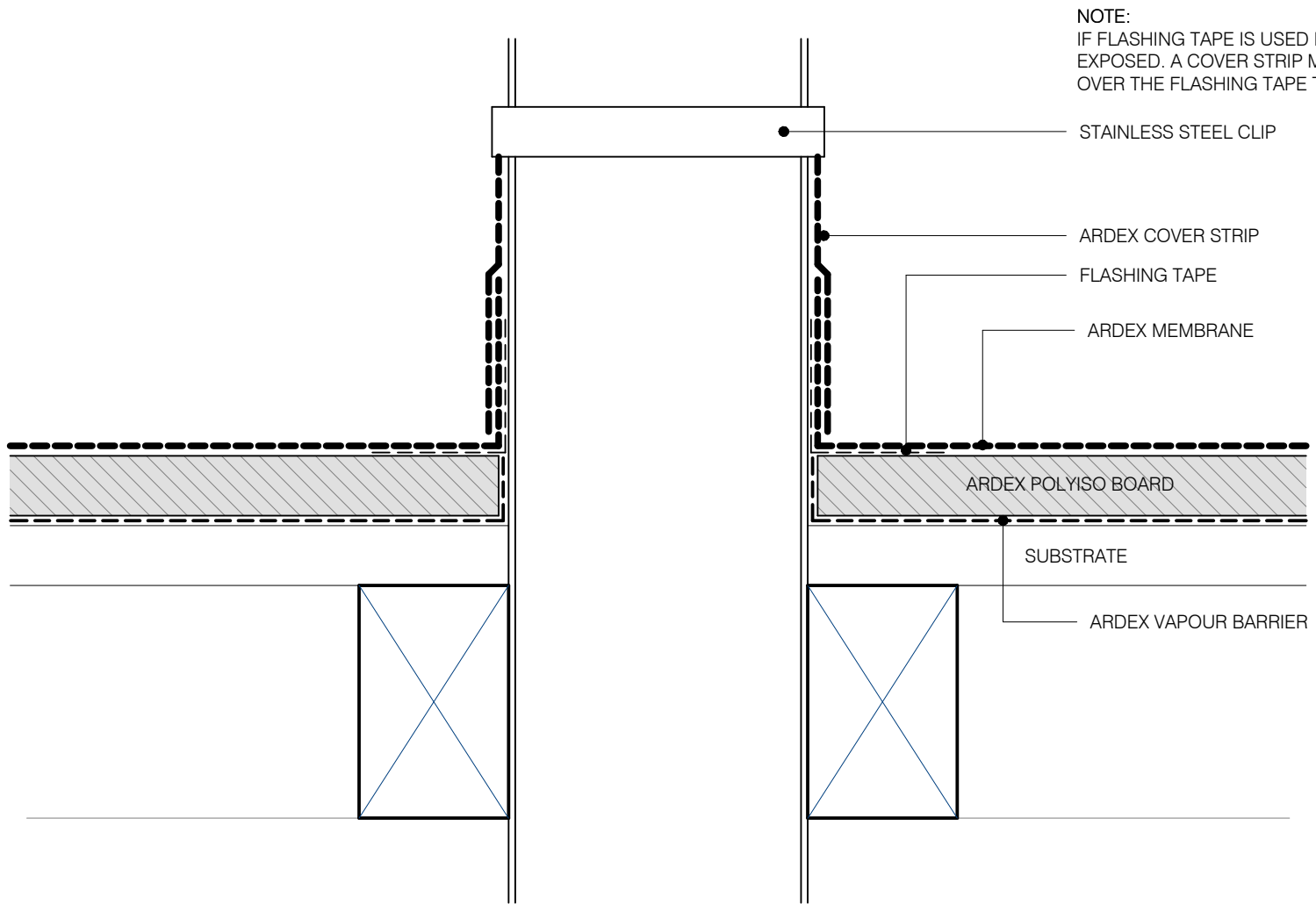
ARDEX WARM ROOFING

Disclaimer: Ardex makes every reasonable effort to ensure that the technical details, recommendations and other information contained in this drawing are accurate and represent our knowledge and experience at the time of design and publication. Ardex reserves the right to change the information without prior notice. Ardex provides the information in good faith with no representations or warranties (whether implied or otherwise), and will not be liable for any losses or damages (whether direct, indirect or consequential) whatsoever, whether in contract, negligence or any other action, arising out of or in connection with the use, or inability to use, the information. It is your responsibility to ensure that our products are used only for the purposes for which they are intended and are used in accordance with any applicable specifications, guidelines, standards, codes of practice, regulations and laws. The supply of our products and services are also subject to certain terms, warranties and exclusions which are available on request.

PLANT EQUIPMENT SUPPORTS
SHEET TITLE

DWG NO. **AWR-16**
DATE 01/07/2022
SCALE 1 : 2 @ A4





NOTE:
 IF FLASHING TAPE IS USED IT MUST NOT BE LEFT EXPOSED. A COVER STRIP MUST BE APPLIED OVER THE FLASHING TAPE TO FINISH

STAINLESS STEEL CLIP

ARDEX COVER STRIP

FLASHING TAPE

ARDEX MEMBRANE

ARDEX POLYISO BOARD

SUBSTRATE

ARDEX VAPOUR BARRIER

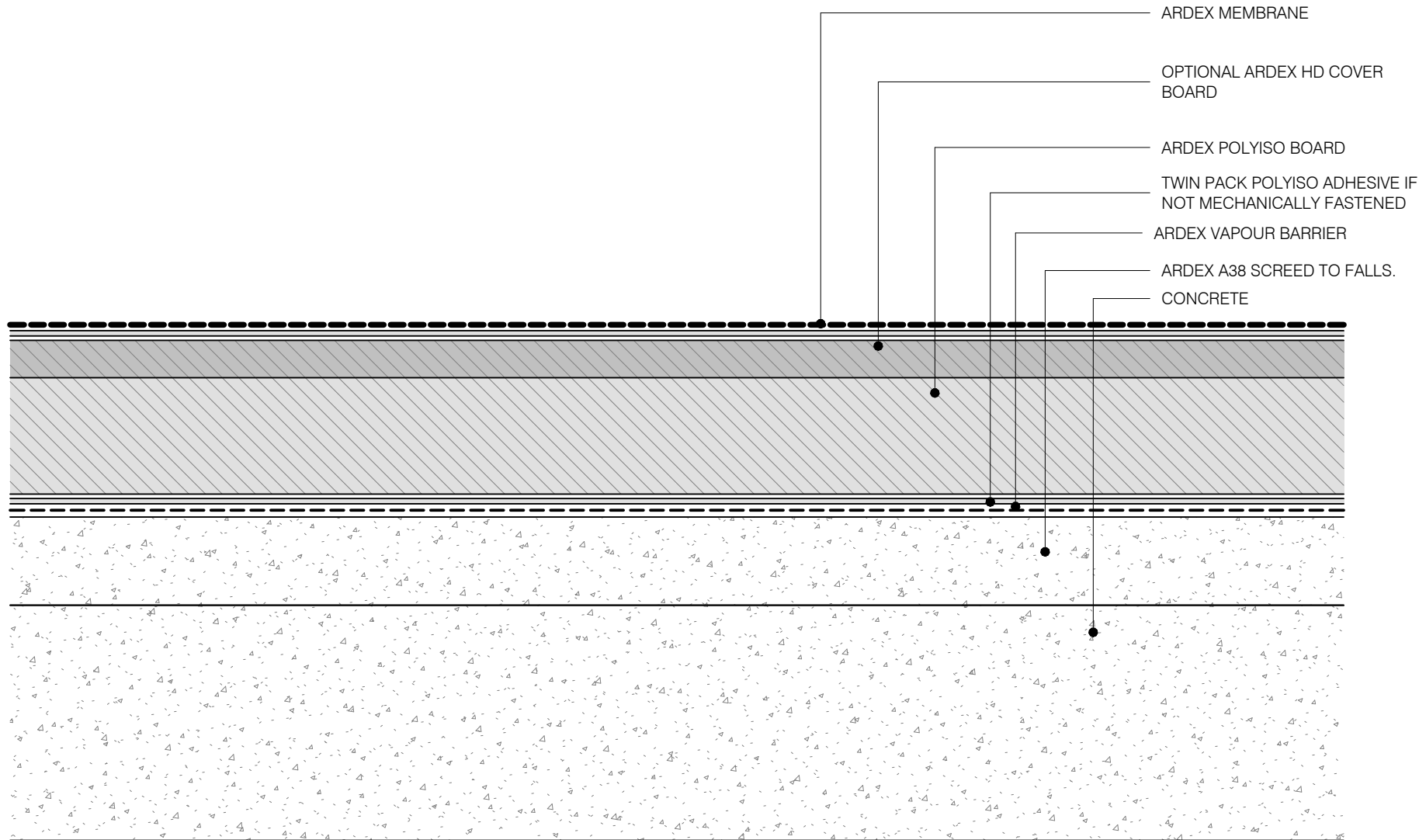
ARDEX WARM ROOFING

PIPE PENETRATION SHEET TITLE

DWG NO. **AWR-17**
 DATE 01/07/2022
 SCALE 1 : 2 @ A4



Disclaimer: Ardex makes every reasonable effort to ensure that the technical details, recommendations and other information contained in this drawing are accurate and represent our knowledge and experience at the time of design and publication. Ardex reserves the right to change the information without prior notice. Ardex provides the information in good faith with no representations or warranties (whether implied or otherwise), and will not be liable for any losses or damages (whether direct, indirect or consequential) whatsoever, whether in contract, negligence or any other action, arising out of or in connection with the use, or inability to use, the information. It is your responsibility to ensure that our products are used only for the purposes for which they are intended and are used in accordance with any applicable specifications, guidelines, standards, codes of practice, regulations and laws. The supply of our products and services are also subject to certain terms, warranties and exclusions which are available on request.



NOTE: FOR FASTENING OR FIXING PATTERN DEPENDENT ON WIND ZONE/R VALUES.
CONSULT WITH AN ARDEX REPRESENTATIVE

ARDEX WARM ROOFING

WARM ROOF SYSTEM - CONCRETE

SHEET TITLE

DWG NO.

AWR-18

DATE

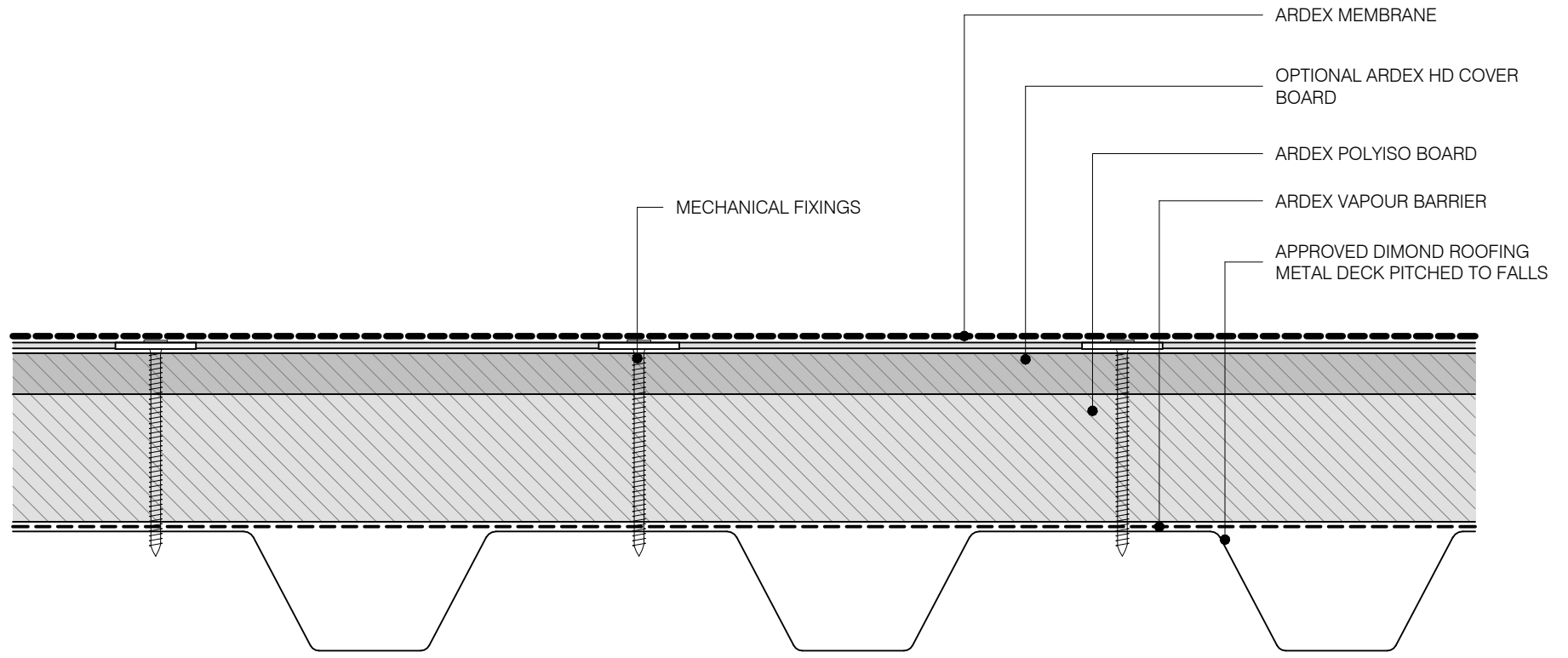
01/07/2022

SCALE

1 : 2 @ A4



Disclaimer: Ardex makes every reasonable effort to ensure that the technical details, recommendations and other information contained in this drawing are accurate and represent our knowledge and experience at the time of design and publication. Ardex reserves the right to change the information without prior notice. Ardex provides the information in good faith with no representations or warranties (whether implied or otherwise), and will not be liable for any losses or damages (whether direct, indirect or consequential) whatsoever, whether in contract, negligence or any other action, arising out of or in connection with the use, or inability to use, the information. It is your responsibility to ensure that our products are used only for the purposes for which they are intended and are used in accordance with any applicable specifications, guidelines, standards, codes of practice, regulations and laws. The supply of our products and services are also subject to certain terms, warranties and exclusions which are available on request.



NOTE: FOR FASTENING OR FIXING PATTERN DEPENDENT ON WIND ZONE/R VALUES.
CONSULT WITH AN ARDEX REPRESENTATIVE

ARDEX WARM ROOFING

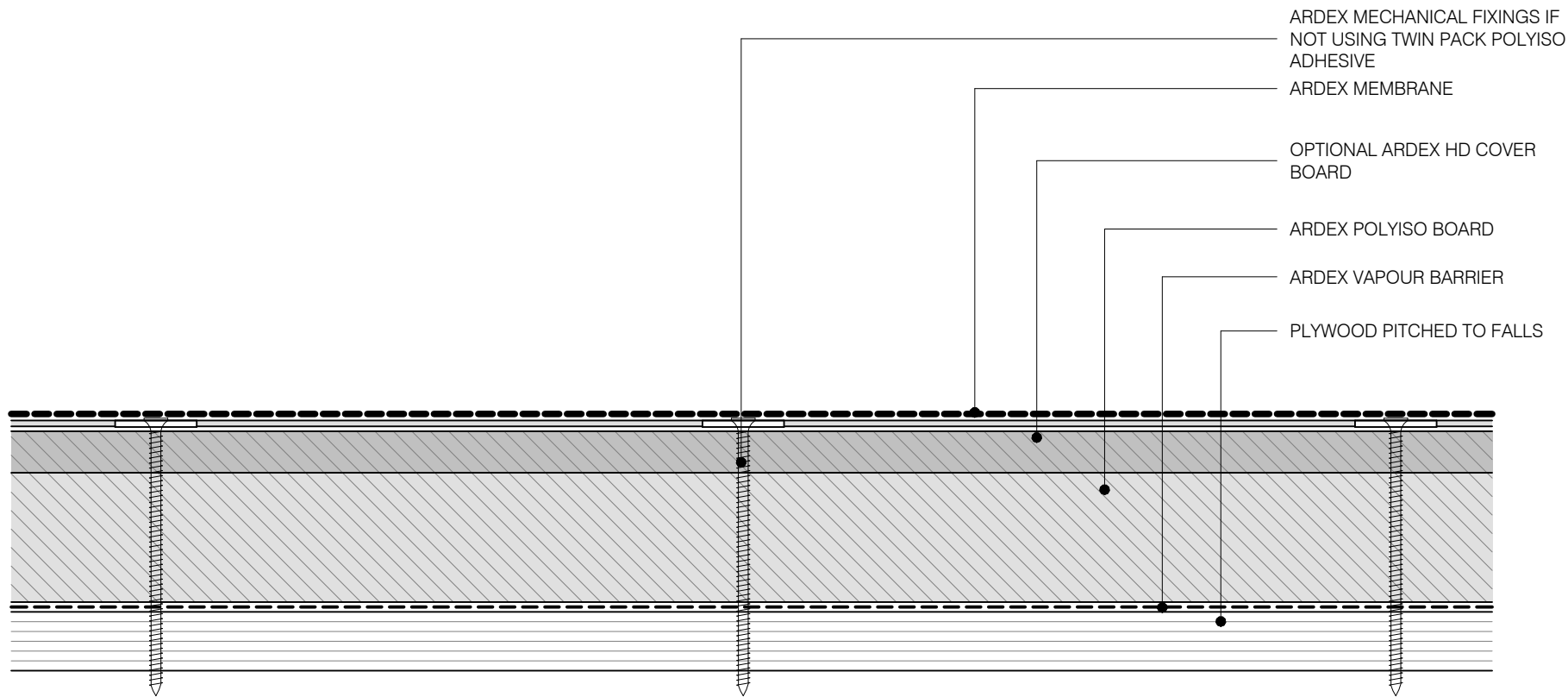
WARM ROOF SYSTEM - METAL DECK

SHEET TITLE

DWG NO. **AWR-19**
DATE 01/07/2022
SCALE 1 : 2 @ A4



Disclaimer: Ardex makes every reasonable effort to ensure that the technical details, recommendations and other information contained in this drawing are accurate and represent our knowledge and experience at the time of design and publication. Ardex reserves the right to change the information without prior notice. Ardex provides the information in good faith with no representations or warranties (whether implied or otherwise), and will not be liable for any losses or damages (whether direct, indirect or consequential) whatsoever, whether in contract, negligence or any other action, arising out of or in connection with the use, or inability to use, the information. It is your responsibility to ensure that our products are used only for the purposes for which they are intended and are used in accordance with any applicable specifications, guidelines, standards, codes of practice, regulations and laws. The supply of our products and services are also subject to certain terms, warranties and exclusions which are available on request.



NOTE: FOR FASTENING OR FIXING PATTERN DEPENDENT ON WIND ZONE/R VALUES.
CONSULT WITH AN ARDEX REPRESENTATIVE

ARDEX WARM ROOFING

WARM ROOF SYSTEM - PLYWOOD

SHEET TITLE

DWG NO. **AWR-20**

DATE 01/07/2022

SCALE 1 : 2 @ A4



Disclaimer: Ardex makes every reasonable effort to ensure that the technical details, recommendations and other information contained in this drawing are accurate and represent our knowledge and experience at the time of design and publication. Ardex reserves the right to change the information without prior notice. Ardex provides the information in good faith with no representations or warranties (whether implied or otherwise), and will not be liable for any losses or damages (whether direct, indirect or consequential) whatsoever, whether in contract, negligence or any other action, arising out of or in connection with the use, or inability to use, the information. It is your responsibility to ensure that our products are used only for the purposes for which they are intended and are used in accordance with any applicable specifications, guidelines, standards, codes of practice, regulations and laws. The supply of our products and services are also subject to certain terms, warranties and exclusions which are available on request.