



Version 1 January 2024

ARDEX MEMBRANE DRAWING LIST

DRAWING NO.	SHEET TITLE	DATE
AWR-00	DRAWING LIST	01/07/2022
AWR-01	THRESHOLD AT OPENING - REBATED	01/07/2022
AWR-02	THRESHOLD AT OPENING	30/06/2022
AWR-03	BOTTOM PLATE WALL - DIRECT FIXED	27/06/2022
AWR-04	BOTTOM PLATE WALL - CAVITY	30/06/2022
AWR-05	INTERNAL GUTTER	01/07/2022
AWR-06	INTERNAL GUTTER	01/07/2022
AWR-07	BOX GUTTER & PARAPET DOWNTURN	01/07/2022
AWR-08	PREFORMED OVERFLOW	01/07/2022
AWR-09	SCUPPER OUTLET	01/07/2022
AWR-10	EAVES & VERGE	27/06/2022
AWR-11	SPOUTING	01/07/2022
AWR-12	ROOF PENETRATION	01/07/2022
AWR-13	FLASHING INTO CONCRETE WALLS - CHASE WITH COVER	01/07/2022
AWR-14	FLASHING INTO CONCRETE WALLS - MECHANICAL	01/07/2022
AWR-15	FLASHING INTO CONCRETE WALLS - FLASHING	01/07/2022
AWR-16	PLANT EQUIPMENT SUPPORTS	01/07/2022
AWR-17	PIPE PENETRATION	01/07/2022
AWR-18	WARM ROOF SYSTEM - CONCRETE	01/07/2022
AWR-19	WARM ROOF SYSTEM - METAL DECK	01/07/2022
AWR-20	WARM ROOF SYSTEM - PLYWOOD	01/07/2022

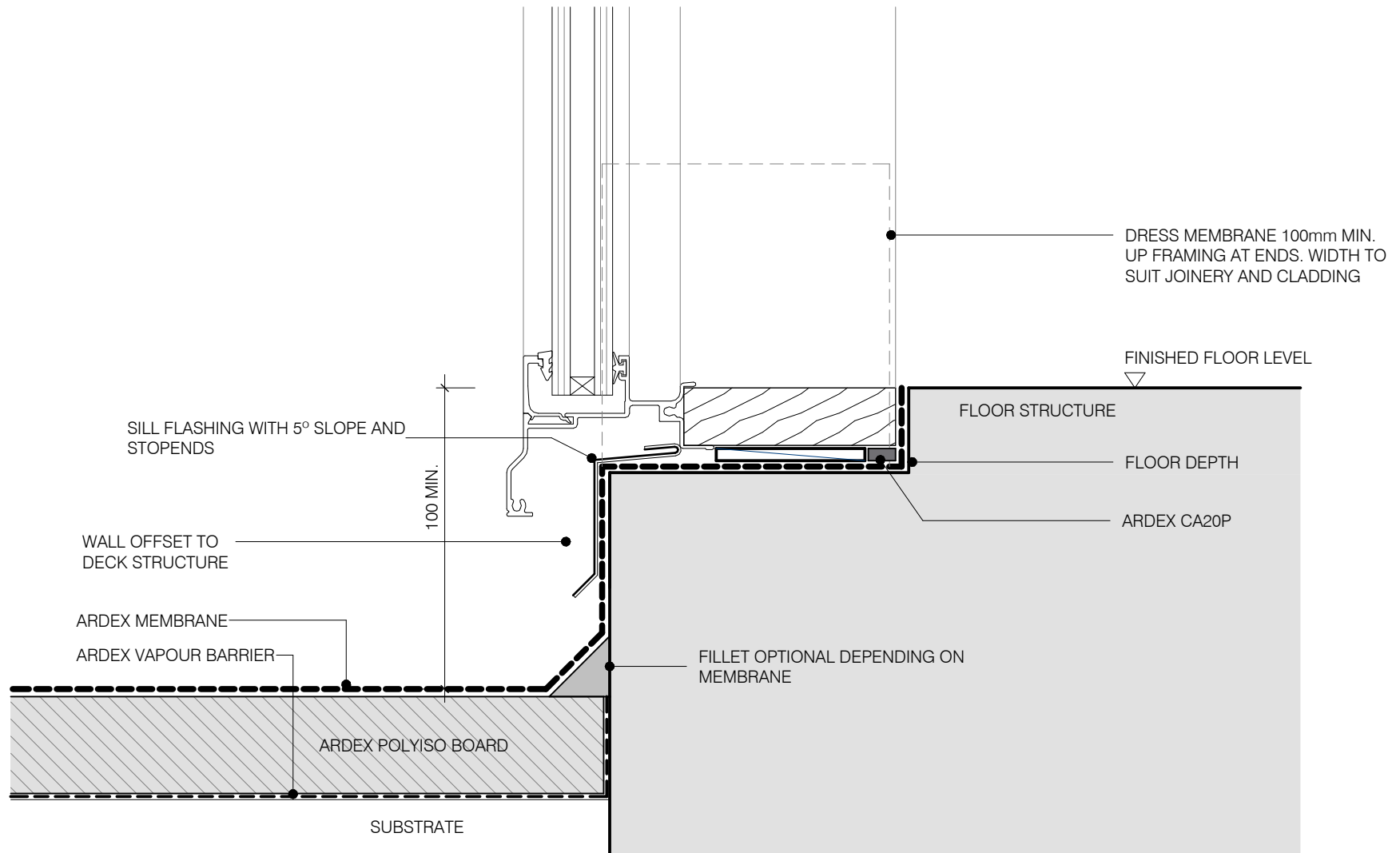
ARDEX WARM ROOFING

Disclaimer: Ardex makes every reasonable effort to ensure that the technical details, recommendations and other information contained in this drawing are accurate and represent our knowledge and experience at the time of design and publication. Ardex reserves the right to change the information without prior notice. Ardex provides the information in good faith with no representations or warranties (whether implied or otherwise), and will not be liable for any losses or damages (whether direct, indirect or consequential) whatsoever, whether in contract, negligence or any other action, arising out of or in connection with the use, or inability to use, the information. It is your responsibility to ensure that our products are used only for the purposes for which they are intended and are used in accordance with any applicable specifications, guidelines, standards, codes of practice, regulations and laws. The supply of our products and services are also subject to certain terms, warranties and exclusions which are available on request.

DRAWING LIST
SHEET TITLE

DWG NO.	AWR-00
DATE	01/07/2022
SCALE	NOT TO SCALE





ARDEX WARM ROOFING

Disclaimer: Ardex makes every reasonable effort to ensure that the technical details, recommendations and other information contained in this drawing are accurate and represent our knowledge and experience at the time of design and publication. Ardex reserves the right to change the information without prior notice. Ardex provides the information in good faith with no representations or warranties (whether implied or otherwise), and will not be liable for any losses or damages (whether direct, indirect or consequential) whatsoever, whether in contract, negligence or any other action, arising out of or in connection with the use, or inability to use, the information. It is your responsibility to ensure that our products are used only for the purposes for which they are intended and are used in accordance with any applicable specifications, guidelines, standards, codes of practice, regulations and laws. The supply of our products and services are also subject to certain terms, warranties and exclusions which are available on request.

THRESHOLD AT OPENING - REBATED

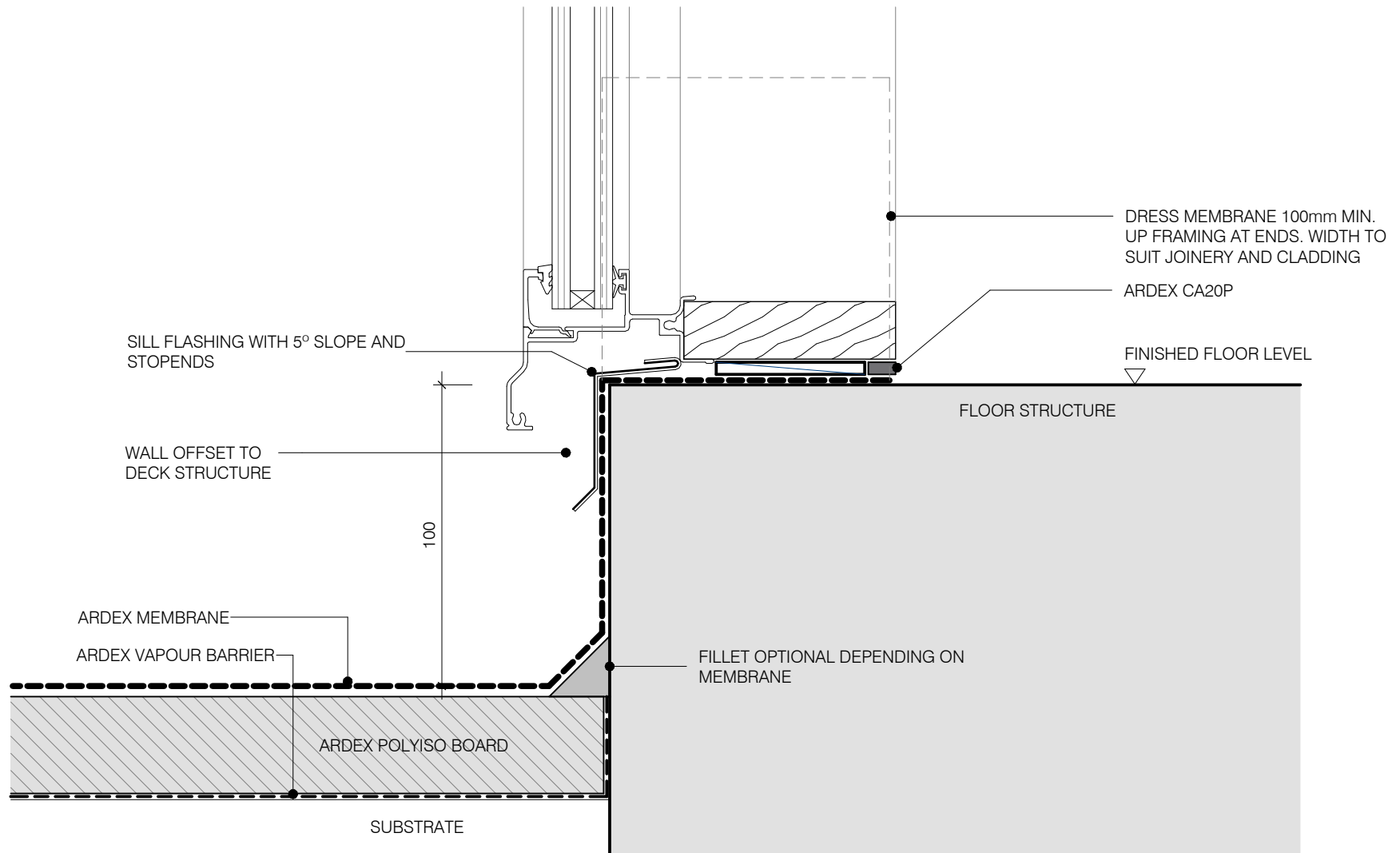
SHEET TITLE

DWG NO. **AWR-01**

DATE 01/07/2022

SCALE 1 : 2 @ A4





ARDEX WARM ROOFING

THRESHOLD AT OPENING

SHEET TITLE

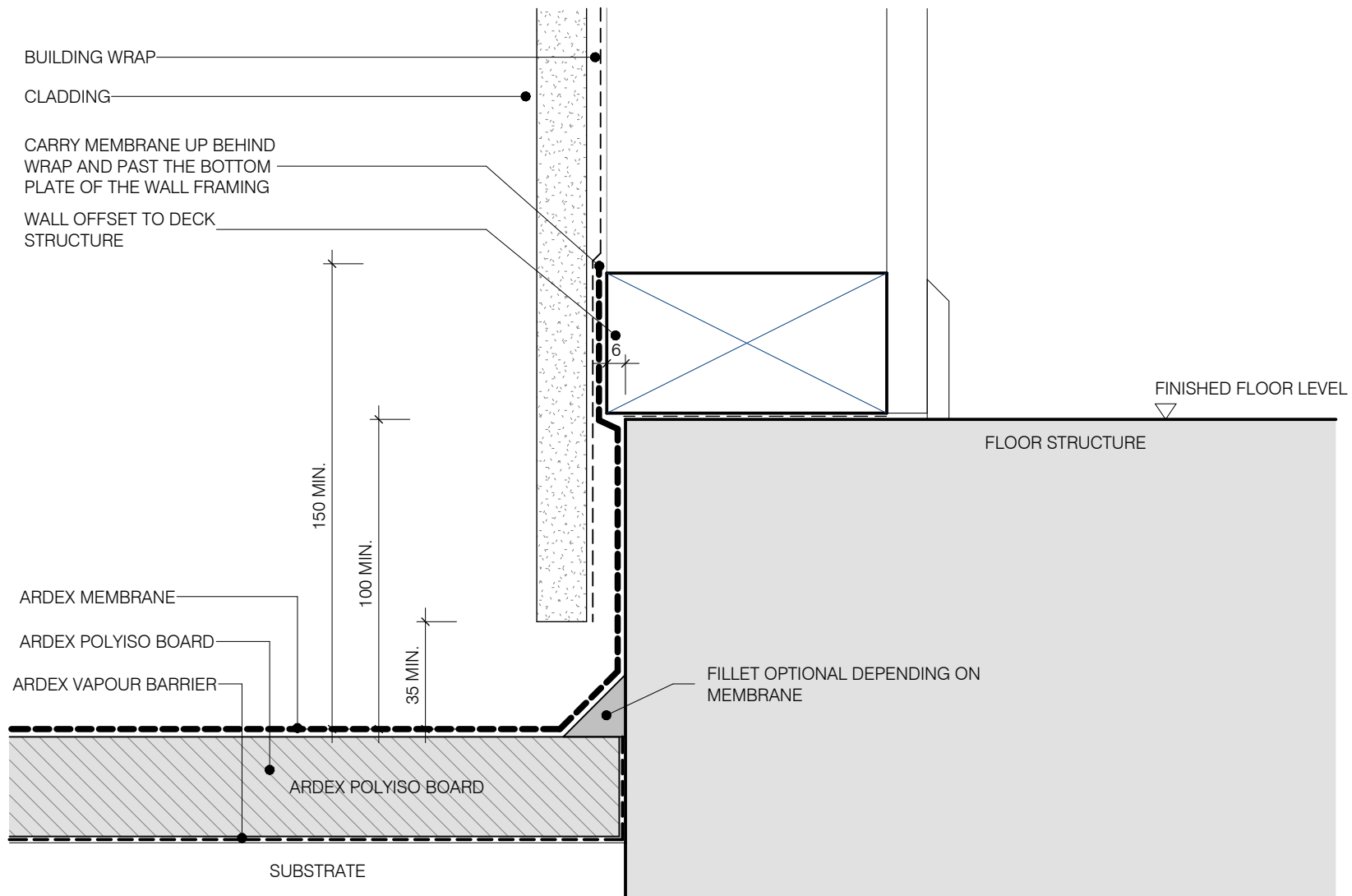
DWG NO. **AWR-02**

DATE 30/06/2022

SCALE 1 : 2 @ A4



Disclaimer: Ardex makes every reasonable effort to ensure that the technical details, recommendations and other information contained in this drawing are accurate and represent our knowledge and experience at the time of design and publication. Ardex reserves the right to change the information without prior notice. Ardex provides the information in good faith with no representations or warranties (whether implied or otherwise), and will not be liable for any losses or damages (whether direct, indirect or consequential) whatsoever, whether in contract, negligence or any other action, arising out of or in connection with the use, or inability to use, the information. It is your responsibility to ensure that our products are used only for the purposes for which they are intended and are used in accordance with any applicable specifications, guidelines, standards, codes of practice, regulations and laws. The supply of our products and services are also subject to certain terms, warranties and exclusions which are available on request.



ARDEX WARM ROOFING

BOTTOM PLATE WALL - DIRECT FIXED

SHEET TITLE

DWG NO. **AWR-03**

DATE 27/06/2022

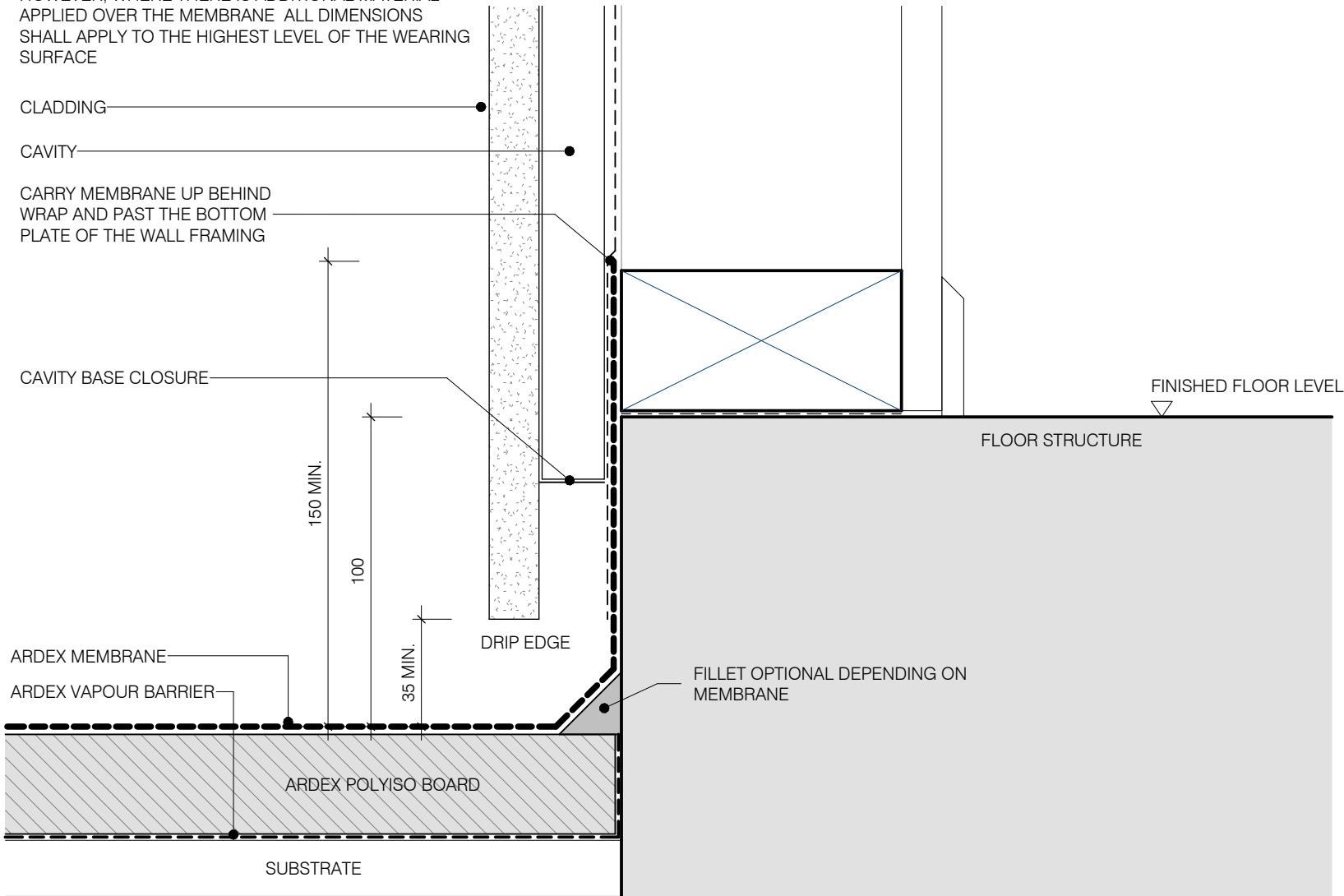
SCALE 1 : 2 @ A4



Disclaimer: Ardex makes every reasonable effort to ensure that the technical details, recommendations and other information contained in this drawing are accurate and represent our knowledge and experience at the time of design and publication. Ardex reserves the right to change the information without prior notice. Ardex provides the information in good faith with no representations or warranties (whether implied or otherwise), and will not be liable for any losses or damages (whether direct, indirect or consequential) whatsoever, whether in contract, negligence or any other action, arising out of or in connection with the use, or inability to use, the information. It is your responsibility to ensure that our products are used only for the purposes for which they are intended and are used in accordance with any applicable specifications, guidelines, standards, codes of practice, regulations and laws. The supply of our products and services are also subject to certain terms, warranties and exclusions which are available on request.

NOTE:

- 1). INTERNAL CORNERS TO BE FORMED AS PER DETAIL
2). DIMENSIONS ARE SHOWN TO MEMBRANE.
HOWEVER, WHERE THERE IS ADDITIONAL MATERIAL
APPLIED OVER THE MEMBRANE ALL DIMENSIONS
SHALL APPLY TO THE HIGHEST LEVEL OF THE WEARING
SURFACE



ARDEX WARM ROOFING

Disclaimer: Ardex makes every reasonable effort to ensure that the technical details, recommendations and other information contained in this drawing are accurate and represent our knowledge and experience at the time of design and publication. Ardex reserves the right to change the information without prior notice. Ardex provides the information in good faith with no representations or warranties (whether implied or otherwise), and will not be liable for any losses or damages (whether direct, indirect or consequential) whatsoever, whether in contract, negligence or any other action, arising out of or in connection with the use, or inability to use, the information. It is your responsibility to ensure that our products are used only for the purposes for which they are intended and are used in accordance with any applicable specifications, guidelines, standards, codes of practice, regulations and laws. The supply of our products and services are also subject to certain terms, warranties and exclusions which are available on request.

BOTTOM PLATE WALL - CAVITY

SHEET TITLE

DWG NO.

AWR-04

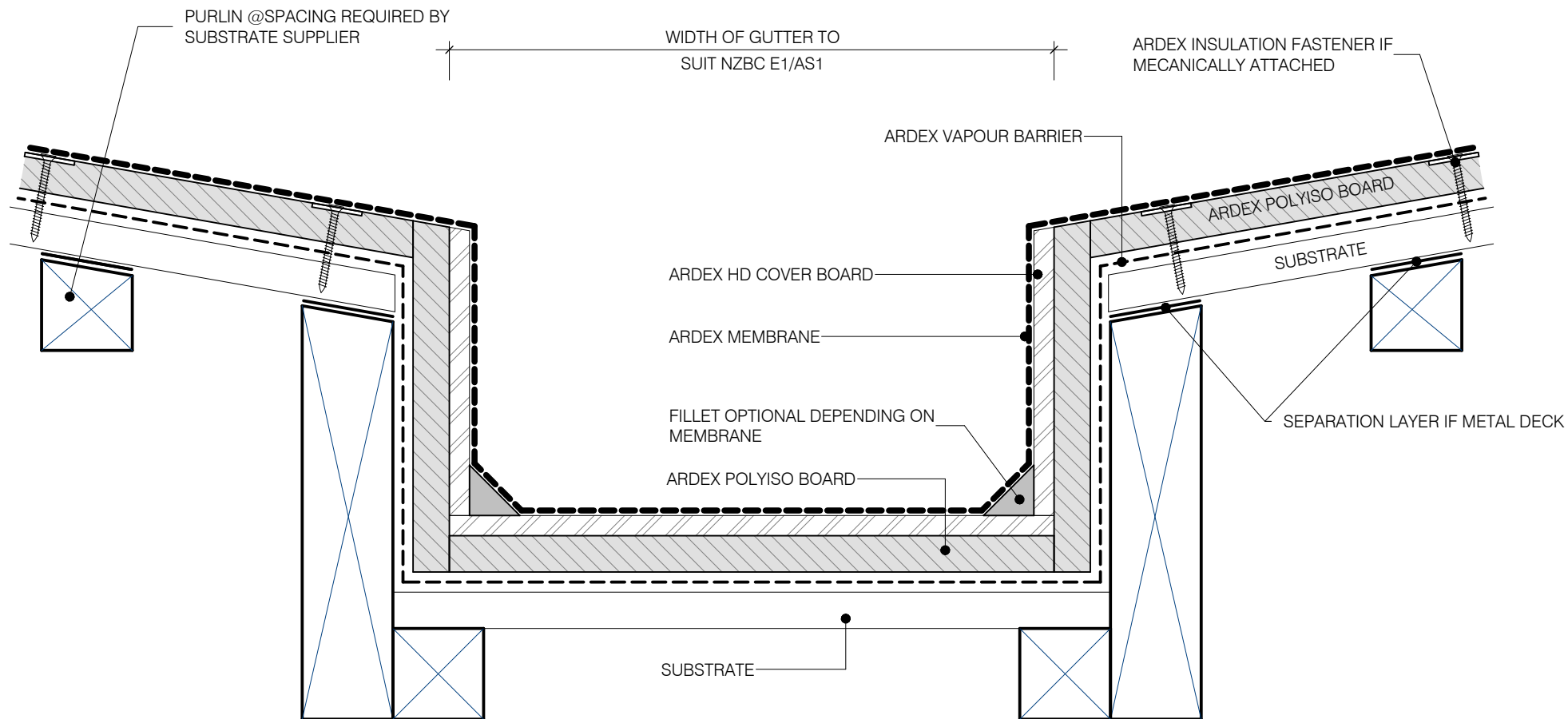
DATE

30/06/2022

SCALE

1 : 2 @ A4





ARDEX WARM ROOFING

INTERNAL GUTTER SHEET TITLE

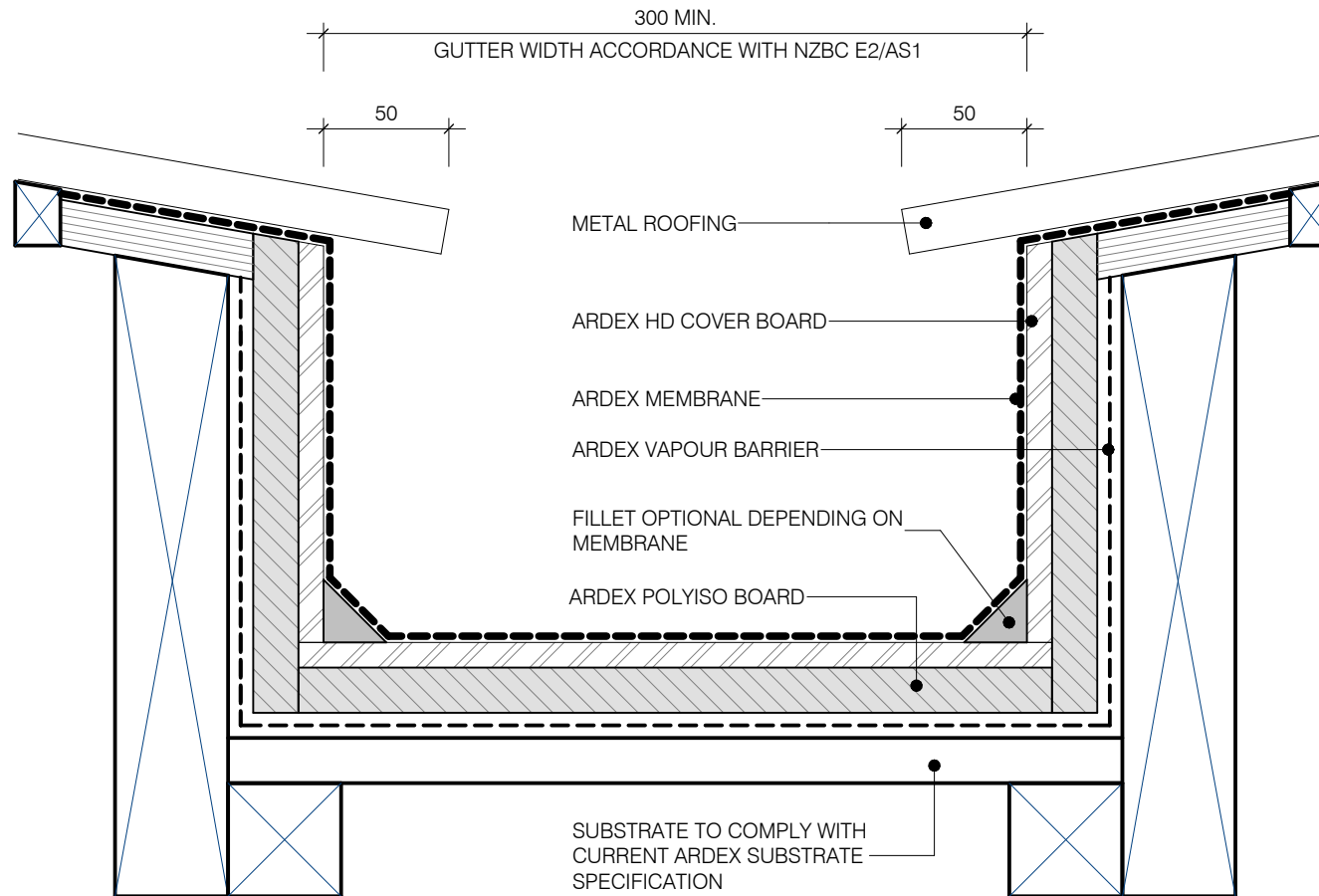
Disclaimer: Ardex makes every reasonable effort to ensure that the technical details, recommendations and other information contained in this drawing are accurate and represent our knowledge and experience at the time of design and publication. Ardex reserves the right to change the information without prior notice. Ardex provides the information in good faith with no representations or warranties (whether implied or otherwise), and will not be liable for any losses or damages (whether direct, indirect or consequential) whatsoever, whether in contract, negligence or any other action, arising out of or in connection with the use, or inability to use, the information. It is your responsibility to ensure that our products are used only for the purposes for which they are intended and are used in accordance with any applicable specifications, guidelines, standards, codes of practice, regulations and laws. The supply of our products and services are also subject to certain terms, warranties and exclusions which are available on request.

DWG NO. **AWR-05**

DATE 01/07/2022

SCALE 1 : 3 @ A4





ARDEX WARM ROOFING

INTERNAL GUTTER SHEET TITLE

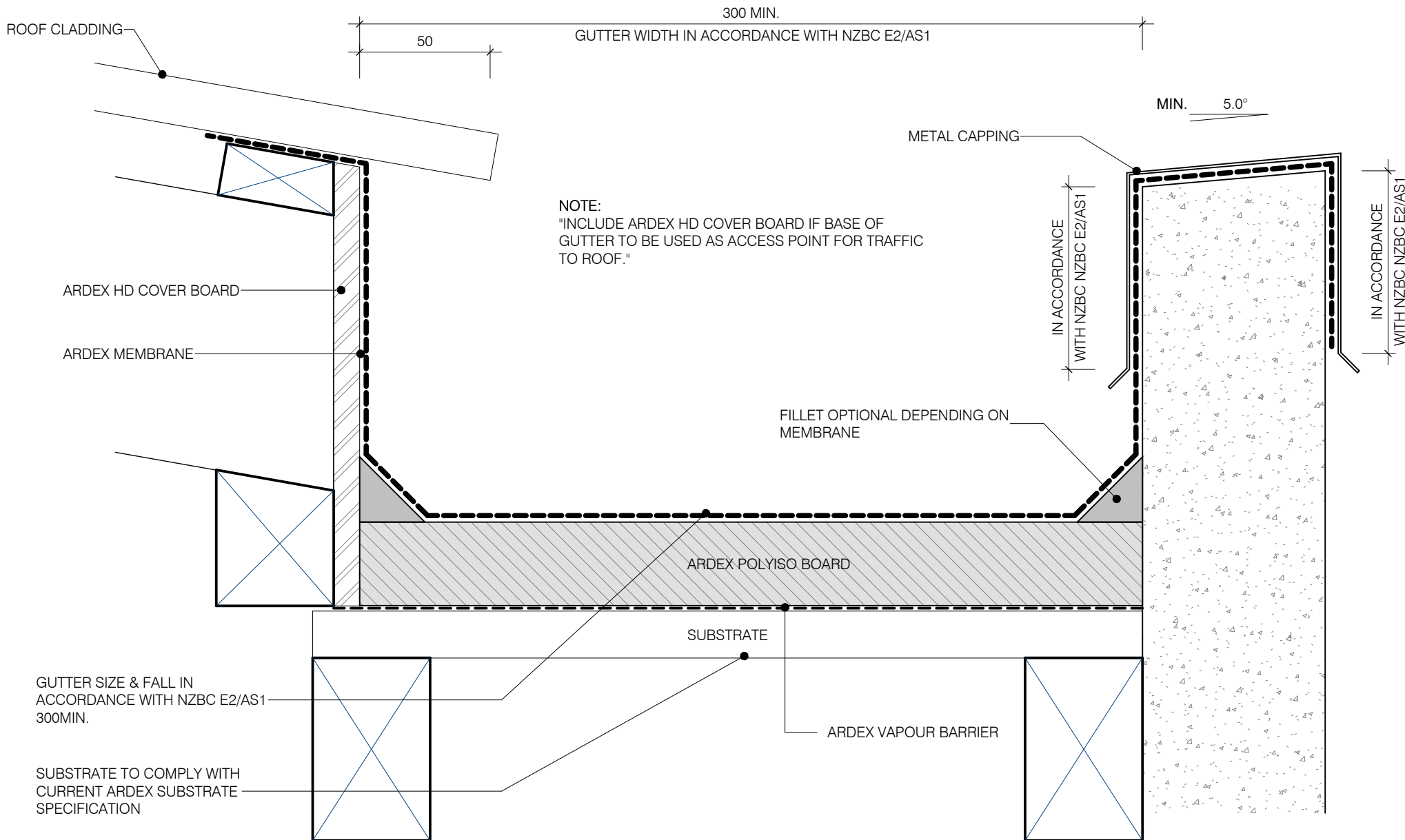
Disclaimer: Ardex makes every reasonable effort to ensure that the technical details, recommendations and other information contained in this drawing are accurate and represent our knowledge and experience at the time of design and publication. Ardex reserves the right to change the information without prior notice. Ardex provides the information in good faith with no representations or warranties (whether implied or otherwise), and will not be liable for any losses or damages (whether direct, indirect or consequential) whatsoever, whether in contract, negligence or any other action, arising out of or in connection with the use, or inability to use, the information. It is your responsibility to ensure that our products are used only for the purposes for which they are intended and are used in accordance with any applicable specifications, guidelines, standards, codes of practice, regulations and laws. The supply of our products and services are also subject to certain terms, warranties and exclusions which are available on request.

DWG NO. **AWR-06**

DATE 01/07/2022

SCALE 1 : 3 @ A4





ARDEX WARM ROOFING

Disclaimer: Ardex makes every reasonable effort to ensure that the technical details, recommendations and other information contained in this drawing are accurate and represent our knowledge and experience at the time of design and publication. Ardex reserves the right to change the information without prior notice. Ardex provides the information in good faith with no representations or warranties (whether implied or otherwise), and will not be liable for any losses or damages (whether direct, indirect or consequential) whatsoever, whether in contract, negligence or any other action, arising out of or in connection with the use, or inability to use, the information. It is your responsibility to ensure that our products are used only for the purposes for which they are intended and are used in accordance with any applicable specifications, guidelines, standards, codes of practice, regulations and laws. The supply of our products and services are also subject to certain terms, warranties and exclusions which are available on request.

BOX GUTTER & PARAPET DOWNTURN

SHEET TITLE

DWG NO.

AWR-07

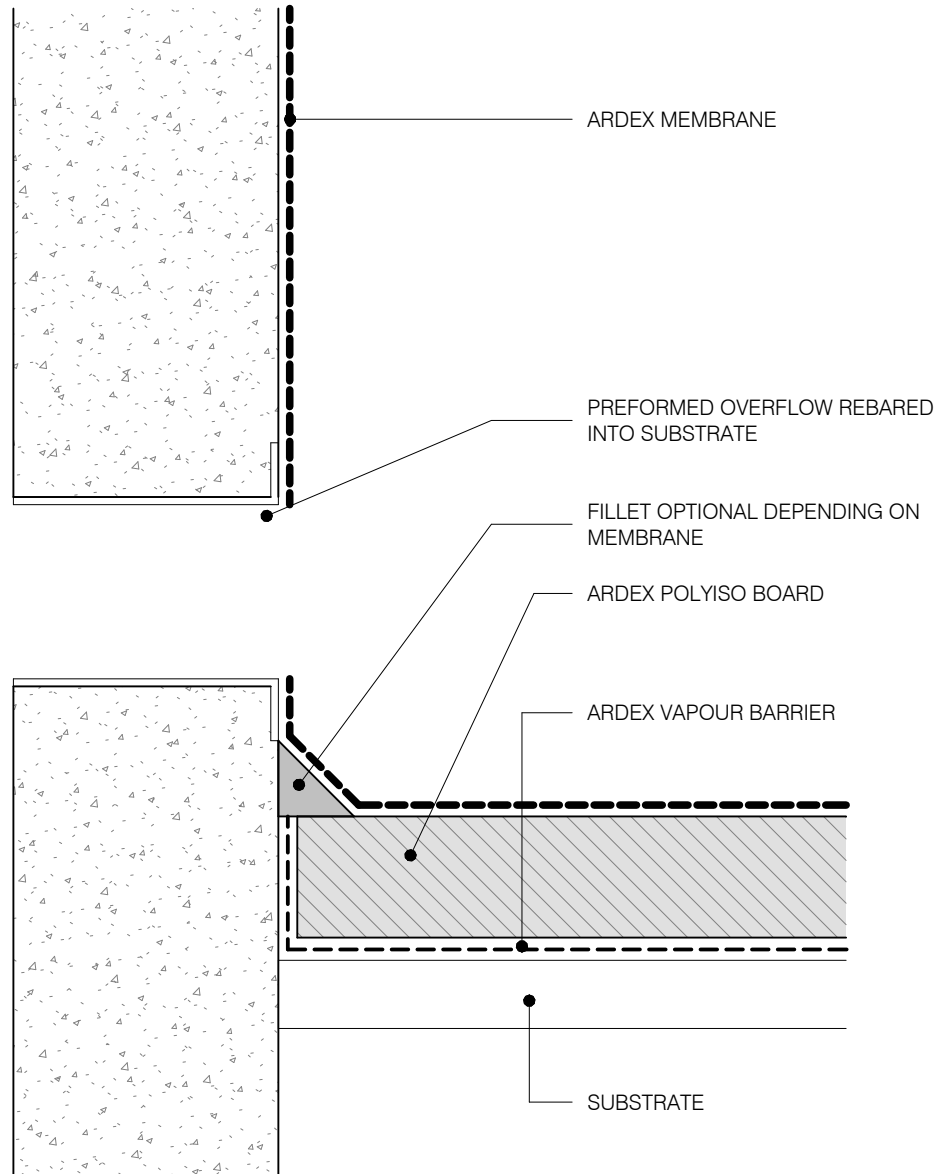
DATE

01/07/2022

SCALE

1 : 2 @ A4





ARDEX WARM ROOFING

Disclaimer: Ardex makes every reasonable effort to ensure that the technical details, recommendations and other information contained in this drawing are accurate and represent our knowledge and experience at the time of design and publication. Ardex reserves the right to change the information without prior notice. Ardex provides the information in good faith with no representations or warranties (whether implied or otherwise), and will not be liable for any losses or damages (whether direct, indirect or consequential) whatsoever, whether in contract, negligence or any other action, arising out of or in connection with the use, or inability to use, the information. It is your responsibility to ensure that our products are used only for the purposes for which they are intended and are used in accordance with any applicable specifications, guidelines, standards, codes of practice, regulations and laws. The supply of our products and services are also subject to certain terms, warranties and exclusions which are available on request.

PREFORMED OVERFLOW

SHEET TITLE

DWG NO. **AWR-08**

DATE 01/07/2022

SCALE 1 : 2 @ A4



METAL CAPPING

ARDEX CA20P

ARDEX SCUPPER

EXTERNAL RAINHEAD WITH
OVERFLOW

5.0° MIN.

IN ACCORDANCE
WITH NZBC E2/AS1

IN ACCORDANCE
WITH E2/AS1

REBATE SCUPPER INTO SUBSTRATE

ARDEX MEMBRANE

ARDEX POLYISO BOARD

SUBSTRATE

ARDEX VAPOUR BARRIER

50 MIN.

ARDEX WARM ROOFING

SCUPPER OUTLET SHEET TITLE

DWG NO.

AWR-09

DATE

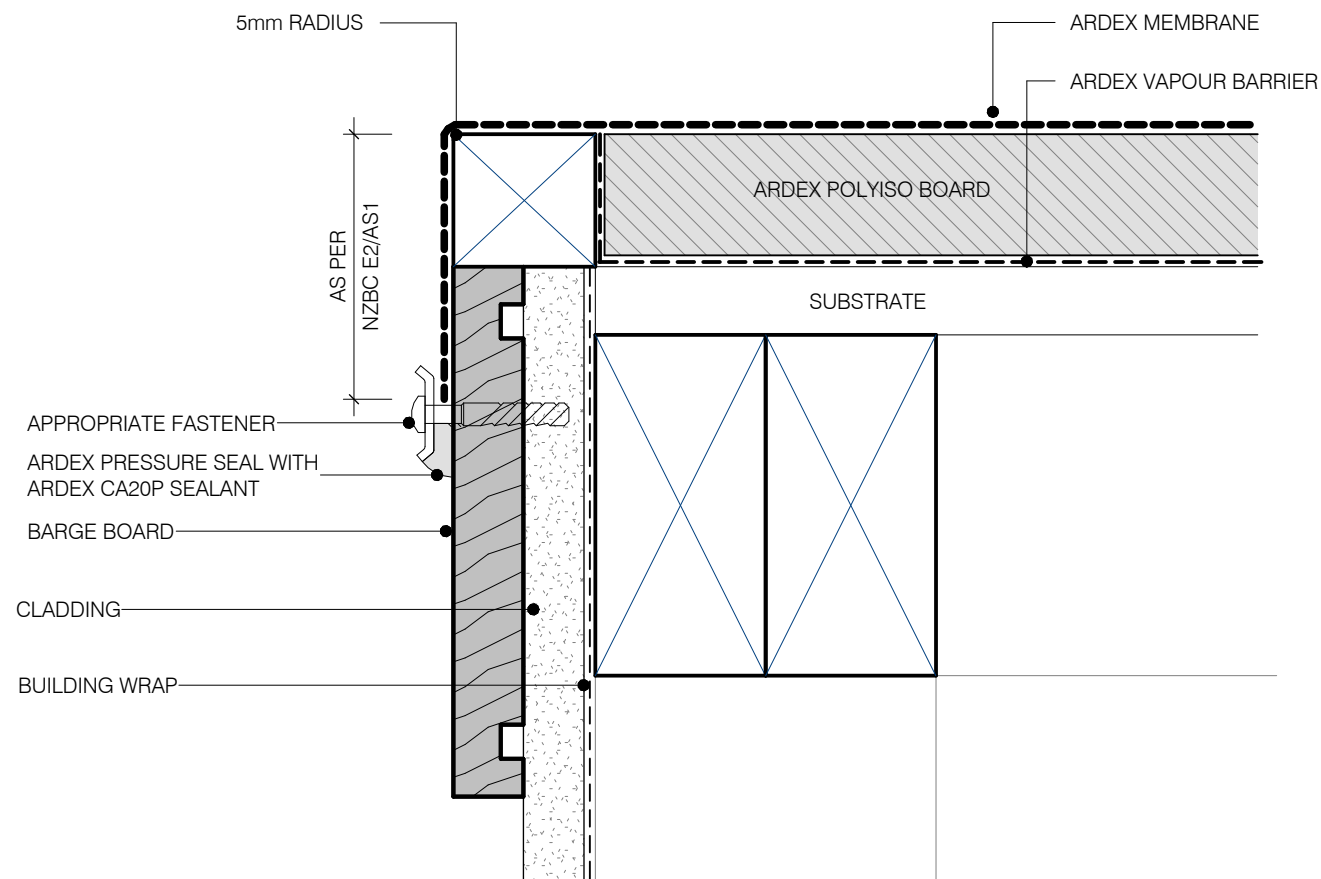
01/07/2022

SCALE

1 : 2 @ A4



Disclaimer: Ardex makes every reasonable effort to ensure that the technical details, recommendations and other information contained in this drawing are accurate and represent our knowledge and experience at the time of design and publication. Ardex reserves the right to change the information without prior notice. Ardex provides the information in good faith with no representations or warranties (whether implied or otherwise), and will not be liable for any losses or damages (whether direct, indirect or consequential) whatsoever, whether in contract, negligence or any other action, arising out of or in connection with the use, or inability to use, the information. It is your responsibility to ensure that our products are used only for the purposes for which they are intended and are used in accordance with any applicable specifications, guidelines, standards, codes of practice, regulations and laws. The supply of our products and services are also subject to certain terms, warranties and exclusions which are available on request.



ARDEX WARM ROOFING

Disclaimer: Ardex makes every reasonable effort to ensure that the technical details, recommendations and other information contained in this drawing are accurate and represent our knowledge and experience at the time of design and publication. Ardex reserves the right to change the information without prior notice. Ardex provides the information in good faith with no representations or warranties (whether implied or otherwise), and will not be liable for any losses or damages (whether direct, indirect or consequential) whatsoever, whether in contract, negligence or any other action, arising out of or in connection with the use, or inability to use, the information. It is your responsibility to ensure that our products are used only for the purposes for which they are intended and are used in accordance with any applicable specifications, guidelines, standards, codes of practice, regulations and laws. The supply of our products and services are also subject to certain terms, warranties and exclusions which are available on request.

EAVES & VERGE

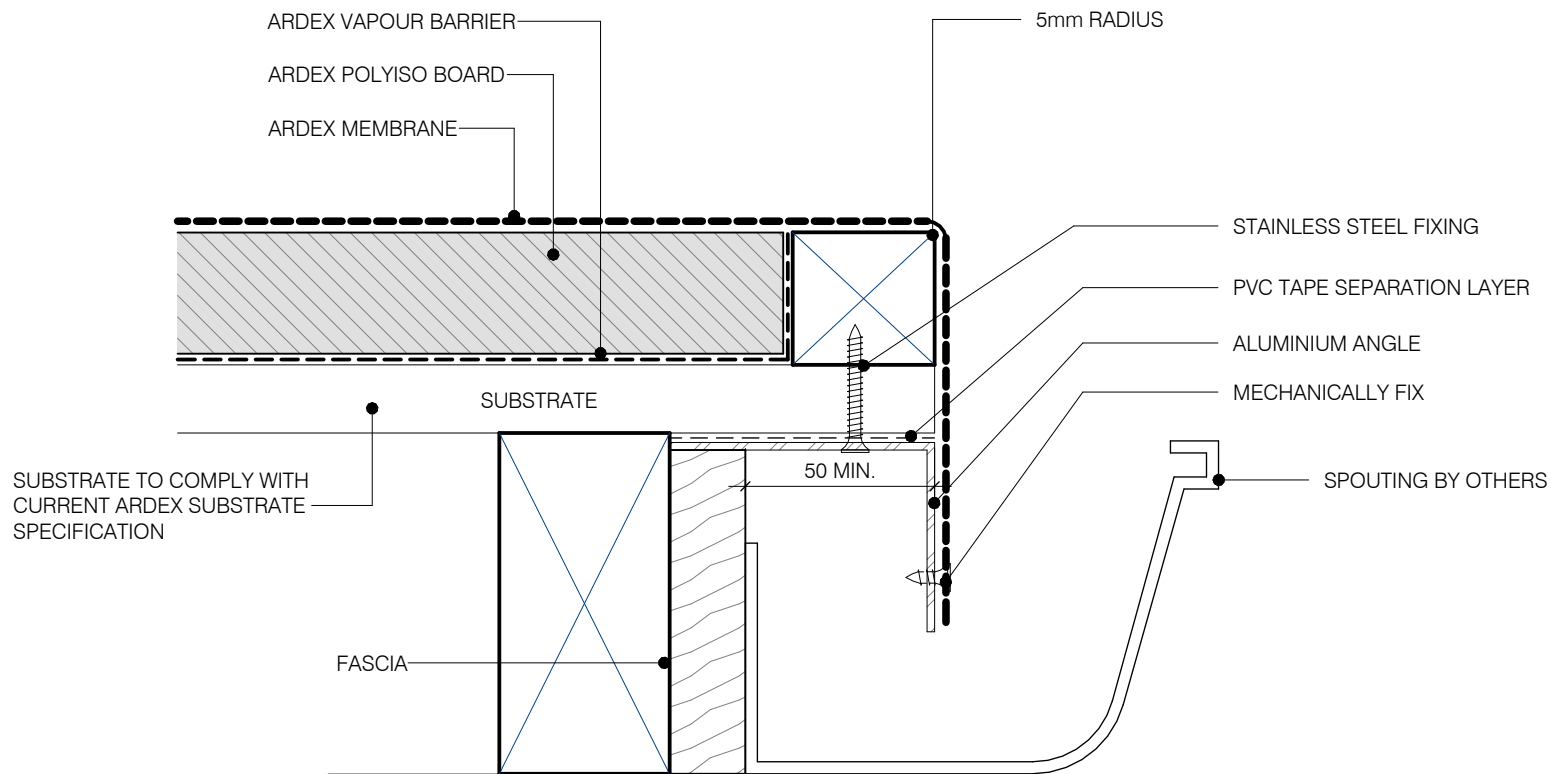
SHEET TITLE

DWG NO. **AWR-10**

DATE 27/06/2022

SCALE 1 : 2 @ A4





ARDEX WARM ROOFING

SPOUTING SHEET TITLE

DWG NO. **AWR-11**

DATE 01/07/2022

SCALE 1 : 2 @ A4



Disclaimer: Ardex makes every reasonable effort to ensure that the technical details, recommendations and other information contained in this drawing are accurate and represent our knowledge and experience at the time of design and publication. Ardex reserves the right to change the information without prior notice. Ardex provides the information in good faith with no representations or warranties (whether implied or otherwise), and will not be liable for any losses or damages (whether direct, indirect or consequential) whatsoever, whether in contract, negligence or any other action, arising out of or in connection with the use, or inability to use, the information. It is your responsibility to ensure that our products are used only for the purposes for which they are intended and are used in accordance with any applicable specifications, guidelines, standards, codes of practice, regulations and laws. The supply of our products and services are also subject to certain terms, warranties and exclusions which are available on request.

NOTE:

- 1). FOR MAX PENETRATION SIZE 1200x1200mm
- 2). EXTERNAL CORNERS TO BE FORMED AS SHOWN

OVER FLASHING FROM ROOFLIGHT,
VENT ETC

ARDEX MEMBRANE

ARDEX HD COVER BOARD

FILLET OPTIONAL DEPENDING ON
MEMBRANE

ARDEX POLYISO BOARD

SUBSTRATE

ARDEX VAPOUR BARRIER

SUBSTRATE TO COMPLY WITH
CURRENT ARDEX SUBSTRATE
SPECIFICATION

150 MIN.
IN ACCORDANCE WITH NZBC E2/AS1

INTERNAL LINING

ARDEX WARM ROOFING

ROOF PENETRATION SHEET TITLE

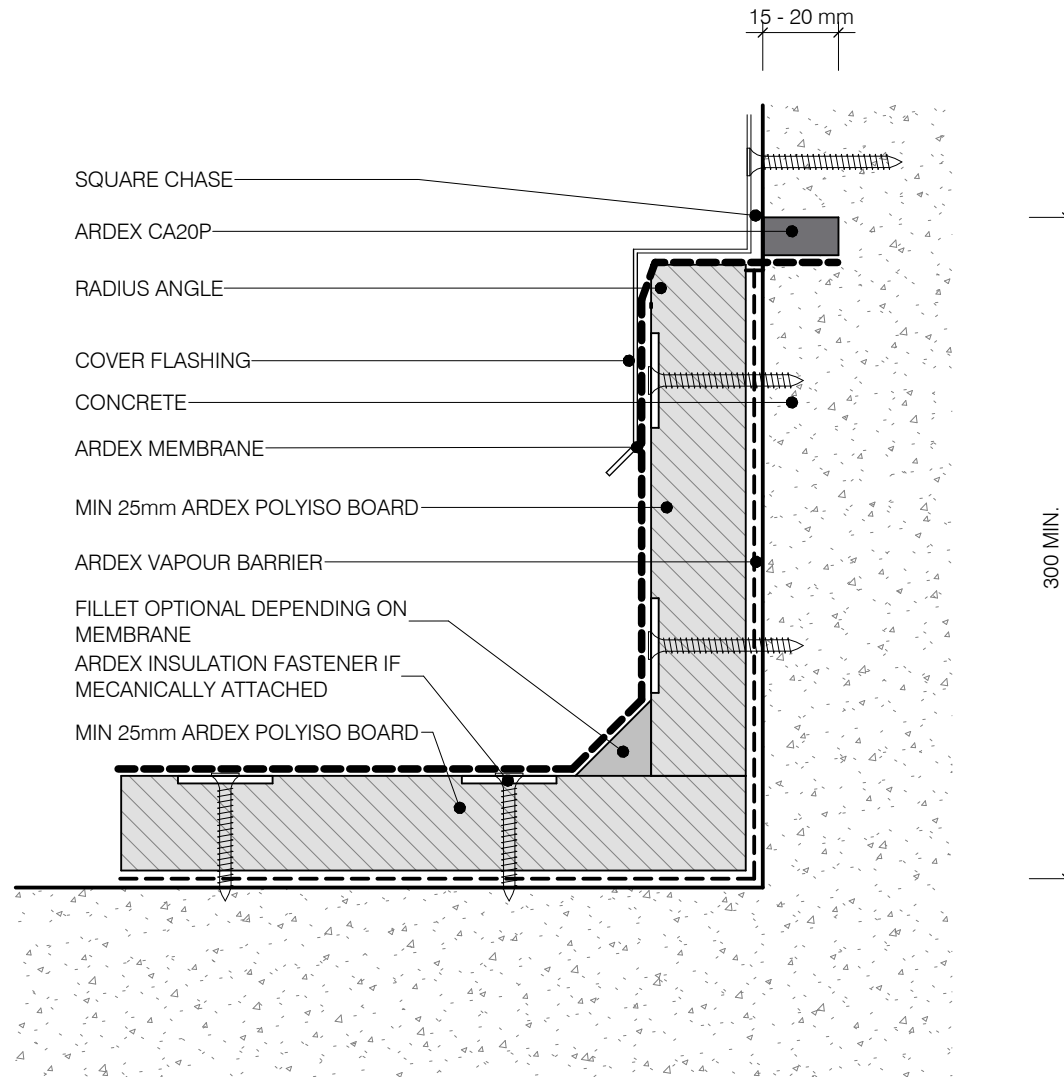
DWG NO. **AWR-12**

DATE 01/07/2022

SCALE 1 : 2 @ A4



Disclaimer: Ardex makes every reasonable effort to ensure that the technical details, recommendations and other information contained in this drawing are accurate and represent our knowledge and experience at the time of design and publication. Ardex reserves the right to change the information without prior notice. Ardex provides the information in good faith with no representations or warranties (whether implied or otherwise), and will not be liable for any losses or damages (whether direct, indirect or consequential) whatsoever, whether in contract, negligence or any other action, arising out of or in connection with the use, or inability to use, the information. It is your responsibility to ensure that our products are used only for the purposes for which they are intended and are used in accordance with any applicable specifications, guidelines, standards, codes of practice, regulations and laws. The supply of our products and services are also subject to certain terms, warranties and exclusions which are available on request.



NOTE:
ARDEX MEMBRANE IS ADHERED INTO SQUARE CHASE AND FINISHED WITH ARDEX CA20P SEALANT

ARDEX WARM ROOFING

Disclaimer: Ardex makes every reasonable effort to ensure that the technical details, recommendations and other information contained in this drawing are accurate and represent our knowledge and experience at the time of design and publication. Ardex reserves the right to change the information without prior notice. Ardex provides the information in good faith with no representations or warranties (whether implied or otherwise), and will not be liable for any losses or damages (whether direct, indirect or consequential) whatsoever, whether in contract, negligence or any other action, arising out of or in connection with the use, or inability to use, the information. It is your responsibility to ensure that our products are used only for the purposes for which they are intended and are used in accordance with any applicable specifications, guidelines, standards, codes of practice, regulations and laws. The supply of our products and services are also subject to certain terms, warranties and exclusions which are available on request.

FLASHING INTO CONCRETE WALLS - CHASE WITH COVER

SHEET TITLE

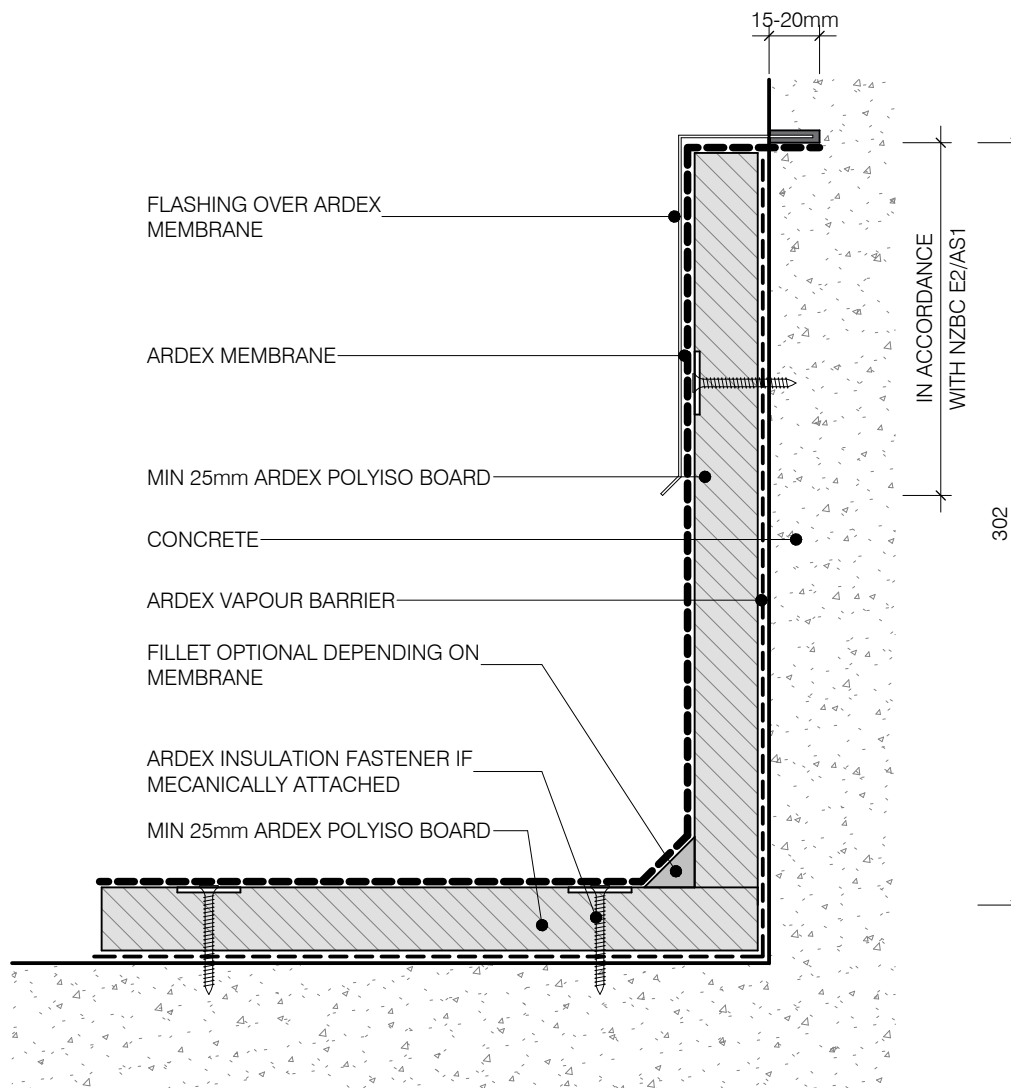
DWG NO. **AWR-13**

DATE 01/07/2022

SCALE 1 : 2 @ A4







NOTE:
ARDEX MEMBRANE IS ADHERED WITH ADHESIVE
UPTO THE CHASE. THE FLASHING IS SEALED INTO
THE CHASE USING ARDEX CA20P OR ARDEX RA88.

ARDEX WARM ROOFING

Disclaimer: Ardex makes every reasonable effort to ensure that the technical details, recommendations and other information contained in this drawing are accurate and represent our knowledge and experience at the time of design and publication. Ardex reserves the right to change the information without prior notice. Ardex provides the information in good faith with no representations or warranties (whether implied or otherwise), and will not be liable for any losses or damages (whether direct, indirect or consequential) whatsoever, whether in contract, negligence or any other action, arising out of or in connection with the use, or inability to use, the information. It is your responsibility to ensure that our products are used only for the purposes for which they are intended and are used in accordance with any applicable specifications, guidelines, standards, codes of practice, regulations and laws. The supply of our products and services are also subject to certain terms, warranties and exclusions which are available on request.

FLASHING INTO CONCRETE WALLS - FLASHING

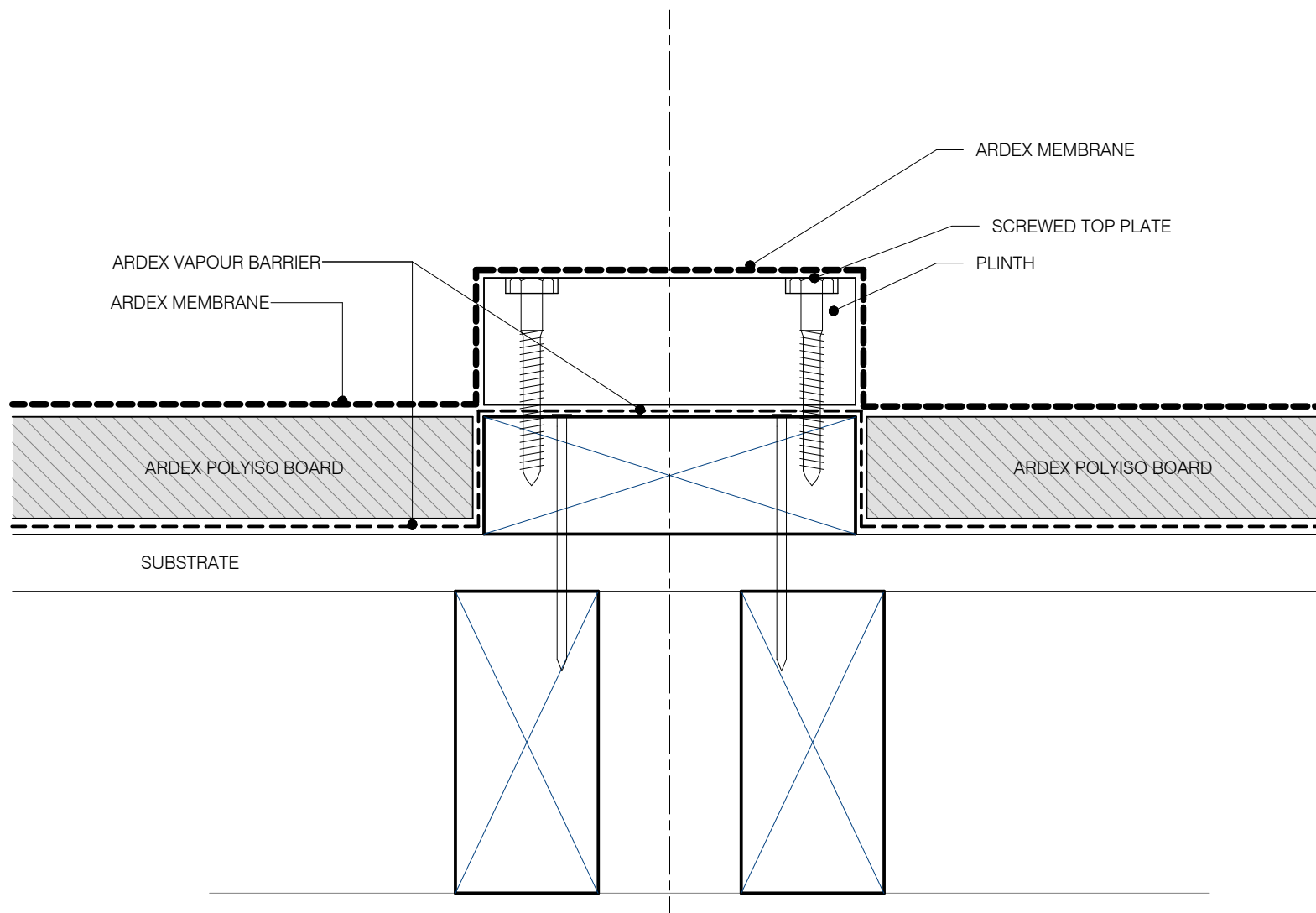
SHEET TITLE

DWG NO. **AWR-15**

DATE 01/07/2022

SCALE 1 : 3 @ A4





ARDEX WARM ROOFING

Disclaimer: Ardex makes every reasonable effort to ensure that the technical details, recommendations and other information contained in this drawing are accurate and represent our knowledge and experience at the time of design and publication. Ardex reserves the right to change the information without prior notice. Ardex provides the information in good faith with no representations or warranties (whether implied or otherwise), and will not be liable for any losses or damages (whether direct, indirect or consequential) whatsoever, whether in contract, negligence or any other action, arising out of or in connection with the use, or inability to use, the information. It is your responsibility to ensure that our products are used only for the purposes for which they are intended and are used in accordance with any applicable specifications, guidelines, standards, codes of practice, regulations and laws. The supply of our products and services are also subject to certain terms, warranties and exclusions which are available on request.

PLANT EQUIPMENT SUPPORTS

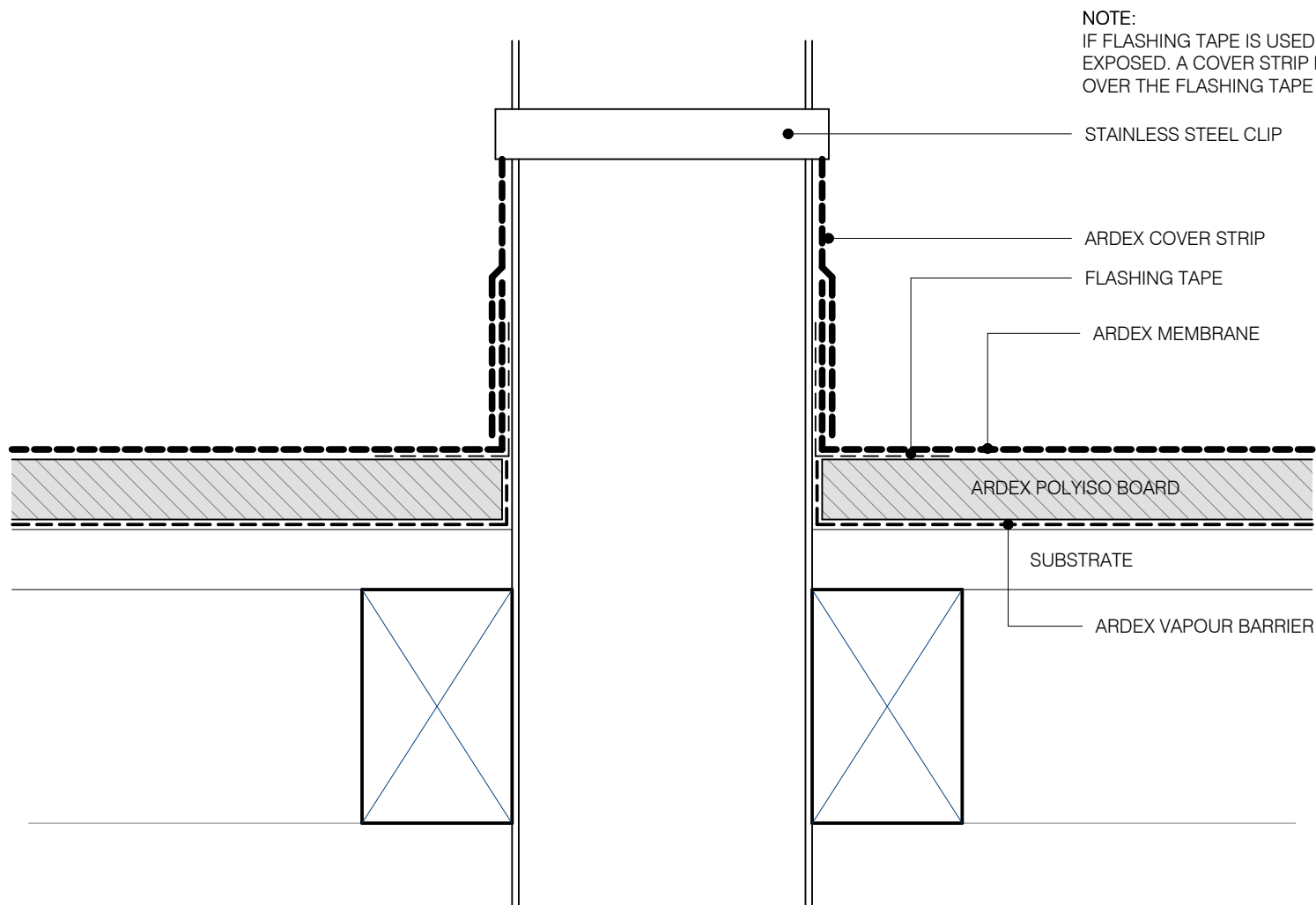
SHEET TITLE

DWG NO. **AWR-16**

DATE 01/07/2022

SCALE 1 : 2 @ A4





ARDEX WARM ROOFING

Disclaimer: Ardex makes every reasonable effort to ensure that the technical details, recommendations and other information contained in this drawing are accurate and represent our knowledge and experience at the time of design and publication. Ardex reserves the right to change the information without prior notice. Ardex provides the information in good faith with no representations or warranties (whether implied or otherwise), and will not be liable for any losses or damages (whether direct, indirect or consequential) whatsoever, whether in contract, negligence or any other action, arising out of or in connection with the use, or inability to use, the information. It is your responsibility to ensure that our products are used only for the purposes for which they are intended and are used in accordance with any applicable specifications, guidelines, standards, codes of practice, regulations and laws. The supply of our products and services are also subject to certain terms, warranties and exclusions which are available on request.

PIPE PENETRATION

SHEET TITLE

DWG NO.

AWR-17

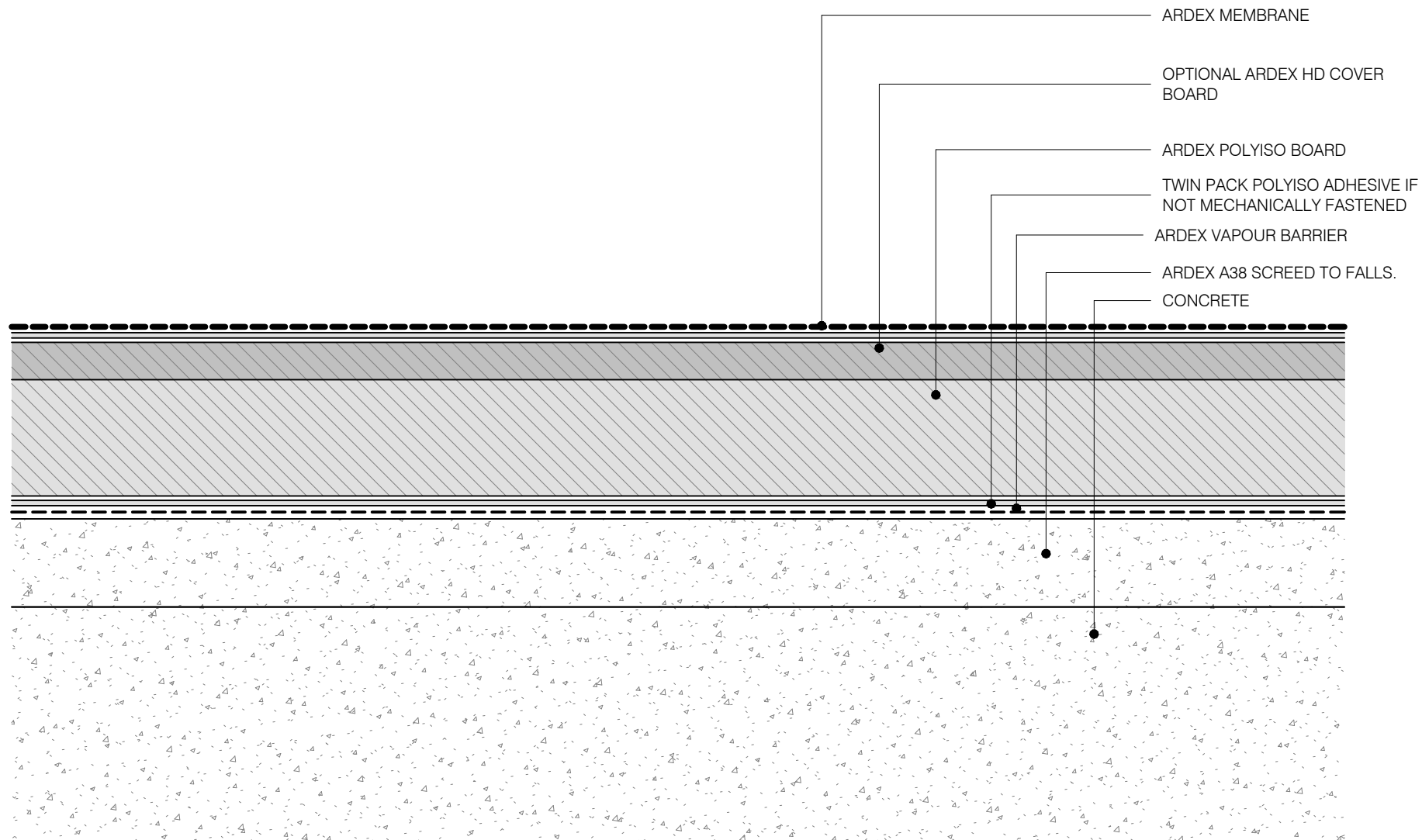
DATE

01/07/2022

SCALE

1 : 2 @ A4





NOTE: FOR FASTENING OR FIXING PATTERN DEPENDENT ON WIND ZONE/R VALUES.
CONSULT WITH AN ARDEX REPRESENTATIVE

ARDEX WARM ROOFING

Disclaimer: Ardex makes every reasonable effort to ensure that the technical details, recommendations and other information contained in this drawing are accurate and represent our knowledge and experience at the time of design and publication. Ardex reserves the right to change the information without prior notice. Ardex provides the information in good faith with no representations or warranties (whether implied or otherwise), and will not be liable for any losses or damages (whether direct, indirect or consequential) whatsoever, whether in contract, negligence or any other action, arising out of or in connection with the use, or inability to use, the information. It is your responsibility to ensure that our products are used only for the purposes for which they are intended and are used in accordance with any applicable specifications, guidelines, standards, codes of practice, regulations and laws. The supply of our products and services are also subject to certain terms, warranties and exclusions which are available on request.

WARM ROOF SYSTEM - CONCRETE

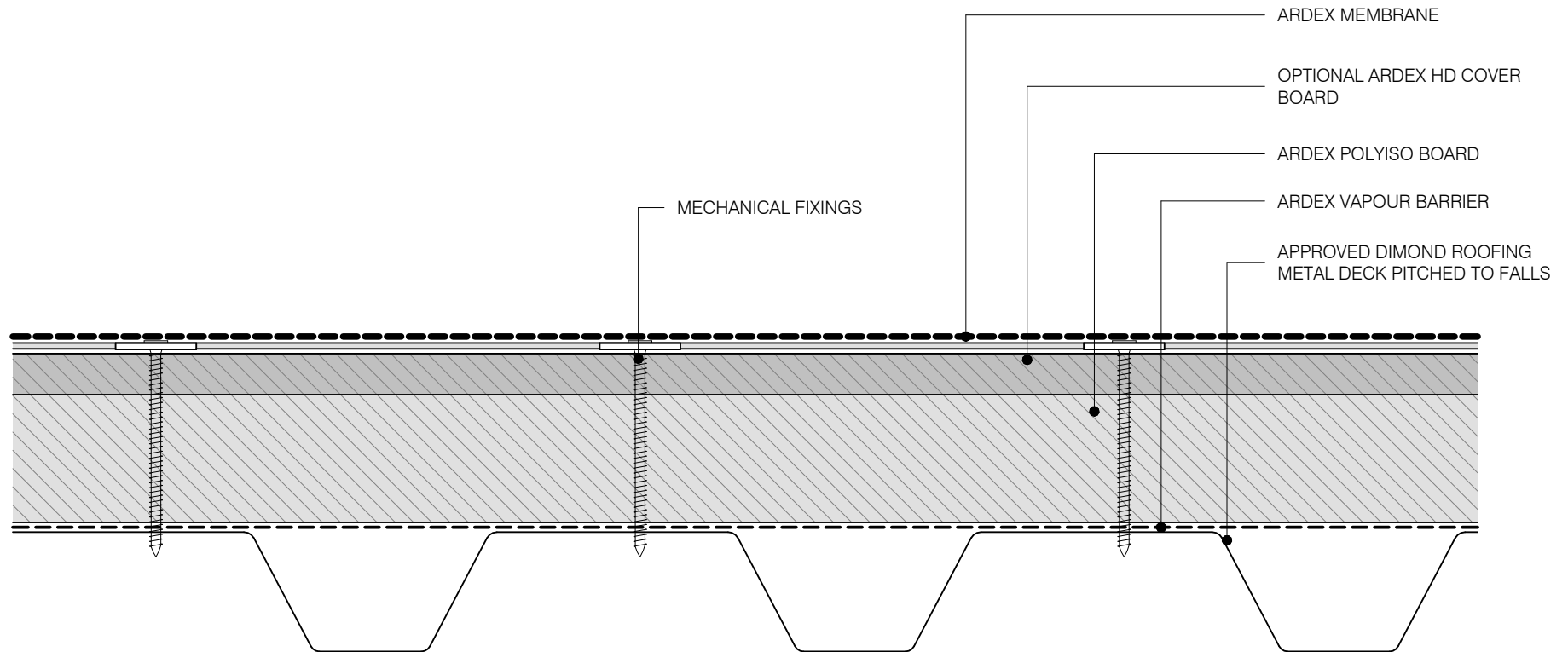
SHEET TITLE

DWG NO. **AWR-18**

DATE 01/07/2022

SCALE 1 : 2 @ A4





NOTE: FOR FASTENING OR FIXING PATTERN DEPENDENT ON WIND ZONE/R VALUES.
CONSULT WITH AN ARDEX REPRESENTATIVE

ARDEX WARM ROOFING

Disclaimer: Ardex makes every reasonable effort to ensure that the technical details, recommendations and other information contained in this drawing are accurate and represent our knowledge and experience at the time of design and publication. Ardex reserves the right to change the information without prior notice. Ardex provides the information in good faith with no representations or warranties (whether implied or otherwise), and will not be liable for any losses or damages (whether direct, indirect or consequential) whatsoever, whether in contract, negligence or any other action, arising out of or in connection with the use, or inability to use, the information. It is your responsibility to ensure that our products are used only for the purposes for which they are intended and are used in accordance with any applicable specifications, guidelines, standards, codes of practice, regulations and laws. The supply of our products and services are also subject to certain terms, warranties and exclusions which are available on request.

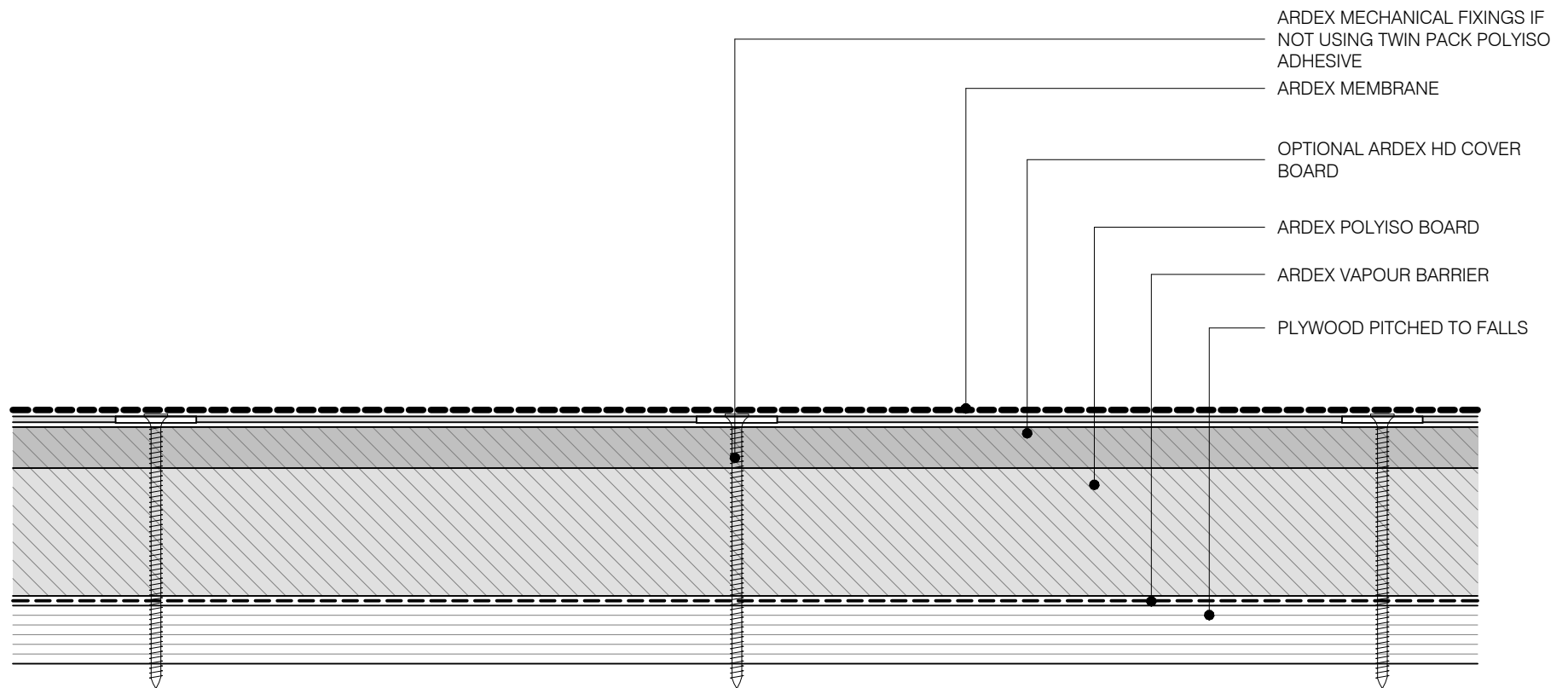
WARM ROOF SYSTEM - METAL DECK
SHEET TITLE

DWG NO. **AWR-19**

DATE 01/07/2022

SCALE 1 : 2 @ A4





NOTE: FOR FASTENING OR FIXING PATTERN DEPENDENT ON WIND ZONE/R VALUES.
CONSULT WITH AN ARDEX REPRESENTATIVE

ARDEX WARM ROOFING

Disclaimer: Ardex makes every reasonable effort to ensure that the technical details, recommendations and other information contained in this drawing are accurate and represent our knowledge and experience at the time of design and publication. Ardex reserves the right to change the information without prior notice. Ardex provides the information in good faith with no representations or warranties (whether implied or otherwise), and will not be liable for any losses or damages (whether direct, indirect or consequential) whatsoever, whether in contract, negligence or any other action, arising out of or in connection with the use, or inability to use, the information. It is your responsibility to ensure that our products are used only for the purposes for which they are intended and are used in accordance with any applicable specifications, guidelines, standards, codes of practice, regulations and laws. The supply of our products and services are also subject to certain terms, warranties and exclusions which are available on request.

WARM ROOF SYSTEM - PLYWOOD

SHEET TITLE

DWG NO.

AWR-20

DATE

01/07/2022

SCALE

1 : 2 @ A4

