

# ARDEX RA 040

## POLYURETHANE BASED JOINT SEALANT



ARDEX RA 040 is a one-component, polyurethane based joint sealant. It has excellent bond strength to most porous and non-porous substrates without the use of a primer. ARDEX RA 040 has excellent temperature & UV resistance and weathering stability.

- Easy to use - one component
- Non-sag - ideal vertical or overhead
- Excellent primerless adhesion
- Suitable for temperatures from -30 - 120°C
- 500% elongation
- +/- 25% movement capability
- Excellent weathering and UV stability
- Can be painted over

#### Location

- Internal or external
- Vertical, horizontal, or overhead

#### Typical uses

- Expansion joints up to 35% movement
- Joint sealing in prefab and tilt-up buildings
- Sealing between window and door frames
- Sealing moving cracks

#### Coverage

- 24m per unit at consistent 6mm Ø bead

#### Cure time

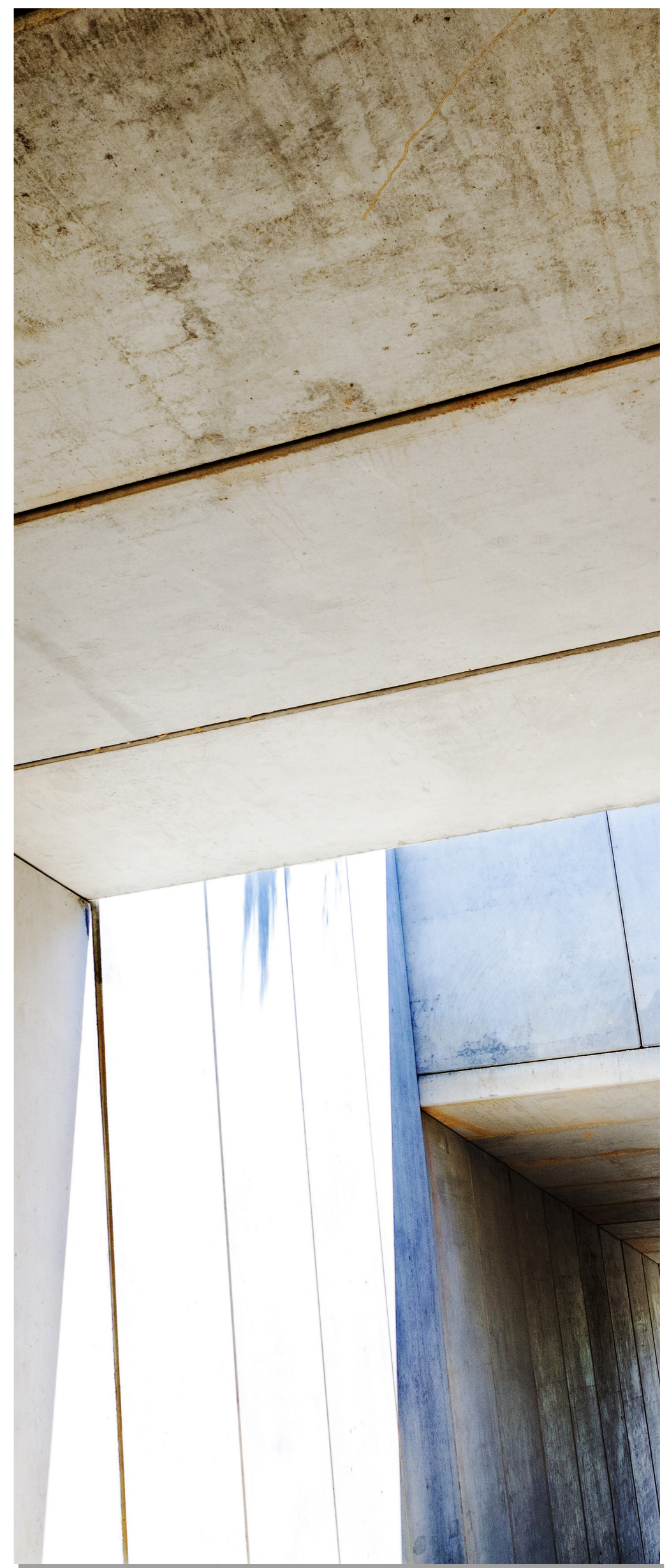
- Skin time: 1 hour
- Cure time: 24 hours

#### Packaging

600mL sausage

#### Code

24541



To find out more call 0800 227 339  
or visit [www.ardex.co.nz](http://www.ardex.co.nz)

