

ARDEX WA 100

TWO PART EPOXY ADHESIVE FOR NATURAL STONE & OTHER CHALLENGING INSTALLS



ARDEX WA100 is a high strength, creamy white, two part epoxy stone adhesive that exhibits superior bond strength. It is specially designed for the fixing of natural stone such as marble and granite, including those sensitive to moisture. It can also be used for the fixing and bedding of natural stone on walls and floors, bench tops and stair risers.

- Capable of withstanding vibrating movements
- Strong, permanent bond
- Non-slump capability
- Easy to use with 1:1 mixing ratio by volume
- Smooth, easy to blend consistency
- Non Slump capability
- Ideal for natural stones - will not stain or bleed through

Location

- Internal or external

Tile Types

- All types of natural stone, plus fully vitrified, ceramic and porcelain tiles.

Surfaces

- Floor, Walls

Colour

- Creamy white

Substrates

- Concrete
- Renders
- Screeds
- Medium density fibre-cement sheet
- Plasterboard
- Existing ceramic and stone tiles
- Autoclaved aerated concrete (AAC)
- Brick and blockwork

Coverage

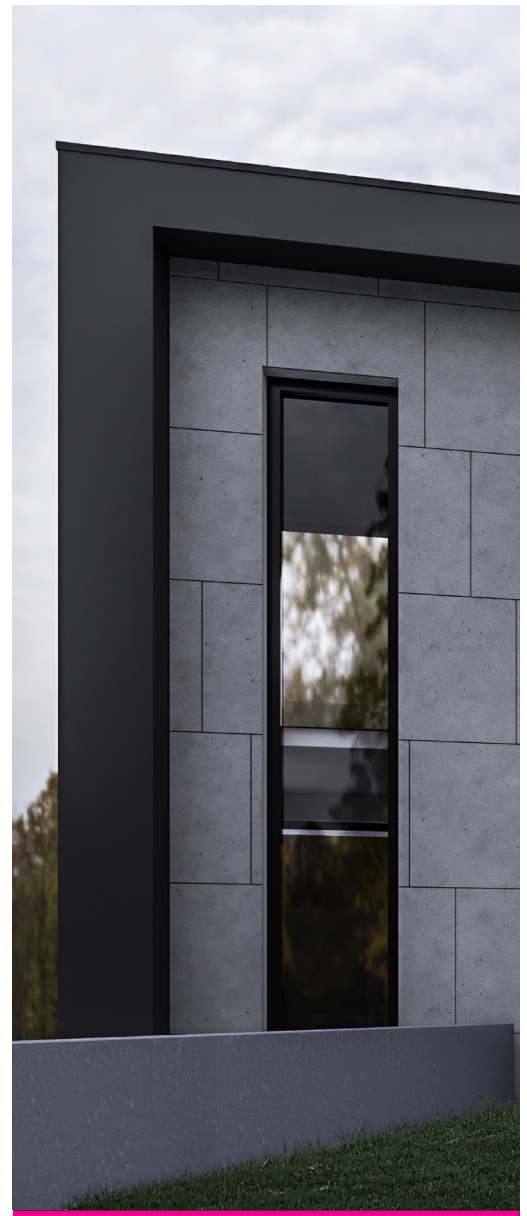
- 20L unit covers approximately 15m² at 1mm bed thickness

Packaging

20L Kit (2 x 10L Liquid)

Code

8001780



To find out more call 0800 227 339
or visit www.ardex.co.nz

